



SOUTHEAST ALASKA POWER AGENCY

Regular Board Meeting AGENDA

Ted Ferry Civic Center | Ketchikan, Alaska

April 28, 2016 | 9:00 a.m. to 5:00 p.m. AKDT

For Telephonic Participation: Dial 1-800-315-6338 (Access Code: 73272#)

1. Call to Order
 - A. Roll Call
 - B. Communications/Lay on the Table Items
 - C. Disclosure of Conflicts of Interest
2. Approval of the Agenda
3. Persons to be Heard
4. Review and Approve Minutes
 - A. February 11-12, 2016 Minutes of Regular Board Meeting
 - B. March 15, 2016 Minutes of Special Board Meeting
 - C. April 11, 2016 Minutes of Special Board Meeting
 - D. April 15, 2016 Minutes of Special Board Meeting
5. Financial Reports
 - A. CEO Financial Cover Memo
 - B. Controller's Report
 - C. kWh Graph
 - D. Grant Summary
 - E. Financial Statements – February 2016
 - F. Financial Statements – January 2016
 - G. R&R Reports
 - H. Disbursement Approvals – February and March 2016
6. CEO Report
7. Staff Reports
 - A. Operations Manager Report (*Henson*)
 - (i) Tyee Lake Report
 - (ii) Swan Lake Report [to be provided as handout at meeting]
 - B. Director of Special Projects Report (*Wolfe*)
 - C. Power Systems Specialist Report (*Schofield*)

8. New Business
 - A. Consideration and Approval of Resolution No. 2016-064 re:
SEAPA's Capitalization Policy
 - B. Consideration and Approval of Budget Increase and Sole Source
Contract to Chatham Electric, Inc.
 - C. Consideration and Approval of Contract Award for Tye Lake
Housing Roof and Siding Installation Project
 - D. Consideration and Approval of Swan Lake Reservoir
Expansion Project/Flashboard System Modification
 - E. Consideration and Approval of Load Bank Lease for Swan Lake
Reservoir Expansion Project
 - F. Next Meeting Dates
9. Director Comments
10. Adjourn



SOUTHEAST ALASKA POWER AGENCY

Minutes of Regular Meeting

February 11-12, 2016

The Nolan Center
Wrangell, Alaska

(An audio recording of this meeting is available on SEAPA's website at www.seapahydro.org)

1) Call to Order

A. *Roll Call.* Chairman Jensen called the meeting to order at 1:00 p.m. AKST on February 11, 2016. The following directors and alternates were present, thus establishing a quorum of the board:

Director	Alternate	Representing	
	Andy Donato	Swan Lake	Ketchikan
		Swan Lake	Ketchikan
Joe Nelson	Mark Jensen	Tyee Lake	Petersburg
John Jensen	Cindi Lagoudakis	Tyee Lake	Petersburg
Stephen Prysunka	Clay Hammer	Tyee Lake	Wrangell

The following SEAPA staff/counsel were present for all or part of the meeting:

Trey Acteson, Chief Executive Officer	Eric Wolfe, Director of Special Projects
Sharon Thompson, Executive Assistant	Steve Henson, Operations Manager
Joel Paisner, Ascent Law Partners, LLC	Kay Key, Controller

B. *Communications/Lay on the Table* – None.

C. *Disclosure of Conflicts of Interest* – None.

2) Approval of the Agenda

➤ Motion	M/S (Nelson/Donato) to approve the agenda as presented. Motion approved unanimously by polled vote.	Action 16-480
-----------------	---	--------------------------

3) Introduction of Board Members – Introductions of board members and staff were exchanged for the benefit of new board members.

4) Election of Officers

➤ Motion	M/S (Prysunka/Nelson) to nominate John Jensen as Chairman. Motion approved unanimously by polled vote.	Action 16-481
-----------------	--	--------------------------

➤ Motion	M/S (Nelson/Jensen) to nominate Clay Hammer as Vice Chairman. Motion approved unanimously by polled vote.	Action 16-482
-----------------	---	--------------------------

➤ Motion	M/S (Jensen/Donato) to nominate Judy Zenge as Secretary-Treasurer. Motion approved unanimously by polled vote.	Action 16-483
-----------------	--	--------------------------

5) **Persons to be Heard** – None.

6) **Introduction to SEAPA (Joel Paisner)** – Mr. Paisner presented a PowerPoint slideshow for the benefit of new board members, which provided Agency orientation.

7) **Review and Approve Minutes**

➤ Motion	M/S (Donato/Prysunka) to approve the Minutes of the Regular Meeting of December 10, 2015. Motion approved unanimously by polled vote.	Action 16-484
-----------------	---	--------------------------

8) **CEO Report**

Mr. Acteson provided an update on SEAPA's Swan Lake Reservoir Expansion Project advising that contracts were conformed for the flashboards and gate and that a special meeting would be called for award of a construction contract. Discussion followed on balancing Swan Lake levels during the construction period.

Mr. Acteson provided updates on various legislative matters and advised that he would be traveling to the Alaska Power Association's annual fly-in and meeting with key legislators to focus on the preservation of current rural energy programs and industry needs. He advised that SEAPA will provide comments to the U.S. Forest Service on their Proposed Amended Land and Resource Management Plan and Draft Environmental Impact Statement for the Tongass National Forest during a 90-day public review period. He reported that a multi-year Memorandum of Understanding with SSRAA had been completed for SSRAA's Chinook salmon rearing pens located next to SEAPA's Swan Lake Plant, and that SEAPA is waiting on final approvals for an agreement with the U.S. Forest Service for SEAPA's commitment of time and resources to maintain four public use cabins. Mr. Acteson advised that the engineering intern that worked for SEAPA during the summer of 2015 would be re-engaged for the 2016 season following completion of the employee classification changes and that recruitment would begin for a temporary assistant for the Wrangell office.

9) **Staff Reports**

A. Operations Manager Report (Steve Henson). Mr. Henson provided a summary of several projects including the Tyee Lake Satellite Communications System, Wrangell Switchyard Circuit Switcher, CT's and Relay for the Wrangell Switchyard Circuit Switcher, Swan-Tyee Helipads, Marine Terminal Gage Replacement and Communications Upgrade, Guy Wire Thimble Replacements on the Swan-Tyee Intertie, Damper Replacements on the Tyee Line, and explained that new roofs and siding would be necessary on the crew housing at Tyee. Mr. Henson also provided updates on activities at Swan Lake and Tyee Lake.

No formal action was taken for Agenda Item 9C (Power System Specialist Report) to be heard before Agenda Item 9B (Director of Special Projects Report). The agenda items were renumbered accordingly.

B. Power System Specialist Report (Schofield). Mr. Acteson reported on behalf of Mr. Schofield, who was not present at the meeting. He provided an update on a small leak that had been discovered at the Swan Lake Powerhouse roof. He explained that the Basler exciter equipment had been received and that final engineering design work and a request for proposals were being developed for installation of the equipment. Mr. Acteson outlined the status of license conditions required under

FERC's amendment to Swan Lake's license for implementation of the Swan Lake Reservoir Expansion Project. He advised an Emergency Action Plan Table Top Exercise would take place at SEAPA's offices on March 29 and that the Bureau of Reclamation would conduct a power review of operations and maintenance at the Tyee Plant the week of March 7th.

The meeting recessed at 3:51 p.m. and reconvened at 4:00 p.m.

C. Director of Special Projects (Wolfe). Mr. Wolfe explained the importance of appraising the future load demands of SEAPA's municipal members and the long-term benefits of an appraisal. He presented slides showing total load and distribution losses and transmission and SEAPA plant consumption, past loads, an estimate of future needs, and identified the key factors driving load. He provided an update of the Alarm-Controls-Protection Project at Tyee and explained the benefits of the upgrade. He reviewed the purpose of the Swan Lake Reservoir Expansion Project noting there would be minimal environmental impact, presented a drawing showing what the spillway will look like after completion, and provided a brief synopsis of recent activities highlighting the ongoing permitting efforts, contract activity, and explained the connection between the project's construction schedule and next year's water management since the spillway will be modified. Mr. Wolfe closed his report with a water management update with graphs showing that both of the Swan and Tyee reservoirs are significantly above target draft levels but will have to start drafting Swan Lake soon because of the upcoming construction project.

The meeting recessed at 5:07 p.m. on February 11, 2016 and reconvened at 9:00 a.m. on February 12, 2016.

A roll call was taken. The same directors and alternates present during the February 11, 2016 portion of the meeting were present for the February 12, 2016 portion of the meeting, thus establishing a quorum of the board.

10) Financial Reports

(A)-(H) Mr. Acteson reported that SEAPA's financial position remains solid and reviewed current revenue and expenses, grant activities, and renewal and replacement projects.

➤ Motion	M/S (Donato/Prysunka) to approve the financial statements for the months of November and December 2015. Motion approved unanimously by polled vote.	Action 16-485
-----------------	---	------------------

Following the discussion on finances, considerable discussion exchanged between staff and the directors on the status of several items, including siting of the meteorological tower SEAPA received from the Alaska Energy Authority, purchase of a lathe, helipads, SCADA tasks, community service projects, purchase of a used vehicle, refurbishment of the old Wrangell reactor, and various other expenditures.

➤ Motion	M/S (Donato/Prysunka) to approve disbursements for the months of December 2015 and January 2016 in the amount of \$3,493,667.30. Motion approved unanimously by polled vote.	Action 16-486
-----------------	--	------------------

11) Old Business

A. *Operations Plan (Action #2 Tabled at 12/10/2015 Meeting)* – Mr. Acteson explained the second option of SEAPA's 2016 Operations Plan and advised that staff would initiate drafting of an agreement to address any concerns related to exercising the option.

The meeting recessed at 10:26 a.m. and reconvened at 10:50 a.m.

12) **New Business**

A. *Consideration and Approval of Project Management Contract for STI Helipad Project.*

➤ Motion	M/S (Prysunka/Nelson) to authorize staff to enter into an amendment to Tongass Engineering, LLC's Task Order No. 13-01 to increase the not-to-exceed value of the contract from \$157,265 to \$257,015 for an increase of \$99,750 for Project Management Services for the completion of SEAPA's Swan-Tyee Intertie Helipad Project. Motion approved unanimously by polled vote.	Action 16-487
-----------------	--	------------------

B. *Consideration and Approval of Swan Lake Construction Engineering Services.*

➤ Motion	M/S (Prysunka/Nelson) to authorize staff to enter into a sole source contract with McMillen LLC for construction engineering for the Swan Lake Reservoir Expansion Project for the not-to-exceed value of \$367,000. Motion approved unanimously by polled vote.	Action 16-488
-----------------	--	------------------

C. *Consideration and Approval of Resolution #2016-063 (Amendment to SEAPA's Deferred Compensation Plan).*

➤ Motion	M/S (Donato/Nelson) to adopt Resolution No. 2016-063 approving and authorizing the Second Amendment to SEAPA's Deferred Compensation Plan and to adopt the Revised Employee Classifications contained in the February 1, 2016 Memo titled 'Employee Benefit Eligibility' provided in the February 11-12, 2016 SEAPA board packet. It was further moved to authorize staff to effect the amendment of SEAPA's group health and welfare plans to add temporary employees as an excluded class effective March 1, 2016. Motion approved unanimously by polled vote.	Action 16-489
-----------------	--	------------------

D. *Consideration and Approval of Wrangell/SEAPA Substation Upgrade.*

➤ Motion	M/S (Prysunka/Nelson) to increase SEAPA's FY2016 budget by \$93,309.50 for SEAPA's 50% share of the cost of an upgrade to the connection to the Wrangell/SEAPA substation. Motion approved unanimously by polled vote.	Action 16-490
-----------------	--	------------------

E. *Board Meeting Dates* – The board had no objections to the following dates for regular meetings of the directors for the remainder of calendar year 2016:

- April 28, 2016 (Ketchikan)
- June 8-9, 2016 (Petersburg)
- August 25, 2016 (Ketchikan)
- October 12-13, 2016 (Wrangell)
- December 14, 2016 (Ketchikan)

13) **Director Comments** – Directors provided brief comments.

14) Adjourn

Chairman Jensen adjourned the meeting on February 12, 2016 at 11:27 a.m. AKST.

Signed:

Attest:

Secretary/Treasurer

Chairman

Unapproved Draft



SOUTHEAST ALASKA POWER AGENCY

Minutes of Special Meeting

March 15, 2016

Southeast Alaska Power Agency Offices
via Teleconference | Ketchikan, Alaska

(An audio recording of this meeting is available on SEAPA's website at www.seapahydro.org)

1) Call to Order

A. *Roll Call.* Chairman Jensen called the meeting to order at 10:00 a.m. AKDT on March 15, 2016. The following directors and alternates were present, thus establishing a quorum of the board:

Director	Present Telephonic (T) In Person (IP)	Alternate	Present Telephonic (T) In Person (IP)	Representing
Lew Williams*	T	Andy Donato	IP	Swan Lake
		Charles Freeman	IP	Swan Lake
Joe Nelson	T			Tyee Lake
John Jensen	T			Tyee Lake
		Clay Hammer	T	Tyee Lake
				Petersburg
				Wrangell

*Mr. Williams joined the meeting telephonically at 10:07 a.m.

The following SEAPA staff and counsel were present for all or part of the meeting:

Staff	Present Telephonic (T) In Person (IP)	Staff/Counsel	Present Telephonic (T) In Person (IP)
Trey Acteson, CEO	T	Eric Wolfe, P.E., DSP	T
Kay Key, Controller	IP	Ed Schofield, PSS	IP
Sharon Thompson, Exec. Asst.	IP		

2) Approval of the Agenda

➤ Motion	M/S (Freeman/Nelson) to approve the agenda as presented. Motion approved unanimously by polled vote.	Action 16-491
-----------------	---	--------------------------

3) New Business

A. *Contract Award re Swan Lake Reservoir Expansion Construction Project*

➤ Motion	M/S (Freeman/Hammer) to authorize staff to enter into a Contract with IMCO General Construction, Inc. for SEAPA's Swan Lake Reservoir Expansion Construction Project for the value of \$4,338,889, plus \$241,500 for scope additions and a project delivery bonus, and a 10% contingency of \$433,889, for the total not-to-exceed value of \$5,014,278. Motion approved unanimously by polled vote.	Action 16-461
-----------------	---	--------------------------

B. Additional Funding for SEAPA's Swan-Tyee Intertie Helipad Project

➤ Motion	M/S (Hammer/Freeman) to increase SEAPA's FY2016 budget by \$937,395 for completion of the Swan-Tyee Intertie Helicopter Pad Project in Fiscal Year 2016. This includes an increase of \$53,165 to the overall budget for the project. Motion approved unanimously by polled vote.	Action 16-462
-----------------	---	--------------------------

The meeting recessed at 10:16 a.m. for the executive session, and reconvened at 10:54 a.m. Ms. Zenge announced that the Board met in executive session and that no action would be taken following the executive session.

4. Adjourn

Chairman Jensen adjourned the meeting at 10:27 a.m. AKDT.

Signed:

Attest:

Secretary/Treasurer

Chairman



SOUTHEAST ALASKA POWER AGENCY

Minutes of Special Meeting

April 11, 2016

Southeast Alaska Power Agency Offices
via Teleconference | Ketchikan, Alaska

(An audio recording of this meeting is available on SEAPA's website at www.seapahydro.org)

1) Call to Order

A. *Roll Call.* Chairman Jensen called the meeting to order at 10:01 a.m. AKDT on April 11, 2016. The following directors and alternates were present, either telephonically or in person, thus establishing a quorum of the board:

Director	Present <i>Telephonic (T)</i> <i>In Person (IP)</i>	Alternate	Present <i>Telephonic (T)</i> <i>In Person (IP)</i>	Representing	
Lew Williams	T	Andy Donato*	IP	Swan Lake	Ketchikan
Judy Zenge	T	Charles Freeman	IP	Swan Lake	Ketchikan
Joe Nelson	T	Mark Jensen	T	Tyee Lake	Petersburg
John Jensen	T	Cindi Lagoudakis*	T	Tyee Lake	Petersburg
Stephen Prysunka	T	Clay Hammer	T	Tyee Lake	Wrangell

*Mr. Donato joined the meeting in person at 10:06 a.m. and Ms. Lagoudakis joined telephonically at 11:33 a.m.

The following SEAPA staff and counsel were present for all or part of the meeting:

Staff	Present <i>Telephonic (T)</i> <i>In Person (IP)</i>	Staff/Counsel	Present <i>Telephonic (T)</i> <i>In Person (IP)</i>
Trey Acteson, CEO	IP	Eric Wolfe, DSP	IP
Sharon Thompson, Exec. Assist.	IP	Joel Paisner, Counsel	T
Lisa Maddocks, Admin. Assist.	IP		

Following the roll call, Chairman Jensen announced that Mr. Dave Galla, Mr. Gregg Scheff, and Mr. Thomas Siekawitch, Wrangell residents, who had perished in an airplane accident on April 8, 2016 on Admiralty Island, would be greatly missed and would not be forgotten. He requested that a moment of silence be observed to show respect for the loss. Following the moment of silence, Mr. Acteson expressed SEAPA's deepest condolences for the loss and hope for a successful recovery for Ms. Morgan Enright who was injured in the accident.

2) Approval of the Agenda

➤ Motion	M/S (Nelson/Freeman) to approve the Agenda as presented. Motion approved unanimously by polled vote.	Action 16-463
-----------------	--	--------------------------

3) New Business

A. Executive Session

➤ Motion	A motion was made by Mr. Freeman, adopted by Ms. Zenge, and seconded by Mr. Nelson, to recess into Executive Session to conduct discussions relating to contract negotiations. The Executive Session will be conducted pursuant to SEAPA's Bylaws which are consistent with Alaska Statute 44.62.310 as the discussions relate to matters the immediate knowledge of which would clearly have an adverse effect upon the finances of the Agency, the Projects, or any of the Member Utilities represented on the Board. Motion approved unanimously by polled vote.	Action 16-464
-----------------	---	------------------

The meeting recessed at 10:06 a.m. for an executive session and resumed at 11:33 a.m. for the regular session.

Chairman Jensen requested a roll call to establish that all directors participating telephonically had rejoined the regular session of the meeting. All but Mr. Williams had rejoined the meeting. Chairman Jensen requested a motion following the discussion that took place in the executive session. Mr. Donato, as Mr. Williams' alternate, made the following motion¹:

➤ Motion	M/S (Donato/Zenge) that in the matter of the Swan Lake Reservoir Expansion Construction Project ("Project"), it is acknowledged that after issuing a notice of award to IMCO General Construction, Inc. it has refused to complete contract conformance with SEAPA. In accordance with Section 7.3 of SEAPA's Procurement Policy ("Policy"), the Board directs staff to pursue negotiations with Pacific Pile & Marine L.P., the second lowest bidder. The motion passed four to one with Mr. Jensen, Ms. Zenge, Mr. Williams, and Mr. Prysunka voting yes, and Mr. Nelson voting no.	Action 16-465
-----------------	---	------------------

4. Adjourn

Mr. Williams moved to adjourn the meeting, with a second by Ms. Zenge. There were no objections to the motion. The meeting adjourned at 11:37 a.m. AKDT.

Signed:

Attest:

Secretary/Treasurer

Chairman

¹ Following Mr. Donato's reading of the motion and a second by Ms. Zenge, Mr. Williams rejoined the meeting telephonically prior to a vote on the motion.



SOUTHEAST ALASKA POWER AGENCY

Minutes of Special Meeting

April 15, 2016

Southeast Alaska Power Agency Offices
via Teleconference | Ketchikan, Alaska

(An audio recording of this meeting is available on SEAPA's website at www.seapahydro.org)

1) Call to Order

A. *Roll Call.* Chairman Jensen called the meeting to order at 2:00 p.m. AKDT on April 15, 2016. The following directors and alternates were present, either telephonically or in person, thus establishing a quorum of the board:

Director	Present <i>Telephonic (T)</i> <i>In Person (IP)</i>	Alternate	Present <i>Telephonic (T)</i> <i>In Person (IP)</i>	Representing	
Judy Zenge	T	Andy Donato	IP	Swan Lake	Ketchikan
Joe Nelson	T	Mark Jensen	T	Swan Lake	Ketchikan
John Jensen	T	Cindi Lagoudakis	T	Tyee Lake	Petersburg
Stephen Prysunka	T	Clay Hammer	T	Tyee Lake	Petersburg
				Tyee Lake	Wrangell

The following SEAPA staff and counsel were present for all or part of the meeting:

Staff	Present <i>Telephonic (T)</i> <i>In Person (IP)</i>	Staff/Counsel	Present <i>Telephonic (T)</i> <i>In Person (IP)</i>
Trey Acteson, CEO	T	Eric Wolfe, DSP	IP
Sharon Thompson, Exec. Assist.	IP	Joel Paisner, Counsel	T

2) Approval of the Agenda

➤ Motion	M/S (Donato/Nelson) to approve the Agenda as presented. There were no objections to the motion.	Action 16-466
-----------------	---	--------------------------

3) New Business

A. *Executive Session*

➤ Motion	M/S (Prysunka/Donato) to recess into Executive Session to conduct discussions relating to contract negotiations. The Executive Session will be conducted pursuant to SEAPA's Bylaws which are consistent with Alaska Statute 44.62.310 as the discussions relate to matters the immediate knowledge of	Action 16-467
-----------------	--	--------------------------

which would clearly have an adverse effect upon the finances of the Agency, the Projects, or any of the Member Utilities represented on the Board. Motion approved unanimously by polled vote.

The meeting recessed at 2:04 p.m. for the executive session and resumed at 2:40 p.m. for the regular session.

Chairman Jensen requested a roll call to establish that all directors participating telephonically had rejoined the regular session of the meeting. Following the roll call, he requested a motion following the discussion that took place in the executive session.

➤ **Motion**

M/S (Donato/Prysunka) to authorize staff to enter into a contract with Pacific Pile & Marine, L.P., the second lowest bidder, for SEAPA's Swan Lake Reservoir Expansion Construction Project for the value of \$6,248,250 and further authorize an 8% contingency of \$499,860, for the total not-to-exceed value of \$6,748,110. Motion approved unanimously by polled vote.

Action
16-468

4. Adjourn

Chairman Jensen adjourned the meeting at 2:45 p.m. AKDT.

Signed:

Attest:

Secretary/Treasurer

Chairman



Southeast Alaska Power Agency CEO Financial Cover Letter

DATE: April 20, 2016
TO: SEAPA Board of Directors
FROM: Trey Acteson, CEO

SEAPA's financial position is stable, with no major unforeseen events occurring year-to-date. The financial statements in your Board packets include January and February 2016.

REVENUE & EXPENSES:

Total power purchase revenues through March are \$8,857,557 actual vs. \$9,499,600 budget. Factoring in known displaced sales of \$338,152 from Whitman operation, revenues through March are under budget by \$303,891. Lower revenues are likely due to the warm, wet weather cycle we have been experiencing.

Total administrative and operating expenses through February are \$3,676,328 actual vs. \$4,419,993 budget, under budget by \$743,665. One contributing factor is our high system reliability. Failures year-to-date have been minimal, so budgeted contingencies for unforeseen events have not been expended. Recently completed work has also not shown up on the financials yet. Additionally, some budgeted expense work may occur later in the year than expected. Although we attempt to accurately forecast the months in which work will actually occur, there are many variables that influence timing (e.g. long lead-time parts, permitting, engineering, contractor availability, weather, tides, camp capacity, outage coordination, etc.).

GRANTS:

Swan Lake Expansion Project grant dollars are flowing and will be expended in the early stages of construction. At the end of February we had an unspent balance of \$2,575,622.

Kake-Petersburg Intertie Project expenditures have been very minimal as we await publishing of the Final Environmental Impact Study (EIS) and Draft Record of Decision (ROD). We will issue a design engineering RFP following the ROD.

RENEWAL & REPLACEMENT PROJECTS:

I am very pleased with the progress on our significant list of R&R projects. Many of these projects require extensive pre-planning, design engineering and acquisition of parts. As reflected on the R&R summary sheet, virtually every project is aligned for substantial completion. FY16 R&R expenditures were \$4,223,088 through the end of February (including SWL Reservoir Expansion).



SOUTHEAST ALASKA POWER AGENCY

Controller's Report
Kay Key

FEBRUARY and JANUARY, 2016

Date: April 7, 2016
To: Trey Acteson, CEO
From: Kay Key
Subject: Financial Statements for the April 28, 2016 Board Meeting

SUGGESTED MOTION

I move to approve financial statements for the months of February and January, 2016.

The following FY2016 financial reports are included in this board packet:

- **kWh Graph** (through March, 2016)
- **Grant Summary** (through February, 2016)
- **Monthly Financial Statements for February and January, 2016:**
 - ✓ Financial Overview
 - ✓ Fund Allocation Graph
 - ✓ Statement of Financial Position – Summary
 - ✓ Statement of Activities – Summary
 - ✓ Statement of Financial Position – Detail
 - ✓ Statement of Activities – Budget Comparison
- **R&R Projects: Summary, Detail and Closed Projects**

A project summary for RR271 Substation Upgrade Wrangell is included with the R&R reports. As presented at the February board meeting, during which the Board approved the project and associated budget increase, this project's costs will be shared with the municipality of Wrangell. SEAPA's cost share will be \$93,310, of which \$45,025 will be capitalized and \$48,285 will be expensed. Details are included in the project summary.

SUGGESTED MOTION

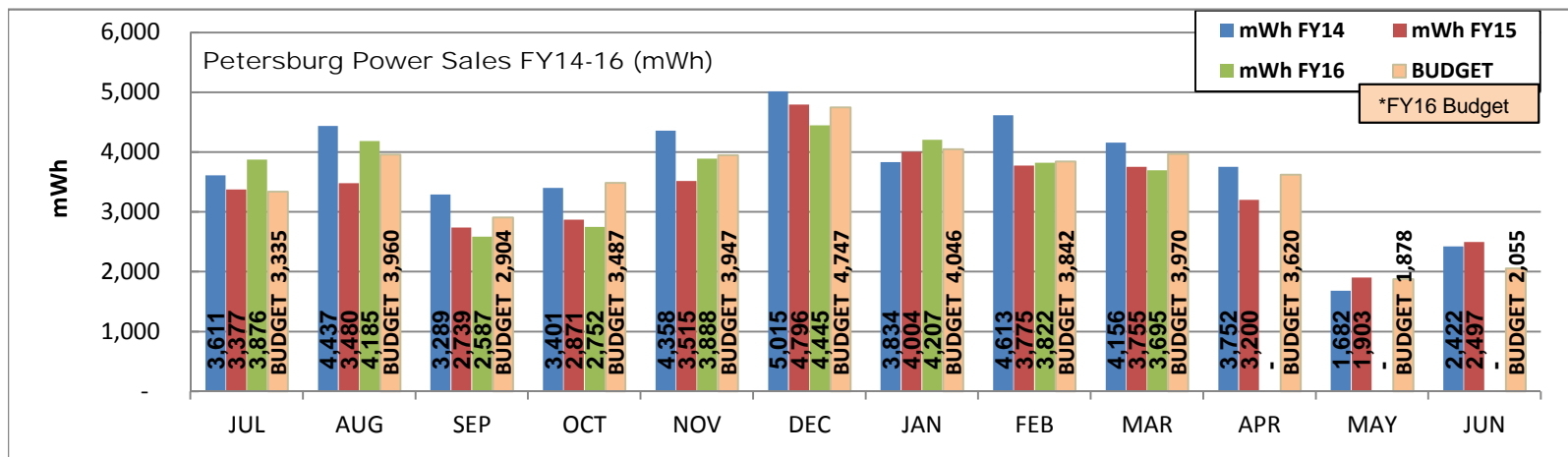
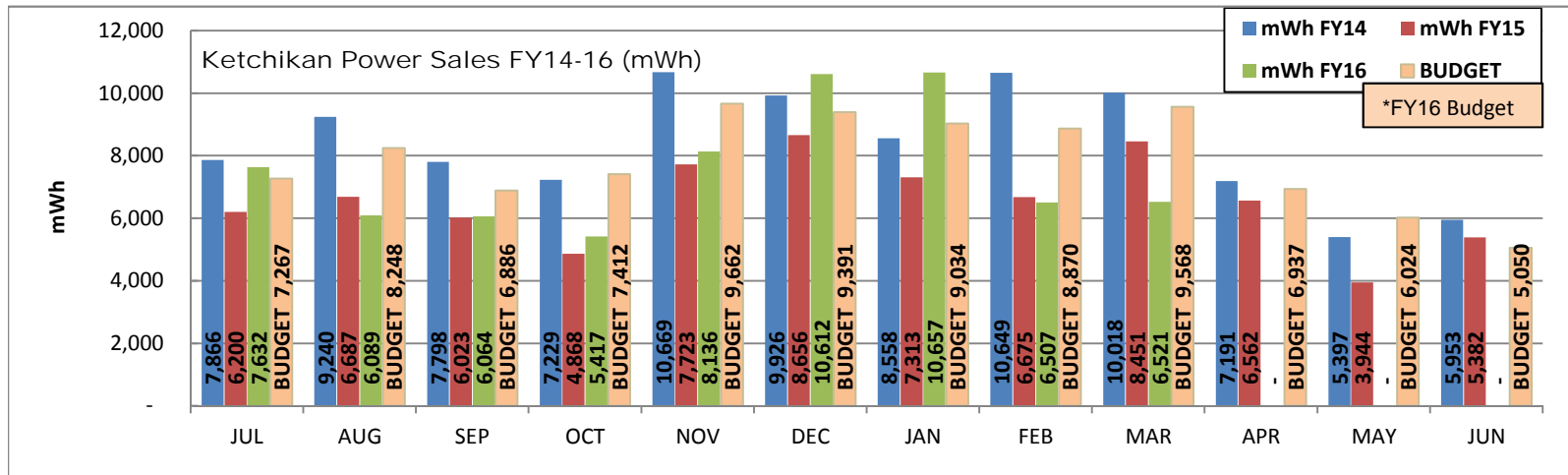
I move to approve disbursements for the months of February and March, 2016 in the amount of \$1,123,619.80

- **Disbursement Approval for February and March, 2016:**

The Suggested Motion for approval also appears on the first page of disbursements.

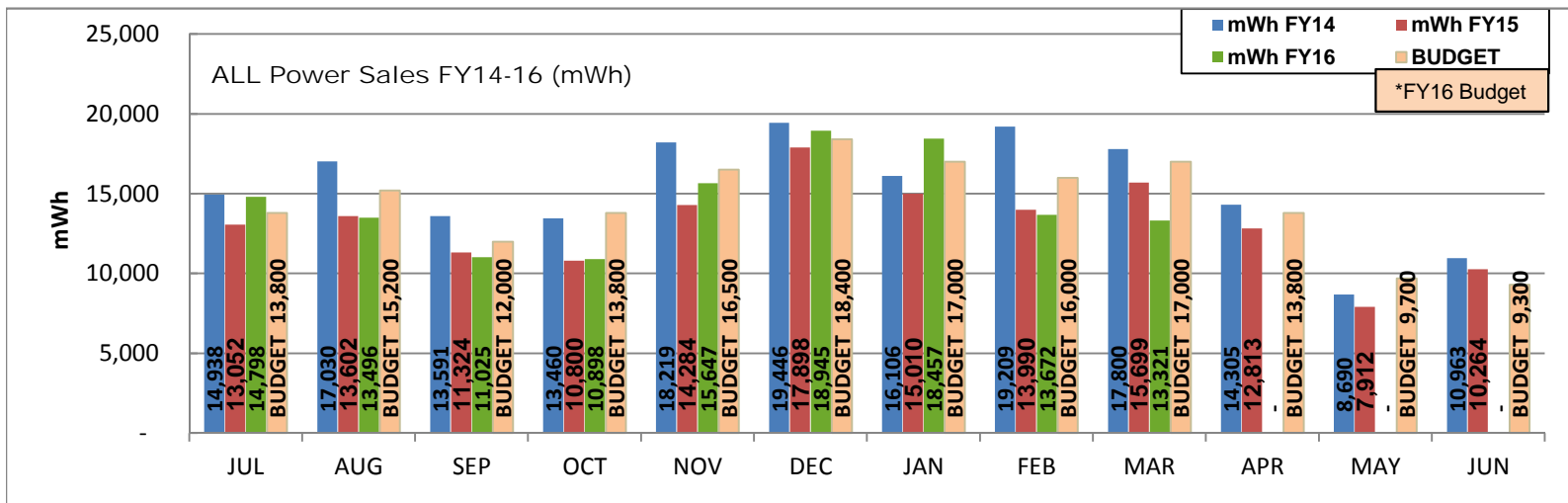
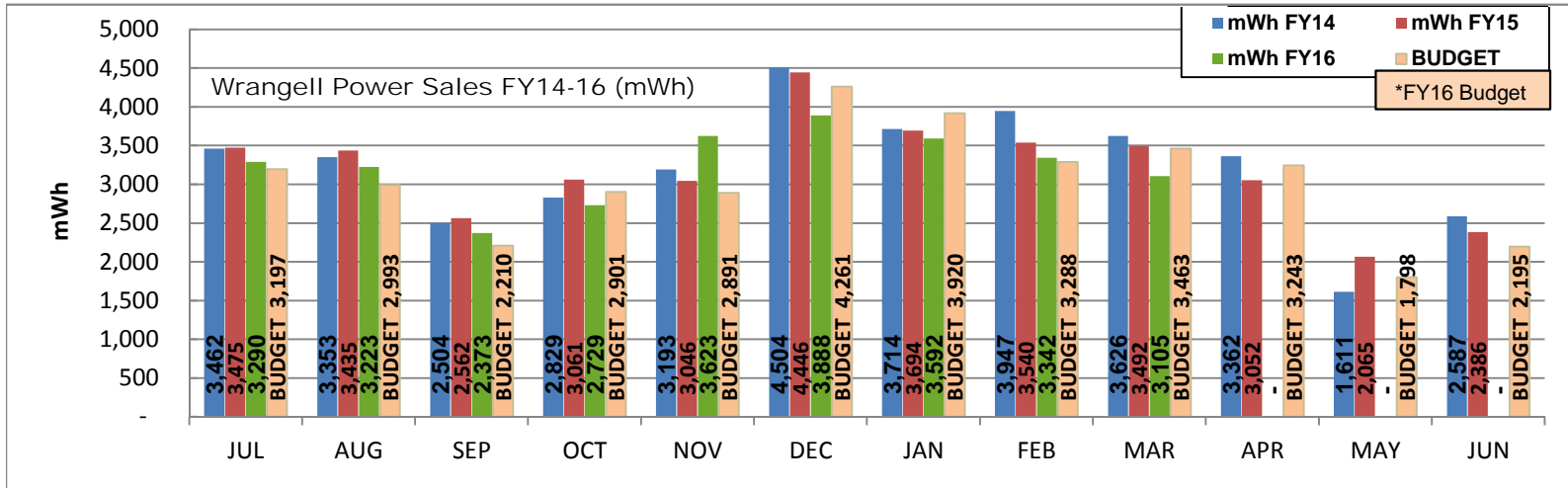
SOUTHEAST ALASKA POWER AGENCY
Power Sales - FY14 through FY16

MAR 2016	FY16 kWh Hydropower Sales	Current Month		Year-To-Date	
		Actual	Budget	Actual	Budget
		Ketchikan Power Purchases	6,520,960	9,567,600	67,635,736
Petersburg Power Purchases	3,695,247	3,969,500	33,457,678	34,237,420	
Wrangell Power Purchases	3,104,510	3,462,900	29,164,770	29,124,840	
Total Power Purchases	<u>13,320,717</u>	<u>17,000,000</u>	<u>130,258,184</u>	<u>139,700,000</u>	



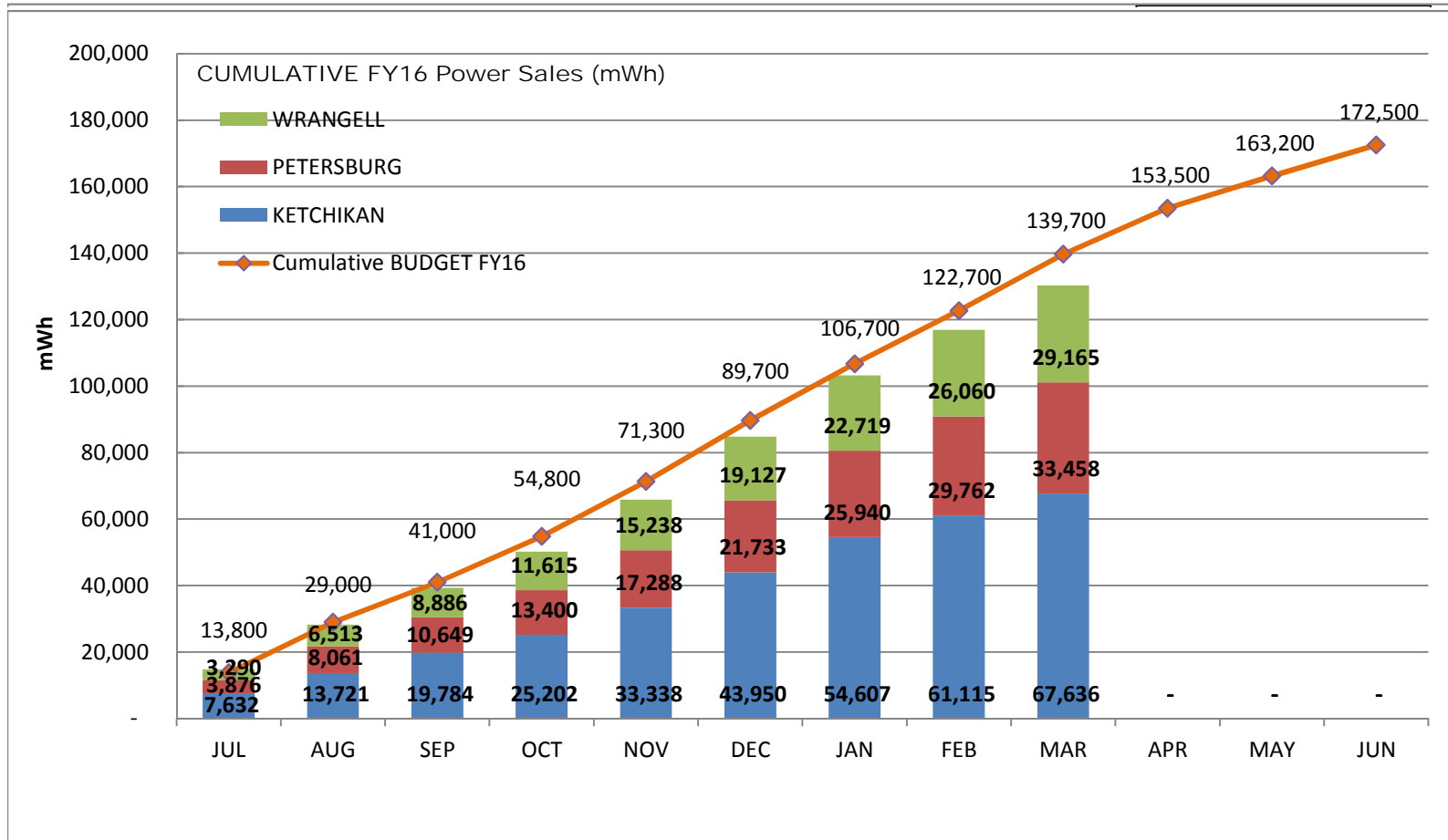
SOUTHEAST ALASKA POWER AGENCY
Power Sales - FY14 through FY16

MAR 2016	FY16 kWh Hydropower Sales	Current Month		Year-To-Date	
		Actual	Budget	Actual	Budget
		Ketchikan Power Purchases	6,520,960	9,567,600	67,635,736
Petersburg Power Purchases	3,695,247	3,969,500	33,457,678	34,237,420	
Wrangell Power Purchases	3,104,510	3,462,900	29,164,770	29,124,840	
Total Power Purchases	13,320,717	17,000,000	130,258,184	139,700,000	



SOUTHEAST ALASKA POWER AGENCY
Power Sales - FY14 through FY16

MAR 2016	FY16 kWh Hydropower Sales	Current Month		Year-To-Date	
		Actual	Budget	Actual	Budget
	Ketchikan Power Purchases	6,520,960	9,567,600	67,635,736	76,337,740
Petersburg Power Purchases	3,695,247	3,969,500	33,457,678	34,237,420	
Wrangell Power Purchases	3,104,510	3,462,900	29,164,770	29,124,840	
Total Power Purchases	<u>13,320,717</u>	<u>17,000,000</u>	<u>130,258,184</u>	<u>139,700,000</u>	



SOUTHEAST ALASKA POWER AGENCY

FY16 GRANT SUMMARY

as of FEBRUARY 29, 2016

*FY13 Alaska Energy Authority Kake-Petersburg Intertie Grant #1			
--	--	--	--

	Grant Award	Expenditures	Balance
1 - Project Mgmt	320,000	205,373	114,627
2 - EIS	1,030,000	1,022,482	7,518
3 - Engineering / Design	1,613,298	172,562	1,440,736
5 - SE Conference	26,702	26,702	(0)
TOTAL	2,990,000	1,427,119	1,562,881

*\$704,052.15 expended by Kwaan Electric Transmission Intertie Coop. prior to grant assignment to SEAPA

FY13 Alaska Energy Authority Kake-Petersburg Intertie Grant #2			
---	--	--	--

	Grant Award	Expenditures	Balance
TOTAL	2,000,000	0	2,000,000

FY13 Alaska Dept. of Commerce, Community & Economic Development			
--	--	--	--

	Grant Award	Expenditures	Balance
1 - Hydro Storage	578,000	578,000	0
2 - G&T Site Evaluation	1,705,000	1,268,521	436,479
3 - Stability / Interconnectivity	146,000	0	146,000
4 - Load Balance Model	112,000	98	111,902
5 - Project Mgmt	309,000	255,712	53,288
6 - Business Analysis / PSA	150,000	48,015	101,985
TOTAL	3,000,000	2,150,346	849,654

FY15 Alaska Dept. of Commerce, Community & Economic Development			
--	--	--	--

	Grant Award	Expenditures	Balance
Swan Lake Reservoir Expansion			
TOTAL	3,320,000	744,378	2,575,622

TOTAL ALL GRANTS	11,310,000	4,321,843	6,988,157
-------------------------	-------------------	------------------	------------------



FEBRUARY 2016 Financial Overview

FEBRUARY, 2016 revenues from kWh sales were under budget:
\$929,663 actual vs. \$1,088,000 budget.

- Ketchikan - \$442,507 actual vs. \$603,187 budget
- Petersburg - \$259,922 actual vs. \$261,229 budget
- Wrangell - \$227,234 actual vs. \$223,584 budget

Year-to-date (JULY – FEBRUARY) revenues from firm kWh sales are below budget:
\$7,951,748 actual vs. \$8,343,599 budget.

- Ketchikan - \$4,155,805 actual vs. \$4,540,368 budget
- Petersburg - \$2,023,845 actual vs. \$2,058,219 budget
- Wrangell - \$1,772,098 actual vs. \$1,745,012 budget

FEBRUARY, 2016 sales in kWh - 6,507,456

FEBRUARY, 2015 sales in kWh - 3,822,384

FEBRUARY, 2014 sales in kWh - 3,341,670

Year-to-date (JULY – FEBRUARY, 2016) sales in kWh – 61,114,776

Year-to-date (JULY – FEBRUARY, 2015) sales in kWh – 29,762,431

Year-to-date (JULY – FEBRUARY, 2014) sales in kWh – 26,060,260

Administrative and operating expenses for FEBRUARY, 2016 were below budget:
\$419,191 actual vs. \$517,695 budget

Year-to-date administrative and operating expenses (JULY – FEBRUARY) were also below budget: \$3,676,328 actual vs. \$4,419,993 budget.

As always, feel free to ask any questions concerning the financials.

AGENCY FUNDS

Operations, Capital and Insurance Funds

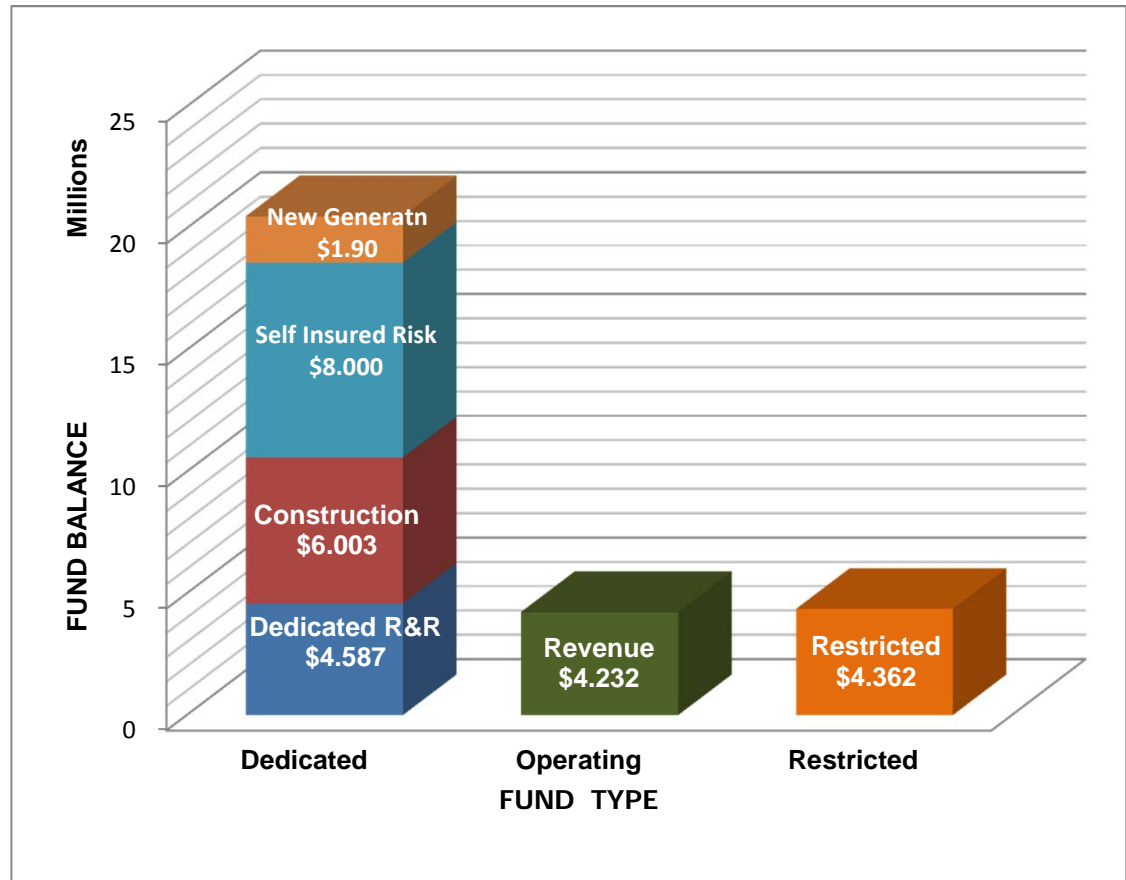
Revenue Fund FB	\$ 4,230,803
Required R&R Fund FB	1,001,629
Dedicated R&R Projects Fund FB	4,587,205
Construction Fund FB	6,003,010
Commercial FB	1,091
New Generation Fund	1,897,999
Self Insured Risk Fund FNBA	8,000,306
Total Operations, Capital and Insurance Funds	25,722,043

Trustee Funds

2009 Bond Interest	\$ 120,912
2009 Bond Principal	620,874
2009 Bond Reserve	1,410,157
2015 Bond Interest	121,922
2015 Bond Reserve	212,807
Total Trustee Funds	2,486,673

Other Restricted Funds

STI - USFS CD WF	\$ 21,622
DNR Reclamation Fund WF	852,265
Total Other Restricted Funds	873,887
Total Agency Funds	\$ 29,082,603



Dedicated Funds

- New Generation = Project feasibility funding (hydro, wind, geothermal)
- Self-Insured Risk = Coverage for uninsured transmission lines, submarine cables and insurance deductibles.
- Construction Fund = 2015 bond proceeds dedicated to Swan Lake Reservoir Expansion project.
- Dedicated R&R = Funds Replacement & Repair projects approved by the SEAPA Board in the FY15 budget.

Operating Funds

Revenue Fund & Commercial Checking: All SEAPA income is deposited to the Revenue Fund as required by Bond Indentures.

Restricted Funds (Legally or contractually restricted)

- Bonds = All Trustee Funds: Bond Interest, Principal, Reserve and Escrow accounts
- R&R = \$1,000,000 minimum balance required by bond indenture
- DNR = Alaska DNR Reclamation Agreement
- USFS = USFS Land Remediation Certificate of Deposit

SOUTHEAST ALASKA POWER AGENCY
Statement of Financial Position - Summary
as of February 29, 2016

ASSETS

Current Assets	
Agency Funds	
111000 · Ops/Capital/Insurance Funds	25,722,043
112000 · Trustee Funds	2,486,673
113000 · Other Restricted Funds	<u>873,887</u>
Total Agency Funds	29,082,603
Accounts Receivable	
110000 · Accounts Receivable	2,400,424
110100 · Grants Receivable	<u>123,058</u>
Total Accounts Receivable	2,523,483
Other Current Assets	
120000 · Other Current Assets	<u>1,325,137</u>
Total Other Current Assets	<u>1,325,137</u>
Total Current Assets	32,931,223
Fixed Assets	
130000 · Fixed Assets	<u>129,871,003</u>
Total Fixed Assets	129,871,003
Other Assets	
183000 · Deferred Assets	<u>401,153</u>
Total Other Assets	<u>401,153</u>
TOTAL ASSETS	<u><u>163,203,379</u></u>

LIABILITIES & NET POSITION

Liabilities	
Current Liabilities	
Accounts Payable	
210100 · Accounts Payable General	<u>203,956</u>
Total Accounts Payable	203,956
Other Current Liabilities	
210150 · Other Current Liabilities	320,710
210300 · Reserve Interest Payable	201,358
210400 · Wages Payable	169,248
210500 · Payroll Liabilities	<u>13,531</u>
Total Other Current Liabilities	<u>704,847</u>
Total Current Liabilities	908,803
Long Term Liabilities	
220000 · Long Term Liabilities	<u>19,606,494</u>
Total Long Term Liabilities	<u>19,606,494</u>
Total Liabilities	20,515,297
Net Position	
310000 · Net Position	140,879,386
Net Income	<u>1,808,696</u>
Total Net Position	<u>142,688,083</u>
TOTAL LIABILITIES & NET POSITION	<u><u>163,203,379</u></u>

SOUTHEAST ALASKA POWER AGENCY
Statement of Activities Summary
February 2016

Operating Income/Expense	
Operating Income	
410000 · Hydro Facility Revenues	929,663
Total Operating Income	<u>929,663</u>
Gross Income	929,663
Operating Expense	
535000 · Hydro Ops-Suprvsn & Engineering	604
538000 · Electric Expenses	752
539000 · Misc Power Generation Expense	25,101
540000 · Rents	12,659
541000 · Hydro Power Station Maintenance	5,332
544000 · Maintenance of Electric Plant	91,787
545000 · Plant Miscellaneous Maintenance	528
561000 · Control System Maintenance	9,916
562000 · Trans/Operations Station Exp	2,224
571000 · Trans/Maint Overhead Lines(OHL)	25,981
920000 · Administrative Expenses	119,164
921000 · Office Expenses	11,386
922000 · Legislative Affairs	4,000
923000 · Contract Services	38,221
924000 · Insurance	39,572
928000 · Regulatory Commission Expense	13,100
930000 · General Expenses	11,692
931000 · Admin Rent	7,171
Total Operating Expense	<u>419,191</u>
Net Operating Income	510,472
Non-Operating Income/Expense	
Non-Operating Income	
941000 · Grant Income	143,938
942000 · Interest Income	883
944000 · Realized Gain/Loss	(2,055)
945000 · Unrealized Gain/Loss	4,443
Total Non-Operating Income	<u>147,208</u>
Non-Operating Expense	
952000 · Bond Interest 2009 Series	32,437
952001 · Bond Interest 2015 Series	35,635
953000 · Depreciation Expense	339,212
954000 · Grant Expenses	97,576
954100 · Contributed Capital	(86,478)
955000 · Interest Expense	<u>2,620.69</u>
Total Non-Operating Expense	<u>421,003</u>
Net Non-Operating Income	<u>(273,795)</u>
Net Income	<u><u>236,677</u></u>

SOUTHEAST ALASKA POWER AGENCY
Statement of Financial Position - Detail
as of February 29, 2016

ASSETS

Current Assets

Agency Funds

111000 · Ops/Capital/Insurance Funds	
111100 · Revenue Fund FB	4,230,803
111200 · Required R&R Fund FB	1,001,629
111210 · Dedicated R&R Projects Fund FB	4,587,205
111211 · Construction Fund FB	6,003,010
111300 · Commercial FB	1,091
111401 · New Generation Fund	1,897,999
111500 · Self Insured Risk Fund FNBA	8,000,306
Total 111000 · Ops/Capital/Insurance Funds	<u>25,722,043</u>
112000 · Trustee Funds	
112100 · WF Trust 2009 Bond Interest	120,912
112200 · WF Trust 2009 Bond Principal	620,874
112300 · WF Trust 2009 Bond Reserve	1,410,157
112501 · WF Trust 2015 Bond Interest	121,922
112503 · WF Trust 2015 Bond Reserve	212,807
Total 112000 · Trustee Funds	<u>2,486,673</u>
113000 · Other Restricted Funds	
113100 · STI - USFS CD WF	21,622
113500 · DNR Reclamation Fund WF	852,265
Total 113000 · Other Restricted Funds	<u>873,887</u>
Total Agency Funds	<u>29,082,603</u>

Accounts Receivable

110000 · Accounts Receivable	2,400,424
110100 · Grants Receivable	123,058
Total Accounts Receivable	<u>2,523,483</u>

Other Current Assets

120000 · Other Current Assets	
120200 · Other Receivables	4,606
120300 · Accrued Interest Receivable	32,436
120500 · Prepaid Fees	
120520 · Prepaid Insurance	197,860
120530 · Prepaid Operating Expense	11,808
120540 · Prepaid USDA FS Land Use Fees	80,988
120550 · Prepaid Admin Benefits	44,489
Total 120500 · Prepaid Fees	<u>335,144</u>
120700 · Inventory Assets	
120701 · Inventory - Wood Poles	8,143
120702 · Inventory - Marker Balls	54,404
1207031 · Inventory-SWL Winding Replacmnt	890,405
Total 120700 · Inventory Assets	<u>952,952</u>
Total 120000 · Other Current Assets	<u>1,325,137</u>
Total Other Current Assets	<u>1,325,137</u>
Total Current Assets	<u>32,931,223</u>

SOUTHEAST ALASKA POWER AGENCY
Statement of Financial Position - Detail
as of February 29, 2016

Fixed Assets	
130000 · Fixed Assets	
130100 · Capital Assets	
130110 · Swan Lake	16,428,278
130120 · Tye Lake	27,566,918
130130 · SEAPA Office	733,897
132100 · Swan Tye Intertie in Operation	<u>111,578,874</u>
Total 130100 · Capital Assets	156,307,967
132200 · R&R Projects WIP Capital Improv	
132210 · R&R Projects - WIP Swan Lake	
1322100 · R&R WIP SWL- Reservoir Increase	
1322101 · WIP SWL Agency Permits/Environm	750,630
1322103 · WIP SWL Equipment	2,261
1322104 · WIP SWL Engineering/Design	1,138,200
1322105 · WIP SWL Legal	58,057
1322106 · WIP SWL Project Mgmt/Professnal	<u>181,114</u>
Total 1322100 · R&R WIP SWL- Reservoir Increase	2,130,262
132210 · R&R Projects - WIP Swan Lake - Other	<u>1,662,498</u>
Total 132210 · R&R Projects - WIP Swan Lake	3,792,759
132220 · R&R Projects - WIP Tye Lake	2,020,104
132230 · R&R Projects - WIP STI-Transmsn	2,118,488
132240 · R&R Projects - WIP SEAPA Office	<u>94,689</u>
Total 132200 · R&R Projects WIP Capital Improv	8,026,041
132900 · Accumulated Depreciation	<u>(34,463,005)</u>
Total 130000 · Fixed Assets	<u>129,871,003</u>
Total Fixed Assets	129,871,003
Other Assets	
183000 · Deferred Assets	
183001 · Long Term Receivable	242,499
183003 · 2009 Bond - Refunded Discount	154,512
183300 · Meterological Tower	4,142
Total 183000 · Deferred Assets	<u>401,153</u>
Total Other Assets	401,153
TOTAL ASSETS	<u>163,203,379</u>

SOUTHEAST ALASKA POWER AGENCY
Statement of Financial Position - Detail
as of February 29, 2016

LIABILITIES & EQUITY

Liabilities

Current Liabilities

Accounts Payable

210100 · Accounts Payable General 203,956

Total Accounts Payable 203,956

Other Current Liabilities

210150 · Other Current Liabilities

210152 · DNR Fund - CVEA KEA Portion 262,500

210150 · Other Current Liabilities - Other 58,210

Total 210150 · Other Current Liabilities 320,710

210300 · Reserve Interest Payable 201,358

210400 · Wages Payable 169,248

210500 · Payroll Liabilities

210522 · SUI Tax Payable 3,359

210531 · IBEW H&W Payable 5,145

210540 · 457(b) Payable 1,217

210541 · IBEW Pension Payable 3,066

210550 · IBEW Dues Payable 743

Total 210500 · Payroll Liabilities 13,531

Total Other Current Liabilities 704,847

Total Current Liabilities 908,803

Long Term Liabilities

220000 · Long Term Liabilities

220100 · Series B Bonds 2009 7,905,000

220120 · 2009 Bond Issuance Discount (33,280)

220121 · PERS Unfunded Liability WRG 488,768

220130 · Series 2015 Bonds 10,295,000

220131 · 2015 Bond Issuance Premium 951,007

Total 220000 · Long Term Liabilities 19,606,494

Total Long Term Liabilities 19,606,494

Total Liabilities **20,515,297**

Net Position

310000 · Net Position

3100001 · Net Investment Capital Assets 109,374,861

3100002 · Restricted for Debt Service 1,622,843

3100003 · Restricted by External Agreement 873,886

3100004 · Unrestricted 29,007,796

Total 310000 · Net Position 140,879,386

Net Income 1,808,696

Total Net Position **142,688,083**

TOTAL LIABILITIES & NET POSITION **163,203,379**

SOUTHEAST ALASKA POWER AGENCY
Statement of Activities - Budget Comparison Detail
February 2016

	FEB 2016	Budget	Jul'15-Feb '16	YTD Budget	Annual Budget
Operating Income/Expense					
Operating Income					
410000 · Hydro Facility Revenues					
410100 · Ketchikan Power Purchases	442,507	603,187	4,155,805	4,540,368	6,415,704
410200 · Petersburg Power Purchases	259,922	261,229	2,023,845	2,058,219	2,841,746
410300 · Wrangell Power Purchases	227,234	223,584	1,772,098	1,745,012	2,472,550
412100 · Displaced Power Sales Ketchikan	-	-	338,152	-	-
Total 410000 · Hydro Facility Revenues	929,663	1,088,000	8,289,900	8,343,599	11,730,000
Total Operating Income	929,663	1,088,000	8,289,900	8,343,599	11,730,000
Operating Expense					
535000 · Hydro Ops-Suprvsn & Engineering					
535100 · Hyd/Ops Sup & Eng - Swan Lake	494	2,400	12,624	18,600	28,480
535150 · Hyd/Ops Sup & Eng - SWL SEAPA	110	110	7,966	9,910	10,350
535250 · Hyd/Ops Sup & Eng -TYL SEAPA	-	-	82,086	82,000	84,000
535400 · Hyd/Op Sup & Eng - Proj Drawing	-	10,000	17,151	56,750	96,750
Total 535000 · Hydro Ops-Suprvsn & Engineering	604	12,510	119,828	167,260	219,580
537000 · Hydraulic Expenses					
537150 · Hydraulic Expense - SWL SEAPA	-	-	-	-	4,000
537250 · Hydraulic Expense - TYL SEAPA	-	-	-	-	4,000
Total 537000 · Hydraulic Expenses	-	-	-	-	8,000
538000 · Electric Expenses					
538100 · Electric Expense - Swan Lake	752	2,000	9,155	16,000	24,500
538150 · Electric Expense - SWL SEAPA	-	9,000	31,435	56,000	89,200
538200 · Electric Expense - Tye Lake	-	1,500	17,532	12,000	18,000
538250 · Electric Expense - TYL SEAPA	-	5,500	870	43,000	65,000
Total 538000 · Electric Expenses	752	18,000	58,991	127,000	196,700
539000 · Misc Power Generation Expense					
539100 · Misc Exp - Swan Lake	4,484	8,000	71,639	64,000	96,690
539150 · Misc Expense - SWL SEAPA	4,597	7,000	44,881	54,000	82,000
539200 · Misc Expense - Tye Lake	3,814	8,000	63,927	63,000	97,000
539250 · Misc Expense - TYL SEAPA	12,207	17,000	99,271	134,858	202,858
Total 539000 · Misc Power Generation Expense	25,101	40,000	279,719	315,858	478,548
540000 · Rents					
540300 · FERC Land Use Fee - Swan Lake	1,090	1,050	8,123	8,300	12,500
540400 · FERC Land Use Fee - Tye Lake	3,470	3,440	27,121	27,240	41,000
540500 · USDA Land Use Fee - USFS ROW	1,956	1,730	13,513	13,830	20,750
540600 · USDA Land Use Fee - STI	5,990	5,000	41,389	40,000	60,000
540700 · USDA Tye Passive Reflector	108	125	859	1,000	1,500
540710 · USDA Etolin Burnett Radio	45	50	363	425	625
Total 540000 · Rents	12,659	11,395	91,368	90,795	136,375
541000 · Hydro Power Station Maintenance					
541100 · Maintenance - Swan Lake	51	1,500	8,225	13,500	20,500
541150 · Maintenance - SWL SEAPA	-	2,500	16,187	21,500	32,500
541200 · Maintenance - Tye Lake	5,281	1,500	15,020	11,500	19,000
541250 · Maintenance - TYL SEAPA	-	5,000	2,221	39,500	59,500
Total 541000 · Hydro Power Station Maintenance	5,332	10,500	41,654	86,000	131,500
543000 · Dams, Reservoirs & Waterways					
543150 · Dams Res & Waterwys - SWL SEAPA	-	-	23,126	23,000	25,000
543200 · Dams Res & Waterwys - Tye Lake	-	-	317	4,000	6,500
543250 · Dams Res & Waterwys - TYL SEAPA	-	-	25,782	37,000	49,700
Total 543000 · Dams, Reservoirs & Waterways	-	-	49,225	64,000	81,200

SOUTHEAST ALASKA POWER AGENCY
Statement of Activities - Budget Comparison Detail
February 2016

	FEB 2016	Budget	Jul'15-Feb '16	YTD Budget	Annual Budget
544000 · Maintenance of Electric Plant					
544100 · Maint Electric Plant-Swan Lake	40,367	45,000	388,563	385,000	589,715
5442900 · TYL Plant Wages & Benefits					
5442911 · TYL Plant Wages/PTO	34,790	30,000	247,293	235,000	374,000
5442912 · TYL Plant Wages OT	2,699	2,000	16,670	11,750	35,000
5442920 · TYL Plant Benefit - Taxes	2,994	2,700	18,820	21,150	33,300
5442930 · TYL Plant Benefits - Insurance	6,718	5,700	50,385	44,400	69,000
5442940 · TYL Plant Benefits - Retirement	4,219	4,400	31,076	34,400	54,700
5442992 · TYL Plant Grant-Capital Payroll	-		(4,839)		
Total 5442900 · TYL Plant Wages & Benefits	51,420	44,800	359,404	346,700	566,000
Total 544000 · Maintenance of Electric Plant	91,787	89,800	747,967	731,700	1,155,715
545000 · Plant Miscellaneous Maintenance					
545100 · Plant Misc Maint - Swan Lake	55	3,000	19,015	17,000	29,500
545150 · Plant Misc Maint - SWL SEAPA	-	-	6,890	10,000	20,000
545200 · Plant Misc Maint - Tye Lake	473	1,500	11,177	15,000	24,500
Total 545000 · Plant Miscellaneous Maintenance	528	4,500	37,082	42,000	74,000
561000 · Control System Maintenance					
561150 · Control System Maint. - SWL	4,958	750	22,856	4,500	7,500
561250 · Control System Maint. - TYL	4,958	750	25,930	4,500	7,500
Total 561000 · Control System Maintenance	9,916	1,500	48,786	9,000	15,000
562000 · Trans/Operations Station Exp					
562100 · Trans/Ops Station - Swan Lake	-	500	-	4,000	15,000
562200 · Trans/Ops Station - Tye Lake	570	1,200	4,434	8,900	14,200
562250 · Trans/Ops Station-TYL SEAPA	1,654	16,000	13,019	61,000	156,500
Total 562000 · Trans/Operations Station Exp	2,224	17,700	17,452	73,900	185,700
564000 · Trans/Submarine Cable Expense					
564200 · Trans/Sub Cable Exp - Tye Lake	-	-	-	-	2,000
Total 564000 · Trans/Submarine Cable Expense	-	-	-	-	2,000
571000 · Trans/Maint Overhead Lines(OHL)					
571100 · Trans/Maint OHL - Swan Lake	-	3,000	11,599	26,000	50,000
571150 · Trans/Maint OHL - SWL SEAPA	1,278	1,000	8,273	22,500	198,630
571151 · Trans/Maint OHL - SWL ROW Clear	1,987	-	205,431	250,000	250,000
571200 · Trans/Maint OHL - Tye Lake	2,053	2,000	36,488	30,000	54,250
571250 · Trans/Maint OHL - TYL SEAPA	1,278	5,000	22,379	40,000	298,880
5712900 · TYL Brushing Wages & Benefits					
5712911 · TYL Brushing Wages/PTO	11,955	11,000	86,196	85,000	137,000
5712912 · TYL Brushing Wages OT	-	1,500	2,283	5,500	13,000
5712920 · TYL Brushing Benefit - Taxes	946	1,000	11,600	7,750	13,100
5712930 · TYL Brushing Benefit- Insurance	3,359	2,750	25,193	20,500	34,200
5712940 · TYL Brushing Benefit- Retirement	1,848	2,000	14,713	15,500	26,700
5712992 · TYL Brush Grant-Capital Payroll	-		(9,758)		
Total 5712900 · TYL Brushing Wages & Benefits	18,108	18,250	130,225	134,250	224,000
571300 · Trans/Maint OHL STI Maintenance	1,278	5,000	1,628	39,500	314,150
571500 · Trans/Maint OHL STI Therml Scan	-	-	2,113	2,000	2,000
571800 · Trans/Maint OHL System Events	-	10,000	-	60,000	100,000
Total 571000 · Trans/Maint Overhead Lines(OHL)	25,981	44,250	418,136	604,250	1,491,910

SOUTHEAST ALASKA POWER AGENCY
Statement of Activities - Budget Comparison Detail
February 2016

	FEB 2016	Budget	Jul'15-Feb '16	YTD Budget	Annual Budget
920000 · Admin Wages & Benefits					
9201911 · Admin Wages/PTO	70,033	72,000	524,602	542,000	866,500
9201912 · Admin Wages - Overtime	-	140	218	940	1,500
9201920 · Admin Benefit - Taxes	6,199	5,000	30,051	39,800	61,000
9201930 · Admin Benefit - H&W Insurance	18,149	17,000	121,108	120,000	195,000
9201940 · Admin Benefit - Retirement	24,783	25,000	163,208	170,100	289,000
9201992 · Admin Grant Payroll	-	-	(1,118)	-	-
Total 920000 · Admin Wages & Benefits	119,164	119,140	838,070	872,840	1,413,000
921000 · Office Expenses					
921100 · Office Supplies	1,457	1,250	11,781	10,000	15,000
921200 · Office Equipment	595	2,000	64,716	63,100	72,100
921300 · Phone, Courier, Internet	6,550	7,400	55,648	59,200	88,960
921400 · System Network / IT Support	2,549	4,000	29,224	32,000	48,000
921600 · Vehicle Expenses	234	300	1,286	2,300	3,500
Total 921000 · Office Expenses	11,386	14,950	162,655	166,600	227,560
922000 · Legislative Affairs	4,000	6,000	32,370	41,000	65,000
923000 · Contract Services					
923200 · Annual Financial Audit	-	-	31,530	29,500	29,500
923300 · Bank & Trustee Fees	2,733	7,750	9,678	14,750	16,150
923400 · Insurance Consultant	-	500	5,726	4,000	7,500
923500 · Investment Consultant	1,669	2,000	13,301	19,000	27,000
923600 · Legal Fees	29,349	15,000	115,238	120,000	180,000
923700 · Recruitment	-	2,000	-	14,000	22,000
923800 · Other Professional Services	4,527	19,000	31,476	124,000	203,000
Total 923000 · Contract Services	38,278	46,250	206,949	325,250	485,150
924000 · Insurance	39,572	46,800	318,840	369,700	556,900
926000 · Retiree Benefits					
926250 · Retiree Benefits TYL-PERS	-	-	-	40,000	40,000
Total 926000 · Retiree Benefits	-	-	-	40,000	40,000
928000 · Regulatory Commission Expense					
928001 · Other Regulatory Expense	-	3,650	81	27,650	39,650
928150 · FERC SWL Admin Fees	3,742	3,000	25,032	27,000	40,000
928151 · FERC SWL Other Expenses	6,018	2,000	10,980	17,000	25,700
928250 · FERC TYL Admin Fees	3,340	3,000	23,638	24,000	37,000
928251 · FERC TYL Other Expenses	-	300	1,461	2,400	3,800
Total 928000 · Regulatory Commission Expense	13,100	11,950	61,192	98,050	146,150
930000 · General Expenses					
930100 · Advertising Expense	89	400	1,120	3,350	5,000
930110 · Public Relations	274	2,000	14,276	18,500	27,500
930111 · PR - SEAPA History Project	-	1,500	-	8,000	15,000
930300 · Association Dues Expense	620	500	31,623	31,130	32,330
930310 · Professional Assn Dues	-	450	404	750	750
930400 · Board Meeting Expenses	4,915	4,000	14,664	30,000	45,000
930500 · Training Expense	3,463	2,500	14,210	18,000	28,700
930600 · Travel Expense	2,309	3,500	13,997	29,500	43,000
930700 · Non-Travel Incidental	(36)	250	2,419	2,000	3,000
Total 930000 · General Expenses	11,635	15,100	92,714	141,230	200,280
931000 · Admin Rent					
931010 · Office Rent	5,416	5,400	39,246	37,960	59,560
931100 · Apartment Rent - Ketchikan	1,755	1,950	14,085	15,600	23,400
Total 931000 · Admin Rent	7,171	7,350	53,331	53,560	82,960
Total Operating Expense	419,191	517,695	3,676,328	4,419,993	7,393,228
Net Operating Income	510,472	570,305	4,613,572	3,923,606	4,336,772

SOUTHEAST ALASKA POWER AGENCY
Statement of Activities - Budget Comparison Detail
February 2016

	FEB 2016	Budget	Jul'15-Feb '16	YTD Budget	Annual Budget
Nonoperating Income/Expense					
Nonoperating Income					
941000 · Grant Income	143,938		733,440		
942000 · Interest Income					
942100 · Misc Interest Income	883		7,794		
942200 · Investment Interest Income	-		88,291		
Total 942000 · Interest Income	883		96,085		
944000 · Realized Gain/Loss					
944200 · Realized Gain/Loss on Invest	(2,055)		(47,282)		
Total 944000 · Realized Gain/Loss	(2,055)		(47,282)		
945000 · Unrealized Gain/Loss					
945200 · Unrealized Gain/Loss Investment	4,443		(9,657)		
Total 945000 · Unrealized Gain/Loss	4,443		(9,657)		
946000 · Misc Nonoperating Income					
946002 · Gain/Loss on Property Dispositn	-		4,108		
Total 946000 · Misc Nonoperating Income	-		4,108		
Total Nonoperating Income	147,208		776,695		
Nonoperating Expense					
950002 · Special Item- Tye Op Transitn	-		-		
950004 · Abandoned Feasibility Expense	-		71,785		
952000 · Bond Interest 2009 Series	32,437		247,227		
952001 · Bond Interest 2015 Series	35,635		313,299		
953000 · Depreciation Expense	339,212		2,713,694		
954000 · Grant Expenses					
954002 · Grant Contractual	93,189		782,696		
954004 · Grant Labor & Benefits	-		5,251		
954005 · Grant Legal	2,065		34,592		
954006 · Grant Materials & Supplies	-		74		
954007 · Grant Other Expense	1,025		8,895		
954008 · Grant Travel	1,297		29,865		
Total 954000 · Grant Expenses	97,576		861,372		
954100 · Contributed Capital	(86,478)		(637,948)		
955000 · Interest Expense					
955200 · Investment Interest Expense	2,621		12,142		
Total 955000 · Interest Expense	2,621		12,142		
Total Nonoperating Expense	421,003		3,581,571		
Net Nonoperating Income	(273,795)		(2,804,876)		
Net Income	236,677	570,305	1,808,696	3,923,606	4,336,772



JANUARY 2016 Financial Overview

JANUARY, 2016 revenues from kWh sales were over budget:
\$1,255,057 actual vs. \$1,156,000 budget.

- Ketchikan - \$724,693 actual vs. \$614,298 budget
- Petersburg - \$286,107 actual vs. \$275,128 budget
- Wrangell - \$244,258 actual vs. \$266,574 budget

Year-to-date (JULY – JANUARY) revenues from firm kWh sales are below budget:
\$7,022,085 actual vs. \$7,255,599 budget.

- Ketchikan - \$3,713,298 actual vs. \$3,937,181 budget
- Petersburg - \$1,763,923 actual vs. \$1,796,990 budget
- Wrangell - \$1,544,864 actual vs. \$1,521,428 budget

JANUARY, 2016 sales in kWh – 18,456,727

JANUARY, 2015 sales in kWh – 15,010,390

JANUARY, 2014 sales in kWh – 16,106,030

Year-to-date (JULY – JANUARY, 2016) sales in kWh – 103,265,957

Year-to-date (JULY – JANUARY, 2015) sales in kWh – 95,970,660

Year-to-date (JULY – JANUARY, 2014) sales in kWh – 112,789,990

Administrative and operating expenses for JANUARY, 2016 were below budget:
\$411,222 actual vs. \$503,895 budget

Year-to-date administrative and operating expenses (JULY – JANUARY) were also below budget: \$3,257,137 actual vs. \$3,902,298 budget.

The one-time PERS lump-sum termination liability of \$159,440, related to the August, 2014 transition of Tye Lake operations, was paid to Wrangell in January. The lag in payment took place as Wrangell waited to be invoiced by the State. SEAPA recorded this expense in FY2015 and its January payment reduced our Accounts Payable.

As always, feel free to ask any questions concerning the financials.

AGENCY FUNDS

Operations, Capital and Insurance Funds

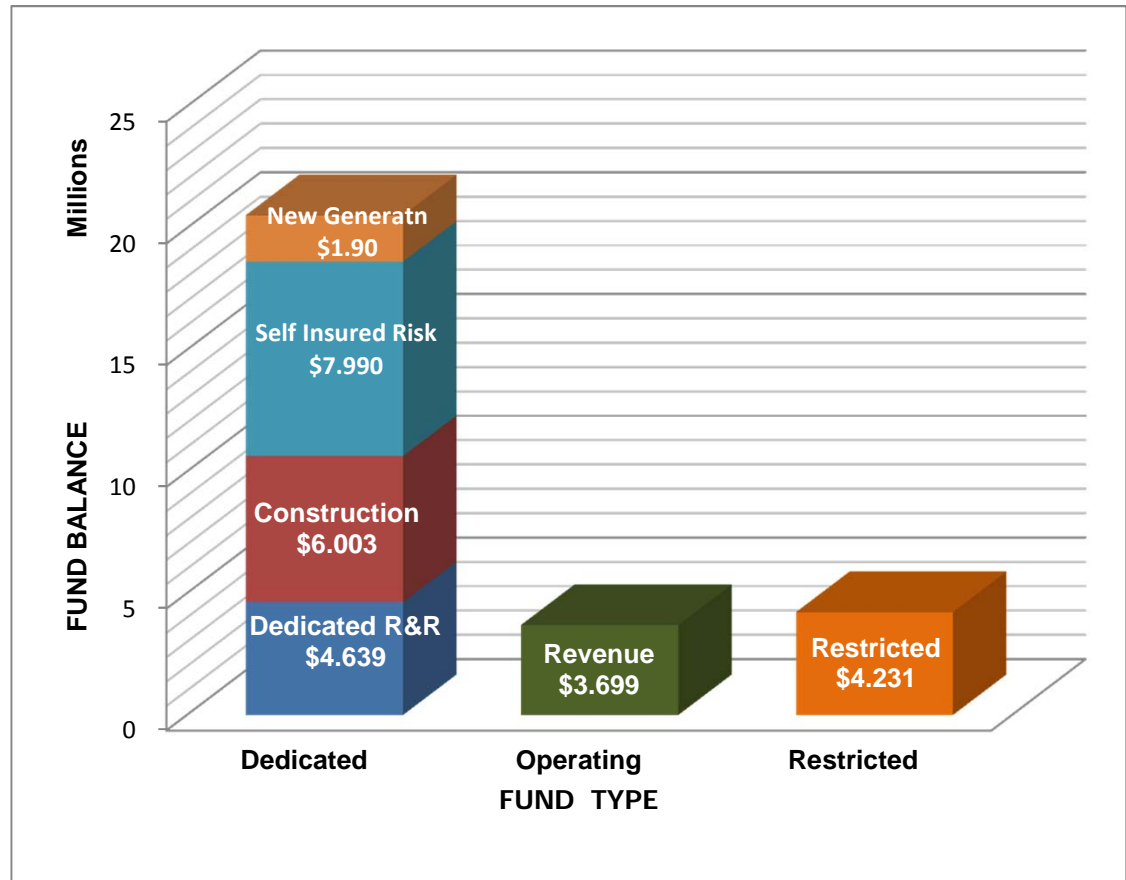
Revenue Fund FB	\$ 3,697,707
Required R&R Fund FB	1,001,581
Dedicated R&R Projects Fund FB	4,638,662
Construction Fund FB	6,002,719
Commercial FB	1,091
New Generation Fund	1,897,985
Self Insured Risk Fund FNBA	7,989,822
Total Operations, Capital and Insurance Funds	25,229,567

Trustee Funds

2009 Bond Interest	\$ 92,290
2009 Bond Principal	558,790
2009 Bond Reserve	1,410,133
2015 Bond Interest	81,281
2015 Bond Reserve	212,805
Total Trustee Funds	2,355,300

Other Restricted Funds

STI - USFS CD WF	\$ 21,622
DNR Reclamation Fund WF	852,265
Total Other Restricted Funds	873,887
Total Agency Funds	\$ 28,458,754



Dedicated Funds

- New Generation = Project feasibility funding (hydro, wind, geothermal)
- Self-Insured Risk = Coverage for uninsured transmission lines, submarine cables and insurance deductibles.
- Construction Fund = 2015 bond proceeds dedicated to Swan Lake Reservoir Expansion project.
- Dedicated R&R = Funds Replacement & Repair projects approved by the SEAPA Board in the FY15 budget.

Operating Funds

Revenue Fund & Commercial Checking: All SEAPA income is deposited to the Revenue Fund as required by Bond Indentures.

Restricted Funds (Legally or contractually restricted)

- Bonds = All Trustee Funds: Bond Interest, Principal, Reserve and Escrow accounts
- R&R = \$1,000,000 minimum balance required by bond indenture
- DNR = Alaska DNR Reclamation Agreement
- USFS = USFS Land Remediation Certificate of Deposit

SOUTHEAST ALASKA POWER AGENCY
Statement of Financial Position - Summary
As of January 31, 2016

ASSETS

Current Assets	
Agency Funds	
111000 · Ops/Capital/Insurance Funds	25,229,567
112000 · Trustee Funds	2,355,300
113000 · Other Restricted Funds	<u>873,887</u>
Total Agency Funds	28,458,754
Accounts Receivable	
110000 · Accounts Receivable	2,704,677
110100 · Grants Receivable	<u>111,571</u>
Total Accounts Receivable	2,816,249
Other Current Assets	
120000 · Other Current Assets	<u>1,371,382</u>
Total Other Current Assets	<u>1,371,382</u>
Total Current Assets	32,646,385
Fixed Assets	
130000 · Fixed Assets	<u>130,084,419</u>
Total Fixed Assets	130,084,419
Other Assets	
183000 · Deferred Assets	<u>402,773</u>
Total Other Assets	<u>402,773</u>
TOTAL ASSETS	<u><u>163,133,577</u></u>

LIABILITIES & NET POSITION

Liabilities	
Current Liabilities	
Accounts Payable	
210100 · Accounts Payable General	<u>455,098</u>
Total Accounts Payable	455,098
Other Current Liabilities	
210150 · Other Current Liabilities	309,068
210300 · Reserve Interest Payable	130,344
210400 · Wages Payable	164,706
210500 · Payroll Liabilities	<u>11,822</u>
Total Other Current Liabilities	<u>615,940</u>
Total Current Liabilities	1,071,037
Long Term Liabilities	
220000 · Long Term Liabilities	<u>19,611,134</u>
Total Long Term Liabilities	<u>19,611,134</u>
Total Liabilities	20,682,171
Net Position	
310000 · Net Position	140,879,386
Net Income	<u>1,572,019</u>
Total Net Position	<u>142,451,405</u>
TOTAL LIABILITIES & NET POSITION	<u><u>163,133,577</u></u>

SOUTHEAST ALASKA POWER AGENCY
Statement of Activities Summary
January 2016

Operating Income/Expense	
Operating Income	
410000 · Hydro Facility Revenues	<u>1,255,057</u>
Total Operating Income	<u>1,255,057</u>
Gross Income	1,255,057
Operating Expense	
535000 · Hydro Ops-Suprvsn & Engineering	885
538000 · Electric Expenses	4,201
539000 · Misc Power Generation Expense	24,870
540000 · Rents	12,659
541000 · Hydro Power Station Maintenance	10,360
544000 · Maintenance of Electric Plant	96,289
545000 · Plant Miscellaneous Maintenance	3,545
561000 · Control System Maintenance	4,444
562000 · Trans/Operations Station Exp	4,647
571000 · Trans/Maint Overhead Lines(OHL)	23,225
920000 · Administrative Expenses	108,733
921000 · Office Expenses	11,302
922000 · Legislative Affairs	4,000
923000 · Contract Services	15,186
924000 · Insurance	39,572
928000 · Regulatory Commission Expense	7,092
930000 · General Expenses	33,060
931000 · Admin Rent	<u>7,151</u>
Total Operating Expense	<u>411,222</u>
Net Operating Income	<u>843,835</u>
Non-Operating Income/Expense	
Non-Operating Income	
941000 · Grant Income	82,680
942000 · Interest Income	16,837
944000 · Realized Gain/Loss	(2,813)
945000 · Unrealized Gain/Loss	<u>37,131</u>
Total Non-Operating Income	<u>133,836</u>
Non-Operating Expense	
950002 · Special Item- Tye Op Transitn	0.00
952000 · Bond Interest 2009 Series	30,684
952001 · Bond Interest 2015 Series	35,635
953000 · Depreciation Expense	339,212
954000 · Grant Expenses	151,305
954100 · Contributed Capital	<u>(142,254)</u>
Total Non-Operating Expense	<u>414,582</u>
Net Non-Operating Income	<u>(280,746)</u>
Net Income	<u><u>563,089</u></u>

SOUTHEAST ALASKA POWER AGENCY
Statement of Financial Position - Detail
As of January 31, 2016

ASSETS

Current Assets

Agency Funds

111000 · Ops/Capital/Insurance Funds	
111100 · Revenue Fund FB	3,697,707
111200 · Required R&R Fund FB	1,001,581
111210 · Dedicated R&R Projects Fund FB	4,638,662
111211 · Construction Fund FB	6,002,719
111300 · Commercial FB	1,091
111401 · New Generation Fund	1,897,985
111500 · Self Insured Risk Fund FNBA	7,989,822
Total 111000 · Ops/Capital/Insurance Funds	<u>25,229,567</u>

112000 · Trustee Funds

112100 · WF Trust 2009 Bond Interest	92,290
112200 · WF Trust 2009 Bond Principal	558,790
112300 · WF Trust 2009 Bond Reserve	1,410,133
112501 · WF Trust 2015 Bond Interest	81,281
112503 · WF Trust 2015 Bond Reserve	212,805
Total 112000 · Trustee Funds	<u>2,355,300</u>

113000 · Other Restricted Funds

113100 · STI - USFS CD WF	21,622
113500 · DNR Reclamation Fund WF	852,265
Total 113000 · Other Restricted Funds	<u>873,887</u>

Total Agency Funds 28,458,754

Accounts Receivable

110000 · Accounts Receivable	2,704,677
110100 · Grants Receivable	111,571
Total Accounts Receivable	<u>2,816,249</u>

Other Current Assets

120000 · Other Current Assets	
120200 · Other Receivables	4,606
120300 · Accrued Interest Receivable	43,385
120500 · Prepaid Fees	
120520 · Prepaid Insurance	237,431
120530 · Prepaid Operating Expense	13,334
120540 · Prepaid USDA FS Land Use Fees	89,087
120550 · Prepaid Admin Benefits	30,587
Total 120500 · Prepaid Fees	<u>370,439</u>

120700 · Inventory Assets

120701 · Inventory - Wood Poles	8,143
120702 · Inventory - Marker Balls	54,404
1207031 · Inventory-SWL Winding Replacmnt	890,405
Total 120700 · Inventory Assets	<u>952,952</u>

Total 120000 · Other Current Assets 1,371,382

Total Other Current Assets 1,371,382

Total Current Assets 32,646,385

SOUTHEAST ALASKA POWER AGENCY
Statement of Financial Position - Detail
As of January 31, 2016

Fixed Assets	
130000 · Fixed Assets	
130100 · Capital Assets	
130110 · Swan Lake	16,428,278
130120 · Tye Lake	27,566,918
130130 · SEAPA Office	733,897
132100 · Swan Tye Intertie in Operation	111,578,874
Total 130100 · Capital Assets	<u>156,307,967</u>
132200 · R&R Projects WIP Capital Improv	
132210 · R&R Projects - WIP Swan Lake	
1322100 · R&R WIP SWL- Reservoir Increase	
1322101 · WIP SWL Agency Permits/Environm	746,791
1322103 · WIP SWL Equipment	2,261
1322104 · WIP SWL Engineering/Design	1,060,433
1322105 · WIP SWL Legal	55,992
1322106 · WIP SWL Project Mgmt/Professnal	178,308
Total 1322100 · R&R WIP SWL- Reservoir Increase	<u>2,043,784</u>
132210 · R&R Projects - WIP Swan Lake - Other	<u>1,642,643</u>
Total 132210 · R&R Projects - WIP Swan Lake	3,686,427
132220 · R&R Projects - WIP Tye Lake	2,001,765
132230 · R&R Projects - WIP STI-Transmsn	2,117,363
132240 · R&R Projects - WIP SEAPA Office	94,689
Total 132200 · R&R Projects WIP Capital Improv	<u>7,900,245</u>
132900 · Accumulated Depreciation	<u>(34,123,793)</u>
Total 130000 · Fixed Assets	<u>130,084,419</u>
Total Fixed Assets	<u>130,084,419</u>
Other Assets	
183000 · Deferred Assets	
183001 · Long Term Receivable	242,499
183003 · 2009 Bond - Refunded Discount	156,210
183300 · Meterological Tower	4,064
Total 183000 · Deferred Assets	<u>402,773</u>
Total Other Assets	<u>402,773</u>
TOTAL ASSETS	<u><u>163,133,577</u></u>

SOUTHEAST ALASKA POWER AGENCY
Statement of Financial Position - Detail
As of January 31, 2016

LIABILITIES & EQUITY

Liabilities

Current Liabilities

Accounts Payable

210100 · Accounts Payable General 455,098

Total Accounts Payable 455,098

Other Current Liabilities

210150 · Other Current Liabilities

210152 · DNR Fund - CVEA KEA Portion 262,500

210150 · Other Current Liabilities - Other 46,568

Total 210150 · Other Current Liabilities 309,068

210300 · Reserve Interest Payable 130,344

210400 · Wages Payable 164,706

210500 · Payroll Liabilities

210522 · SUI Tax Payable 1,683

210531 · IBEW H&W Payable 5,145

210540 · 457(b) Payable 1,217

210541 · IBEW Pension Payable 3,044

210550 · IBEW Dues Payable 732

Total 210500 · Payroll Liabilities 11,822

Total Other Current Liabilities 615,940

Total Current Liabilities 1,071,037

Long Term Liabilities

220000 · Long Term Liabilities

220100 · Series B Bonds 2009 7,905,000

220120 · 2009 Bond Issuance Discount (33,646)

220121 · PERS Unfunded Liability WRG 488,768

220130 · Series 2015 Bonds 10,295,000

220131 · 2015 Bond Issuance Premium 956,012

Total 220000 · Long Term Liabilities 19,611,134

Total Long Term Liabilities 19,611,134

Total Liabilities 20,682,171

Net Position

310000 · Net Position

3100001 · Net Investment Capital Assets 109,374,861

3100002 · Restricted for Debt Service 1,622,843

3100003 · Restricted by External Agreement 873,886

3100004 · Unrestricted 29,007,796

Total 310000 · Net Position 140,879,386

Net Income 1,572,019

Total Net Position 142,451,405

TOTAL LIABILITIES & NET POSITION 163,133,577

SOUTHEAST ALASKA POWER AGENCY
Statement of Activities - Budget Comparison Detail
 January 2016

	JAN 2016	Budget	Jul'15-Jan '16	YTD Budget	Annual Budget
Operating Income/Expense					
Operating Income					
410000 · Hydro Facility Revenues					
410100 · Ketchikan Power Purchases	724,693	614,298	3,713,298	3,937,181	6,415,704
410200 · Petersburg Power Purchases	286,107	275,128	1,763,923	1,796,990	2,841,746
410300 · Wrangell Power Purchases	244,258	266,574	1,544,864	1,521,428	2,472,550
412100 · Displaced Power Sales Ketchikan	-	-	338,152	-	-
Total 410000 · Hydro Facility Revenues	1,255,057	1,156,000	7,360,237	7,255,599	11,730,000
Total Operating Income	1,255,057	1,156,000	7,360,237	7,255,599	11,730,000
Operating Expense					
535000 · Hydro Ops-Suprvsn & Engineering					
535100 · Hyd/Ops Sup & Eng - Swan Lake	775	2,400	12,130	16,200	28,480
535150 · Hyd/Ops Sup & Eng - SWL SEAPA	110	110	7,856	9,800	10,350
535250 · Hyd/Ops Sup & Eng -TYL SEAPA	-	-	82,086	82,000	84,000
535400 · Hyd/Op Sup & Eng - Proj Drawing	-	10,000	17,151	46,750	96,750
Total 535000 · Hydro Ops-Suprvsn & Engineering	885	12,510	119,223	154,750	219,580
537000 · Hydraulic Expenses					
537150 · Hydraulic Expense - SWL SEAPA	-	-	-	-	4,000
537250 · Hydraulic Expense - TYL SEAPA	-	-	-	-	4,000
Total 537000 · Hydraulic Expenses	-	-	-	-	8,000
538000 · Electric Expenses					
538100 · Electric Expense - Swan Lake	351	2,000	8,403	14,000	24,500
538150 · Electric Expense - SWL SEAPA	-	9,000	31,435	47,000	89,200
538200 · Electric Expense - Tye Lake	3,851	1,500	17,532	10,500	18,000
538250 · Electric Expense - TYL SEAPA	-	5,500	870	37,500	65,000
Total 538000 · Electric Expenses	4,201	18,000	58,240	109,000	196,700
539000 · Misc Power Generation Expense					
539100 · Misc Exp - Swan Lake	7,533	8,000	67,156	56,000	96,690
539150 · Misc Expense - SWL SEAPA	4,220	7,000	40,284	47,000	82,000
539200 · Misc Expense - Tye Lake	6,033	8,000	60,113	55,000	97,000
539250 · Misc Expense - TYL SEAPA	7,085	17,000	87,065	117,858	202,858
Total 539000 · Misc Power Generation Expense	24,870	40,000	254,617	275,858	478,548
540000 · Rents					
540300 · FERC Land Use Fee - Swan Lake	1,090	1,050	7,033	7,250	12,500
540400 · FERC Land Use Fee - Tye Lake	3,470	3,440	23,651	23,800	41,000
540500 · USDA Land Use Fee - USFS ROW	1,956	1,730	11,557	12,100	20,750
540600 · USDA Land Use Fee - STI	5,990	5,000	35,399	35,000	60,000
540700 · USDA Tye Passive Reflector	108	125	752	875	1,500
540710 · USDA Etolin Burnett Radio	45	50	317	375	625
Total 540000 · Rents	12,659	11,395	78,709	79,400	136,375
541000 · Hydro Power Station Maintenance					
541100 · Maintenance - Swan Lake	-	1,500	8,174	12,000	20,500
541150 · Maintenance - SWL SEAPA	7,383	2,500	16,187	19,000	32,500
541200 · Maintenance - Tye Lake	2,977	1,500	9,740	10,000	19,000
541250 · Maintenance - TYL SEAPA	-	5,000	2,221	34,500	59,500
Total 541000 · Hydro Power Station Maintenance	10,360	10,500	36,322	75,500	131,500
543000 · Dams, Reservoirs & Waterways					
543150 · Dams Res & Waterwys - SWL SEAPA	-	-	23,126	23,000	25,000
543200 · Dams Res & Waterwys - Tye Lake	-	-	317	4,000	6,500
543250 · Dams Res & Waterwys - TYL SEAPA	-	-	25,782	37,000	49,700
Total 543000 · Dams, Reservoirs & Waterways	-	-	49,225	64,000	81,200

SOUTHEAST ALASKA POWER AGENCY
Statement of Activities - Budget Comparison Detail
January 2016

	JAN 2016	Budget	Jul'15-Jan '16	YTD Budget	Annual Budget
544000 · Maintenance of Electric Plant					
544100 · Maint Electric Plant-Swan Lake	49,190	45,000	348,196	340,000	589,715
5442900 · TYL Plant Wages & Benefits					
5442911 · TYL Plant Wages/PTO	31,967	30,000	212,503	205,000	374,000
5442912 · TYL Plant Wages OT	1,177	1,000	13,970	9,750	35,000
5442920 · TYL Plant Benefit - Taxes	2,979	2,650	15,825	18,450	33,300
5442930 · TYL Plant Benefits - Insurance	6,718	5,500	43,667	38,700	69,000
5442940 · TYL Plant Benefits - Retirement	4,258	4,400	26,857	30,000	54,700
5442992 · TYL Plant Grant-Capital Payroll	-	-	(4,839)	-	-
Total 5442900 · TYL Plant Wages & Benefits	47,099	43,550	307,984	301,900	566,000
Total 544000 · Maintenance of Electric Plant	96,289	88,550	656,180	641,900	1,155,715
545000 · Plant Miscellaneous Maintenance					
545100 · Plant Misc Maint - Swan Lake	1,161	2,000	18,960	14,000	29,500
545150 · Plant Misc Maint - SWL SEAPA	-	-	6,890	10,000	20,000
545200 · Plant Misc Maint - Tye Lake	2,384	1,500	10,704	13,500	24,500
Total 545000 · Plant Miscellaneous Maintenance	3,545	3,500	36,554	37,500	74,000
561000 · Control System Maintenance					
561150 · Control System Maint. - SWL	763	750	17,898	3,750	7,500
561250 · Control System Maint. - TYL	3,681	750	20,972	3,750	7,500
Total 561000 · Control System Maintenance	4,444	1,500	38,870	7,500	15,000
562000 · Trans/Operations Station Exp					
562100 · Trans/Ops Station - Swan Lake	-	500	-	3,500	15,000
562200 · Trans/Ops Station - Tye Lake	24	1,200	3,864	7,700	14,200
562250 · Trans/Ops Station-TYL SEAPA	4,623	7,500	11,365	45,000	156,500
Total 562000 · Trans/Operations Station Exp	4,647	9,200	15,229	56,200	185,700
564000 · Trans/Submarine Cable Expense					
564200 · Trans/Sub Cable Exp - Tye Lake	-	-	-	-	2,000
Total 564000 · Trans/Submarine Cable Expense	-	-	-	-	2,000
571000 · Trans/Maint Overhead Lines(OHL)					
571100 · Trans/Maint OHL - Swan Lake	8,439	3,000	11,599	23,000	50,000
571150 · Trans/Maint OHL - SWL SEAPA	-	1,000	6,995	21,500	198,630
571151 · Trans/Maint OHL - SWL ROW Clear	-	-	203,444	250,000	250,000
571200 · Trans/Maint OHL - Tye Lake	419	1,000	34,435	28,000	54,250
571250 · Trans/Maint OHL - TYL SEAPA	-	5,000	21,101	35,000	298,880
5712900 · TYL Brushing Wages & Benefits					
5712911 · TYL Brushing Wages/PTO	8,107	11,000	74,241	74,000	137,000
5712912 · TYL Brushing Wages OT	-	-	2,283	4,000	13,000
5712920 · TYL Brushing Benefit - Taxes	966	1,000	5,504	6,750	13,100
5712930 · TYL Brushing Benefit- Insurance	3,359	2,500	21,834	17,750	34,200
5712940 · TYL Brushing Benefit- Retirement	1,936	2,000	12,865	13,500	26,700
5712992 · TYL Brush Grant-Capital Payroll	-	-	(9,758)	-	-
Total 5712900 · TYL Brushing Wages & Benefits	14,368	16,500	106,968	116,000	224,000
571300 · Trans/Maint OHL STI Maintenance	-	-	350	34,500	314,150
571500 · Trans/Maint OHL STI Therml Scan	-	-	2,113	2,000	2,000
571800 · Trans/Maint OHL System Events	-	10,000	-	50,000	100,000
Total 571000 · Trans/Maint Overhead Lines(OHL)	23,225	36,500	387,005	560,000	1,491,910

SOUTHEAST ALASKA POWER AGENCY
Statement of Activities - Budget Comparison Detail
January 2016

	JAN 2016	Budget	Jul'15-Jan '16	YTD Budget	Annual Budget
920000 · Admin Wages & Benefits					
9201911 · Admin Wages/PTO	63,129	72,000	454,570	470,000	866,500
9201912 · Admin Wages - Overtime	-	140	218	800	1,500
9201920 · Admin Benefit - Taxes	6,229	5,000	29,001	34,800	61,000
9201930 · Admin Benefit - H&W Insurance	16,960	17,000	102,959	103,000	195,000
9201940 · Admin Benefit - Retirement	22,526	25,000	138,425	145,100	289,000
9201992 · Admin Grant Payroll	(110)		(1,118)		
Total 920000 · Admin Wages & Benefits	108,733	119,140	724,055	753,700	1,413,000
921000 · Office Expenses					
921100 · Office Supplies	986	1,250	10,323	8,750	15,000
921200 · Office Equipment	525	2,000	64,121	61,100	72,100
921300 · Phone, Courier, Internet	6,606	7,400	49,098	51,800	88,960
921400 · System Network / IT Support	2,823	4,000	26,674	28,000	48,000
921600 · Vehicle Expenses	362	300	1,052	2,000	3,500
Total 921000 · Office Expenses	11,302	14,950	151,269	151,650	227,560
922000 · Legislative Affairs	4,000	5,000	28,370	35,000	65,000
923000 · Contract Services					
923200 · Annual Financial Audit	-	-	31,530	29,500	29,500
923300 · Bank & Trustee Fees	5,257	5,250	6,945	7,000	16,150
923400 · Insurance Consultant	731	1,000	5,726	3,500	7,500
923500 · Investment Consultant	1,667	2,000	11,632	17,000	27,000
923600 · Legal Fees	4,091	15,000	85,889	105,000	180,000
923700 · Recruitment	-	2,000	-	12,000	22,000
923800 · Other Professional Services	3,442	18,000	26,949	105,000	203,000
Total 923000 · Contract Services	15,188	43,250	168,671	279,000	485,150
924000 · Insurance	39,572	46,800	279,268	322,900	556,900
926000 · Retiree Benefits					
926250 · Retiree Benefits TYL-PERS	-	-	-	40,000	40,000
Total 926000 · Retiree Benefits	-	-	-	40,000	40,000
928000 · Regulatory Commission Expense					
928001 · Other Regulatory Expense	10	4,000	81	24,000	39,650
928150 · FERC SWL Admin Fees	3,742	3,000	21,290	24,000	40,000
928151 · FERC SWL Other Expenses	-	2,000	4,962	15,000	25,700
928250 · FERC TYL Admin Fees	3,340	3,000	20,298	21,000	37,000
928251 · FERC TYL Other Expenses	-	300	1,461	2,100	3,800
Total 928000 · Regulatory Commission Expense	7,092	12,300	48,092	86,100	146,150
930000 · General Expenses					
930100 · Advertising Expense	49	400	1,031	2,950	5,000
930110 · Public Relations	350	2,000	14,002	16,500	27,500
930111 · PR - SEAPA History Project	-	1,500	-	6,500	15,000
930300 · Association Dues Expense	29,223	8,800	31,003	30,630	32,330
930310 · Professional Assn Dues	-	-	404	300	750
930400 · Board Meeting Expenses	558	4,000	9,749	26,000	45,000
930500 · Training Expense	1,232	2,500	10,747	15,500	28,700
930600 · Travel Expense	1,547	4,000	11,688	26,000	43,000
930700 · Non-Travel Incidental	100	250	2,455	1,750	3,000
Total 930000 · General Expenses	33,058	23,450	81,079	126,130	200,280
931000 · Admin Rent					
931010 · Office Rent	5,401	5,400	33,830	32,560	59,560
931100 · Apartment Rent - Ketchikan	1,750	1,950	12,330	13,650	23,400
Total 931000 · Admin Rent	7,151	7,350	46,160	46,210	82,960
Total Operating Expense	411,222	503,895	3,257,137	3,902,298	7,393,228
Net Operating Income	843,835	652,105	4,103,100	3,353,301	4,336,772

SOUTHEAST ALASKA POWER AGENCY
Statement of Activities - Budget Comparison Detail
 January 2016

	JAN 2016	Budget	Jul'15-Jan '16	YTD Budget	Annual Budget
Nonoperating Income/Expense					
Nonoperating Income					
941000 · Grant Income	82,680		589,503		
942000 · Interest Income					
942100 · Misc Interest Income	894		6,911		
942200 · Investment Interest Income	15,943		88,291		
Total 942000 · Interest Income	16,837		95,202		
944000 · Realized Gain/Loss					
944200 · Realized Gain/Loss on Invest	(2,813)		(45,227)		
Total 944000 · Realized Gain/Loss	(2,813)		(45,227)		
945000 · Unrealized Gain/Loss					
945200 · Unrealized Gain/Loss Investment	37,131		(14,100)		
Total 945000 · Unrealized Gain/Loss	37,131		(14,100)		
946000 · Misc Nonoperating Income					
946002 · Gain/Loss on Property Dispositn	-		4,108		
Total 946000 · Misc Nonoperating Income	-		4,108		
Total Nonoperating Income	133,836		629,487		
Nonoperating Expense					
950002 · Special Item- Tye Op Transitr	-		-		
950004 · Abandoned Feasibility Expense	-		71,785		
952000 · Bond Interest 2009 Series	30,684		214,790		
952001 · Bond Interest 2015 Series	35,635		277,663		
953000 · Depreciation Expense	339,212		2,374,482		
954000 · Grant Expenses					
954002 · Grant Contractual	136,007		689,506		
954004 · Grant Labor & Benefits	110		5,251		
954005 · Grant Legal	14,840		32,527		
954006 · Grant Materials & Supplies	-		74		
954007 · Grant Other Expense	347		7,870		
954008 · Grant Travel	-		28,568		
Total 954000 · Grant Expenses	151,305		763,796		
954100 · Contributed Capital	(142,254)		(551,470)		
955000 · Interest Expense					
955200 · Investment Interest Expense	-		9,521		
Total 955000 · Interest Expense	-		9,521		
Total Nonoperating Expense	414,582		3,160,568		
Net Nonoperating Income	(280,746)		(2,531,081)		
Net Income	563,089	652,105	1,572,019	3,353,301	4,336,772

Southeast Alaska Power Agency R&R PROJECTS	FY2016		WIP CAPITAL PROJECTS 2/29/2016	ANNUAL EXPENDITURES					Overall BUDGET
	Budget	Expenditures		FY12	FY13	FY14	FY15	TOTAL	
242-13 Reservoir Expansion SWL Grant Funding Construction Fund	\$ 3,697,143 \$ (2,991,308) \$ (6,000,000)	637,228 (744,378) -	Construction contract conformance underway.	151,421	421,782 (6,392)	394,811 (245,260)	525,020 (513,931)	2,130,262 (1,509,962) -	10,000,000 (3,898,000) (6,102,000)
220-12 SCADA Upgrade	\$ 110,125	70,046	Integration complete in FY16.	130,663	156,453	880,036	88,276	1,325,473	1,347,209
228-13 Circuit Switcher WRG	\$ 65,783	82,657	COMPLETE DEC 2015		-	-	104,217	186,874	170,000
231-13 Helicopter Pads	\$ 2,713,260	1,557,224	50 of 105 installed; re-move May.		57,731	98,391	533,783	2,247,129	3,403,165
232-13 Communications Upgrade	\$ 301,801	120,859	Completion pending weather.		12,160	184,771	17,744	335,534	520,100
236-13 Wrangell Reactor	\$ 223,003	214,552	COMPLETE DEC 2015		55,066	216,832	446,532	932,983	939,000
240-13 Cooling Water TYL	\$ 105,534	62,024	Site work Apr 2016.		26,600	67,566	1,250	157,439	199,700
241-13 Stream Gauge TYL	\$ 844,525	46,275	Staged; pending weather.		37,845	562,635	22,753	669,508	1,467,758
248-14 Lathe TYL	\$ 42,000	-	Order placed Mar; delivery May.			16,593	(16,823)	-	42,000
249-14 Marine Term Gage/CommTYL	\$ 148,498	66,334	Radios being manufactured (Mar).			-	126,111	192,445	245,000
251-14 Powerhs Roof Repair SWL	\$ 419,200	430,155	COMPLETE SEP 2015			913	6,012	437,080	425,000
252-14 Submarine SpliceSpareTYL	\$ 213,000	-	Degassifier being evaluated.			-	-	-	213,000
255-14 Wood Helipad Repair SWL	\$ 103,489	95,871	COMPLETE AUG 2015				633	96,504	104,000
256-15 Alarm Trip Protectn SWL-TYL	\$ 221,500	49,495	Underway; complete summer 2016				611	50,107	222,000
257-15 Pressure-Reducing Valve TYL	\$ 71,000	11,070	Coordinated with RR240-13.				-	11,070	71,000
258-15 System Control Improve SWL-TYL	\$ 88,200	39,787	Project underway.				28,766	68,553	116,800
259-15 Turbine Shutoff Valves TYL	\$ 209,976	97,124	Partially installed.				84,857	181,981	274,500
260-15 Exciters SWL	\$ 797,500	371,043	Exciters on site.				10,104	381,147	799,000
261-15 Generator Switch Gear SWL	\$ 881,000	1,958	Equipment delivery Mar 2016.				9,773	11,730	882,000
262-16 Manlifts SWL-TYL	\$ 130,000	133,482	COMPLETE JAN 2016					133,482	130,000
263-16 CTs-Relay CircSwitcr WRG	\$ 201,000	4,884	Preparing for bid.					4,884	201,000
264-16 Cooling System TGB SWL	\$ 130,000	93,489	Commissioned MAR 2016.					93,489	130,000
265-16 Marker Balls OHL TYL	\$ 600,596	-	Spring 2016					-	600,596
266-16 Pickup KTN	\$ 38,275	37,531	COMPLETE DEC 2015					37,531	38,275
267-16 Roof-Siding Housing TYL	\$ 120,770	-	Contract award Apr board mtg.					-	120,770
268-16 Vehicle SWL	\$ 20,000	-	Pending vehicle inspection					-	20,000
269-16 Guy Thimbles STI	\$ 204,000	-	'16 spring maintenance shutdown.					-	204,000
270-16 Dampeners OHL TYL	\$ 99,900	-	'16 spring maintenance shutdown.					-	99,900
271-16 Substation Upgrade WRG	\$ 45,025	-	<i>Project approved Feb 2016.</i>						45,025
Total WIP R&R Capital Projects	\$9,148,960	\$3,585,860		\$130,663	\$345,854	\$2,027,736	\$1,464,600	\$7,554,943	\$13,030,798
Totals INCLUDING 242-13 SWL	\$ 12,846,103	\$4,223,088		\$282,084	\$767,636	\$2,422,547	\$1,989,620	\$9,685,204	\$23,030,798

Date	Num	Vendor	FY16 BUDGET \$	Expenditures	Description
220-12 SCADA Upgrade			\$110,125	-	SEAPA-System Supervisory Control and Data Acquisition (SCADA) Consolidation Project. Installed and operational.
	\$ 156,453	<i>FY13 Expenditures</i>			
	\$ 881,204	<i>FY14 Expenditures</i>			Project completion scheduled for FY2016 as system is
	\$ (674,780)	<i>FY14 TYL Portion Capitalized</i>			integrated with other R&R projects (Alarm Control
	\$ 88,276	<i>FY15 Expenditures</i>			Protection). (E.Wolfe)
07/30/15	XJR5PJF36	Dell		1,810	
08/10/15	17054	TexRus		354	FY14 CAPITALIZED TYL Portion of Project \$674K
08/18/15	230961	Best Western Landing Hotel		160	
08/18/15	230960	Best Western Landing Hotel		160	
08/18/15	52392	Sunrise Aviation Inc		890	
08/21/15	52397	Sunrise Aviation Inc		578	
08/23/15	231295	Best Western Landing Hotel		477	
08/23/15	231296	Best Western Landing Hotel		280	
08/27/15	XJRJMDDD4	Dell		3,446	
08/31/15	15060	Segrity LLC		8,352	
08/31/15	15060	Segrity LLC		9,902	
08/31/15	15060	Segrity LLC		8,940	
08/31/15	WOL0389-201508	"Bank of America		58	
10/06/15	15065	Segrity LLC		1,301	
10/06/15	15065	Segrity LLC		1,301	
10/06/15	15065	Segrity LLC		1,301	
10/23/15	15077	Segrity LLC		968	
10/23/15	15077	Segrity LLC		968	
10/23/15	15077	Segrity LLC		968	
11/10/15	234447	Best Western Landing Hotel		142	
11/11/15	234501	Best Western Landing Hotel		142	
11/11/15	32162	Taquan Air		234	
11/13/15	234605	Best Western Landing Hotel		149	
11/19/15	52468	Sunrise Aviation Inc		470	
11/24/15	15083	Segrity LLC		646	
11/24/15	15083	Segrity LLC		646	
11/24/15	15083	Segrity LLC		645	
11/24/15	15084	Segrity LLC		3,291	
11/24/15	15084	Segrity LLC		3,291	
11/24/15	15084	Segrity LLC		3,293	
11/24/15	15085	Segrity LLC		1,125	
11/24/15	15086	Segrity LLC		12,834	
11/30/15	THO9358-201511	"Bank of America		86	
11/30/15	WOL0389-201511	"Bank of America		70	
12/18/15	17770	TexRus		768	
	\$ 70,046	<i>FY16 Expenditures</i>			
Total 220-12 SCADA Upgrade				650,874	
228-13 Circuit Switcher WRG			\$65,783	-	Replacement of manual 3-phase circuit switcher at the
	\$ 104,217	<i>FY15 Expenditures</i>			Wrangell switchyard. Delivered to WRG switchyard October
08/12/15	7221	Electric Power Constructors		545	2014. Installation completed in SEP 2015. (S.Henson)
09/26/15	377291	Ottesen's Inc		114	
09/30/15	15068	Segrity LLC		870	
09/30/15	91376R	Southern States LLC		11,000	
10/22/15	7878	Electric Power Constructors		62,256	
11/04/15	7917	Electric Power Constructors		7,872	
	\$ 82,657	<i>FY16 Expenditures</i>			
Total 228-13 Circuit Switcher Wrg				186,874	

Date	Num	Vendor	FY16 BUDGET \$	Expenditures	Description
231-13 Helicopter Pads			\$2,713,260	-	Helipad installation on the intertie and replacement of pads on Swan and Tyee lines. Prototype installed on the STI in November 2013. PND's helipad design approved by USFS in Dec 2014. Touchdown Enterprises helipad manufacturing to be completed in June; installation began summer of 2015 (50 of 105 helipads installed) and scheduled for completion in CY2016.
	\$ 57,731	<i>FY13 Expenditures</i>			
	\$ 98,391	<i>FY14 Expenditures</i>			
	\$ (114,921)	<i>FY14 Capitalize Prototypes</i>			
	\$ 533,783	<i>FY15 Expenditures</i>			
07/01/15	WCI201507	Ward Cove Industries LLC		1,125	
07/14/15	PMT#3	Touchdown Enterprises		145,688	
07/21/15	29126	Temsco Helicopters, Inc.		6,204	
07/24/15	1540	Ward Cove Industries LLC		1,380	Project Mgmt: Tongass Engineering (S.Henson)
07/29/15	35680602	McMaster-Carr		797	Manufacturing: Touchdown Enterprises
08/01/15	WCI201508	Ward Cove Industries LLC		1,125	Installation: BAM LLC
08/03/15	31335	Taquan Air		467	FY14 CAPITALIZED \$114,921 (Prototypes)
08/05/15	Final Pmt	Touchdown Enterprises		145,688	
08/14/15	TO15111-1	BAM LLC		297,000	
08/18/15	1562	Ward Cove Industries LLC		95	
09/01/15	WCI201509	Ward Cove Industries LLC		1,125	
09/01/15	31721	Taquan Air		556	
09/03/15	31737	Taquan Air		556	
09/10/15	TO15111-2	BAM LLC		427,895	
09/14/15	1320127	Tongass Engineering		25,469	
09/15/15	31917	Taquan Air		695	
09/17/15	29469	Temsco Helicopters, Inc.		1,024	
09/22/15	31918	Taquan Air		1,390	
10/01/15	WCI201510	Ward Cove Industries LLC		1,125	
10/05/15	31994	Taquan Air		685	
10/06/15	29531	Temsco Helicopters, Inc.		2,999	
11/01/15	WCI201511	Ward Cove Industries LLC		1,125	
12/01/15	WCI201512	Ward Cove Industries LLC		1,125	
12/23/15	TO15111-3	BAM LLC		453,874	
12/31/15	1320128	Tongass Engineering		35,763	
01/01/16	WCI201601	Ward Cove Industries LLC		1,125	
02/01/16	WCI201602	Ward Cove Industries LLC		1,125	
	\$ 1,557,224	<i>FY16 Expenditures</i>			
Total 231-13 Helicopter Pads				2,132,209	

Date	Num	Vendor	FY16 BUDGET \$	Expenditures	Description
232-13 Communications Upgrade			\$301,801	-	Satellite dishes and telephone systems installed at Swan Lake and SEAPA Office in December 2013. Tye Lake satellite dish permitting approved by ADF&G and Corp of Engineers; DNR approval received Sep 2015. Platform built by Tye crew, materials delivered, underground conduit installed. ROIP (Radio Over Internet Protocol) testing completed successfully. (S.Henson)
	\$ 12,160	<i>FY13 Expenditures</i>			
	\$ (177,163)	<i>FY14 Capitalize SWL-SEA Office</i>			
	\$ 17,744	<i>FY15 Expenditures</i>			
07/20/15	AKKET11012	Fastenal		577	
07/22/15	PO1618DWNPMT	Vertex Structures, Inc.		2,349	
07/24/15	50943704	Tetra Tech Inc		135	
08/11/15	S144KET08I	Samson Tug & Barge		76	
08/11/15	29254	Temsco Helicopters, Inc.		559	CAPITALIZED SWL-SEAPA Office \$177,163
08/15/15	29267	Temsco Helicopters, Inc.		2,184	
09/09/15	2762290	Span Alaska Transportation, LLC		1,330	
09/11/15	150911001	Vertex Structures, Inc.		5,482	
10/07/15	WRA150072	Samson Tug & Barge		320	
10/14/15	S6782454001	North Coast Electric Company		10,871	
10/14/15	S6782454002	North Coast Electric Company		2,995	
10/15/15	S164WRA09N	Samson Tug & Barge		500	
10/16/15	S165WRA19N	Samson Tug & Barge		743	
10/24/15	378485	Ottesen's Inc		26	
10/28/15	S678245003	North Coast Electric Company		764	
10/31/15	S678245004	North Coast Electric Company		613	
11/01/15	WRA150084	Samson Tug & Barge		225	
11/01/15	WRA150072C	Samson Tug & Barge		(80)	
11/04/15	1504	Stikine Transportation		806	
11/09/15	52462	Sunrise Aviation Inc		435	
11/24/15	K10182701	Tyler Rental, Inc.		3,278	
11/30/15	473	Tye Plant Payroll		6,752	
11/30/15	HEN0453-201511	"Bank of America		213	
12/01/15	71	Breakaway Adventures, LLC		720	
12/01/15	MK1510151	Futaris Inc		76,215	
12/11/15	44032	Tongass Engineering		500	
12/14/15	S178WRA01S	Samson Tug & Barge		496	
12/17/15	K10182702	Tyler Rental, Inc.		1,775	
	\$ 120,859	<i>FY16 Expenditures</i>			
Total 232-13 Communications Upgrade				<u>158,371</u>	

Southeast Alaska Power Agency

WORK-IN-PROGRESS R&R Capital Projects as of Feb 29, 2016

Date	Num	Vendor	FY16 BUDGET \$	Expenditures	Description
236-13 Wrangell Reactor			\$223,003	-	Replace aging reactor in Wrangell with switchable reactors and capacitors. EPS - Project management and engineering design; ABB - Manufacturer; Norconsult - Factory Acceptance Testing; Installed Sep 2015. COMPLETE DEC 2015. (S.Henson)
	\$ 55,066	<i>FY13 Expenditures</i>			
	\$ 216,832	<i>FY14 Expenditures</i>			
	\$ 446,532	<i>FY15 Expenditures</i>			
07/03/15	90871605	ABB Inc.		44	
07/03/15	90871604	ABB Inc.		5,001	
07/16/15	7036	Electric Power Systems Inc.		117	
07/27/15	D06768170	DHL Express		36	
08/12/15	7221	Electric Power Constructors		2,179	
09/15/15	7487	Electric Power Systems Inc.		288	
09/22/15	421675	Sentry Hardware & Marine		6	
09/22/15	377084	Ottesen's Inc		14	
09/30/15	15068	Segrity LLC		4,568	
09/30/15	7758	Electric Power Systems Inc.		9,212	
10/06/15	44490	Johnson's Building Supply		750	
10/09/15	3622	Stikine Inn		453	
10/12/15	7742	Electric Power Constructors		5,650	
10/18/15	15030093	NK Electric, Inc.		401	
10/22/15	7878	Electric Power Constructors		153,280	
10/31/15	7904	Electric Power Constructors		5,650	
11/04/15	7917	Electric Power Constructors		16,238	
11/30/15	52456	Sunrise Aviation Inc		435	
12/21/15	8405	Electric Power Systems Inc.		10,232	
	\$ 214,552	<i>FY16 Expenditures</i>			
Total 236-13 Wrangell Reactors				<u>932,983</u>	
240-13 Cooling Water TYL			\$105,534	-	Piping installation complete. Valves and control work remain and will be coordinated with System Control Improvements (RR258-15). Completion scheduled for FY16. (E.Wolfe) CAPITALIZED PIPE INSTALLATION \$94,165
	\$ 26,600	<i>FY13 Expenditures</i>			
	\$ 67,566	<i>FY14 Expenditures</i>			
	\$ (94,165)	<i>FY14 Pipe Install Capitalized</i>			
	\$ 1,250	<i>FY15 Expenditures</i>			
07/01/15	417918	Sentry Hardware & Marine		136	
07/09/15	34195928	McMaster-Carr		655	
07/17/15	34799332	McMaster-Carr		63	
07/27/15	419124	Sentry Hardware & Marine		16	
08/31/15	15061	Segrity LLC		10,845	
09/16/15	82326	Channel Electric		851	
09/22/15	S156KET05I	Samson Tug & Barge		82	
09/29/15	15063	Segrity LLC		9,716	
10/02/15	15072	Segrity LLC		3,250	
10/06/15	15064	Segrity LLC		4,946	
10/13/15	15067	Segrity LLC		11,003	
10/21/15	41752720	McMaster-Carr		90	
10/23/15	S167WRA16N	Samson Tug & Barge		64	
10/31/15	15074	Segrity LLC		2,798	
10/31/15	15079	Segrity LLC		7,746	
11/22/15	52470	Sunrise Aviation Inc		218	
11/24/15	15086	Segrity LLC		6,397	
11/30/15	473	Tyee Plant Payroll		3,148	
	\$ 62,024	<i>FY16 Expenditures</i>			
Total 240-13 Cooling Water TYL				<u>63,273</u>	

Southeast Alaska Power Agency

WORK-IN-PROGRESS R&R Capital Projects as of Feb 29, 2016

Date	Num	Vendor	FY16 BUDGET \$	Expenditures	Description
241-13 Stream Gauge TYL			\$844,525	-	Logs cleared July 2013. Weir construction completed and helipad place by Sep 2013. Grout work will be performed as conditions allow (BAM). (E.Schofield)
	\$ 37,845	<i>FY13 Expenditures</i>			
	\$ 562,635	<i>FY14 Expenditures</i>			
	\$ (598,332)	<i>FY14 Weir & Helipad Capitalized</i>			
	\$ 22,753	<i>FY15 Expenditures</i>			FY14 CAPITALIZED WEIR & HELIPAD \$598,332
07/21/15	29127	Temco Helicopters, Inc.		1,445	
07/22/15	PO1618DWNPMT	Vertex Structures, Inc.		5,419	
08/04/15	T2079301	Tyler Industrial Supply		131	
08/04/15	15812	Foam Concepts LLC		5,825	
08/12/15	S146WRA21N	Samson Tug & Barge		238	
09/09/15	2762290	Span Alaska Transportation, LLC		1,330	
09/11/15	150911001	Vertex Structures, Inc.		12,643	
10/07/15	WRA150072	Samson Tug & Barge		320	
11/01/15	WRA150084	Samson Tug & Barge		225	
11/01/15	WRA150072C	Samson Tug & Barge		(80)	
11/04/15	1504	Stikine Transportation		806	
12/01/15	MK1510152	Futaris Inc		17,973	
	\$ 46,275	<i>FY16 Expenditures</i>			
Total 241-13 Stream Gauge TYL				71,176	

Date	Num	Vendor	FY16 BUDGET \$	Expenditures	Description
242-13 Reservoir Expansion SWL			\$763,736		Refer to report from Director of Special Projects. (E.Wolfe / E.Schofield)
AK DCCED Grant >			(\$763,736)		
06/30/12	\$ 151,421	<i>FY12 Expenditures</i>			
	\$ 421,782	<i>FY13 Expenditures</i>			
	\$ 394,811	<i>FY14 Expenditures</i>		-	
	\$ 525,020	<i>FY15 Expenditures</i>			
07/31/15	MAD4548-201507	"Bank of America		425	
07/31/15	WOL7101-201507	"Bank of America		149	
07/31/15	1514	Ascent Law Partners LLP		2,940	
08/09/15	5206	McMillen LLC		53,613	
08/19/15	1428	Miscellaneous Cash		(7)	
08/19/15	31550	Taquan Air		1,667	
08/20/15	227076	Best Western Landing Hotel		320	
08/28/15	121715	Van Ness Feldman PC		5,610	
08/31/15	1576	Ascent Law Partners LLP		2,835	
08/31/15	MAD4548-201508	"Bank of America		171	
08/31/15	WOL0389-201508	"Bank of America		114	
08/31/15	KDR201508	de Rubertis, Kim		6,774	
08/31/15	122120	Van Ness Feldman PC		1,367	
09/06/15	5294	McMillen LLC		90,926	
09/09/15	201508165	Kleinschmidt Associates Inc.		4,947	
09/15/15	1509S	Glenn Brewer Consulting Engineer		7,206	
09/17/15	90542894	Hatch Associates Consultants, Inc		6,228	
09/18/15	3305048	Daily Journal of Commerce		95	
09/25/15	90544837	Hatch Associates Consultants, Inc		5,004	
09/25/15	50967286	Tetra Tech Inc		5,810	
09/25/15	201509136	Kleinschmidt Associates Inc.		3,502	
09/27/15	101372120	Alaska Dispatch News		87	
09/30/15	ACT2263-201509	"Bank of America		410	
09/30/15	1638	Ascent Law Partners LLP		455	
10/04/15	5386	McMillen LLC		51,660	
10/15/15	4	Kollgaard Eric		450	
10/23/15	50981339	Tetra Tech Inc		695	
10/28/15	31700	Ketchikan Daily News		76	
10/30/15	329983	Daily Journal of Commerce		79	
10/30/15	201510145	Kleinschmidt Associates Inc.		1,436	
10/31/15	MKC201510	Morris Kepler Consulting LLC		3,280	
10/31/15	WOL0389-201510	"Bank of America		72	
10/31/15	5460	McMillen LLC		61,058	
11/20/15	90552730	Hatch Associates Consultants, Inc		4,445	
11/27/15	201511144	Kleinschmidt Associates Inc.		1,311	
11/30/15	WOL201511	.Wolfe, Eric		30	
11/30/15	1714	Ascent Law Partners LLP		1,960	
11/30/15	MAD4548-201511	"Bank of America		480	
11/30/15	WOL0389-201511	"Bank of America		1,012	
12/01/15	50991051	Tetra Tech Inc		551	
12/01/15	5536	McMillen LLC		64,291	
12/08/15	461	PML Environmental		1,360	
12/16/15	603704	BDO USA LLP		1,800	
12/25/15	51004272	Tetra Tech Inc		257	
12/31/15	MKC201512	Morris Kepler Consulting LLC		1,148	
12/31/15	MKC201512	Morris Kepler Consulting LLC		3,367	
12/31/15	1512S	Glenn Brewer Consulting Engineer		400	
12/31/15	1512S2	Glenn Brewer Consulting Engineer		4,037	
12/31/15	1771	Ascent Law Partners LLP		2,520	
12/31/15	WOL0389-201512	"Bank of America		254	
12/31/15	14271801	R&M Engineering-Ketchikan		540	

Southeast Alaska Power Agency

WORK-IN-PROGRESS R&R Capital Projects as of Feb 29, 2016

Date	Num	Vendor	FY16 BUDGET \$	Expenditures	Description
01/01/16	BF100522T0033	USDA Forest Service		200	
01/05/16	201512120	Kleinschmidt Associates Inc.		2,066	
01/27/16	51010961	Tetra Tech Inc		354	
01/28/16	5619	McMillen LLC		28,800	
01/28/16	1601S2	Glenn Brewer Consulting Engineer		2,600	
01/28/16	32010	Ketchikan Daily News		147	
01/30/16	2205	Kuenz America Inc		46,267	
01/30/16	2205	Kuenz America Inc		46,260	
01/31/16	1803	Ascent Law Partners LLP		14,840	
02/01/16	3309273	Daily Journal of Commerce		112	
02/03/16	60667	Wrangell Sentinel		155	
02/07/16	5706	McMillen LLC		67,951	
02/08/16	201601249	Kleinschmidt Associates Inc.		2,852	
02/12/16	52530	Sunrise Aviation Inc		830	
02/12/16	324881	Taquan Air		467	
02/26/16	201602173	Kleinschmidt Associates Inc.		987	
02/28/16	1379527	Alaska Dispatch News		132	
02/29/16	1602S2	Glenn Brewer Consulting Engineer		10,300	
02/29/16	160229	Morris Publishing Group		436	
02/29/16	60767	Pilot Publishing, Inc.		189	
02/29/16	1846	Ascent Law Partners LLP		2,065	
	\$ 637,228	<i>FY16 Expenditures</i>			
Total 242-13 Reservoir Expansion SWL				<u>2,130,262</u>	
248-14 Lathe TYL			\$42,000		Vendor has been unresponsive; seeking delivery or refund.
06/30/14	\$ 16,823	<i>FY14 Expenditures</i>		-	Expenditures expensed, working with legal.
	\$ (16,823)	<i>FY15 Expenditures</i>		-	Lathe ordered from new vendor (Grizzly Industrial) Mar
	\$ -	<i>FY16 Expenditures</i>		-	2016; delivery May 2016. (Henson)
Total 248-14 Lathe TYL				<u>-</u>	

Southeast Alaska Power Agency

WORK-IN-PROGRESS R&R Capital Projects as of Feb 29, 2016

Date	Num	Vendor	FY16 BUDGET \$	Expenditures	Description
249-14 Marine Term Gage/Comm			\$148,498		Pressure transducers, replacement gauges and software design to integrate marine terminal data. Engineering complete, solar panels and all materials except data radios (expected in March) received. Installation dependent upon weather. (S.Henson)
	\$ 126,111	<i>FY15 Expenditures</i>			
07/21/15	AT10215	Automated Tool, Inc.		2,660	
07/24/15	15054	Segrity LLC		5,535	
07/29/15	59238	Struble Fluid Power		7,215	
07/31/15	15053	Segrity LLC		3,623	
08/10/15	374785	Ottesen's Inc		21	
08/10/15	419757	Sentry Hardware & Marine		31	
08/10/15	29251	Temasco Helicopters, Inc.		3,649	
08/11/15	59379	Struble Fluid Power		892	
08/11/15	29253	Temasco Helicopters, Inc.		3,648	
08/27/15	SHEH9DXNE9	Samson Tug & Barge		84	
08/31/15	15059	Segrity LLC		2,476	
08/31/15	N7578SURVY	Twin Eagle Consulting, LLC		11,650	
12/01/15	MK1510153	Futaris Inc		4,014	
12/31/15	N6578XET01	Twin Eagle Consulting, LLC		6,310	
12/31/15	16090	Segrity LLC		1,994	
01/31/16	16091	Segrity LLC		10,295	
02/09/16	16099	Segrity LLC		244	
02/29/16	16108	Segrity LLC		1,994	
	\$ 66,334	<i>FY16 Expenditures</i>			
Total 249-14 Marine Term Gage/Co				192,445	
251-14 Powerhs Roof Repair SWL			\$419,200		Powerhouse Roof Repair at SWL. COMPLETE SEP 2015. (S.Henson / E.Schofield)
04/28/14	201	May Engineering Services LLC		913	
06/03/14	202	May Engineering Services LLC		875	
06/27/14	203	May Engineering Services LLC		625	
07/30/14	204	May Engineering Services LLC		738	
08/31/14	205.	May Engineering Services LLC		713	
09/15/14	206	May Engineering Services LLC		250	
11/26/14	207	May Engineering Services LLC		1,015	
03/30/15	208	May Engineering Services LLC		673	
05/21/15	31043	Ketchikan Daily News		74	
06/04/15	30581	Taquan Air		935	
06/14/15	59121	Pilot Publishing, Inc.		64	
06/14/15	59114	Wrangell Sentinel		52	
08/31/15	CBC1	CBC Construction, Inc.		79,216	
08/31/15	31688	Taquan Air		935	
08/31/15	SCH3058-201508	"Bank of America		33	
09/04/15	88939	Pacific Airways Inc		700	
09/16/15	31915	Taquan Air		467	
09/24/15	31886	Taquan Air		935	
09/30/15	CBC2	CBC Construction, Inc.		347,869	
	\$ 430,155	<i>FY16 Expenditures</i>			
Total 251-14 Powerhs Roof Repair				437,080	
252-14 Submarine SpliceSpareTYL			\$213,000		Existing spares being evaluated to determine portions that require replacement following specifications recommended by Poseidon Engineering. (S.Henson)
	\$ -	<i>FY16 Expenditures</i>		-	
Total 252-14 Submarine Splice SpareTYL				-	

Southeast Alaska Power Agency

WORK-IN-PROGRESS R&R Capital Projects as of Feb 29, 2016

Date	Num	Vendor	FY16 BUDGET \$	Expenditures	Description
255-14 Wood Helipad Repair SWL			\$103,489		COMPLETE AUG 2015. (S.Henson)
	\$	633	<i>FY15 Expenditures</i>	-	
08/25/15	29344	Temsco Helicopters, Inc.		871	
08/26/15	8213	Alaska Clearing Inc		95,000	
	\$	95,871	<i>FY16 Expenditures</i>		
Total 255-14 Wood Helipad Repair SWL				96,504	
256-15 Alarm Trip Protection SWL			\$221,500		Two-year project; review sensors and relays, reliability and critical protection issue. Board awarded to Segrity (Mar 2015). Scheduled for completion summer of 2016. (E.Wolfe)
	\$	611	<i>FY15 Expenditures</i>		
07/02/15	CD10215980	Minco Products, Inc.		528	
07/31/15	15050	Segrity LLC		2,318	
07/31/15	15050	Segrity LLC		2,318	
07/31/15	WOL7101-201507	"Bank of America		40	
08/31/15	15061	Segrity LLC		610	
08/31/15	15061	Segrity LLC		610	
09/29/15	15062	Segrity LLC		7,019	
10/06/15	15066	Segrity LLC		2,444	
10/06/15	15066	Segrity LLC		2,444	
10/31/15	15078	Segrity LLC		5,663	
11/09/15	52461	Sunrise Aviation Inc		360	
11/14/15	52463	Sunrise Aviation Inc		218	
11/24/15	15086	Segrity LLC		645	
11/30/15	THO9358-201511	"Bank of America		86	
01/31/16	16094	Segrity LLC		1,645	
01/31/16	16094	Segrity LLC		4,025	
02/22/16	16097	Segrity LLC		606	
02/22/16	16097	Segrity LLC		606	
02/22/16	16098	Segrity LLC		2,257	
02/22/16	16098	Segrity LLC		2,257	
02/29/16	16103	Segrity LLC		1,553	
02/29/16	16103	Segrity LLC		5,265	
02/29/16	16104	Segrity LLC		3,817	
02/29/16	16105	Segrity LLC		1,083	
02/29/16	16105	Segrity LLC		1,083	
	\$	49,495	<i>FY16 Expenditures</i>		
Total 256-15 Alarm Trip Protection SWL-TYL				50,107	
257-15 Pressure-Reducing Valve T			\$71,000		System protection issue; affects camp and cooling water. Controls integrated with Cooling Water projects. Board awarded to Segrity (Mar 2015). (E.Wolfe)
10/31/15	15079	Segrity LLC		2,582	
11/24/15	15082	Segrity LLC		1,527	
11/24/15	15086	Segrity LLC		6,397	
11/30/15	473	Tyee Plant Payroll		563	
	\$	11,070	<i>FY16 Expenditures</i>		
Total 257-15 Pressure-Reducing Valve TYL				11,070	

Date	Num	Vendor	FY16 BUDGET \$	Expenditures	Description
258-15 System Control Improvem			\$88,200		Two-year project to increase reliability at both plants; coordinate facilities' operations. Board awarded to Segrity (Mar 2015). (E.Wolfe)
	\$ 28,766	<i>FY15 Expenditures</i>			
07/09/15	15049	Segrity LLC		5,513	
07/09/15	15049	Segrity LLC		5,513	
09/29/15	15063	Segrity LLC		9,716	
10/02/15	15072	Segrity LLC		3,250	
10/31/15	15074	Segrity LLC		2,798	
11/24/15	15086	Segrity LLC		6,236	
12/31/15	16089	Segrity LLC		924	
12/31/15	16089	Segrity LLC		924	
01/31/16	16093	Segrity LLC		450	
01/31/16	16093	Segrity LLC		450	
02/29/16	16102	Segrity LLC		2,007	
02/29/16	16102	Segrity LLC		2,007	
	\$ 39,787	<i>FY16 Expenditures</i>			
Total 258-15 System Control Improvements SWL-TYL				68,553	
259-15 Turbine Shutoff Valves TYI			\$209,976		Engineering review conducted by HDR, recommendations being implemented in FY16; partially installed; waiting for maintenance window to gain access. (E.Wolfe)
	\$ 84,857	<i>FY15 Expenditures</i>			
07/09/15	241637	Frontier Shipping & Copyworks		54	
07/10/15	5986	Vigor Alaska LLC		1,296	
07/10/15	5985	Vigor Alaska LLC		1,333	
07/28/15	455600-H	HDR Alaska Inc.		2,796	
08/17/15	635469	Wesco Distribution		3,327	
08/25/15	458875H	HDR Alaska Inc.		13,601	
09/30/15	WOL0389-201509	"Bank of America		111	
10/14/15	M800	Vigor Alaska LLC		144	
11/09/15	2015170	Andritz Hydro Corp		73,650	
11/09/15	52461	Sunrise Aviation Inc		360	
11/11/15	32162	Taquan Air		234	
11/14/15	52463	Sunrise Aviation Inc		218	
	\$ 97,124	<i>FY16 Expenditures</i>			
Total 259-15 Turbine Shutoff Valve TYL				181,981	
260-15 Exciters SWL			\$797,500		Replaces 1997 generators; coordinate with RR261-15. Equipment on site at Swan Lake. (E. Schofield)
	\$ 10,104	<i>FY15 Expenditures</i>		-	
08/20/15	2570592	Basler Electric Company		70,123	
09/23/15	2572802	Basler Electric Company		105,185	
12/03/15	2577877	Basler Electric Company		161,988	
12/04/15	2578036	Basler Electric Company		1,920	
12/07/15	2578119	Basler Electric Company		1,756	
01/01/16	2578997	Basler Electric Company		22,680	
01/21/16	27655	Alaska Marine Lines		480	
01/31/16	15176	Boyer Towing, Inc.		1,474	
02/01/16	16100	Segrity LLC		3,480	
02/29/16	16109	Segrity LLC		1,958	
	\$ 371,043	<i>FY16 Expenditures</i>			
Total 260-15 Exciters SWL				381,147	

Southeast Alaska Power Agency

WORK-IN-PROGRESS R&R Capital Projects as of Feb 29, 2016

Date	Num	Vendor	FY16 BUDGET \$	Expenditures	Description
261-15 Generator Switch Gear SW			\$881,000		Replace existing gear; includes spare breaker. Coordinate with RR260-15. Equipment being manufactured with March 2016 delivery scheduled. (E.Schofield)
	\$ 9,773	<i>FY15 Expenditures</i>		-	
02/29/16	16109	Segrity LLC		1,958	
	\$ 1,958	<i>FY16 Expenditures</i>		-	
Total 261-15 Generator Switch Gear SWL				11,730	
262-16 Manlifts SWL-TYL			\$130,000		Manlift for each project to safely access switchyard equipment, high-bay lighting and general building maintenance. Manlift delivered to Tyee with safety and operator training complete; in service. Manlift delivered to Swan Lake in January; training complete at both facilities. COMPLETE JAN 2016 (E.Schofield)
07/20/15	31298	Ketchikan Daily News		34	
07/20/15	31298	Ketchikan Daily News		34	
08/14/15	59525	Pilot Publishing, Inc.		29	
08/14/15	59525	Pilot Publishing, Inc.		29	
08/14/15	59505	Wrangell Sentinel		23	
08/14/15	59505	Wrangell Sentinel		23	
09/22/15	24724	Tyler Rental, Inc.		65,900	
09/22/15	24725	Tyler Rental, Inc.		63,900	
09/30/15	MAD4548-201509	"Bank of America		457	
09/30/15	MAD4548-201509	"Bank of America		457	
09/30/15	SCH3058-201509	"Bank of America		157	
09/30/15	SCH3058-201509	"Bank of America		157	
10/08/15	SCH201509	.Schofield, Ed		2	
11/04/15	1504	Stikine Transportation		806	
01/31/16	15176	Boyer Towing, Inc.		1,474	
	\$ 133,482	<i>FY16 Expenditures</i>			
Total 262-16 Manlifts SWL-TYL				133,482	
263-16 CTs-Relay WRG Circuit Swl			\$201,000		Additional protection-control relays and current-sensing equipment in the Wrangell switchyard. Preparing for bid. (S.Henson)
02/29/16	9157	Electric Power Systems Inc.		4,884	
	\$ 4,884	<i>FY16 Expenditures</i>			
Total 263-16 CTs-Relay WRG Circuit Sw				4,884	

Southeast Alaska Power Agency

WORK-IN-PROGRESS R&R Capital Projects as of Feb 29, 2016

Date	Num	Vendor	FY16 BUDGET \$	Expenditures	Description
264-16 Cooling System TGB SWL			\$130,000		Closed-loop heat exchanger cooling system for Swan Lake
08/04/15	T2079301	Tyler Industrial Supply		95	Unit 1 and Unit 2 turbine guide bearings. Equipment
09/15/15	7495	Electric Power Systems Inc.		2,769	scheduled for delivery by Thermotech Corp. in December.
10/13/15	7761	Electric Power Systems Inc.		3,972	Placed into service Mar 2016. (E.Schofield)
10/19/15	41550730	McMaster-Carr		298	
10/31/15	8085	Electric Power Systems Inc.		6,446	
12/14/15	83297	Channel Electric		370	
12/14/15	83271	Channel Electric		1,946	
12/18/15	I378367	Platt Electric Supply Inc		589	
12/21/15	31530	Thermotech Corporation		62,602	
12/22/15	T2163901	Tyler Industrial Supply		2,600	
12/30/15	S186KET28N	Samson Tug & Barge		375	
12/30/15	I456521	Platt Electric Supply Inc		632	
12/31/15	8498	Electric Power Systems Inc.		1,014	
01/01/16	83397	Channel Electric		317	
01/04/16	K149684IN	Schmolck Mechanical Contractors I		3,350	
01/05/16	K149796IN	Schmolck Mechanical Contractors I		496	
01/07/16	K149910IN	Schmolck Mechanical Contractors I		634	
01/12/16	83561	Channel Electric		122	
01/12/16	11950	Ketchikan Mechanical, Inc.		104	
01/12/16	K150089IN	Schmolck Mechanical Contractors I		282	
01/20/16	K150498IN	Schmolck Mechanical Contractors I		397	
01/20/16	11994	Ketchikan Mechanical, Inc.		499	
01/20/16	83645	Channel Electric		1,100	
01/26/16	9008902166	Grainger		207	
01/26/16	192660	Service Auto Parts		330	
01/26/16	K150709IN	Schmolck Mechanical Contractors I		808	
02/11/16	K151536IN	Schmolck Mechanical Contractors I		293	
02/16/16	K151702IN	Schmolck Mechanical Contractors I		843	
	\$ 93,489	<i>FY16 Expenditures</i>			
Total 264-16 Cooling System TGB SWL				93,489	
265-16 Marker Balls OHL TYL			\$600,596		Replacement of original marker balls in the Tyee
	\$ -	<i>FY16 Expenditures</i>			transmission line. Preparing RFPs for spring 2015.
Total 265-16 Marker Balls OHL TYL				-	(S.Henson)
266-16 Pickup KTN			\$38,275		New pickup in Ketchikan for contractor use; sending current
10/31/15	ACT3225-201510	"Bank of America		1,000	KTN pickup to Tyee to replace pickup that will be disposed.
12/02/15	STOCK#152329	Evergreen Ford LLC		35,736	Vehicle delivered Dec 2015. CLOSED DEC 2015
12/17/15	S182KET35N	Samson Tug & Barge		795	(T.Acteson)
	\$ 37,531	<i>FY16 Expenditures</i>			
Total 266-16 Pickup KTN				37,531	
267-16 Roof-Siding Housing TYL			\$120,770		Replace roofing on Tyee Lake employee housing (3) and
	\$ -	<i>FY16 Expenditures</i>			crew quarters; vinyl siding on employee housing (3).
Total 267-16 Roof-Siding Housing TYL				-	Preparing RFPs for spring 2015. (S.Henson)

Southeast Alaska Power Agency

WORK-IN-PROGRESS R&R Capital Projects as of Feb 29, 2016

Date	Num	Vendor	FY16 BUDGET \$	Expenditures	Description
268-16 Vehicle SWL			\$20,000		Used 4-wheel drive, 8-9 passenger vehicle for use at Swan Lake during reservoir expansion construction. (T.Acteson)
	\$ -	<i>FY16 Expenditures</i>			
Total 268-16 Vehicle SWL				<u>-</u>	
269-16 Guy Thimbles STI			\$204,000		Replace guy thimbles on STI. Preparing RFPs for spring 2015. (S.Henson)
	\$ -	<i>FY16 Expenditures</i>			
Total 269-16 Guy Thimbles STI				<u>-</u>	
270-16 Dampeners OHL TYL			\$99,900		Replacement of 180 dampeners on Tye transmission line. Preparing RFPs for spring 2015. (S.Henson)
	\$ -	<i>FY16 Expenditures</i>			
Total 270-16 Dampeners OHL TYL				<u>-</u>	
271-16 Substation Upgrade WRG			\$45,025		Wrangell substation upgrades. Scheduled for completion in CY2016. (S.Henson)
	\$ -	<i>FY16 Expenditures</i>			
Total 271-16 Substation Upgrade WRG				<u>-</u>	
Total WIP R&R Capital Projects	\$		9,148,960	\$ 8,026,024	*

* Total Expenditures on this page includes deductions for partially-capitalized projects, and therefore do not match the Total Expenditures on the Summary page.



FY2016 R&R PROJECT

R&R 271-16

SUBSTATION UPGRADE WRG

Project	SUBSTATION UPGRADE - WRANGELL		
Description	Upgrades to substation and connection to Wrangell system		
Cost Estimate:	\$45,025	Start Date:	MAR 2016
Actual Cost:		Completion Date:	AUG 2016
Project Management: Steve Henson			
Project Discussion			
<p>A system-wide evaluation performed by Wrangell Municipal Light & Power (WML&P) identified upgrades needed in SEAPA's substation in Wrangell (presentation attached). Given the mutual benefit of the project to SEAPA and Wrangell and the fact that a clear point of delineation between the SEAPA substation and the Wrangell electrical system does not exist, the Board approved sharing the estimated cost of this project with the City of Wrangell.</p>			

Project Cost Estimate					
DESCRIPTION	COST EST.	SEAPA R&R	R&R BUDGET		SPENT
Materials	\$112,054	\$20,177	Approved FY16	\$45,025	\$0
Labor	47,600	15,600			
Backhoe/Bedding	10,000	5,000			
10% Contingency	16,966	4,248			
Total	\$186,620	\$45,025			\$0.00
Project Cost Estimate Discussion					
<p>As approved by the SEAPA Board on February 12, 2016, SEAPA is responsible for 50% of the estimated \$186,620 Substation Upgrade project. Based upon a review of the WML&P estimate, \$45,025 is directly attributable to the SEAPA substation underground cables and connections and is the basis for this R&R budget. The remainder of SEAPA's project cost will be expensed.</p>					

SUBSTATION UPGRADE WRG



SOUTHEAST ALASKA POWER AGENCY
WRANGELL/SEAPA SUBSTATION UPGRADE

Date: February 1, 2016
To: SEAPA Board of Directors
From: Trey Acteson, CEO
Subject: Wrangell/SEAPA Substation Upgrade

This memo is presented to the Board on behalf of Wrangell Municipal Light and Power (WML&P) Superintendent, Clay Hammer.

Last year, WML&P had a system-wide evaluation done on Wrangell's municipal distribution. Key considerations were:

- 1) Age and condition of different sections of the system
- 2) Effects of recent commercial and heat rate load growth
- 3) Additional burden effected by new communication installations
- 4) Capability of back up diesel generation

One of the findings of the study was that the connection to the Wrangell/SEAPA substation is in need of an upgrade. This is the point of origin for all power in Wrangell. Different factors including age, amperage class, condition, conductor size, and support structure configuration all put this at the top of the list as a high priority project.

Current configuration has the SEAPA substation with four (4) feeder breakers serving 350mcm aluminum conductors to cut-outs on a wooden "H" structure outside the substation yard. This "H" structure is the tie-in point for all four Wrangell feeders as well as the SEAPA substation and the Wrangell Powerhouse. Constructed in 1982, the installation is showing its years. The riser conductors are showing signs of oxidation at the connection points and have reached 80% rated ampacity in terms of loading. The "H" structure supports the risers leaving the substation as well as feeder and Wrangell Powerhouse tie-ins. This is the single most important and critical component in the entire Wrangell distribution system. Not only does its age make it a liability but its configuration makes it a "raptor magnet" receiving several bird strikes a year. This installation has reached the end of its life span and represents some serious reliability issues in addition to being a bottle neck to any additional load growth.



Wrangell Distribution "H" Structure (central tie-in point for all electrical services in Wrangell)

WML&P proposes to take this project on in-house, using Wrangell linemen and local construction contractors. We will upgrade the underground conductor coming from the substation as well as taking the existing H structure out and replacing it with a series of pad mounted 600 amp class switch cabinets to accommodate the tie-ins. The switch cabinets would be able to provide three different visual openings required to enable a SEAPA crew and contractors to safely work within the substation during maintenance outages as well as during line or diesel plant outages. Currently those visual openings are provided by opening cut-outs on the "H" structure and can only be accessed by linemen in a bucket truck. Having them on the ground will make them safer and easier to operate. All overhead conductors between the substation and the Wrangell power house will be put underground. A one-line Drawing is attached (Attachment #1).

Given the mutual benefit this project has for both SEAPA and Wrangell, WML&P is proposing that the cost of the project be shared. The estimated cost is \$186,619.00. WML&P asks that the board consider sharing 50% of the cost, or \$93,309.50 by way of an increase to SEAPA's FY2016 budget (Account 562250/Maintenance, Wrangell Substation). A written estimate itemizing time and materials is attached (Attachment #2).

SUBSTATION UPGRADE WRG

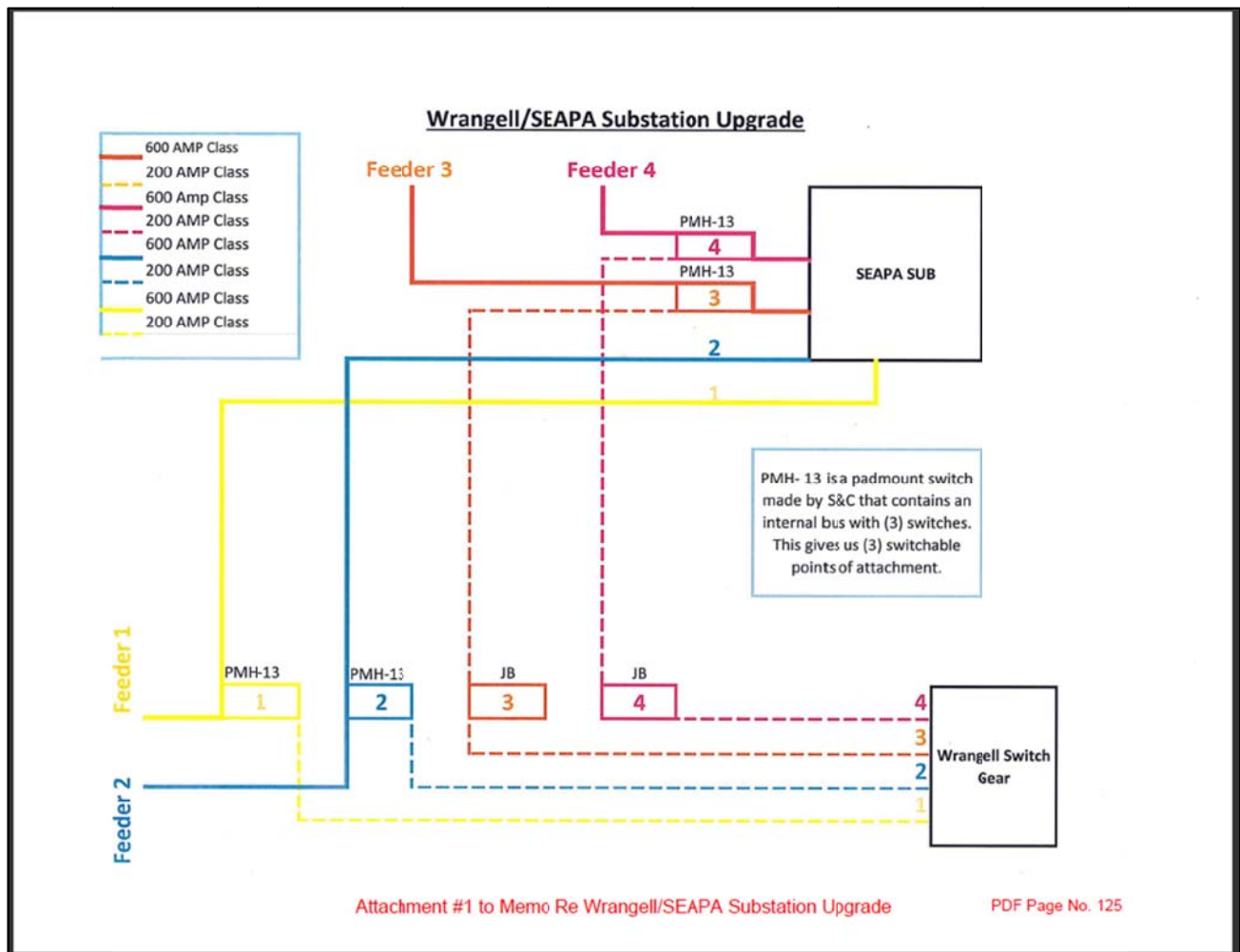
Please consider the following suggested motion:

SUGGESTED MOTION

I move to increase SEAPA's FY2016 budget by \$93,309.50, for SEAPA's 50% share of the cost of an upgrade to the connection to the Wrangell/SEAPA substation.

Attachments:

- #1 One-Line Drawing
- #2 Estimate for WMP&L Feeder Distribution Upgrade





FY2016 R&R PROJECT

R&R 271-16

SUBSTATION UPGRADE WRG

Estimate

WRANGELL MUNICIPAL LIGHT & POWER

DATE 1/21/2016

Estimate for: **WML&P Feeder Distribution Upgrade**

JOB DESCRIPTION: Upgrade Feeder Risers, SEAPA /WRG Substation

QUANTITY	DESCRIPTION	UNIT PRICE	TOTAL
2500	350 MCM CU	\$ 7.25	\$ 18,125.00
1000	4/0 URD CU	\$ 4.96	\$ 4,960.00
100	4" PVC Conduit 10' long	\$ 18.05	\$ 1,805.00
2	4" Metal Conduit 10' long	\$ 155.00	\$ 310.00
48	600 amp term kits	\$ 85.50	\$ 4,104.00
24	200 amp term kits	\$ 75.90	\$ 1,821.60
4	S&C PMH-13 600 amp class padmount switches	\$ 16,518.00	\$ 66,072.00
2	JB Boxes 200 amp class	\$ 1,800.00	\$ 3,600.00
2	55' class 3 utility poles	\$ 1,014.00	\$ 2,028.00
4	Nordic Pads for S&C Switches	\$ 1,800.00	\$ 7,200.00
2	55' class 3 utility poles	\$ 1,014.00	\$ 2,028.00
			\$ -
160	4 man line crew per hr	\$ 260.00	\$ 41,600.00
40	bucket truck per hr	\$ 85.00	\$ 3,400.00
40	digger/derrick truck per hr	\$ 65.00	\$ 2,600.00
			\$ -
	backhoe time and bedding material		\$ 10,000.00
			\$ -
	10% contingency		\$ 16,966.00
			\$ -
			\$ -
			\$ -
			\$ 188,819.60

Estimate for the materials required to replace and upgrade the existing SEAPA/WML&P Substation underground conductors and pole risers.



FY2016 R&R PROJECT

R&R 271-16

SUBSTATION UPGRADE WRG

SUBSTATION UPGRADE - WRANGELL					
Qty	Description	Unit Price	Total	SEAPA Units	SEAPA R&R Cost
2,500	350 MCM CU	\$ 7.25	18,125	2,500	18,125
1,000	4/0 URD CU	4.96	4,960	-	-
100	4" PVC Conduit 10' long	18.05	1,805	-	-
2	4" Metal Conduit 10' long	155.00	310	-	-
48	600 amp term kits	85.50	4,104	24	2,052
24	200 amp term kits	75.90	1,822	-	-
4	S7C PMH-13 600 amp class padmount switches	16,518.00	66,072	-	-
2	JB Boxes 200 amp class	1,800.00	3,600	-	-
2	55' class 3 utility poles	1,014.00	2,028	-	-
4	Nordic Pads for S&C switches	1,800.00	7,200	-	-
2	55' class 3 utility poles	1,014.00	2,028	-	-
Subtotal: Materials			112,054		20,177
160	4 man line crew per hr	\$ 260.00	41,600	60	15,600
40	bucket truck per hr	85.00	3,400	-	-
40	digger/derrick truck per hr	65.00	2,600	-	-
Subtotal: Labor			47,600		15,600
1	Backhoe time and bedding material	\$ 10,000.00	10,000	0.5	5,000
Subtotal: Backhoe & Bedding			10,000		5,000
Subtotal: Materials, Labor, Backhoe & Bedding			169,654		40,777 25%
10%	Contingency		16,966	0.5	4,248
			\$ 186,620		45,025

Project Estimate Total \$ 186,620

SEAPA RR271-16 \$ 45,025

SEAPA O&M Expense 562250 \$ 48,285

SEAPA Project Cost \$ 93,310

Wrangell Project Cost \$ 93,310



CLOSED FY16: RR262-16

MANLIFTS

Project	Manlift (2 Used) – Tye Lake and Swan Lake		
Description	Replace 1988 boom truck at Tye and provide appropriate equipment at Swan.		
Cost Estimate:	\$130,000 (65K each)	Start Date:	JUL 2015
Actual Cost:	\$133,482	Completion Date:	SEP 2015
Project Management: Ed Schofield			

Project Discussion

Tye Lake - The boom truck at Tye was red-tagged in May because it has not had an inspection and it is highly doubtful it could ever be certified. The flatbed truck is 27 years old and the boom assembly, which was retrofitted from another truck, is even older. The truck does not have basic safety equipment such as an anti-two block device or a load cell, and the hydraulic pump is apparently undersized. The turret O-rings have been completely rebuilt, but continue to leak. It is difficult to get parts for the truck due to its age. This equipment serves an essential purpose of providing access to substation and microwave equipment for emergency repair and maintenance work.

Swan Lake – A man lift would enable staff to reach high bay lighting, switchyard equipment and perform general building maintenance not otherwise safely accessible by ladder.

Project Cost Estimate

DESCRIPTION	COST EST.	VENDOR	BUDGET REQUEST		SPENT
Procurement	\$130,000		Requested FY16	\$130,000	\$0
Total	\$130,000		Total		\$0

Project Cost Estimate Discussion

Estimate is based on equipment sale and auction websites for a 2008 Genie S65 or newer, with approximately 2000 hours.



262-16 Manlifts SWL-TYL

Date	Invoice #	Vendor	Amount
07/20/15	31298	Ktn Daily News	34
07/20/15	31298	Ktn Daily News	34
08/14/15	59525	Pilot Publishing, Inc.	29
08/14/15	59525	Pilot Publishing, Inc.	29
08/14/15	59505	Wrangell Sentinel	23
08/14/15	59505	Wrangell Sentinel	23
09/22/15	24724	Tyler Rental, Inc.	65,900
09/22/15	24725	Tyler Rental, Inc.	63,900
09/30/15	MAD4548-201509	"Bank of America	457
09/30/15	MAD4548-201509	"Bank of America	457
09/30/15	SCH3058-201509	"Bank of America	157
09/30/15	SCH3058-201509	"Bank of America	157
10/08/15	SCH201509	.Schofield, Ed	2
11/04/15	1504	Stikine Transportatn	806
01/31/16	15176	Boyer Towing, Inc.	1,474

Total 262-16 Manlifts SWL-TYL

133,482



CLOSED FY16: RR262-16

MANLIFTS

Closeout Summary - Genie 65S Boom Lift, Tyee Lake and Swan Lake.

SEAPA issued a Request for Quotes (RFQ) on July 21, 2015 for the purchase of two Genie 65S Boom Lifts. The specifications listed within the RFQ were specific and specialized to the Genie 65S. The bid was awarded to Tyler Rental. OSHA certified operator training was provided to all plant staff prior to equipment being put in to service. The training included a three hour on-line training course and an on-site operator and general preventive maintenance training, provided by a Certified Genie Technician. The Genie lifts are in service at each perspective plant, providing a safe means of access to aerial work required projects.

RFQ Equipment Specifications:

- Model Genie S65 Boom Lift, SN 17350 (2008) or later
- Deutz F3L 20011 F Engine or Perkins 404-22 Engine
- 4X4 Drive
- 500 lb. capacity
- 2,500 hours or less
- Tires shall be Pneumatic with tread depth 60% or better
- Condition used - very good to excellent, mechanically and cosmetically
- 65' foot platform Height
- 71' working height
- 8' foot basket
- Certified Genie Equipment Dealer functional operation and safety inspection with documentation
- Manufacturer's Pre-Delivery Inspection Report pertaining to equipment serial number and hour meter. Pre-Delivery service is to be completed by a qualified Genie Service Technician in accordance with the Manufacturer's specifications and requirements as listed in the Manufacturer's Equipment Service Manual Section, Pre-Delivery Preparation. The Pre-Delivery Preparation Section from the Manufacturer's Service Manual is attached as **Attachment 5** to this RFQ.
- Each unit shall have a complete printed set of operators, maintenance, and parts manuals per unit serial number.
- Provide historical maintenance service records
- Verify and confirm all required **DANGER**, **WARNING**, **CAUTION**, and **NOTICE** decals are legible and properly placed

SOUTHEAST ALASKA POWER AGENCY - DISBURSEMENTS

Accounts	Total
Revenue Fund	\$ 1,038,201.49
R&R Fund	\$ 85,262.31
New Generation Fund	\$ 156.00
TOTAL	<u>\$ 1,123,619.80</u>

SUGGESTED MOTION

I move to approve disbursements for the months of February & March 2016
in the amount of \$1,123,619.80.

This section provides an outline of significant expenditures paid during this period:			
Kuenz America Inc.	SWL WIP Flashboard and Flashboard Trigger Design	\$	131,503
McMillen LLC	SWL WIP Engineering		132,318
Wells Fargo Bank	Principal & Interest, Series 2009 and 2015 Bonds		262,683
Wrangell Borough	PERS Lum-Sum Termination Liability		159,440

FEBRUARY & MARCH 2016

Invoice No.	Company (Vendor)	Revenue Fund	R&R Fund	New Gen
1379527	Alaska Dispatch News	131.97		
845	Alaska Forest Assn	1,000.00		
27655	Alaska Marine Lines		480.00	
APCM201601	Alaska Permanent Capital Inc	1,666.96		
APCM201602	Alaska Permanent Capital Inc	1,668.55		
1802	Ascent Law Partners LLP	525.00		
1803	Ascent Law Partners LLP	17,395.00		
2578997	Basler Electric Company		22,680.00	
50775	Bay Company Enterprises, LLC	113.40		
50738	Bay Company Enterprises, LLC	122.50		
50835	Bay Company Enterprises, LLC	669.95		
50836	Bay Company Enterprises, LLC	43.20		
151058	Bay Company Enterprises, LLC	1,076.82		
49970	Bay Company Enterprises, LLC	44.95		
235614	Best Western Landing Hotel	154.99		
235615	Best Western Landing Hotel	161.83		
238159	Best Western Landing Hotel	-	160.84	
15176	Boyer Towing, Inc.	2,947.50	2,947.50	
673358	Buchanan Automation Inc	1,692.11		
237906	Callister, Nebeker & McCullough	1,221.00		
CAM201603	Cambria Properties LLC	1,475.00		
CAM201604	Cambria Properties LLC	1,475.00		
CBC201512	CBC Construction, Inc.	7,383.00		
83397	Channel Electric		317.00	
83645	Channel Electric		1,100.00	
195553	City Market	23.38		
188732	City Market	23.66		
188733	City Market	(21.22)		
307235	City Market	324.42		
195691	City Market	140.28		
305446	City Market	231.15		
45019	Commonwealth Associates, Inc.	44.25		
45225	Commonwealth Associates, Inc.	531.00		
192579	Cummins, Inc.	177.56		
3309273	Daily Journal of Commerce	112.20		

SOUTHEAST ALASKA POWER AGENCY - DISBURSEMENTS

FEBRUARY & MARCH 2016

Invoice No.	Company (Vendor)	Revenue Fund	R&R Fund	New Gen
10938	DHittle & Associates, Inc.	3,440.00		
10987	DHittle & Associates, Inc.	3,956.00		
4325	Freeman & Sons Machine and Fabrication	445.50		
263168	Frontier Shipping & Copyworks	25.00		
80416	Futaris Inc	6,145.00		
80458	Futaris Inc	6,145.00		
SEAPA00216	G2Risk Consulting	731.25		
64260947	GE Capital	595.00		
64427149	GE Capital	595.00		
1601S2	Glenn Brewer Consulting Engineer	2,600.00		
1602S2	Glenn Brewer Consulting Engineer	10,300.00		
9005210738	Grainger	2,037.96		
9005615407	Grainger	285.50		
9005644027	Grainger	184.71		
9008595608	Grainger	822.83		
9008902166	Grainger		207.27	
9009288821	Grainger	975.60		
9010167196	Grainger	1,177.00		
9012448982	Grainger	113.18		
9020887155	Grainger	333.00		
475096H	HDR Alaska, Inc.	4,021.86		
479159H	HDR Alaska, Inc.	1,995.88		
4453	I Even Do Windows	300.00		
4495	I Even Do Windows	300.00		
32010	Ketchikan Daily News	147.30		
32011	Ketchikan Daily News	48.90		
32124	Ketchikan Daily News	59.15		
SWL2016	Ketchikan Gateway Borough	10.00		
KGB201603	Ketchikan Gateway Borough	3,984.75		
KGB201604	Ketchikan Gateway Borough	3,984.75		
11994	Ketchikan Mechanical, Inc.		498.88	
201601249	Kleinschmidt Associates Inc.	2,852.08		
201602173	Kleinschmidt Associates Inc.	987.26		
201602174	Kleinschmidt Associates Inc.	513.71		
2205	Kuenz America Inc	92,526.68		
2232	Kuenz America Inc	38,976.00		
LK201603	LK Storage & Rentals	78.00		78.00
LK201604	LK Storage & Rentals	78.00		78.00
96052	LNM Services	73.54		
96147	LNM Services	79.52		
96158	LNM Services	15.75		
96162	LNM Services	28.04		
96209	LNM Services	34.58		
412	May Engineering Services LLC	487.50		
504	May Engineering Services LLC	4,856.25		
47806084	McMaster-Carr	2,869.54		
48710326	McMaster-Carr	1,100.99		
48748833	McMaster-Carr	231.63		
5619	McMillen LLC	28,800.00		
5706	McMillen LLC	67,951.06		
5761	McMillen LLC	35,566.70		
160229	Morris Publishing Group	436.46		
41004507	MSC Industrial Supply Co.	121.97		
38839	Nolan Center	1,390.00		
NWHA2016	Northwest Hydroelectric Association	1,000.00		
16020630	NRECA 798185 Group Ins	18,261.16		

SOUTHEAST ALASKA POWER AGENCY - DISBURSEMENTS

FEBRUARY & MARCH 2016

Invoice No.	Company (Vendor)	Revenue Fund	R&R Fund	New Gen
16030630	NRECA 798185 Group Ins	18,261.16		
16020630A	NRECA 798324 Group Ins Admin	1,617.51		
16030630A	NRECA 798324 Group Ins Admin	1,617.51		
16028044A	NRECA 798330 RSP Admin	674.17		
16038044A	NRECA 798330 RSP Admin	674.17		
16028044	NRECA 798369 RSP Trust Contrib	35,925.37		
16038044	NRECA 798369 RSP Trust Contrib	37,142.59		
383434	Ottesen's Inc	37.98		
383602	Ottesen's Inc	34.97		
383872	Ottesen's Inc	139.98		
383921	Ottesen's Inc	22.49		
383943	Ottesen's Inc	19.99		
383956	Ottesen's Inc	85.98		
384197	Ottesen's Inc	399.99		
384198	Ottesen's Inc	93.43		
384314	Ottesen's Inc	31.93		
384509	Ottesen's Inc	5.78		
384598	Ottesen's Inc	11.45		
385031	Ottesen's Inc	3.36		
2270	Pacific Wings Inc.	285.00		
191	Petersburg Bottled Gas	24.00		
33636	Petersburg Bottled Gas	89.00		
PSG20160225	Petersburg Chamber of Commerce, Inc	620.00		
463	PML Environmental	720.00		
1137-1350	Pure Alaskan Water	126.78		
769	Ray Matiashowski & Associates	4,000.00		
779	Ray Matiashowski & Associates	4,000.00		
K149684IN	Schmolck Mechanical Contractors Inc		3,349.94	
K150089IN	Schmolck Mechanical Contractors Inc		281.52	
K150498IN	Schmolck Mechanical Contractors Inc		396.92	
K150709IN	Schmolck Mechanical Contractors Inc		808.28	
K151536IN	Schmolck Mechanical Contractors Inc		293.24	
K151702IN	Schmolck Mechanical Contractors Inc	-	843.45	
315621	SE Business Machines	436.00		
16091	Segrity LLC		10,295.00	
16092	Segrity LLC	5,836.25		
16093	Segrity LLC		900.00	
16094	Segrity LLC		5,670.00	
16100	Segrity LLC		3,480.00	
16099	Segrity LLC		243.58	
16097	Segrity LLC		1,212.71	
16098	Segrity LLC		4,513.03	
16102	Segrity LLC	-	4,013.75	
16103	Segrity LLC	-	6,817.50	
16104	Segrity LLC	-	3,817.43	
16105	Segrity LLC	-	2,166.02	
16106	Segrity LLC	8,100.00		
16107	Segrity LLC	290.00		
16108	Segrity LLC	-	1,993.75	
16109	Segrity LLC	-	3,915.00	
426272	Sentry Hardware & Marine	79.08		
427560	Sentry Hardware & Marine	130.14		
427724	Sentry Hardware & Marine	28.91		
427969	Sentry Hardware & Marine	30.25		
192660	Service Auto Parts		329.70	
1360	Sign Pro	68.86		

SOUTHEAST ALASKA POWER AGENCY - DISBURSEMENTS

FEBRUARY & MARCH 2016

Invoice No.	Company (Vendor)	Revenue Fund	R&R Fund	New Gen
SHRM2016	Society for Human Resource Mgmt	190.00		
568658	Southeast Auto & Marine Parts, Inc	(26.07)		
568697	Southeast Auto & Marine Parts, Inc	55.08		
5556	Southeast Conference	275.00		
SEC2016SPON	Southeast Conference	1,500.00		
3709	Stikine Inn	1,556.00		
3716	Stikine Inn	102.00		
52505	Sunrise Aviation Inc	3,200.00		
52530	Sunrise Aviation Inc	830.00		
52541	Sunrise Aviation Inc	830.00		
52546	Sunrise Aviation Inc	830.00		
52521	Sunrise Aviation Inc	4,205.00		
52556	Sunrise Aviation Inc	870.00		
52559	Sunrise Aviation Inc	1,305.00		
52562	Sunrise Aviation Inc	405.00	405.00	
52563	Sunrise Aviation Inc	1,305.00		
52567	Sunrise Aviation Inc	1,060.00		
52568	Sunrise Aviation Inc	1,375.00		
217	Svensden Marine	1,489.60		
1001	Sweet 'N' Sassy Blanks & Such	174.00		
324881	Taquan Air	467.45		
29751	Temsco Helicopters, Inc.	3,834.45		
51011000	Tetra Tech Inc	7,964.80		
51010961	Tetra Tech Inc	354.25		
51024311	Tetra Tech Inc	10,567.73		
17895	TexRus	2,377.00		
18027	TexRus	4,683.13		
715901	Tongass Business Center	6.30		
718840	Tongass Business Center	108.98		
722300	Tongass Business Center	109.82		
732300	Tongass Business Center	83.98		
732301	Tongass Business Center	28.38		
740980	Tongass Business Center	87.17		
746630	Tongass Business Center	48.00		
TR20160222	Tyler Rental, Inc.	2,550.00		
WCI201603	Ward Cove Industries LLC		1,125.00	
WF09I-201603	Wells Fargo 2009 Interest	28,620.70		
WF09P-201603	Wells Fargo 2009 Principal	62,079.96		
WF15I-201503	Wells Fargo 2015 Interest	40,640.63		
1284521	Wells Fargo Bank MN	2,500.00		
WF09-201602	Wells Fargo Bank-Corporate Trust	90,700.66		
WF15-201602	Wells Fargo Bank-Corporate Trust	40,640.63		
20140816	Wrangell City & Borough	159,440.00		
SRBF2016	Wrangell City & Borough	100.00		
100	Wrangell Elks Lodge	1,560.00		
60667	Wrangell Sentinel	195.50		
201601	Bank of America	15,678.78		
201602	Bank of America	19,648.11		
201602	Board of Director Reimbursement	295.58		
201602	Employee Reimbursement	2,002.86		
Total Disbursements		\$ 1,038,201.49	\$ 85,262.31	\$ 156.00
		\$1,123,619.80		

* Bank of America credit card charges include all travel, most telecom and some utility:
 ACS, AT&T Mobility, AP&T, GCI, Globalstar, KPU, PSG Borough, Roadpost, Wrangell City & Boro
 These recurring telecom & utility charges are approximately \$12,000/month.



Southeast Alaska Power Agency CEO Report

DATE: April 20, 2016
TO: SEAPA Board of Directors
FROM: Trey Acteson, CEO

SWAN LAKE RESERVOIR EXPANSION

Considerable time and effort has been dedicated to the Swan Lake construction contract award, conformance, and other critical details necessary to support this project. Administratively, things are moving very rapidly at this point. Final contract details and legal reviews are underway. Contractor bond and insurance deliverables are in progress. Pacific Pile & Marine, L.P. (PPM) project management visited the site yesterday and SEAPA staff and McMillen Jacobs Associates are meeting with the PPM team today to finish pre-construction planning.

Controlling Swan Lake levels during construction is paramount to the success of the project. We cannot spill during this period due to work on the spillway. SEAPA solicited bids for a 5MW Load Bank and there is an item listed under New Business in the Agenda for the Board's consideration and approval. Additionally, SEAPA has proposed a Generation Adjustment Process to KPU to address the potential need for them to turn down some of their hydro assets at specific times for additional level mitigation at Swan. We anticipate a review meeting with KPU management next week and will present a refined draft to the Board when both sides have reached preliminary agreement. We'll provide a status update at the Board meeting.

Mr. Wolfe's report includes additional project specific information.

GOVERNMENTAL AFFAIRS

I attended the Alaska Power Association's legislative fly-in during February and led the annual Lunch & Learn event. While in Juneau, our group met with several key legislators, with a focus on maintaining existing energy programs and enhancing financing mechanisms as the State migrates away from grants. I also met with Senator Stedman and discussed relevant issues specific to SEAPA initiatives. I was able to speak with the Governor a couple of times over the course of the event.

Governor Walker visited the SEAPA office in March and I had the opportunity to showcase the Swan Lake Expansion Project. The Governor expressed an interest in returning to see the project when it nears completion. I also provided an overview of our hydrosite investigation efforts and explained SEAPA's role as a regional entity.

I met briefly with Congressman Young while he was in Ketchikan last week. He was not aware of the proposed 70% FERC fee increase. I followed up with his office after the meeting and provided background information and requested they support our ongoing efforts to address this unreasonable increase. Additionally, I am working with the Alaska Energy Authority and other affected Alaska FERC licensees outside our region to formally request they open up rulemaking on the fee increase. Senator Murkowski's office is already helping to lead the charge on this. The annual increase is approximately \$35K for SEAPA, so we are actively working to oppose the change.

Senator Murkowski's office called me last week to advise that they anticipate movement on the Energy Policy Modernization Act (S. 2012) in the next week or so, and that they had locked in a unanimous consent vote that will allow a simple voice vote for amendments. As detailed in my previous report, S. 2012 failed a cloture vote at the beginning of February and was pulled from the floor. SEAPA is working to correct a land conveyance error associated with the Swan Lake Hydroelectric Project through this legislative vehicle. The error was discovered during the Swan Lake License Amendment process, and appears to be the result of a flaw on an early USGS topographic map, which incorrectly identified the 350' elevation in the upper reaches of Lost Creek. During the conveyance process to the State, approximately 25.8 acres were inadvertently missed. They were very optimistic that our amendment and the parent bill S. 2012 were going to advance. Just this morning, I received an update from the Senator's office that the Bill had passed the house with our amendment included. It will now go to conference to be merged with the House version. If signed into law by the President, the BLM will have 18 months to effect the transfer of the remaining originally intended lands to the State of Alaska. Completing this exchange is quite significant, as it is anticipated to save SEAPA approximately one million dollars during Swan Lake relicensing.

As reported earlier, the U.S. Department of Agriculture Forest Service released the Proposed Amended Land and Resource Management Plan (Draft Amendment) and Draft Environmental Impact Statement (DEIS) for the Tongass National Forest (Tongass) on November 20, 2015. This triggered a 90-day public review and comment period. SEAPA filed comments on February 22nd seeking further clarity in Section 5-12 of the Draft Amendment that outlines a Renewable Energy Direction. As currently written, it leaves several areas open for broad interpretation, which creates uncertainty for renewable energy development. This translates to more risk and higher costs. The USFS is currently compiling comments, which will be primarily focused on timber. I am hopeful that our proposed changes to the Renewable Energy Direction will be given due consideration. This process will likely take a few more months and require further engagement as comments are addressed.

I met with the Tongass Forest Supervisor to help resolve outstanding issues concerning the Kake-Petersburg Intertie (KPI) permitting process. Last-minute policy changes in D.C. regarding right-of-way authorities threatened to sidetrack the process down the home stretch. These items have since been addressed and the Final EIS and Draft Record of Decision for the KPI should publish following final USFS legal review.

SEAPA filed comments to AEL&P's rate tariff filing to the Regulatory Commission of Alaska (RCA) to correct disparaging and false statements made by AP&T. It is important that we continue to monitor RCA activities to ensure attacks don't go unanswered and/or result in costly unwarranted regulatory burden.

PUBLIC RELATIONS

I presented a broad range of initiatives SEAPA is currently working on, many of which most folks in the region are not fully aware of, to a full house during the Southeast Conference (SEC) Mid-Session Summit in Juneau in March. The Summit serves as a great educational opportunity to stay attuned to the important economic and population nuances that impact the future of energy in Southeast. Several prominent agency and legislative folks were in attendance. SEC has been a strong supporter of SEAPA over the years and I have a seat on their energy committee. They will be holding their annual meeting in our member community of Petersburg this summer.

Metlakatla Power & Light reached out to me in early March to express renewed interest in interconnection to the grid. They were previously in a position to potentially sell excess power, but are now having to burn supplemental diesel. In contrast to SEAPA's hydro resources, the recent warmer-wet weather pattern has negatively impacted their inflow regime. We discussed potential interim water management considerations and I also encouraged them to engage KPU to consider agreements necessary for interconnection near Mountain Point. This issue will evolve over time.

SEAPA has worked with the USFS to draft a Volunteer Maintenance Agreement committing SEAPA time and resources for maintaining four USFS Public Use Cabins. We are still waiting for the USFS to finalize approvals on their end.

The Southeast Regional Aquaculture Association (SSRAA) Chinook salmon rearing pens are now in-place adjacent to our Swan Lake Power Facilities. Per our MOU with SSRAA, SEAPA is providing some basic support for their personnel during the rearing period until the release.

BEST PRACTICES AND PROCESS IMPROVEMENTS

The scheduled field assessment at Tyee by the Bureau of Reclamation was conducted and measures are underway to address priority items that were identified.

PERSONNEL

SEAPA's Engineering Intern from last year has been contacted and is scheduled for onboarding activities on May 11th.

A job posting and related advertising is in place for a temporary Administrative Assistant to support document retention policy activities in our Wrangell satellite office. Interviewing will commence prior to the end of this month.

WHOLESALE POWER RATE AND REBATES

The Board has expressed an interest in reviewing the current wholesale power rate and rebates ahead of the FY17 budget process. I will have a PowerPoint presentation prepared and will provide an overview at the Board meeting.

Date: April 13, 2016

To: Trey Acteson, Chief Executive Officer

From: Steve Henson, Operations Manager

Re: Operations Manager's Report for April 28, 2016 Board Meeting

MAJOR CONTRACTS and PROJECTS

R&R232-13 Satellite Communications System

SEAPA has contracted with Futaris for materials and support for the satellite dish at Tye Lake and with Alaska Clearing for the installation of the platform and fencing. Installation of the satellite and phone system will be ongoing over the next six weeks utilizing SEAPA staff as much as possible.



Satellite Dish Platform

R&R263-16 CTs & Relay for Circuit Switcher – Wrangell Switchyard

This R&R Project is the next phase of the Circuit Switcher Project, which is the engineering, procurement and installation of CTs on the spur line so that this section can be protected and sectionalized by relay action in the event of a line fault. We have contracted with Electric Power Systems for the Engineering and Design Phase of this project.



CS-T36 New Circuit Switcher

Met Tower

We have chosen the South Mitkof marine terminal as the location for the AEA provided Meteorological (MET) Tower to begin gathering wind data. Since it will be installed on State lands we will not be required to permit with the USFS. Staff is working toward identifying State permit requirements.

R&R231-13 Swan-Tyee Intertie Helipads

The helipads manufactured by Touchdown have been received and are in storage at Ward Cove. Installation has begun by Bam LLC. A total of 50 helipads were installed in 2015. Bam is expected to begin mobilizing the first week of May to finish the installation of the remaining pads.



New Helipad at Tower 97 on the Intertie

R&R248-14 Lathe

The lathe and a mill have been ordered. There are a couple of back ordered tooling items still pending. Once the back ordered items are received by the supplier, shipment will take place.

R&R267-16 Roof and Siding on Tyee Crew Housing

There is a recommendation under New Business in the Agenda for Board approval of a contractor to perform the roofing and siding installation on the crew housing at Tyee Lake.

R&R265-16 Marker Balls

Staff will be issuing a Request for Proposals for the installation of the marker balls on the Tyee Lake transmission line, which will be ready for Board approval at the June 2016 meeting.

ATV Use on the Tyee Transmission System

Meridian Environmental was selected for the permitting effort required by the USFS for the use of the ARGO on select areas of the Tyee transmission line right-of-way. Comments from agencies have been received by the USFS and the draft Environmental Assessment (EA) has been completed by Meridian. The EA includes resolution of the comments and was submitted to

the USFS Joint Review Team on December 18, 2015, for final approval. Upon acceptance of the draft by the USFS review committee, Meridian will publish the EA for public comment. After 45 days the amendment to the permit can be finalized and next season we will be able to use the Argo. However, the draft has not been accepted as yet. There was an exceptional amount of comments noted from the USFS and Meridian is addressing those. This has caused more work for Meridian and has pushed the schedule of completion back.

Tyee Lake Report

Alarm controls and protection work. Staff assisted Segrity with wiring, device installation and checkout.

Brushing on Wrangell Island. Staff is working in the Pat's Creek drainage.

Conduit installation for fiber and power for the satellite system. Junction boxes have been installed, power panels reconfigured, and feed to the storage building for the take off to the platform is done.

Cooling water refurbishment. Staff worked with Segrity LLC on installation of devices and checkout.

Annual Maintenance

The following dates are scheduled for SEAPA's shutdown to conduct annual maintenance although some shutdown activities may be affected by Swan Lake construction:

Dates	Location
May 31 to June 7, 2016	Tyee Lake
June 8 to June 11, 2016	Swan Lake
June 12 to June 22, 2016	Swan-Tyee Intertie

Electric Power Constructors will be performing "five-year" transformer testing in Petersburg, Wrangell, and Tyee. Chatham Electric will be installing dampeners and guy wire thimbles during their regular transmission line maintenance window.

Staff will be available during the meeting to answer any questions or concerns.



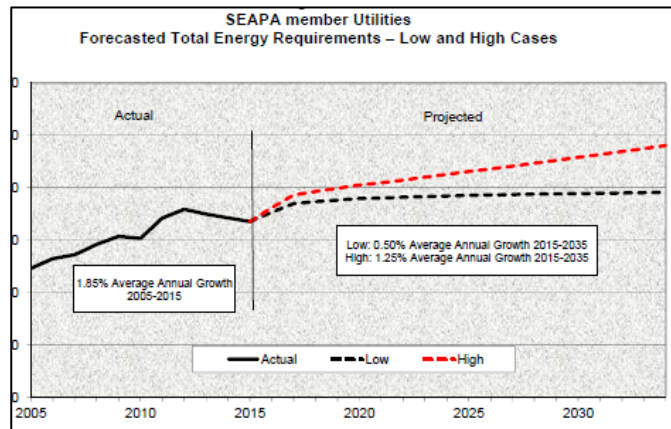
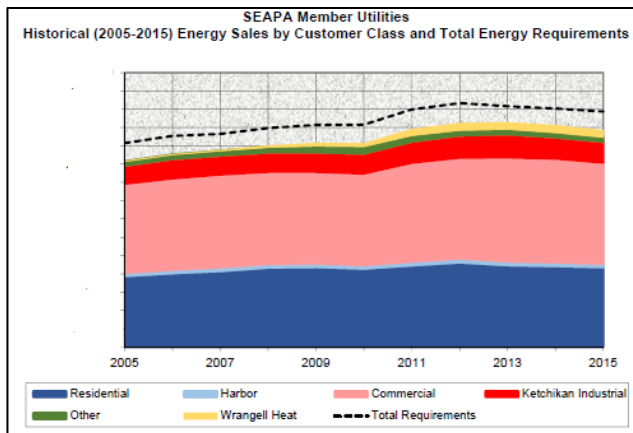
SOUTHEAST ALASKA POWER AGENCY

Date: April 18, 2016
To: Trey Acteson, Chief Executive Officer
From: Eric Wolfe, P.E., Director of Special Projects
Re: Director of Special Projects Report

Load Forecasting

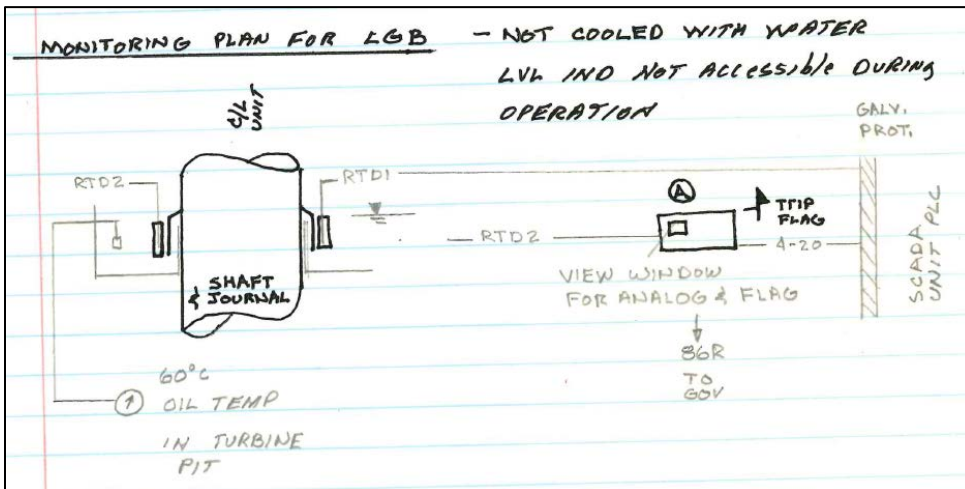
Historically our region has not conducted load forecasts. You have to go back to the Swan Lake and Tyee Lake license applications to find discussions on population growth, economic trends, oil pricing and the resulting load forecast. During the 2011 Southeast Alaska Integrated Resource Plan, Black & Veatch employed a generalized approach using rules-of-thumb methods not specific to our cities. This approach was appropriate for a high level regional overview, but not a process we want to carry into our future resource planning efforts. Resource planning is the most difficult and most strategic aspect of utility planning. How and who will provide energy and capacity affects the type and cost of power ratepayers purchase. Often these decisions have long-term binding consequences, thus load forecast data and methodology are sensitive and proprietary.

John Heberling of D.Hittle and Associates completed the first draft report that looks at specific customer classes, and how an increase or decrease in customer class affects electrical demand. He has also related customer class to population and/or to heating-degree-day, a weather metric. We will discuss the meaning and ramifications of the load forecasts at the board meeting and also discuss the scope and importance of the ongoing effort.

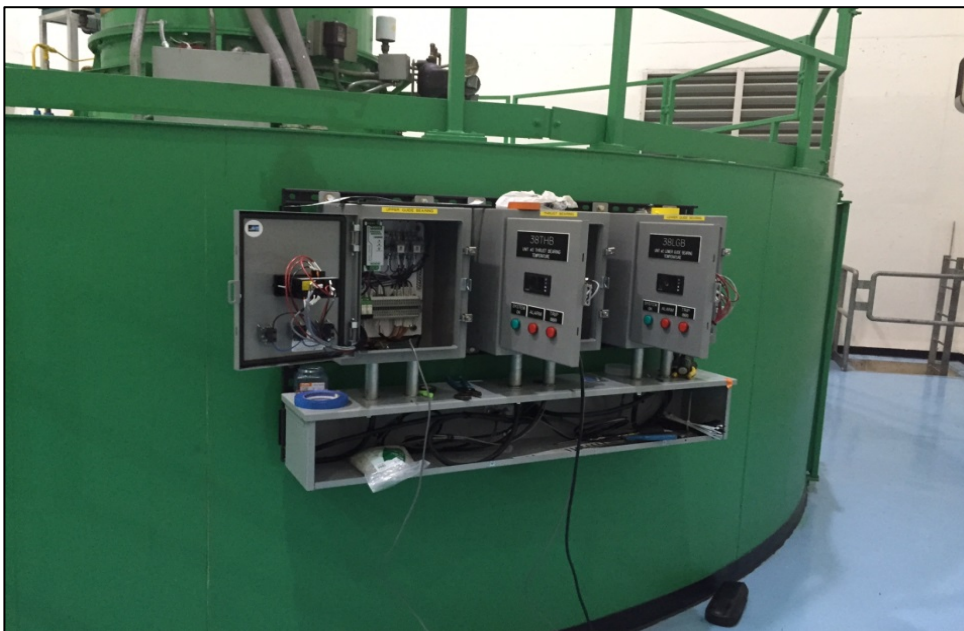


Alarm-Controls-Protection (ACP)

As previously related, this project is about doing things better in both the delivery and the water use areas of hydro production. We are making changes to the components that make up our alarm, control, and protection system. Protection devices are computers, electro-mechanical relays, digital relays, and the logic behind those relay settings that automatically reduce generation levels or shut-down generating units to prevent a potentially damaging situation. SEAPA's engineering review of the system emphasizes efficiency and reliability. Completion of this project, scheduled for the end of FY16, requires the following tasks at Tye and Swan: rewiring protective circuits, installation of new and replacement thermo-protective devices for oil reservoirs and bearings, modification of cooling water systems, and integration of these changes into the control system. At the last board meeting we highlighted work at Tye. SEAPA's contractor, Segrity, has moved on to Swan Lake. As one example of sensor integration, the lower guide bearing at Swan Lake lacked redundant RTD indication and recording. Staff prepared a concept of operation for each bearing (see sketch below). The sketch is put into practice by Segrity to design and implement a solution and then oversee installation and commissioning. The result in physical terms is shown in the photograph below. In operational terms, real time and historical data relative to operational conditions is stored in the SCADA database. Work is ongoing at Swan Lake. If all goes well, a final report should be ready by the August board meeting.



Concept sketch forms the basis of design of components and scope of work.



New RTD termination, indication, and relay inter-face panels for the upper guide, thrust, and lower guide bearing mounted on the generator air housing.

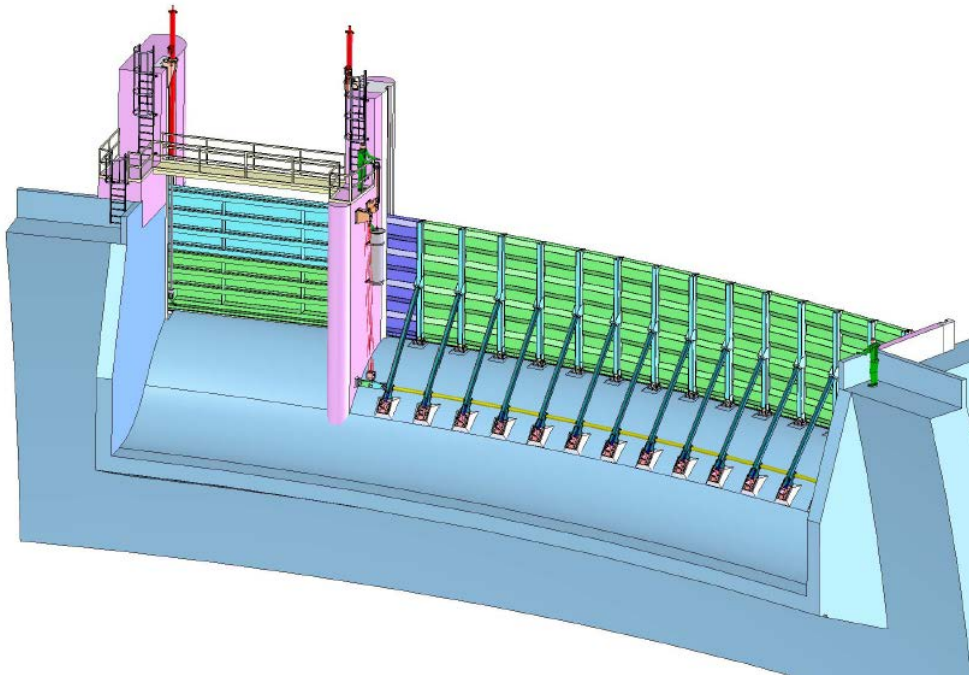
Swan Lake Reservoir Expansion Project

Project Benefit and Cost

Between 6,000 and 12,000 MWh of annual energy benefitting the entire system from a 25% increase in active storage; an annual average 7,500 MWh of weather-independent, dispatchable energy will offset ½ million gallons of diesel fuel annually. A revenue neutral (no rate increase) \$10 million expansion project of which \$3.98M will be grant funded. This project is a non-capacity amendment with little-to-no environmental impact.



Three perspectives of the Swan Lake Dam and spillway as it appears today.



This is a drawing of the Swan Lake Dam spillway after completion (looking at the Swan Lake spillway from downstream with flashboards and vertical gate installed). The spillway is 105 ft across at the crest, and 14 feet deep. The new water path will be 23 ft by 17.5 ft for the vertical gate, and 78 ft x 17.5 ft for the flashboard opening. The vertical gate is a permanent structure, the flashboards collapse by design to protect the dam on extremely large flood events.

Swan Lake Reservoir Expansion Project Contracts

Contract	Description	Award	Current Status
#1	Civil, mechanical, electrical engineering, design, and construction engineering	McMillen LLC Boise, Idaho	Staff meets weekly/bi-weekly with McMillen depending on schedules. SEAPA received McMillen's drawings and specifications in late January to include in the civil construction bid solicitation. During April final drawings and specifications for construction were produced.
#2	Flashboard system fabrication comprised of 78 lineal feet of flashboards, 17 vertical feet tall, and includes the trigger mechanisms.	Kuenz America, Inc. Graz, Austria	The flashboards are due for delivery by July 31, 2016. Kuenz submitted design calculation submittals which have been reviewed by SEAPA. Staff is in the process of final design documentation while preliminary fabrication has begun. We have also specified a four-panel fit test and a full-scale trigger test as part of the fabrication scope which will help ensure the Board of Consultants (BOC) and Federal Energy Regulatory Commission (FERC) grant approval of the 100% design.
#3	Design, fabrication, and option to install 40,000 lb. vertical gate, 23 ft. wide.	Kuenz America, Inc. Graz, Austria	The vertical gate, shipped in halves, is due for delivery by July 31, 2016. Final design is nearly complete and fabrication has begun on the vertical gate. A video/teleconference is held every week that includes SEAPA, McMillen, SEAPA's independent reviewer, Glenn Brewer, and Kuenz. To date Kuenz and SEAPA have compromised on design issues and we are happy to report that the language and time zone differences have not been detrimental.
#4	Civil Construction	Pacific Pile & Marine, L.P.	The board recently awarded this contract to the second lowest bidder, Pacific Pile & Marine, L.P. Contract conformance is in process. SEAPA staff, McMillen, and Pacific Pile met to establish the first 60 days' plan, submittals protocol, and to merge the fabrication, delivery, and installation schedules. Construction and assembly of the gates and flashboards should be complete by the end of September; commissioning should be complete by the end of October, and project close-out by the end of December 2016.

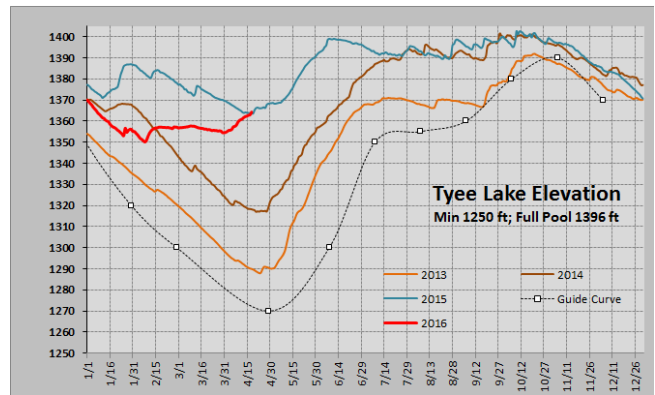
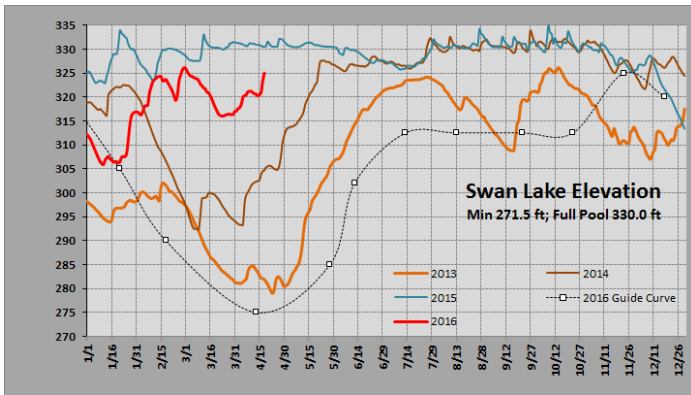
A brief synopsis:

Permitting efforts are led by Ed Schofield, and supported by Kleinschmidt's Finlay Anderson. We now have a special use permit from the Tongass National Forest (TNF). We submitted our final design documents to FERC and the TNF and they have until May 15 and June 1 respectively to reply with comments. Construction cannot start without TNF and FERC approval of the final design. As previously reported, we have solicited help from our congressional delegation to fix a 30-year surveying error to finish conveying the land around the reservoir to the Alaska Department of Natural Resources.

The construction schedule and next year's water management plan are tied at the hip since we will be modifying the spillway. We cannot spill through the spillway during construction. This means we will keep both units at Swan Lake available for generation to pass inflows. At our December Board meeting we requested and were granted a two-part Operations Plan to prevent spill at Swan Lake during construction. As part of this two-part plan, SEAPA submitted a draft document to KPU for review that would establish terms for SEAPA to request periods of decreased KPU hydro generation; this allows for Swan to generate at higher levels and thus helps us avoid using the spillway. Work in the spillway is now scheduled from mid-June through September. Below is a short status report of water levels.

Water Management Update

As shown the graphs below, both reservoirs are significantly above our maximum draft levels of this year's Operations Plan. We expect Tye and Swan to continue this trend. The plan for the Swan reservoir is to stay near elevation 320 ft. during mobilization (May-June), and then to draft a bit in front of the fall wet season. Expect Tye to fill faster than last year (less generation), and to spill more this year than last year (again less generation than last year).



Date: April 14, 2016
To: Trey Acteson, CEO
From: Ed Schofield, Power System Specialist
Subject: April 28th Board Report

Swan Lake Turbine Guide Bearing Cooling System Upgrades

Final commissioning of the new Turbine Guide Bearing (TGB) Cooling System Project was completed on March 30th and 31st. This project consisted of the purchase and installation of skid mounted, closed loop, heat exchanger cooling systems for both units at the Swan Lake Hydroelectric Project. The new closed loop cooling system provides the benefits of cooling the TGB with glycol coolant instead of raw lake water as originally constructed. The reason for the conversion for raw water cooling to a closed loop glycol system is to extend the useful life of the TGB. The TGB is constructed of mild steel and is highly subjectable to rust and corrosion from raw water cooling systems. Both Swan Lake Units have experienced a TGB failure in the past from rust corrosion of the bearing cooling water galleries. This project will eliminate corrosion issues and provide redundant cooling circuits for the TGB to enhance plant reliability.



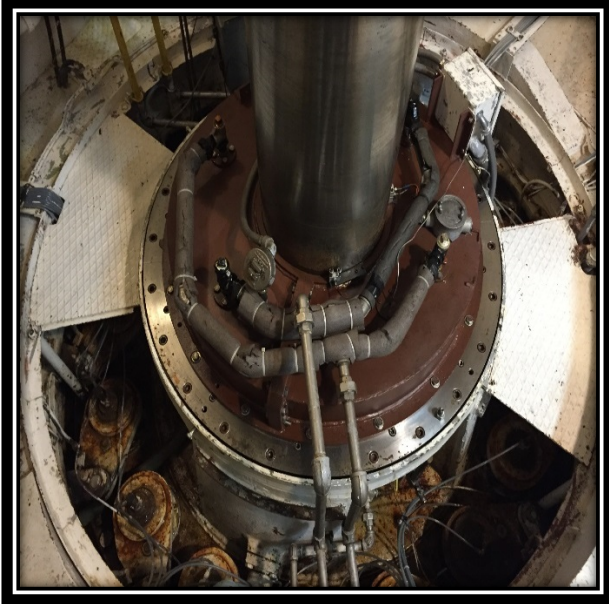
TGB Cooling System Valves



TGB Heat Exchanger & Pumps



TGB Pump Operating Control Panel



Turbine Guide Bearing

Tyee Lake Weir Project – Phase II

The Tyee Lake Weir was constructed the summer of 2014. Phase Two of the Weir Project is the filling of voids in the right-hand weir abutment. Due to high lake levels throughout the 2015 construction season, the project did not get completed in 2015. The project is now scheduled to start April 15th with a new scope of work and estimated to require five working days to complete. The contractor, BAM LLC of Ketchikan, will start mobilization of materials and tools to Tyee on April 13th. A helicopter will be assigned to the project and will arrive on site the morning of April 15th to start the transfer of materials, tools, and crew to the work site (Tyee Lake Weir).

As mentioned, there has been a change in the scope of work since first presented to the SEAPA Board in 2015. The project was originally estimated to take approximately 60 days with abutment voids to be filled with concrete. The cost for this project was approved in the FY2016 budget.

The new project scope of work is to fill abutment voids with flowable, quick-setting foam, designed and approved by the U.S. Forest Service to fill abandoned hard rock mine shafts, not concrete as originally planned. The voids will require hand excavation of woody debris and loose rock prior to placing foam. Approximately 25 yards of foam will be placed and capped with 3 inches of reinforced grout. The estimated cost of the project is now \$62,000.



Tyee Lake Weir Right Abutment 2016



Weir Downstream Leakage 2015



2015 Upstream Weir Right Abutment



Tyee Lake Outlet / Location of Weir

Swan Lake Emergency Action Plan Table Top Exercise

As part of the Federal Energy Regulatory Commission's (FERC) Hydroelectric Dam Safety Program and licensing requirements, SEAPA is required to review the project's Emergency Action Plan (EAP) annually and once every five years, conduct a functional or Table Top simulated emergency exercise involving the EAP plan holders. SEAPA requested that the functional test requirement be re-evaluated by FERC and because of the low potential impact to life and property from a Swan Lake dam failure, FERC granted the request. The goal of the Table Top Exercise is the same as a functional exercise. The difference in the two exercises is the time commitment of the participants. The goal of the Table Top Exercise is to assure that all EAP plan holders and emergency responders are familiar with the potential safety risks related to the Swan Lake Project as well as define each responder's individual roles in the event of an actual emergency response situation.

The EAP Table Top Exercise was held on March 29th at SEAPA's office. The Table Top Exercise Report is complete and is required to be submitted to FERC within 60 days after completion of the exercise.



Table Top Exercise Participants

Swan Lake 2015 Dam Safety Surveillance Monitoring Report (DSSMR)

The 2015 Swan Lake DSSMR has been completed and submitted to FERC. Included in this report are summaries of inspections, monitoring reports, and instrument readings for the 2015 calendar year in accordance with the FERC DSSMR developed in 2008. The DSSMR outlines a variety of surveillance and monitoring procedures in place at the Swan Lake Project to evaluate the conditions of the dam.



Swan Lake Dam Settlement Survey



SOUTHEAST ALASKA POWER AGENCY

Date: April 15, 2016

To: SEAPA Board of Directors

From: Trey Acteson, CEO

Re: Resolution No. 2016-064 | Revision to SEAPA's Capitalization Policy

At the September 14-15, 2015 SEAPA board meeting, Resolution No. 2016-061 was adopted updating SEAPA's capitalization policy. Since that update, it has come to our attention that a word in the section on 'Depreciation' in the policy needs to accurately reflect that SEAPA depreciates all fixed assets using the straight-line method beginning with the 'fiscal year' the asset is placed into service, rather than the 'month' it is placed into service. The attached Resolution No. 2016-064 adopts the change and revokes Resolution No. 2016-061 accordingly.

Please consider the following suggested motion:

SUGGESTED MOTION
I move to adopt Resolution No. 2016-064 adopting a Revised Capitalization Policy.



SOUTHEAST ALASKA POWER AGENCY

RESOLUTION NO. 2016-064**

The Southeast Alaska Power Agency Approving Revised Capitalization Policy

WHEREAS, on September 15, 2015, the Southeast Alaska Power Agency (SEAPA or Agency) updated the procedures for the acquisition and disposal of capital assets to benefit the Agency under Resolution No. 2016-061.

WHEREAS, the Board of Directors seek to revise the Capitalization Policy to correct a word in the section on 'Depreciation' to accurately reflect that SEAPA depreciates all fixed assets using the straight-line method beginning with the 'fiscal year' the asset is placed into service, rather than the 'month' the asset is placed into service.

NOW THEREFORE, BE IT RESOLVED that the Board of Directors hereby adopts the attached Capitalization Policy, as revised, dated April 28, 2016 in place of the previously updated Capitalization Policy dated September 15, 2015.

NOW THEREFORE, BE IT RESOLVED that the Board of Directors hereby revokes, in its entirety, Resolution No. 2016-061, and adopts the attached Capitalization Policy, as revised, establishing procedures for the acquisition and disposal of capital assets.

This Resolution No. 2016-064 was duly PASSED and ADOPTED by SEAPA's Board of Directors on the 28th day of April 2016 in Ketchikan, Alaska.

SOUTHEAST ALASKA POWER AGENCY

By _____
Chairman of the Board

ATTEST:

Secretary/Treasurer



SOUTHEAST ALASKA POWER AGENCY

CAPITALIZATION POLICY

Southeast Alaska Power Agency (SEAPA) maintains an asset capitalization policy for financial statement purposes.

Capital Assets: Capital Assets are structures, equipment and land that have a useful life of at least two years and for which costs exceed the Capitalization Threshold of \$25,000. The Capitalization Threshold generally applies to individual items, except when groups of similar items make up a significant portion of a total capital asset or when component pieces combine to form an asset that functions as a stand-alone unit. All rolling stock is capitalized, regardless of initial cost.

Capital Projects: All Capital Projects are approved by the SEAPA Board of Directors and are tracked by an assigned Renewal & Replacement number. Procedures for the acquisition of capital assets are outlined in the SEAPA Policy Handbook.

Capital Asset Expenditures: Capital Expenditures include the costs associated with the purchase or improvement of structures, equipment and land that exceed the Capitalization Threshold of \$25,000 and increase the economic value of the asset. All costs necessary to acquire an asset and make it ready for its intended use; i.e., purchase, delivery and installation, qualify as Capital Expenditures. Capital Expenditures must also increase the useful life of the asset by at least two years beyond the original useful life or increase the productive capability or capacity of the asset. Capital Asset Expenditures do not include recurring costs (expenses) that maintain an asset's operating efficiency and expected productive life, but do not add value or increase its overall life.

Asset Disposal: The process of removing assets from company services is outlined in SEAPA's Procurement Policy, Section 11. Income and expenses related to the disposal of an asset, i.e., salvage income or freight costs, are expensed as a loss/gain on the disposal of the asset.

Fixed Asset Schedule: SEAPA's Fixed Asset Schedule is updated annually at fiscal year-end. The value of Capital Assets and improvements that were placed into service during the past fiscal year are added to the schedule, and the value of assets that were disposed during that period (and their accumulated depreciation) are removed. When Capital Projects span multiple years, a major portion of a capital project may be added to the Fixed Asset Schedule when it is placed into service if it meets the capitalization threshold on its own. When groups of similar items are added to the Fixed Asset Schedule as a single Capital Project, it takes place upon completion of the entire Capital Project.

Depreciation: SEAPA depreciates all fixed assets using the straight-line method beginning with the fiscal year the asset is placed into service. SEAPA assigns useful life to assets according to its Depreciation Table, based on GAAP's estimated useful life of depreciable hydro-plant generation assets table. (Land is not a depreciable asset.) The depreciation of used equipment is assessed individually.

Date: April 13, 2016

To: Trey Acteson, Chief Executive Officer

From: Steve Henson, Operations Manager

Re: R&R269-16 Guy Thimble Replacements
Sole Source Contract to Chatham Electric

During a June 10, 2015 board meeting, staff was authorized to exercise an option under the 2013-2015 Annual Transmission Line Maintenance Contract with Chatham Electric, Inc. to extend the contract through calendar year 2016. The award to Chatham for the 2016 extension was \$524,910. At that same meeting, the board also approved capital project R&R269-16 for Guy Thimble (GT) Replacements on the Swan-Tyee Intertie Transmission Line in the amount of \$204,000. The GT project is not included in Chatham's contract. The cost estimate of \$204,000 for the GT replacements has increased to \$275,000, which is an increase of \$71,000. The \$275,000 includes \$5,000 for materials and \$270,000 for the GT replacements ($\$13,500/\text{structure} \times 20 \text{ structures} = \$270,000$). Staff recommends an increase of \$71,000 to the FY2016 R&R budget for the GT Replacement Project and a sole source contract award to Chatham Electric for the work as these replacements will be incorporated into other climbing work that will be performed by Chatham.



Guy Thimbles

To date, Chatham Electric has the most familiarity with SEAPA's power lines, has provided excellent service to the Agency, and is already fully insured and bonded for the Annual Transmission Line Maintenance Contract.

Section 8.4 of SEAPA's Procurement Policy provides that competitive bidding is not required:

When the improvements, supplies, materials, equipment, or contractual services should be purchased from a specific source

in order to prevent incompatibility with previously purchased supplies, materials, equipment or contractual services. For purposes of this subparagraph, the term "incompatibility" is defined as:

... (ii) that which causes **substantial duplication in maintenance, expertise or training** or the stocking of parts, materials, supplies, or replacements ... " (emphasis added)

Substantial duplication in maintenance, expertise, and training will occur if another contractor is tasked with the labor for replacement of these components which are necessary for ongoing reliability of the system.

Section 8.12 of the policy provides that competitive bidding is not required "Any other time the Board elects to except from the competitive bidding process any particular improvement or purchase from competitive bidding or other requirements by a majority vote".

Please consider the following suggested motion:

SUGGESTED MOTION
I move to increase the FY2016 R&R Budget by \$71,000 for Project R&R269-16 and authorize staff to enter into a sole source contract with Chatham Electric, Inc. for Guy Thimble Replacements on the Swan-Tyee Intertie Transmission Line for the not-to-exceed value of \$270,000.



SOUTHEAST ALASKA POWER AGENCY

Date: April 18, 2016
To: Trey Acteson, Chief Executive Officer
From: Steve Henson, Operations Manager
Subject: Tyee Lake Housing Roof Replacement and Siding Installation Project

A Request for Proposals for the Tyee Lake Housing Roof Replacement and Siding Installation Project was advertised on March 25, 2016. The following two (2) bids were received on April 15, 2016:

Bidder	City/State	Bid Amount
'H' Construction LLC	Palmer, Alaska	\$190,000.00
BAM LLC	Ketchikan, Alaska	\$248,000.00

An independent review was conducted and each response was evaluated based on experience with Alaska generally and Southeast Alaska in particular in carrying out similar projects, appropriateness of the proposed general approach to the work, capacity to respond to the required work in a timely and efficient manner, competitive pricing, completeness and quality of bid documents, and Roof Manufacturer's Warranty.

Although both bidders are qualified, H Construction LLC of Palmer, Alaska received the highest score and had the most comprehensive experience. \$120,770 was allocated for replacement of roofing on three structures at Tyee and installation of siding on four of the structures in SEAPA's FY16 budget (R&R No. 267-16). An additional \$70,000 is needed to fund the project if the Board elects to award to H Construction. There were no bidders local to Wrangell.

Based on the evaluation of the bids presented, staff recommends award of the Tyee Lake Housing Roof/Siding Project to H Construction LLC.

The following is a suggested motion:

SUGGESTED MOTION
I move to increase the FY2016 R&R Budget by \$70,000 for Project R&R267-16 and authorize staff to enter into a Contract with H Construction LLC for SEAPA's Tyee Lake Housing Roof Replacement and Siding Installation Project for the not-to-exceed value of \$190,000.



SOUTHEAST ALASKA POWER AGENCY

Date: April 14, 2016

To: Trey Acteson, Chief Executive Officer

From: Eric Wolfe, P.E., Director of Special Projects

Re: Swan Lake Reservoir Expansion Project / Flashboard System Modification

A modification in design and additional parts are required for the Flashboard system currently being fabricated by Kuenz America in Austria. Since the central contraction joint in the dam spillway is located close to a column/kicker bearing location, the entire flashboard system needs to be adjustable. Since the exact position of the contraction joint is not known, the modified system will need to fit a deviation of the estimated position of plus/minus 200mm in the direction from left bank to right bank. Additional parts needed for the modification include a modified column, kicker, bearing support plates, and additional panel of the size of the left panel. The majority of the request is made up of 13 1.25-inch thick column plates and 13 2.5-inch thick kicker plates. These plates were originally under SEAPA scope of supply by the construction contractor, but have been moved to Kunz to expedite the fabrication due to construction contract conformance delays.

Staff has determined that Kuenz can accomplish the modifications quicker and to the accuracy required more efficiently than a U.S. manufacturer since they are already familiar with the design and are fabricating the system. They have quoted \$49,000 U.S. Dollars for the work and materials. This modification and materials would be separate from the contract already awarded to Kuenz. Staff recommends issuing a task order to Kuenz for the modification and materials.

The cost would be paid for from the Department of Commerce Community & Economic Development (DCCED) FY15 grant funds.

Please consider the following suggested motion:

SUGGESTED MOTION
I move to authorize staff to enter into a contract with Kuenz America, Inc. for a modification and additional parts needed for the Flashboard system for SEAPA's Swan Lake Reservoir Expansion Project for the not-to-exceed value of \$49,000.



SOUTHEAST ALASKA POWER AGENCY

Date: April 18, 2016
To: Trey Acteson, Chief Executive Officer
From: Eric Wolfe, P.E., Director of Special Projects
Subject: Swan Lake Reservoir Expansion Construction Project (Load Bank)

A Request for Quotes for the lease or purchase of a 5 MW Load Bank (LB) and accompanying services was advertised on March 18, 2016. The following quotes were received on April 1, 2016:

Bidder	City/State	Offer(s)	SEAPA Option(s)
Marsh Creek, LLC	Anchorage, AK	Vendor offered three options: #1. 6-mo. lease for \$198,000 or \$33,000/mo. with the option to lease of LB after the 6-mo. period for \$28,050/mo. #2. Sale of 5000# 5 MW LB after the initial 6-mo. period for \$241,660 or, #3. Sale of 5 MW LB available for shipping September 28, 2016 for \$303,529.	Lease for 6 mos.: \$198,000 Field services: \$ 10,494 Disconnection/Shipping: \$ 31,260 TOTAL <u>\$239,754</u> Offers #2 and #3 are not options as their availability conflicts with construction schedule.
Crestchic Inc.	Glenmoore, PA	Vendor offered one option: 6-mo. lease for \$255,900 or \$42,650/mo, with the option to lease after the 6-mo. period for \$37,500/mo.	Lease for 6 mos.: \$255,900 Field services: \$ 1,340 Disconnection/Shipping: \$ 2,390 TOTAL <u>\$259,630</u>
ComRent International Inc.	Puyallup, WA	Vendor offered one option: \$303,028 or \$50,338/mo., with the option to rent after 6-mos. for \$50,338/mo.	Lease for 6 mos.: \$303,028 Field services: \$ 4,528 Disconnection/Shipping: \$ 17,028 TOTAL <u>\$324,584</u>

Each quote was evaluated on availability and delivery schedule, competitive pricing, warranty, ability to meet specifications, and completeness and quality of bid proposal documents.

Although all quotes qualified, staff recommends contracting with Marsh Creek, LLC of Anchorage, Alaska as it offers the most favorable advantage to SEAPA due to delivery assurances and pricing. The cost will be covered by the Swan Lake Reservoir Expansion Project funds.

The following is a suggested motion:

SUGGESTED MOTION
I authorize staff to enter into a lease with Marsh Creek, LLC for a 5 MW Load Bank for six months for \$198,000 and disconnection/shipping costs of \$31,260, and enter into a contract for their field services for installation oversight and guidance, operator training, and oversight of initial start-up operations for a not-to-exceed value of \$10,494 for a total cost of \$239,754 for SEAPA's Swan Lake Reservoir Expansion Project.



SEAPA 2016 BOARD MEETING DATES

Date(s)	Location	Comments
June 8-9 (Wed-Thurs)	Psg	Split Mtg: Wed 1-5/Thurs 9-2
August 25 (Thurs)	Ktn	9-5
October 12-13 (Wed-Thurs)	Wrg	Split Mtg: Wed 1-5/Fri 9-2
December 14 (Wed)	Ktn	9-5

2016																																									
January							February							March							April																				
S	M	T	W	Th	F	S	S	M	T	W	Th	F	S	S	M	T	W	Th	F	S	S	M	T	W	Th	F	S														
					1	2	1	2	3	4	5	6			1	2	3	4	5						1	2															
3	4	5	6	7	8	9	7	8	9	10	11	12	13	6	7	8	9	10	11	12	3	4	5	6	7	8	9														
10	11	12	13	14	15	16	14	15	16	17	18	19	20	13	14	15	16	17	18	19	10	11	12	13	14	15	16														
17	18	19	20	21	22	23	21	22	23	24	25	26	27	20	21	22	23	24	25	26	17	18	19	20	21	22	23														
24	25	26	27	28	29	30	28	29	27	28	29	30	31	24	25	26	27	28	29	30																					
31																																									
May							June							July							August																				
S	M	T	W	Th	F	S	S	M	T	W	Th	F	S	S	M	T	W	Th	F	S	S	M	T	W	Th	F	S														
1	2	3	4	5	6	7				1	2	3	4						1	2	1	2	3	4	5	6															
8	9	10	11	12	13	14	5	6	7	8	9	10	11	3	4	5	6	7	8	9	7	8	9	10	11	12	13														
15	16	17	18	19	20	21	12	13	14	15	16	17	18	10	11	12	13	14	15	16	14	15	16	17	18	19	20														
22	23	24	25	26	27	28	19	20	21	22	23	24	25	17	18	19	20	21	22	23	21	22	23	24	25	26	27														
29	30	31	26	27	28	29	30	24	25	26	27	28	29	30	28	29	30	31																							
														31																											
September							October							November							December																				
S	M	T	W	Th	F	S	S	M	T	W	Th	F	S	S	M	T	W	Th	F	S	S	M	T	W	Th	F	S														
					1	2	3						1			1	2	3	4	5						1	2	3													
4	5	6	7	8	9	10	2	3	4	5	6	7	8	6	7	8	9	10	11	12	4	5	6	7	8	9	10														
11	12	13	14	15	16	17	9	10	11	12	13	14	15	13	14	15	16	17	18	19	11	12	13	14	15	16	17														
18	19	20	21	22	23	24	16	17	18	19	20	21	22	20	21	22	23	24	25	26	18	19	20	21	22	23	24														
25	26	27	28	29	30	23	24	25	26	27	28	29	27	28	29	30	25	26	27	28	29	30	31																		
							30	31																																	

(See attached for additional information on 2016 meeting dates and events)

