



SOUTHEAST ALASKA POWER AGENCY

Regular Board Meeting AGENDA

The Best Western Plus Landing Hotel
Sunny Point Ball Room
Ketchikan, Alaska

December 14, 2016 | 9:00a.m. to 5:00 p.m. AKST

For Telephonic Participation: Dial 1-800-315-6338 (Access Code: 73272#)

Annual Holiday Dinner

*For all Board Members, Staff and Spouses/Significant Others will be held at the Edgewater Inn.
Hors d'oeuvres served at 6:00p.m. Dinner served at 7:00p.m.*

1. Call to Order
 - A. Roll Call
 - B. Communications/Lay on the Table Items
 - C. Disclosure of Conflicts of Interest
2. Approval of the Agenda
3. Proclamation Honoring Joe Nelson
4. Persons to be Heard
5. Review and Approve Minutes
 - A. November 1-2, 2016 Minutes of Regular Board Meeting
6. Financial Reports
 - A. CEO Financial Cover Memo
 - B. Controller's Report
 - C. kWh Graph
 - D. Grant Summary
 - E. Financial Statements – October 2016
 - F. R&R Reports
 - G. Disbursement Approvals – November 2016
 - H. Presentation and Approval of FY16 Audited Financials
(Jake Sallander of BDO will call in)
7. CEO Report
8. Staff Reports
 - A. Operations Manager Report, including Tyee & Swan Lake Reports (*Henson*)
 - B. Director of Special Projects Report (*Wolfe*)
 - C. Power Systems Specialist Report (*Schofield*)



9. Old Business
 - A. Consideration and Approval of Retirement Security Plan Prepayment (Mark Maus, Vice President of Actuarial Services at NRECA, will call in)
10. New Business
 - A. Consideration and Approval of SEAPA's Operations Plan for 2017
 - B. Consideration of Policy Regarding PTO Donation
 - C. Consideration and Approval of Resolution No. 2016-065 Regarding CEO Annual Review
 - D. Executive Session Pursuant to Agency Bylaws
 - E. Consideration and Approval of CEO Employment Contract
 - F. Approval of Rebate Disbursement
 - G. Consideration of Proposed Next Meeting Dates, February 8-9, 2017 in Petersburg
11. Director Comments
12. Adjourn



SOUTHEAST ALASKA POWER AGENCY

Minutes of Regular Meeting

November 1-2, 2016

The Nolan Center
Wrangell, Alaska

(An audio recording of this meeting is available on SEAPA's website at www.seapahydro.org)

1) Call to Order

- A. *Roll Call.* Chairman John Jensen called the meeting to order at 1:00 p.m. AKDT on November 1, 2016. The following directors and alternates were present, thus establishing a quorum of the board:

Director	Alternate	Representing	
Judy Zenge	Andy Donato	Swan Lake	Ketchikan
Joe Nelson	Mark Jensen	Swan Lake	Ketchikan
John Jensen	Cindi Lagoudakis	Tyee Lake	Petersburg
Stephen Prysunka	Clay Hammer	Tyee Lake	Petersburg
		Tyee Lake	Wrangell

The following SEAPA staff/counsel were present for all or part of the meeting:

Trey Acteson, Chief Executive Officer	Steve Henson, Operations Manager
Kay Key, Controller	Ed Schofield, Power System Specialist
Lisa Maddocks, Administrative Assistant	Shannon Barnett, Office Assistant
Joel Paisner, Ascent Law Partners, LLC	

- B. *Communications/Lay on the Table Items* – None.

- C. *Disclosure of Conflicts of Interest* – None.

2) Approval of the Agenda

➤ Motion	M/S (Nelson/Prysunka) to amend the agenda with a change to include new Item A – Review Marine Terminal Gages and Communications Project R&R249 - under New Business. All other New Business items to be shifted down respectively. Motion approved unanimously by polled vote.	Action 17-536
-----------------	--	------------------

- 3) **Persons to be Heard** – None.

4) Review and Approve Minutes

➤ Motion	M/S (Zenge/Donato) to approve the Minutes of the Regular Meeting of September 8, 2016. Motion approved unanimously by polled vote.	Action 17-537
-----------------	--	------------------

5) Financial Reports

Prior to beginning financial discussions, Mr. Acteson introduced Shannon Barnett, Office Assistant, to the Board.

(A)-(H) Mr. Acteson reported that SEAPA's financial position is sound. He mentioned that the auditors were in the office this week and the audited financials should be ready to present to the Board during our December 14th meeting. He reviewed the Agency's revenue and expenses, grants, and renewal and replacement projects; including unanticipated expenditures on the Marine Terminal Gages and Communications Project (RR249), which will be discussed further under New Business, and the Swan Lake Debris Boom Fabrication contract. He further discussed that Futaris, our satellite provider, is going out of business and that staff is actively seeking an alternative provider. He advised that a Special Board Meeting may be necessary to approve a new contract. Mr. Acteson briefly discussed the NRECA Retirement Pre-Pay Option and stated that it would be discussed further under New Business.

As a result of discussions from the last regular meeting, Mr. Acteson provided an update on the Tyee transition agreement PERS obligation language.

Following the discussion, the Chairman requested a motion on the financial statements.

➤ Motion	M/S (Prysunka/Zenge) to approve the financial statements for the months of August and September 2016. Motion approved unanimously by polled vote.	Action 17-538
-----------------	---	------------------

The meeting recessed at 1:56 p.m. and reconvened at 2:20 p.m.

➤ Motion	M/S (Zenge/Donato) to approve disbursements for the months of September and October 2016 in the amount of \$3,215,998.14. Motion approved unanimously by polled vote.	Action 17-539
-----------------	---	------------------

6) CEO Report

Mr. Acteson encouraged the Board, during this election time, to review candidate positions on energy policy issues and how they may affect our ability to serve future power needs. He provided an update on public relations activities; including the historic preservation meeting, hosting the International Rotary Russian Delegation and distribution of the 3rd Quarter Community Flyer. He discussed the best practices and process improvements, stating that staff is continuing to work on a new Health and Safety Plan for the Tyee Lake Hydro Facility and a re-write of the SEAPA Employee Handbook. Mr. Acteson closed his report with an update on the Director of Special Projects position.

7) Staff Reports

A. *Operations Manager Report (Steve Henson).*

Mr. Henson provided an update on major contracts and projects. He reported that the final Environmental Assessment on the ATV use on the Tyee Transmission System is being reviewed by the USFS and that an application for the Dredging/Road Tyee Power Plant Harbor plan has been filed and is under review in Washington, D.C. He further reported that the Satellite Communications System is ongoing and that the installation phase of the CTs-Relay Wrangell Circuit Switcher project will take place during maintenance shutdown in 2017. Mr. Henson

advised that ERM Environmental of Alaska will update the SPCC Plans for both the Tyee Lake and Swan Lake Projects and that SEAPA staff is working on the RFP to perform annual line maintenance on the transmission system. He closed with reports on Tyee Lake and Swan Lake activities.

B. Director of Special Projects Report (Eric Wolfe).

Mr. Acteson reported on behalf of Mr. Wolfe, who was not in attendance. He provided an update on the Alarm Controls Protection project, which had been delayed due to the construction at Swan Lake, advising that the final performance testing for Swan Lake was scheduled for the week of October 24th and final testing for Tyee Lake is scheduled to take place next spring. Mr. Acteson reported on the Swan Lake Reservoir Expansion Project including benefit and cost information, a historical timeline of the project and a construction update. He closed the report with a water management update which addressed questions from the last regular meeting.

C. Power System Specialist Report (Ed Schofield).

Mr. Schofield reported on FERC-related activities including the Swan Lake Reservoir Expansion Project monthly report, updating the Swan Lake Emergency Action Plan notification flow charts and the Rare and Invasive Plants Plan. He advised that FERC engineer, Justin Nettles, visited Swan Lake on September 15th for a scheduled monthly inspection. He provided an update on the Swan Lake Plunge Pool Access Security Gate, the decommissioning of the Swan Lake Load Bank and the documentation / filming of the Swan Lake project. He reported on the second phase of the Tyee Lake Outlet Weir / Abutment Void Filling project, noting that the abutments will continue to be monitored to determine the effectiveness of the fill efforts. Mr. Schofield updated the Board on the installation of a mounting bracket for the satellite dish at the Tyee Lake Intake Gate Building and the relocation of a pre-existing helicopter pad to be used for the Tyee Lake emergency shelter. He closed his report with a review of photos showing the progression of the Swan Lake Reservoir Expansion project.

The meeting recessed at 3:30pm and reconvened at 3:45pm.

8) New Business

A. Discussion Re Consideration and Approval of Increase in Budget for Marine Terminal Gages and Communications Project R&R249.

Chairman Jensen requested a motion on the item.

➤ Motion	M/S (Zenge/Prysunka) to add \$65,000 to the FY2017 R&R Budget for the Marine Terminal Gages & Communications Project R&R249. Following discussion, the motion was unanimously approved by a polled vote.	Action 17-540
-----------------	--	--------------------------

B. Consideration and Approval of Retirement Security Plan Prepayment.

Chairman Jensen requested a motion on the plan.

➤ Motion	M/S (Prysunka/Zenge) to direct staff to issue a lump-sum prepayment to NRECA's Retirement Security Plan in the approximate amount of \$445,905 to apply towards SEAPA's defined contribution plan. I further move to direct staff to amortize the payment over ten years using the straight-line	Action 17-541
-----------------	--	--------------------------

amortization method starting in FY2017. Following discussion of the plan by Mr. Acteson, the Board directed staff to obtain further information which will be discussed at the next meeting.

No vote was taken on the motion.

The meeting was recessed on November 1, 2017 at 4:34pm.

At 9:00am on November 2, 2017, Chairman Jensen came on the record to advise that one Board member was delayed and that the meeting would begin once all members were present. The meeting reconvened at 9:15am.

A roll call was taken. The same directors and alternates present during the November 1, 2017 portion of the meeting were present for the November 2, 2017 portion of the meeting, thus establishing a quorum of the board.

C. Executive Session

➤ **Motion**

M/S (Prysunka/Donato) to recess into Executive Session to conduct further discussions relating to an Annual Evaluation of SEAPA's Chief Executive Officer. The Executive Session will be conducted pursuant to SEAPA's Bylaws which are consistent with Alaska Statute 44.62.310 as the discussions may include subjects that tend to prejudice the reputation and character of any person. Motion approved unanimously by polled vote.

Action
17-542

No actions were taken on items discussed during the Executive Session.

The meeting recessed at 9:17am for the Executive Session and reconvened into the regular session at 12:30pm.

D. *Next Meeting Dates* - The Board had no objections for the next meeting date: December 14, 2017 in Ketchikan, Alaska.

9) **Director Comments** – Directors provided brief comments.

10) **Adjourn**

Chairman Jensen adjourned the meeting at 12:37p.m.

Signed:

Attest:

Secretary/Treasurer

Chairman



SOUTHEAST ALASKA POWER AGENCY CEO FINANCIAL COVER MEMO

DATE: December 8, 2016
TO: SEAPA Board of Directors
FROM: Trey Acteson, CEO

SEAPA's financial position remains strong. The financial statements in your Board packets include October FY17. The financials also include power sales graphs reflecting the most recent available data for the month of November.

AUDIT:

BDO financial auditors will join the December 14th Board meeting via telephone to present the FY16 audited financials and to answer any questions the Board may have. Copies of the "Draft" financial statements will be distributed to the Board ahead of the meeting. Upon Board approval, audited financials will be finalized and post on the SEAPA website. I am pleased to report there were no deficiencies in internal controls identified that were considered to be of material weakness. The results of BDO's tests disclosed no instances of noncompliance or other matters that are required to be reported under Government Auditing Standards.

REBATE:

Our recent audit was clean, we have been able to meet our financial obligations, and there have been no catastrophic financial events. We are in a good position financially and the Board should feel confident in approving the disbursement of the FY16 rebate under new business.

REVENUE & EXPENSES:

The budget is tracking as expected into the second quarter of FY17.

Total power purchase revenues through the end of November were \$4,675,388 actual vs. \$4,504,891 budget. Stronger than anticipated sales will likely extend into December with cooler and dryer weather.

Total administrative and operating expenses through the end of October were \$1,720,594 actual vs. \$2,048,881 budget. The bulk of this difference can be attributed to temporary deferment of transmission and plant maintenance during Swan construction.

GRANTS:

We have two remaining grants; the KPI#2 and the FY13 DCCED. Grant expenditures have been minimal since our last Board meeting.

RENEWAL & REPLACEMENT PROJECTS:

With the exception of the Swan Lake Reservoir Expansion Project, larger approved R&R project expenditures will mostly occur in the third and fourth quarters of FY17. The most notable being exciter and switchgear replacements at Swan Lake and replacement of 110 marker balls on the Tyee transmission line.



SOUTHEAST ALASKA POWER AGENCY CONTROLLER MEMO

Date: **December 5, 2016**

From: **Kay Key**

To: **Trey Acteson**

Subject: **FINANCIAL STATEMENTS**

SUGGESTED MOTION

I move to approve financial statements for the month of
October, 2016.

The following FY2017 financial reports are included in this board packet:

- **kWh Graph** (through November)
- **Grant Summary**
- **Monthly Financial Statements for October, 2016:**
 - ✓ Financial Overview
 - ✓ Fund Allocation Graph
 - ✓ Statement of Financial Position – Summary Prior Year Comparison
 - ✓ Statement of Activities – Summary Prior Year Comparison
 - ✓ Statement of Financial Position – Detail
 - ✓ Statement of Activities – Detail Budget Comparison
- **R&R Reports:**
Summary, Invoice Details, SWL Financial Summary

A new ledger account, 210401 PTO Payable, appears in the Statement of Financial Position Detail report under Other Current Liabilities. This represents all earned, but unpaid Paid Time Off. This figure had been included in 210400 Wages Payable, which now only represents payroll earned in one period (October), but paid in the next (November). The new account was created to simplify reconciliation.

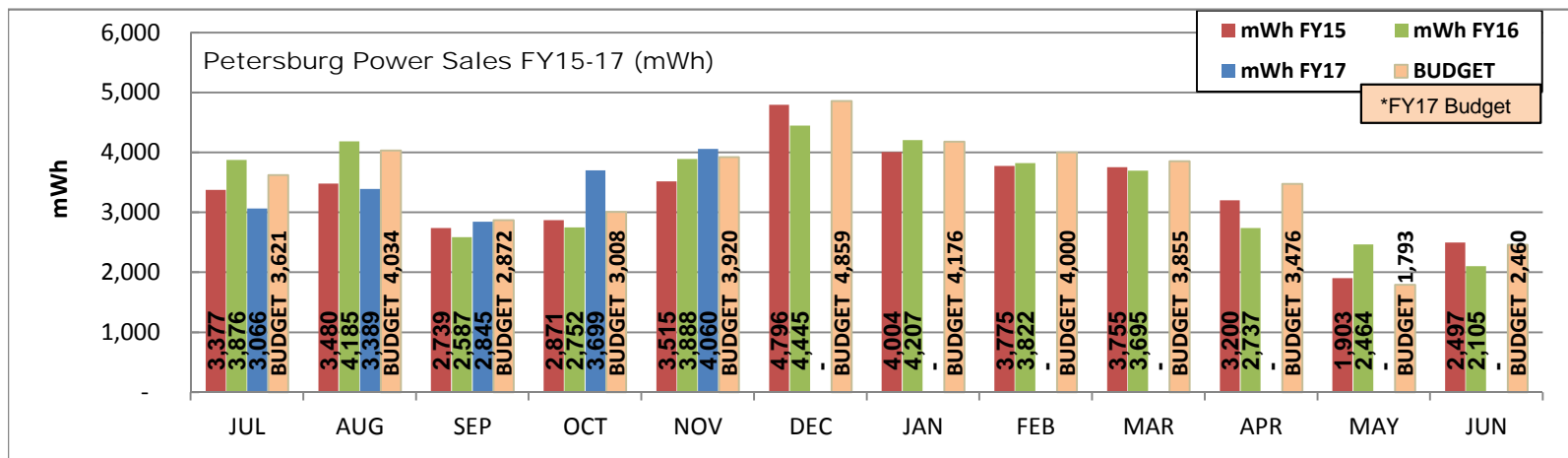
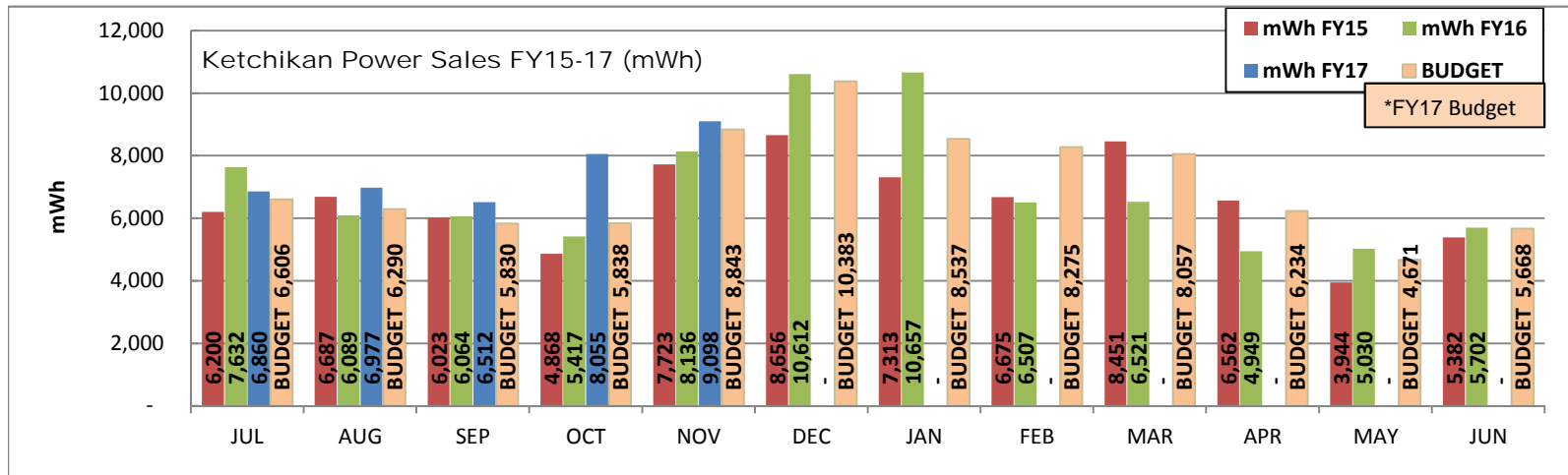
Payment for the FY15-FY17 Tyee PERS Liability was paid in October. Costs associated with FY15-16 had already been expensed in prior years, and October's payment reduced Accounts Payable. Payment for the FY17 portion reduced the Long Term Liability, PERS Unfunded Liability WRG (220121). These invoices are listed in Disbursements.

-- -- --

- **Disbursements:** A Suggested Motion for approval of November expenditures appears on the first page of the disbursements.

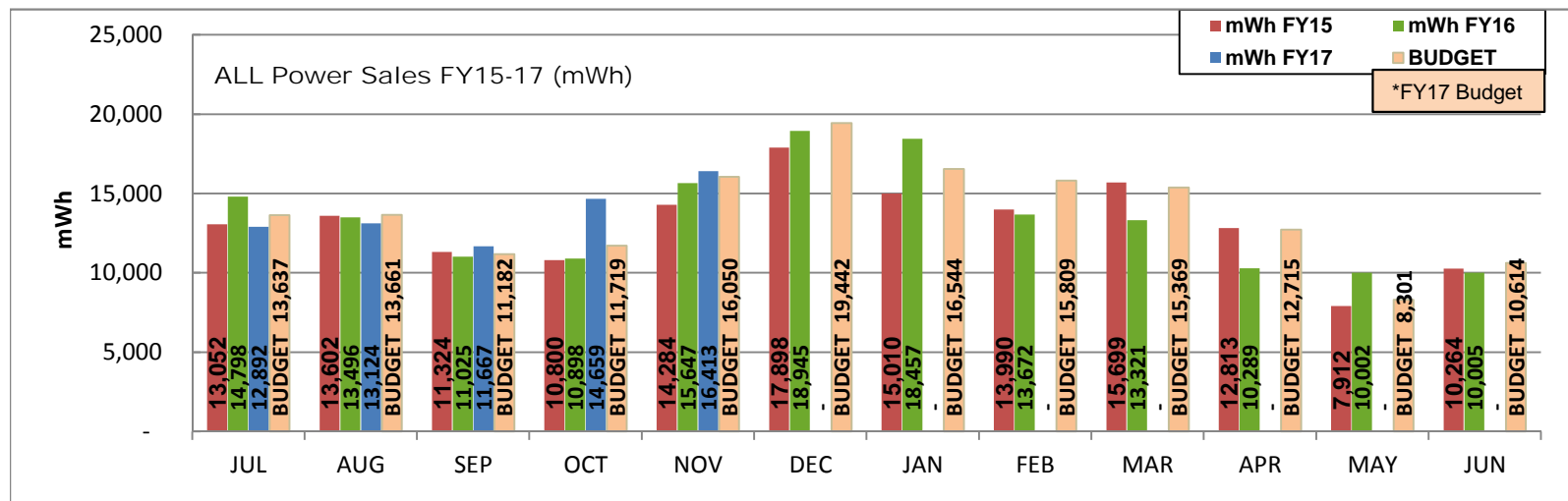
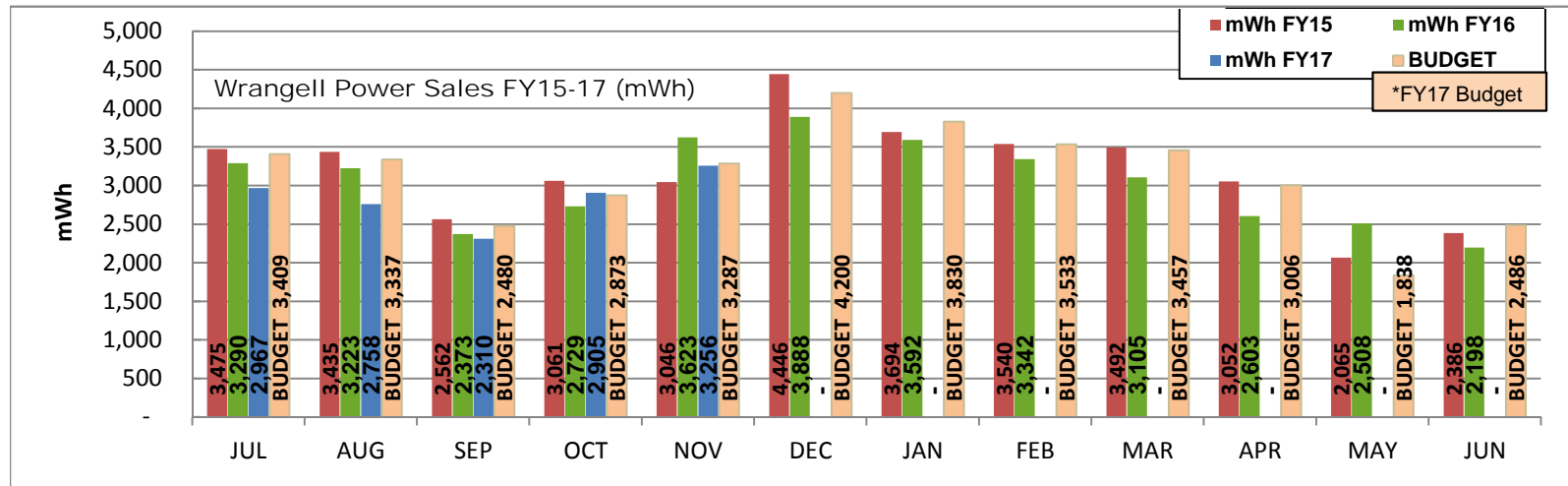
SOUTHEAST ALASKA POWER AGENCY POWER SALES

NOV 2016	FY17 kWh HYDROPOWER SALES	Current Month		Year-To-Date	
		Actual	Budget	Actual	Budget
	Ketchikan Power Purchases	9,097,568	8,842,720	37,501,728	33,407,336
	Petersburg Power Purchases	4,059,507	3,920,122	17,059,068	17,455,040
	Wrangell Power Purchases	3,255,870	3,287,143	14,194,910	15,386,026
	Total Power Purchases	16,412,945	16,049,985	68,755,706	66,248,402



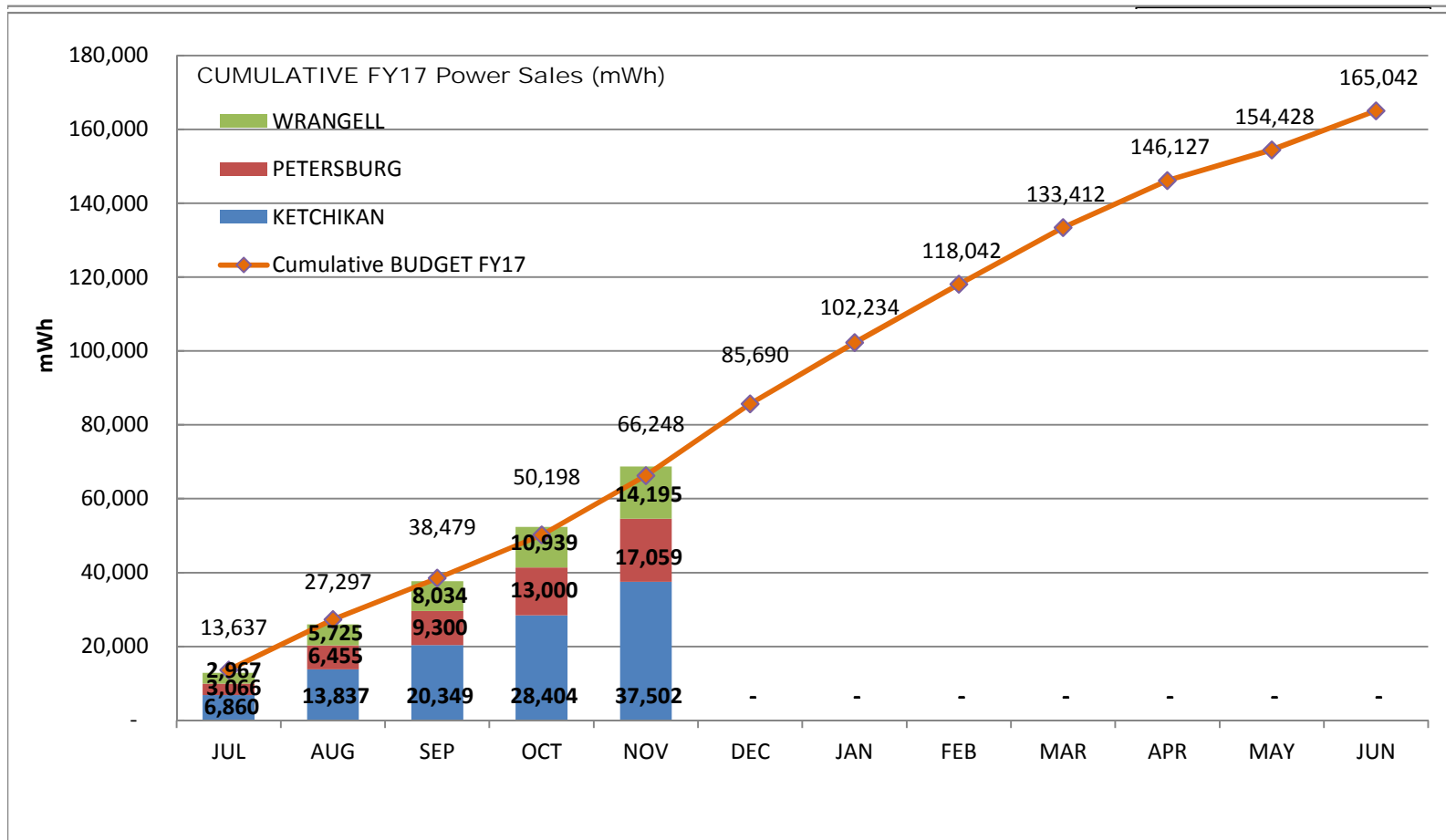
SOUTHEAST ALASKA POWER AGENCY POWER SALES

NOV 2016	FY17 kWh HYDROPOWER SALES	Current Month		Year-To-Date	
		Actual	Budget	Actual	Budget
	Ketchikan Power Purchases	9,097,568	8,842,720	37,501,728	33,407,336
	Petersburg Power Purchases	4,059,507	3,920,122	17,059,068	17,455,040
	Wrangell Power Purchases	3,255,870	3,287,143	14,194,910	15,386,026
	Total Power Purchases	16,412,945	16,049,985	68,755,706	66,248,402



**SOUTHEAST ALASKA POWER AGENCY
POWER SALES**

NOV 2016	FY17 kWh HYDROPOWER SALES	Current Month		Year-To-Date	
		Actual	Budget	Actual	Budget
	Ketchikan Power Purchases	9,097,568	8,842,720	37,501,728	33,407,336
	Petersburg Power Purchases	4,059,507	3,920,122	17,059,068	17,455,040
	Wrangell Power Purchases	3,255,870	3,287,143	14,194,910	15,386,026
	Total Power Purchases	16,412,945	16,049,985	68,755,706	66,248,402





SOUTHEAST ALASKA POWER AGENCY
FY17 GRANT SUMMARY
as of OCTOBER 31, 2016

FY13 Alaska Energy Authority Kake-Petersburg Intertie Grant #2

	<u>Grant Award</u>	<u>Expenditures</u>	<u>Balance</u>
KPI2 - EIS	32,000	3,592	28,408
KPI2 - Engineer-Design	1,743,000	-	1,743,000
KPI2 - Project Mgmt	225,000	653	224,347
TOTAL	2,000,000	4,245	1,995,755

FY13 Alaska Dept. of Commerce, Community & Economic Development

	<u>Grant Award</u>	<u>Expenditures</u>	<u>Balance</u>
1 - Hydro Storage	578,000	578,000	0
2 - G&T Site Evaluation	1,705,000	1,268,521	436,479
3 - Stability / Interconnectivity	146,000	0	146,000
4 - Load Balance Model	112,000	98	111,902
5 - Project Mgmt	309,000	255,712	53,288
6 - Business Analysis / PSA	150,000	48,015	101,985
TOTAL	3,000,000	2,150,346	849,654

TOTAL ACTIVE GRANTS	8,320,000	5,474,590	2,845,410
----------------------------	------------------	------------------	------------------



OCTOBER 2016 FINANCIAL OVERVIEW

The following tables provide a snapshot of SEAPA's revenues and expenses for OCTOBER, 2016.

OCTOBER, 2016 revenues from kWh sales were over budget:

FIRM kWh SALES	OCTOBER Actual	OCTOBER Budget	Prior Year Actual
Ketchikan	\$547,762	\$396,993	\$368,382
Petersburg	\$251,553	\$204,537	\$187,102
Wrangell	\$197,516	\$195,382	\$185,577
Total Revenue	\$996,832	\$796,912	\$741,062

Year-to-date revenues (JUL - OCT) from kWh sales are over budget:

FIRM kWh SALES	YTD Actual	YTD Budget	Prior Yr Actual
Ketchikan	\$1,931,483	\$1,670,394	\$1,713,726
Petersburg	\$883,970	\$920,374	\$911,206
Wrangell	\$743,855	\$822,725	\$789,840
Total Revenue	\$3,559,308	\$3,413,493	\$3,414,771

kWh SALES (3 years)	FISCAL YEAR	OCTOBER	YTD JUL-OCT
	2017	14,659,289	52,342,761
	2016	10,897,967	50,217,221
	2015	10,800,320	48,778,020

Administrative and operating expenses were under budget for OCTOBER.

Administrative & Operating Expenses	OCTOBER Actual	OCTOBER Budget	Prior Yr Actual
	\$435,834	\$499,096	\$413,131
	YTD Actual	YTD Budget	Prior YTD Actual
	\$1,720,594	\$2,048,881	\$1,922,100

AGENCY FUNDSOperations, Capital and Insurance Funds

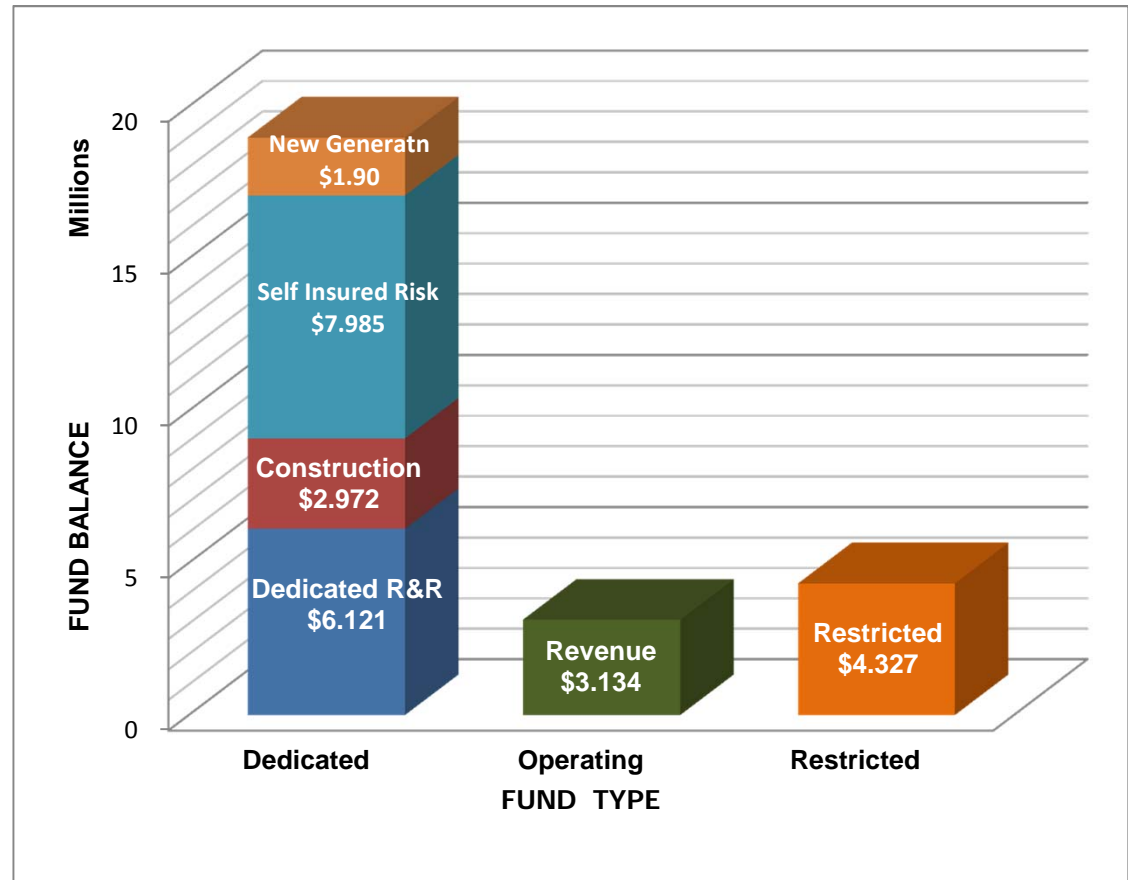
Revenue Fund FB	\$ 3,132,547
Required R&R Fund FB	1,000,256
Dedicated R&R Projects Fund FB	6,121,285
Construction Fund FB	2,972,271
Commercial FB	1,000
New Generation Fund	1,898,152
Self Insured Risk Fund FNBA	7,984,901
Total Operations, Capital and Insurance Funds	23,110,412

Trustee Funds

2009 Bond Interest	\$ 166,506
2009 Bond Principal	385,007
2009 Bond Reserve	1,410,263
2015 Bond Interest	203,206
2015 Bond Reserve	212,821
Total Trustee Funds	2,377,803

Other Restricted Funds

STI - USFS CD WF	\$ 21,624
DNR Reclamation Fund WF	927,269
Total Other Restricted Funds	948,892
Total Agency Funds	\$ 26,437,107

Dedicated Funds

New Generation = Project feasibility funding (hydro, wind, geothermal)

Self-Insured Risk = Coverage for uninsured transmission lines, submarine cables and insurance deductibles.

Construction Fund = 2015 bond proceeds dedicated to Swan Lake Reservoir Expansion project.

Dedicated R&R = Funds Replacement & Repair projects approved by the SEAPA Board in the budget.

Operating Funds

Revenue Fund & Commercial Checking: All SEAPA income is deposited to the Revenue Fund as required by Bond Indentures.

Restricted Funds (Legally or contractually restricted)

Bonds = All Trustee Funds: Bond Interest, Principal, Reserve and Escrow accounts

R&R = \$1,000,000 minimum balance required by bond indenture

DNR = Alaska DNR Reclamation Agreement

USFS = USFS Land Remediation Certificate of Deposit

SOUTHEAST ALASKA POWER AGENCY
Summary Financial Position - Prior Year Comparison
as of October 31, 2016

	OCT 31, 2016	OCT 31, 2015
ASSETS		
Current Assets		
Agency Funds		
111000 · Ops/Capital/Insurance Funds	23,110,412	27,081,925
112000 · Trustee Funds	2,377,803	2,411,435
113000 · Other Restricted Funds	948,892	873,887
Total Agency Funds	26,437,107	30,367,247
Accounts Receivable		
110000 · Accounts Receivable	1,524,527	1,024,775
110010 · Unbilled Displaced Sales	326,905	235,420
110100 · Grants Receivable	4,245	314,328
Total Accounts Receivable	1,855,677	1,574,522
Other Current Assets		
120200 · Other Receivables	4,606	4,606
120300 · Accrued Interest Receivable	21,820	36,412
120500 · Prepaid Fees	471,686	441,562
120700 · Inventory Assets	1,001,642	952,952
Total Other Current Assets	1,499,754	1,435,532
Total Current Assets	29,792,538	33,377,301
Fixed Assets		
130100 · Capital Assets	162,102,073	156,307,967
132200 · R&R Projects WIP Capital Improv	11,285,784	6,563,903
132900 · Accumulated Depreciation	(37,303,101)	(33,106,158)
Total Fixed Assets	136,084,756	129,765,712
Other Assets		
183000 · Deferred Assets	388,901	481,102
Total Other Assets	388,901	481,102
TOTAL ASSETS	166,266,195	163,624,115
LIABILITIES & EQUITY		
Liabilities		
Current Liabilities		
Accounts Payable		
210100 · Accounts Payable General	1,633,251	747,039
Total Accounts Payable	1,633,251	747,039
Other Current Liabilities		
210150 · Other Current Liabilities	12,916.68	11,642.00
210151 · Member Utility Rebate Payable	800,000	1,500,000
210152 · DNR Fund - CVEA KEA Portion	300,000	262,500
210300 · Reserve Interest Payable	341,936	372,777
210400 · Wages Payable	65,374	163,729
210401 · PTO Payable	178,588.00	0.00
210500 · Payroll Liabilities	25,598	8,912
Total Other Current Liabilities	1,724,414	2,319,560
Total Current Liabilities	3,357,664	3,066,599
Long Term Liabilities		
220100 · Series B Bonds 2009	7,160,000	7,905,000
220120 · 2009 Bond Issuance Discount	(30,507)	(34,723)
220121 · PERS Unfunded Liability WRG	1,005,501	488,768
220130 · Series 2015 Bonds	10,295,000	10,295,000
220131 · 2015 Bond Issuance Premium	913,050	972,279
Total Long Term Liabilities	19,343,044	19,626,324
Total Liabilities	22,700,708	22,692,923
Net Position		
310000 · Net Position	142,657,410	140,879,386
Net Income	908,077	51,805
Total Net Position	143,565,487	140,931,192
TOTAL LIABILITIES & NET POSITION	166,266,195	163,624,115

SOUTHEAST ALASKA POWER AGENCY
Summary Activities - Prior Year Comparison
October 2016

	OCT 2016	OCT 2015
Operating Income/Expense		
Operating Income		
410000 · Hydro Facility Revenues	996,832	741,062
Total Operating Income	996,832	741,062
Operating Expense		
535000 · Hydro Ops-Suprvsn & Engineering	4,464	110
538000 · Electric Expenses	463	873
539000 · Misc Power Generation Expense	30,938	39,367
540000 · Rents	15,432	11,214
541000 · Hydro Power Station Maintenance	1,057	6,699
543000 · Dams, Reservoirs & Waterways	-	23,616
544000 · Maintenance of Electric Plant	105,612	97,525
545000 · Plant Miscellaneous Maintenance	1,362	3,737
561000 · Control System Maintenance	-	1,568
562000 · Trans/Operations Station Exp	16,782	1,399
571000 · Trans/Maint Overhead Lines(OHL)	25,608	29,492
920000 · Admin Wages & Benefits	124,587	104,629
921000 · Office Expenses	10,344	16,761
922000 · Legislative Affairs	4,000	4,000
923000 · Contract Services	19,589	15,058
924000 · Insurance	38,333	39,572
928000 · Regulatory Commission Expense	16,126	7,089
930000 · General Expenses	14,283	4,197
931000 · Admin Rent	6,853	6,225
Total Operating Expense	435,834	413,131
Net Operating Income	560,998	327,930
Non-Operating Income/Expense		
Non-Operating Income		
941000 · Grant Income	-	232,717
942000 · Interest Income	10,107	47,421
944000 · Realized Gain/Loss	-	4,656
945000 · Unrealized Gain/Loss	(12,620)	(13,820)
Total Non-Operating Income	(2,513)	270,974
Non-Operating Expense		
952000 · Bond Interest 2009 Series	29,642	29,098
952001 · Bond Interest 2015 Series	36,052	41,280
953000 · Depreciation Expense	358,885	339,212
954000 · Grant Expenses	14,730	136,673
954100 · Contributed Capital	-	(118,805)
Total Non-Operating Expense	439,310	427,457
Net Non-Operating Income	(441,822)	(156,483)
Net Change in Financial Position	119,176	171,448

SOUTHEAST ALASKA POWER AGENCY
Statement of Financial Position - Detail
as of October 31, 2016

	Oct 31, 16
ASSETS	
Current Assets	
Agency Funds	
111000 • Ops/Capital/Insurance Funds	
111100 • Revenue Fund FB	3,132,547
111200 • Required R&R Fund FB	1,000,256
111210 • Dedicated R&R Projects Fund FB	6,121,285
111211 • Construction Fund FB	2,972,271
111300 • Commercial FB	1,000
111401 • New Generation Fund	1,898,152
111500 • Self Insured Risk Fund FNBA	7,984,901
Total 111000 • Ops/Capital/Insurance Funds	23,110,412
112000 • Trustee Funds	
112100 • WF Trust 2009 Bond Interest	166,506
112200 • WF Trust 2009 Bond Principal	385,007
112300 • WF Trust 2009 Bond Reserve	1,410,263
112501 • WF Trust 2015 Bond Interest	203,206
112503 • WF Trust 2015 Bond Reserve	212,821
Total 112000 • Trustee Funds	2,377,803
113000 • Other Restricted Funds	
113100 • STI - USFS CD WF	21,624
113500 • DNR Reclamation Fund WF	927,269
Total 113000 • Other Restricted Funds	948,892
Total Agency Funds	26,437,107
Accounts Receivable	
110000 • Accounts Receivable	1,524,527
110010 • Unbilled Displaced Sales	326,905
110100 • Grants Receivable	4,245
Total Accounts Receivable	1,855,677
Other Current Assets	
120200 • Other Receivables	4,606
120300 • Accrued Interest Receivable	21,820
120500 • Prepaid Fees	
120520 • Prepaid Insurance	407,050
120540 • Prepaid USDA FS Land Use Fees	16,198
120550 • Prepaid Admin Benefits	48,439
Total 120500 • Prepaid Fees	471,686
120700 • Inventory Assets	
120702 • Inventory - Marker Balls	111,237
1328101 • Inventory-SWL Winding Replacmnt	890,405
Total 120700 • Inventory Assets	1,001,642
Total 120000 • Other Current Assets	1,499,754
Total Current Assets	29,792,538

SOUTHEAST ALASKA POWER AGENCY
Statement of Financial Position - Detail
as of October 31, 2016

	Oct 31, 16
Fixed Assets	
130100 · Capital Assets	
130110 · Swan Lake	17,697,748
130120 · Tyee Lake	29,329,001
130130 · SEAPA Office	800,871
132100 · Swan Tyee Intertie in Operation	114,274,453
Total 130100 · Capital Assets	162,102,073
132200 · R&R Projects WIP Capital Improv	
132210 · R&R Projects - WIP Swan Lake	
1322100 · R&R WIP SWL- Reservoir Increase	
1322101 · WIP SWL Agency Permits/Environm	1,001,207
1322102 · WIP SWL Construction	4,697,477
1322103 · WIP SWL Equipment	1,108,403
1322104 · WIP SWL Engineering/Design	1,608,433
1322105 · WIP SWL Legal	68,312
1322106 · WIP SWL Project Mgmt/Professnal	341,593
Total 1322100 · R&R WIP SWL- Reservoir Increase	8,825,424
132210 · R&R Projects - WIP Swan Lake - Other	914,795
Total 132210 · R&R Projects - WIP Swan Lake	9,740,219
132220 · R&R Projects - WIP Tyee Lake	957,694
132230 · R&R Projects - WIP STI-Transmsn	587,872
Total 132200 · R&R Projects WIP Capital Improv	11,285,784
132900 · Accumulated Depreciation	(37,303,101)
Total 130000 - Fixed Assets	136,084,756
Other Assets	
183000 · Deferred Assets	
183001 · Long Term Receivable	242,499
183003 · 2009 Bond - Refunded Discount	141,636
183300 · Meterological Tower	4,766
Total 183000 · Deferred Assets	388,901
Total Other Assets	388,901
TOTAL ASSETS	166,266,195

SOUTHEAST ALASKA POWER AGENCY
Statement of Financial Position - Detail
as of October 31, 2016

	Oct 31, 16
LIABILITIES & EQUITY	
Liabilities	
Current Liabilities	
Accounts Payable	
210100 · Accounts Payable General	1,633,251
Total Accounts Payable	1,633,251
Other Current Liabilities	
210150 · Other Current Liabilities	12,916.68
210151 · Member Utility Rebate Payable	800,000
210152 · DNR Fund - CVEA KEA Portion	300,000
210300 · Reserve Interest Payable	341,936
210400 · Wages Payable	65,374
210401 · PTO Payable	178,588
210500 · Payroll Liabilities	
210521 · FICA Payable	3,738
210522 · SUI Tax Payable	216
210531 · IBEW H&W Payable	12,448
210540 · 457(b) Payable	1,669
210541 · IBEW Pension Payable	6,677
210550 · IBEW Dues Payable	851
Total 210500 · Payroll Liabilities	25,598
Total Other Current Liabilities	1,724,414
Total Current Liabilities	3,357,664
Long Term Liabilities	
220100 · Series B Bonds 2009	7,160,000
220120 · 2009 Bond Issuance Discount	(30,507)
220121 · PERS Unfunded Liability WRG	1,005,501
220130 · Series 2015 Bonds	10,295,000
220131 · 2015 Bond Issuance Premium	913,050
Total Long Term Liabilities	19,343,044
Total Liabilities	22,700,708
Net Position	
310000 · Net Position	
3100001 · Net Investment Capital Assets	114,097,678
3100002 · Restricted for Debt Service	1,590,694
3100003 · Restricted by External Agreement	948,891
3100004 · Unrestricted	26,020,147
Total 310000 · Net Position	142,657,410
Net Income	908,077
Total Net Position	143,565,487
TOTAL LIABILITIES & NET POSITION	166,266,195

SOUTHEAST ALASKA POWER AGENCY
Statement of Activities - Budget Comparison Detail
October 2016

	OCT 2016	Budget	Jul'15-Oct'16	YTD Budget	Annual Budget
Operating Income/Expense					
Operating Income					
410000 · Hydro Facility Revenues					
410100 · Ketchikan Power Purchases	547,762	396,993	1,931,483	1,670,394	5,795,787
410200 · Petersburg Power Purchases	251,553	204,537	883,970	920,374	2,861,005
410300 · Wrangell Power Purchases	197,516	195,382	743,855	822,725	2,566,056
Total 410000 · Hydro Facility Revenues	996,832	796,912	3,559,308	3,413,493	11,222,848
Total Operating Income	996,832	796,912	3,559,308	3,413,493	11,222,848
Operating Expense					
535000 · Hydro Ops-Suprvsn & Engineering					
535100 · Hyd/Ops Sup & Eng - Swan Lake	323	2,125	1,454	8,500	25,500
535150 · Hyd/Ops Sup & Eng - SWL SEAPA	110	110	2,574	4,340	5,220
535250 · Hyd/Ops Sup & Eng -TYL SEAPA	4,031	30,000	8,981	42,500	101,500
535400 · Hyd/Op Sup & Eng - Proj Drawing	-	5,000	5,413	6,500	66,750
Total 535000 · Hydro Ops-Suprvsn & Engineering	4,464	37,235	18,422	61,840	198,970
537000 · Hydraulic Expenses					
537150 · Hydraulic Expense - SWL SEAPA	-	-	-	-	4,000
537250 · Hydraulic Expense - TYL SEAPA	-	-	-	-	4,000
Total 537000 · Hydraulic Expenses	-	-	-	-	8,000
538000 · Electric Expenses					
538100 · Electric Expense - Swan Lake	289	1,400	2,721	5,600	17,000
538150 · Electric Expense - SWL SEAPA	-	2,500	-	10,000	52,500
538200 · Electric Expense - Tyee Lake	174	1,700	5,877	6,800	20,500
538250 · Electric Expense - TYL SEAPA	-	2,500	-	10,000	40,000
Total 538000 · Electric Expenses	463	8,100	8,598	32,400	130,000
539000 · Misc Power Generation Expense					
539100 · Misc Exp - Swan Lake	4,222	8,500	22,261	36,240	107,740
539150 · Misc Expense - SWL SEAPA	150	1,300	7,974	7,600	22,500
539151 · Misc Expense - SWL Communicatn	1,000	1,700	35,188	6,800	20,600
539200 · Misc Expense - Tyee Lake	9,182	7,000	29,243	30,000	90,000
539250 · Misc Expense - TYL SEAPA	9,391	4,400	20,136	17,600	54,400
539251 · Misc Expense - TYL Communicatn	6,993	8,700	27,752	34,800	105,400
Total 539000 · Misc Power Generation Expense	30,938	31,600	142,553	133,040	400,640
540000 · Rents					
540300 · FERC Land Use Fee - Swan Lake	1,667	1,713	6,228	6,288	20,000
540400 · FERC Land Use Fee - Tyee Lake	5,667	5,703	22,337	22,383	68,000
540500 · USDA Land Use Fee - USFS ROW	1,956	1,956	7,823	7,824	24,000
540600 · USDA Land Use Fee - STI	5,990	5,990	23,960	23,960	72,500
540700 · USDA Tyee Passive Reflector	108	108	430	432	1,500
540710 · USDA Etolin Burnett Radio	45	46	182	184	600
Total 540000 · Rents	15,432	15,516	60,960	61,071	186,600
541000 · Hydro Power Station Maintenance					
541100 · Maintenance - Swan Lake	433	2,250	11,145	9,000	32,000
541150 · Maintenance - SWL SEAPA	-	2,290	775	9,160	27,500
541200 · Maintenance - Tyee Lake	623	1,790	3,646	7,160	21,500
541250 · Maintenance - TYL SEAPA	-	2,290	1,365	9,160	27,500
Total 541000 · Hydro Power Station Maintenance	1,057	8,620	16,932	34,480	108,500
543000 · Dams, Reservoirs & Waterways					
543100 · Dams Res & Waterwys - Swan Lake	-	300	-	1,200	4,000
543150 · Dams Res & Waterwys - SWL SEAPA	-	-	-	-	18,000
543200 · Dams Res & Waterwys - Tyee Lake	-	-	-	-	6,500
543250 · Dams Res & Waterwys - TYL SEAPA	-	-	17,000	24,000	36,000
Total 543000 · Dams, Reservoirs & Waterways	-	300	17,000	25,200	64,500

SOUTHEAST ALASKA POWER AGENCY
Statement of Activities - Budget Comparison Detail
October 2016

	OCT 2016	Budget	Jul'15-Oct'16	YTD Budget	Annual Budget
544000 · Maintenance of Electric Plant					
544100 · Maint Electric Plant-Swan Lake	58,814	50,250	209,586	201,000	603,000
5442900 · TYL Plant Wages & Benefits					
5442911 · TYL Plant Wages/PTO	31,996	32,000	126,188	127,000	384,000
5442912 · TYL Plant Wages OT	1,783	2,500	8,522	9,000	30,000
5442920 · TYL Plant Benefit - Taxes	2,536	2,800	10,344	11,200	34,000
5442930 · TYL Plant Benefits - Insurance	7,042	7,050	28,168	28,200	86,000
5442940 · TYL Plant Benefits - Retirement	3,938	4,000	16,060	16,000	49,000
5442992 · TYL Plant Grant-Capital Payroll	(498)		(4,357)		
Total 5442900 · TYL Plant Wages & Benefits	46,798	48,350	184,926	191,400	583,000
Total 544000 · Maintenance of Electric Plant	105,612	98,600	394,511	392,400	1,186,000
545000 · Plant Miscellaneous Maintenance					
545100 · Plant Misc Maint - Swan Lake	633	2,500	4,764	11,250	31,500
545150 · Plant Misc Maint - SWL SEAPA	-	-	-	-	-
545200 · Plant Misc Maint - Tyee Lake	730	1,500	8,123	7,500	20,500
Total 545000 · Plant Miscellaneous Maintenance	1,362	4,000	12,887	18,750	52,000
561000 · Control System Maintenance					
561150 · Control System Maint. - SWL	-	2,000	1,727	7,800	45,500
561250 · Control System Maint. - TYL	-	2,000	1,799	7,800	45,500
Total 561000 · Control System Maintenance	-	4,000	3,526	15,600	91,000
562000 · Trans/Operations Station Exp					
562100 · Trans/Ops Station - Swan Lake	-	1,250	-	5,000	15,000
562200 · Trans/Ops Station - Tyee Lake	570	1,000	3,216	4,100	12,200
562250 · Trans/Ops Station-TYL SEAPA	16,212	1,850	23,920	55,400	135,200
Total 562000 · Trans/Operations Station Exp	16,782	4,100	27,137	64,500	162,400
564000 · Trans/Submarine Cable Expense					
564200 · Trans/Sub Cable Exp - Tyee Lake	-	-	1,672	-	-
Total 564000 · Trans/Submarine Cable Expense	-	-	1,672	-	-
571000 · Trans/Maint Overhead Lines(OHL)					
571100 · Trans/Maint OHL - Swan Lake	-	2,000	-	8,000	24,000
571150 · Trans/Maint OHL - SWL SEAPA	-	-	22,144	23,000	128,000
571151 · Trans/Maint OHL - SWL ROW Clear	-	-	-	-	112,000
571200 · Trans/Maint OHL - Tyee Lake	4,630	3,600	21,226	15,000	43,250
571250 · Trans/Maint OHL - TYL SEAPA	2,280	2,000	5,439	8,000	241,000
5712900 · TYL Brushing Wages & Benefits					
5712911 · TYL Brushing Wages/PTO	14,541	13,500	64,236	51,000	151,000
5712912 · TYL Brushing Wages OT	1,598	1,000	16,645	6,000	13,000
5712920 · TYL Brushing Benefit - Taxes	1,660	1,100	6,658	4,400	13,200
5712930 · TYL Brushing Benefit- Insurance	5,282	3,400	21,126	13,600	41,100
5712940 · TYL Brushing Benefit- Retirement	2,739	1,050	12,554	4,300	12,700
5712992 · TYL Brush Grant-Capital Payroll	(7,122)		(51,918)		
Total 5712900 · TYL Brushing Wages & Benefits	18,698	20,050	69,301	79,300	231,000
571300 · Trans/Maint OHL STI Maintenance	-	-	-	50,000	176,500
571500 · Trans/Maint OHL STI Therml Scan	-	-	-	-	-
571700 · Trans/Maint OH STI Clearing	-	-	7,754	10,000	150,000
571800 · Trans/Maint OHL System Events	-	6,000	-	16,000	50,000
Total 571000 · Trans/Maint Overhead Lines(OHL)	25,608	33,650	125,864	209,300	1,155,750

SOUTHEAST ALASKA POWER AGENCY
Statement of Activities - Budget Comparison Detail
October 2016

	OCT 2016	Budget	Jul'15-Oct'16	YTD Budget	Annual Budget
920000 · Admin Wages & Benefits					
9201911 · Admin Wages/PTO	75,957	74,000	310,338	298,000	886,000
9201912 · Admin Wages - Overtime	68	200	270	1,400	3,000
9201920 · Admin Benefit - Taxes	3,213	5,100	17,572	20,700	61,500
9201930 · Admin Benefit - H&W Insurance	18,149	18,150	72,597	72,600	226,000
9201940 · Admin Benefit - Retirement	27,201	26,750	107,983	107,000	321,000
9201992 · Admin Grant Payroll	-	-	(77)	-	-
Total 920000 · Admin Wages & Benefits	124,587	124,200	508,682	499,700	1,497,500
921000 · Office Expenses					
921100 · Office Supplies	264	1,250	5,456	5,000	15,000
921200 · Office Equipment	-	1,250	2,680	5,000	15,000
921300 · Phone, Courier, Internet	7,435	7,600	28,720	30,200	91,000
921400 · System Network / IT Support	2,444	4,400	12,022	17,600	53,000
921600 · Vehicle Expenses	201	400	2,589	1,400	4,000
Total 921000 · Office Expenses	10,344	14,900	51,467	59,200	178,000
922000 · Legislative Affairs	4,000	6,000	16,000	18,000	60,000
923000 · Contract Services					
923200 · Annual Financial Audit	-	-	-	-	35,000
923300 · Bank & Trustee Fees	233	250	1,119	1,050	11,600
923400 · Insurance Consultant	2,096	700	5,558	2,800	8,500
923500 · Investment Consultant	3,333	2,000	6,666	8,000	24,500
923600 · Legal Fees	8,269	15,000	35,011	60,000	180,000
923700 · Recruitment	-	1,800	1,274	7,200	22,000
923800 · Other Professional Services	5,658	7,500	12,533	30,000	90,000
Total 923000 · Contract Services	19,589	27,250	62,161	109,050	371,600
924000 · Insurance	38,333	44,000	162,051	173,850	525,850
926000 · Retiree Benefits					
926250 · Retiree Benefits TYL-PERS	-	-	-	-	40,000
Total 926000 · Retiree Benefits	-	-	-	-	40,000
928000 · Regulatory Commission Expense					
928001 · Other Regulatory Expense	9,943	400	9,943	1,450	4,650
928150 · FERC SWL Admin Fees	2,917	3,700	11,310	12,100	42,000
928151 · FERC SWL Other Expenses	600	8,500	1,040	34,000	102,000
928250 · FERC TYL Admin Fees	2,667	3,450	10,316	11,100	39,000
928251 · FERC TYL Other Expenses	-	150	-	600	2,300
Total 928000 · Regulatory Commission Expense	16,126	16,200	32,609	59,250	189,950
930000 · General Expenses					
930100 · Advertising Expense	163	300	352	1,200	4,000
930110 · Public Relations	4,803	3,500	9,906	14,000	42,500
930111 · PR - SEAPA History Project	-	1,250	4,233	5,000	15,000
930300 · Association Dues Expense	-	-	330	700	32,750
930310 · Professional Assn Dues	-	-	394	250	750
930400 · Board Meeting Expenses	250	3,000	8,407	10,000	35,000
930500 · Training Expense	2,493	2,000	9,695	7,000	25,500
930600 · Travel Expense	6,910	3,600	20,716	14,300	43,000
930700 · Non-Travel Incidental	(334)	300	(22,615)	1,300	4,000
Total 930000 · General Expenses	14,283	13,950	31,418	53,750	202,500
931000 · Admin Rent					
931010 · Office Rent	5,083	5,000	19,075	20,000	60,360
931100 · Apartment Rent - Ketchikan	1,770	1,875	7,069	7,500	22,500
Total 931000 · Admin Rent	6,853	6,875	26,144	27,500	82,860
Total Operating Expense	435,834	499,096	1,720,594	2,048,881	6,892,620
Net Operating Income	560,998	297,816	1,838,713	1,364,612	4,330,228

SOUTHEAST ALASKA POWER AGENCY
Statement of Activities - Budget Comparison Detail
October 2016

	OCT 2016	Budget	Jul'15-Oct'16	YTD Budget	Annual Budget
Nonoperating Income/Expense					
Nonoperating Income					
941000 · Grant Income	-		799,122		
942000 · Interest Income					
942100 · Misc Interest Income	802		3,383		
942200 · Investment Interest Income	9,305		28,895		
Total 942000 · Interest Income	10,107		32,278		
944000 · Realized Gain/Loss					
944200 · Realized Gain/Loss on Invest	-		8,949		
Total 944000 · Realized Gain/Loss	-		8,949		
945000 · Unrealized Gain/Loss					
945200 · Unrealized Gain/Loss Investment	(12,620)		(45,887)		
Total 945000 · Unrealized Gain/Loss	(12,620)		(45,887)		
Total Nonoperating Income	(2,513)		794,462		
Nonoperating Expense					
952000 · Bond Interest 2009 Series	29,642		118,569		
952001 · Bond Interest 2015 Series	36,052		144,210		
953000 · Depreciation Expense	358,885		1,435,538		
954000 · Grant Expenses					
954001 · Grant Construction	-		173,486		
954002 · Grant Contractual	14,730		65,905		
954003 · Grant Equipment	-		582,192		
954004 · Grant Labor & Benefits	-		77		
954006 · Grant Materials & Supplies	-		-		
Total 954000 · Grant Expenses	14,730		821,659		
954100 · Contributed Capital	-		(794,877)		
Total Nonoperating Expense	439,310		1,725,099		
Net Nonoperating Income	(441,822)		(930,637)		
Net Income	119,176	297,816	908,077	1,364,612	4,330,228

Southeast Alaska Power Agency R&R CAPITAL PROJECTS	FY2017		WIP CAPITAL PROJECTS October 31, 2016	FY13	FY14	FY15	FY16	FY17	TOTAL	Overall BUDGET
	Budget	Expenditures								
242-13 Reservoir Expansion SWL	\$ 6,820,253	4,342,533		421,782	394,811	525,020	2,989,858	4,342,533	8,674,003	11,115,568
Grant Funding	\$ (2,991,308)	(851,519)		(6,392)	(245,260)	(516,577)	(2,280,897)	(851,519)	(3,900,646)	(3,898,000)
Construction Fund	\$ (6,000,000)	(3,050,321)					(112,342)	(3,050,321)	(3,162,663)	(6,004,500)
231-13 Helicopter Pads	\$ 500,000	526,822	Installation complete Jul 2016.	57,731	98,391	533,783	2,181,644	526,822	3,398,371	3,403,165
232-13 Communications Upgrade	\$ 83,000	3,658	Tyee satellite installation	12,160	186,520	15,995	165,667	3,658	383,999	520,100
240-13 Cooling Water TYL	\$ 37,260	612	Controls being integrated.	26,600	67,566	1,250	62,024	612	158,051	199,700
241-13 Stream Gauge TYL	\$ 200,000	42,764	Phase 2 abutment sealing done	37,845	562,635	22,753	106,528	42,764	772,525	1,467,758
248-14 Lathe TYL	\$ -	1,218	IN-SERVICE OCT 2016	230	16,593	(16,823)	41,441	1,218	42,659	42,000
249-14 Marine Term Gage/CommTYL	\$ 65,000	30,780	Radio programming ongoing		-	126,111	161,353	30,780	318,243	245,000
252-14 Submarine SpliceSpareTYL	\$ 213,000	-	Existing kits evaluated.		-	-	-	-	-	213,000
256-15 Alarm Trip Protectn SWL-TYL	\$ 53,011	37,538	Underway; completion FY17.			611	157,765	37,538	195,914	222,000
258-15 System Control Improve SWL-TY	\$ 38,843	3,285	Project underway.			28,766	44,194	3,285	76,245	116,800
259-15 Turbine Shutoff Valves TYL	\$ 35,000	-	Partially installed.			84,857	170,774	-	255,631	290,630
260-15 Exciters SWL	\$ 415,751	3,081	Exciters on site.			10,104	374,052	3,081	387,237	799,000
261-15 Generator Switch Gear SWL	\$ 484,743	3,081	Equipment delivered.			9,773	388,390	3,081	401,244	882,000
263-16 CTs-Relay CircSwitcr WRG	\$ 165,000	1,439	Electrical design underway.				20,963	1,439	22,402	201,000
265-16 Marker Balls OHL TYL	\$ 600,596	164	Contract awarded.				-	164	164	600,596
267-16 Roof-Siding Housing TYL	\$ 188,787	194,275	COMPLETE JUL 2016				1,453	194,275	195,728	120,770
269-16 Guy Thimbles STI	\$ 270,000	-	Rescheduled to FY17.				-	-	-	270,000
270-16 Dampeners OHL TYL	\$ 99,900	-	Rescheduled to FY17.				8,696	-	8,696	99,900
271-16 Substation Upgrade WRG	\$ 45,025	14,412	Work underway Aug 2016.				30,613	14,412	45,025	45,025
272-17 Needle Assembly TYL	\$ 123,000	-	Repair needle position feedbk						-	123,000
273-17 XFMR Bushing TYL	\$ 70,000	-	Transformer bushing repair.						-	70,000
274-17 Emission Valve Pipe SWL	\$ 35,000	-	Repair corroding pipe.						-	35,000
275-17 Manifold TYL	\$ 38,700	-	Manifold on governor.						-	38,700
276-17 Schweitzer RTAC SWL-TYL	\$ 33,500	-	Replace relays with RTACs						-	33,500
277-17 Debris Boom SWL	\$ 284,000	10,262	Contract award-Worthington						10,262	584,200
Total WIP R&R Capital Projects	\$4,079,116	\$873,391		\$134,565	\$931,704	\$817,180	\$3,915,556	\$863,129	\$6,672,396	\$10,622,844
Totals INCLUDING 242-13 SWL	\$ 10,899,369	\$5,215,924		\$556,347	\$1,326,515	\$1,342,200	\$6,905,414	\$5,205,662	\$15,346,399	\$21,738,412

Date	Num	Vendor	FY17 BUDGET \$	Expenditures	Description
231-13 Helicopter Pads			\$500,000	-	Helipad installation on the intertie and replacement of pads on Swan and Tyee lines. Prototype installed on the STI in November 2013. PND's helipad design approved by USFS in Dec 2014. Helipads manufactured by Touchdown Enterprises; installation began summer of 2015 (50 of 105 helipads installed) and was completed Jul 2016.
	\$ 57,731	FY13 Expenditures			
	\$ 98,391	FY14 Expenditures			
	\$ (114,921)	FY14 Capitalize Prototypes			
	\$ 533,783	FY15 Expenditures			
	\$ 2,181,644	FY16 Capitalized Installed Helipads			
	\$ (2,695,579)	FY16 Capitalized Installed Helipads			
	\$ 526,822	FY17 Expenditures			Project Management: Tongass Engineering (S.Henson)
07/01/16	1836	Ward Cove Industries LLC		1,125	Manufacturing: Touchdown Enterprises
07/09/16	TO15111-5	BAM LLC		351,600	Installation: BAM LLC
07/22/16	51078038	Tetra Tech Inc		448	FY14 CAPITALIZED \$114,921 (Prototypes)
07/31/16	1320133	Tongass Engineering		23,665	FY16 CAPITALIZED \$2,695,579 Installed Helipads
08/01/16	1865	Ward Cove Industries LLC		1,125	Carroll Inlet to Shrimp Bay
08/12/16	TO15111-6	BAM LLC		145,350	Shrimp Bay to Bradfield Canal
08/26/16	51089674	Tetra Tech Inc		2,383	
09/01/16	1888	Ward Cove Industries LLC		1,125	Completion pending final report from Project Mgmt.
Total 231-13 Helicopter Pads				587,872	
232-13 Communications Upgrade			\$83,000	-	Satellite dishes and telephone systems installed at Swan Lake and SEAPA Office in December 2013. Tyee Lake satellite dish permitting approved by ADF&G and Corp of Engineers; DNR approval received Sep 2015. Equipment and fiber installed at Tyee. (S.Henson)
	\$ 12,160	FY13 Expenditures			
	\$ 186,520	FY14 Expenditures			
	\$ (177,163)	FY14 Capitalize SWL-SEA Office			
	\$ 15,995	FY15 Expenditures			
	\$ 165,667	FY16 Expenditures			CAPITALIZED SWL-SEAPA Office \$177,163
	\$ 3,658	FY17 Expenditures			
07/31/16	533	Tyee Plant Payroll		2,103	
08/26/16	9208922931	Grainger		765	
09/12/16		Safeway KTN		51	
09/30/16	52665	Sunrise Aviation Inc		240	
10/31/16	551	Payroll		498	
Total 232-13 Communications Upgrade				206,837	
240-13 Cooling Water TYL			\$37,260	-	Piping installation complete. Valves and control work remain and will be coordinated with System Control Improvements (RR258-15). Completion scheduled for CY16. (E.Wolfe)
	\$ 26,600	FY13 Expenditures			
	\$ 67,566	FY14 Expenditures			
	\$ (94,165)	FY14 Pipe Install Capitalized			
	\$ 1,250	FY15 Expenditures			CAPITALIZED PIPE INSTALLATION \$94,165
	\$ 62,024	FY16 Expenditures			
	\$ 612	FY17 Expenditures			
08/31/16	538			612	
Total 240-13 Cooling Water TYL				63,886	
241-13 Stream Gauge TYL			\$200,000	-	Logs cleared July 2013. Weir construction completed and helipad placed by Sep 2013. Grout work completed Apr 2016. Additional grout work, emergency shelter, stream gage and power network installation initiated in Sep 2016. (E.Schofield)
	\$ 37,845	FY13 Expenditures			
	\$ 562,635	FY14 Expenditures			
	\$ (598,332)	FY14 Weir & Helipad Capitalized			
	\$ 22,753	FY15 Expenditures			
	\$ 106,528	FY16 Expenditures			
	\$ 42,764	FY17 Expenditures			FY14 CAPITALIZED WEIR & HELIPAD \$598,332
07/12/16	80682	Futaris Inc		1,086	
07/25/16	16082	Foam Concepts LLC		7,341	
08/01/16	S246WRA01N	Samson Tug & Barge		449	
08/29/16	20630	Petro Marine Services-WRG		931	
08/29/16	20657	Petro Marine Services-WRG		124	
09/12/16		Safeway KTN		102	
09/19/16	TO17019-1	BAM LLC		32,250	
09/30/16	52665	Sunrise Aviation Inc		480	
Total 241-13 Stream Gauge TYL				174,193	

Date	Num	Vendor	FY17 BUDGET \$	Expenditures	Description
242-13 Reservoir Expansion SWL			\$6,820,253		Refer to report from Director of Special Projects. (E.Wolfe / E.Schofield)
	\$ 151,421	FY12 Expenditures			
	\$ 421,782	FY13 Expenditures			
	\$ 394,811	FY14 Expenditures			
	\$ 525,020	FY15 Expenditures			
	\$ 2,989,858	FY16 Expenditures			
	\$ 4,342,533	FY17 Expenditures			
07/31/15	MAD4548-201507	"Bank of America		425	
07/31/15	WOL7101-201507	"Bank of America		149	
07/31/15	1514	Ascent Law Partners LLP		2,940	
08/09/15	5206	McMillen LLC		53,613	
08/19/15	1428	Miscellaneous Cash		(7)	
08/19/15	31550	Taquan Air		1,667	
08/20/15	227076	Best Western Landing Hotel		320	
08/28/15	121715	Van Ness Feldman PC		5,610	
08/31/15	1576	Ascent Law Partners LLP		2,835	
08/31/15	MAD4548-201508	"Bank of America		171	
08/31/15	WOL0389-201508	"Bank of America		114	
08/31/15	KDR201508	de Rubertis, Kim		6,774	
08/31/15	122120	Van Ness Feldman PC		1,367	
09/06/15	5294	McMillen LLC		90,926	
09/09/15	201508165	Kleinschmidt Associates Inc.		4,947	
09/15/15	1509S	Glenn Brewer Consulting Engineer		7,206	
09/17/15	90542894	Hatch Associates Consultants, Inc		6,228	
09/18/15	3305048	Daily Journal of Commerce		95	
09/25/15	90544837	Hatch Associates Consultants, Inc		5,004	
09/25/15	50967286	Tetra Tech Inc		5,810	
09/25/15	201509136	Kleinschmidt Associates Inc.		3,502	
09/27/15	101372120	Alaska Dispatch News		87	
09/30/15	ACT2263-201509	"Bank of America		410	
09/30/15	1638	Ascent Law Partners LLP		455	
10/04/15	5386	McMillen LLC		51,660	
10/15/15	4	Kollgaard Eric		450	
10/23/15	50981339	Tetra Tech Inc		695	
10/28/15	31700	Ketchikan Daily News		76	
10/30/15	329983	Daily Journal of Commerce		79	
10/30/15	201510145	Kleinschmidt Associates Inc.		1,436	
10/31/15	MKC201510	Morris Kepler Consulting LLC		3,280	
10/31/15	WOL0389-201510	"Bank of America		72	
10/31/15	5460	McMillen LLC		61,058	
11/20/15	90552730	Hatch Associates Consultants, Inc		4,445	
11/27/15	201511144	Kleinschmidt Associates Inc.		1,311	
11/30/15	WOL201511	.Wolfe, Eric		30	
11/30/15	1714	Ascent Law Partners LLP		1,960	
11/30/15	MAD4548-201511	"Bank of America		480	
11/30/15	WOL0389-201511	"Bank of America		1,012	
12/01/15	50991051	Tetra Tech Inc		551	
12/01/15	5536	McMillen LLC		64,291	
12/08/15	461	PML Environmental		1,360	
12/16/15	603704	BDO USA LLP		1,800	
12/25/15	51004272	Tetra Tech Inc		257	
12/31/15	MKC201512	Morris Kepler Consulting LLC		1,148	
12/31/15	MKC201512	Morris Kepler Consulting LLC		3,367	
12/31/15	1512S	Glenn Brewer Consulting Engineer		400	
12/31/15	1512S2	Glenn Brewer Consulting Engineer		4,037	
12/31/15	1771	Ascent Law Partners LLP		2,520	
12/31/15	WOL0389-201512	"Bank of America		254	

Southeast Alaska Power Agency
WORK-IN-PROGRESS R&R Capital Projects as of Oct 31, 2016

Date	Num	Vendor	FY17 BUDGET \$	Expenditures	Description
12/31/15	14271801	R&M Engineering-Ketchikan		540	
01/01/16	BF100522T0033	USDA Forest Service		200	
01/05/16	201512120	Kleinschmidt Associates Inc.		2,066	
01/11/16	463	PML Environmental		720	
01/27/16	51010961	Tetra Tech Inc		354	
01/28/16	5619	McMillen LLC		28,800	
01/28/16	160152	Glenn Brewer Consulting Engineer		2,600	
01/28/16	32010	Ketchikan Daily News		147	
01/30/16	2205	Kuenz America Inc		46,267	
01/30/16	2205	Kuenz America Inc		46,260	
01/31/16	1803	Ascent Law Partners LLP		14,840	
02/01/16	3309273	Daily Journal of Commerce		112	
02/03/16	60667	Wrangell Sentinel		155	
02/07/16	5706	McMillen LLC		67,951	
02/08/16	201601249	Kleinschmidt Associates Inc.		2,852	
02/12/16	52530	Sunrise Aviation Inc		830	
02/12/16	324881	Taquan Air		467	
02/26/16	201602173	Kleinschmidt Associates Inc.		987	
02/28/16	1379527	Alaska Dispatch News		132	
02/29/16	160252	Glenn Brewer Consulting Engineer		10,300	
02/29/16	160229	Morris Publishing Group		436	
02/29/16	60767	Pilot Publishing, Inc.		189	
02/29/16	1846	Ascent Law Partners LLP		2,065	
03/06/16	2232	Kuenz America Inc		4,020	
03/06/16	2232	Kuenz America Inc		34,956	
03/06/16	5761	McMillen LLC		35,567	
03/15/16	746630	Tongass Business Center		48	
03/19/16	FS201603	Frontier Shipping & Copyworks		2,360	
03/22/16	3311195	Daily Journal of Commerce		68	
03/25/16	201603214	Kleinschmidt Associates Inc.		293	
03/29/16	A40002337	Dodge Data & Analytics		303	
03/29/16	A40002338	Dodge Data & Analytics		265	
03/29/16	33243	Taquan Air		935	
03/31/16	1603S	Glenn Brewer Consulting Engineer		3,600	
03/31/16	1603S2	Glenn Brewer Consulting Engineer		5,500	
03/31/16	1886	Ascent Law Partners LLP		3,150	
03/31/16	KDR201603	de Rubertis, Kim		1,600	
03/31/16	THO9358-201603	"Bank of America		423	
03/31/16	THO9358-201603	"Bank of America		618	
04/03/16	5812A	McMillen LLC		24,392	
04/03/16	5812A	McMillen LLC		1,843	
04/03/16	5812	McMillen LLC		2,645	
04/03/16	2263	Kuenz America Inc		3,060	
04/03/16	2263	Kuenz America Inc		19,110	
04/29/16	201604201	Kleinschmidt Associates Inc.		73	
04/30/16	1928	Ascent Law Partners LLP		7,105	
04/30/16	MAD4548-201604	"Bank of America		9,503	
04/30/16	ACT3225-201604	"Bank of America		204	
04/30/16	WOL0389-201604	"Bank of America		739	
04/30/16	1604S1	Glenn Brewer Consulting Engineer		400	
04/30/16	1604S2	Glenn Brewer Consulting Engineer		7,600	
04/30/16	5876	McMillen LLC		32,044	
05/01/16	14271801	R&M Engineering-Ketchikan		(540)	
05/15/16	PST1	Pacific Pile and Marine		1,245,000	
05/17/16	16007	Crestchic, Inc.		42,650	
05/17/16	2016268	Box-It LLC		730	
05/18/16	WOL201605	.Wolfe, Eric		72	

Southeast Alaska Power Agency
WORK-IN-PROGRESS R&R Capital Projects as of Oct 31, 2016

Date	Num	Vendor	FY17 BUDGET \$	Expenditures	Description
05/18/16	34544	Taquan Air		467	
05/19/16	34587	Taquan Air		467	
05/25/16	KDN20160525	Ketchikan Daily News		137	
05/25/16	4189	Sign Pro		81	
05/27/16	16051333	Alaska Broadcast Communications,		8	
05/27/16	16051334	Alaska Broadcast Communications,		8	
05/27/16	201605125	Kleinschmidt Associates Inc.		110	
05/31/16	509	Payroll		4,181	
05/31/16	LOO6068-201605	"Bank of America		609	
05/31/16	MAD4548-201605	"Bank of America		1,960	
05/31/16	SCH3058-201605	"Bank of America		141	
05/31/16	WOL0389-201605	"Bank of America		1,362	
05/31/16	623478	Anderes Oil		1,349	
05/31/16	2316	Kuenz America Inc		86,770	
05/31/16	5950	McMillen LLC		2,700	
05/31/16	5950	McMillen LLC		9,981	
05/31/16	9880	Electric Power Systems Inc.		1,053	
05/31/16	9929	Electric Power Constructors		20,213	
06/01/16	241298	Best Western Landing Hotel		237	
06/01/16	516751	Seaborne Marine Services JV		4,500	
06/01/16	34405	Taquan Air		935	
06/01/16	LI0U2016	Liou, Jim C.P.		9,800	
06/01/16	160551	Glenn Brewer Consulting Engineer		300	
06/01/16	160552	Glenn Brewer Consulting Engineer		600	
06/04/16	2348	Kuenz America Inc		6,600	
06/04/16	2348	Kuenz America Inc		7,392	
06/06/16	16013	Crestchic, Inc.		1,340	
06/06/16	35073	Taquan Air		467	
06/06/16	2314	Kuenz America Inc		2,160	
06/06/16	2314	Kuenz America Inc		17,568	
06/06/16	16012	Crestchic, Inc.		42,650	
06/07/16	158	Best Western Landing Hotel		199	
06/09/16	467	PML Environmental		1,841	
06/10/16	2319	Kuenz America Inc		86,770	
06/10/16	92934	Pacific Airways Inc		880	
06/11/16	92935	Pacific Airways Inc		400	
06/12/16	201628	Doyon's Landing LLC		1,200	
06/12/16	92936	Pacific Airways Inc		440	
06/15/16	PST02	Pacific Pile and Marine		463,750	
06/16/16	616773	Seaborne Marine Services JV		2,250	
06/17/16	2016342	Box-It LLC		300	
06/18/16	KDN20160618	Ketchikan Daily News		137	
06/21/16	35628	Taquan Air		935	
06/23/16	292	Best Western Landing Hotel		203	
06/23/16	6662	Misty Fjords Air & Outfitting LLC		657	
06/23/16	6666	Misty Fjords Air & Outfitting LLC		657	
06/24/16	9870	Electric Power Systems Inc.		14,660	
06/24/16	319485	Timber & Marine Supply Inc		240	
06/24/16	26867	CoastAlaska, Inc.		450	
06/24/16	201606257	Kleinschmidt Associates Inc.		439	
06/26/16	16061348	Alaska Broadcast Communications,		30	
06/26/16	16061349	Alaska Broadcast Communications,		30	
06/26/16	6000	McMillen LLC		400	
06/26/16	6000	McMillen LLC		25,306	
06/28/16	93316	Pacific Airways Inc		440	
06/29/16	616781	Seaborne Marine Services JV		4,500	
06/30/16	WOL201606	.Wolfe, Eric		125	

Date	Num	Vendor	FY17 BUDGET \$	Expenditures	Description
06/30/16	514	SEAPA Payroll		6,652	
06/30/16	634737	Anderes Oil		3,407	
06/30/16	384	Best Western Landing Hotel		203	
06/30/16	1606S2	Glenn Brewer Consulting Engineer		1,600	
06/30/16	93371	Pacific Airways Inc		293	
06/30/16	93371	Pacific Airways Inc		293	
06/30/16	472	PML Environmental		1,440	
06/30/16	SCH3058-201606	"Bank of America		93	
06/30/16	LOO6068-201606	"Bank of America		627	
06/30/16	509	Best Western Landing Hotel		247	
06/30/16	162109	R&M Engineering-Ketchikan		1,288	
06/30/16	514	SEAPA Payroll		6,219	
06/30/16	524	KPU Linemen Payroll		5,830	
07/01/16	16015	Crestchic, Inc.		15,638	
07/01/16	16270700	R&M Engineering-Ketchikan		4,989	
07/01/16	6000A	McMillen LLC		(2,226)	
07/05/16	35951	Taquan Air		935	
07/05/16		Safeway KTN		169	
07/07/16	93555	Pacific Airways Inc		880	
07/07/16	467	Best Western Landing Hotel		203	
07/07/16		KGB Airport		20	
07/09/16		KGB Airport		20	
07/10/16	36205	Taquan Air		935	
07/13/16		KGB Airport		20	
07/13/16	KDN20160713	Ketchikan Daily News		137	
07/14/16	526	Best Western Landing Hotel		150	
07/14/16	93788	Pacific Airways Inc		293	
07/14/16	93788	Pacific Airways Inc		293	
07/14/16	93788	Pacific Airways Inc		293	
07/15/16		Alaskan & Proud Mkt KTN		200	
07/15/16		Safeway KTN		41	
07/15/16		KGB Airport		32	
07/15/16	PST03	Pacific Pile and Marine		578,328	
07/16/16		Safeway KTN		140	
07/18/16		KGB Airport		26	
07/19/16	36519	Taquan Air		876	
07/20/16		Safeway KTN		30	
07/20/16		Safeway KTN		72	
07/20/16		KGB Airport		20	
07/20/16		Safeway KTN		162	
07/21/16	36584	Taquan Air		219	
07/21/16	36584	Taquan Air		219	
07/21/16		KGB Airport		20	
07/21/16	474	PML Environmental		71	
07/21/16	474	PML Environmental		945	
07/21/16	233723	Yanke Machine Shop		41,697	
07/23/16		Safeway KTN		82	
07/25/16	1028551	Madison Lumber & Hardware Inc		31	
07/25/16	93985	Pacific Airways Inc		880	
07/25/16		Safeway KTN		60	
07/26/16	2016287	Doyon's Landing LLC		1,200	
07/26/16	94034	Pacific Airways Inc		880	
07/27/16	INV2878	ABQ Industrial LP		2,702	
07/27/16	T40283	Tyler Rental, Inc.		1,154	
07/27/16		KGB Airport		20	
07/27/16	2372	Kuenz America Inc		202,463	
07/27/16	2373	Kuenz America Inc		321,440	

Date	Num	Vendor	FY17 BUDGET \$	Expenditures	Description
07/27/16	2373	Kuenz America Inc		39,200	
07/28/16	2016107	Pool Engineering, Inc.		669	
07/28/16	651	Best Western Landing Hotel		150	
07/29/16		Safeway KTN		84	
07/29/16	201607138	Kleinschmidt Associates Inc.		293	
07/31/16	160752	Glenn Brewer Consulting Engineer		2,700	
07/31/16	646234	Anderes Oil		3,911	
07/31/16	PH201607	Ketchikan City of 2933 P&H		80	
07/31/16	16071035	Alaska Broadcast Communications,		75	
07/31/16	16071036	Alaska Broadcast Communications,		75	
07/31/16	LI0U201607	Liou, Jim C.P.		2,000	
07/31/16	162109	R&M Engineering-Ketchikan		6,076	
07/31/16	533	Payroll		12,581	
08/01/16		Safeway KTN		97	
08/01/16	16019	Crestchic, Inc.		42,650	
08/01/16	PH20160801	Wrangell City & Borough		6	
08/02/16		KGB Airport		20	
08/02/16	36944	Taquan Air		438	
08/02/16	36944	Taquan Air		438	
08/03/16	715	Best Western Landing Hotel		240	
08/03/16	16078	Boyer Towing, Inc.		3,543	
08/04/16	94267	Pacific Airways Inc		220	
08/04/16	94267	Pacific Airways Inc		220	
08/04/16	K41189	Tyler Rental, Inc.		3,250	
08/05/16	32837	Ketchikan Daily News		84	
08/05/16	741	Best Western Landing Hotel		229	
08/05/16		Alaskan & Proud Mkt KTN		28	
08/06/16		KGB Airport		20	
08/06/16		Safeway KTN		102	
08/07/16	106028	Madison Lumber & Hardware Inc		8	
08/07/16	6082	McMillen LLC		69,308	
08/07/16		KGB Airport		20	
08/08/16	94351	Pacific Airways Inc		880	
08/08/16		Ketchikan City of 2933 P&H		402	
08/09/16		Safeway KTN		42	
08/10/16	7058	Misty Fjords Air & Outfitting LLC		1,359	
08/10/16	525413	Petro Marine Services-KTN		514	
08/10/16		Safeway KTN		55	
08/10/16		Safeway KTN		54	
08/10/16		CC Salmon Falls Resort		430	
08/11/16	525418	Petro Marine Services-KTN		416	
08/11/16	805	Best Western Landing Hotel		474	
08/11/16	812	Best Western Landing Hotel		398	
08/11/16	816	Best Western Landing Hotel		398	
08/11/16		Safeway KTN		76	
08/11/16		Safeway KTN		110	
08/11/16	5	Kollgaard Eric		7,490	
08/12/16	7070	Misty Fjords Air & Outfitting LLC		657	
08/14/16	2016288	Doyon's Landing LLC		1,200	
08/14/16		Safeway KTN		47	
08/15/16	WOL201608	.Wolfe, Eric		136	
08/15/16	PST04	Pacific Pile and Marine		462,742	
08/15/16	PST04	Pacific Pile and Marine		173,486	
08/15/16	FA01	Pacific Pile and Marine		1,265	
08/16/16	COP03	Pacific Pile and Marine		16,055	
08/16/16	K43356	Tyler Rental, Inc.		285	
08/16/16	94579	Pacific Airways Inc		440	

Date	Num	Vendor	FY17 BUDGET \$	Expenditures	Description
08/17/16	37364	Taquan Air		219	
08/17/16	T44072	Tyler Industrial Supply		11	
08/17/16		Tatsudas IGA		58	
08/18/16	94600	Pacific Airways Inc		220	
08/18/16	94600	Pacific Airways Inc		220	
08/18/16		Walmart KTN - CC		32	
08/19/16	109488	Madison Lumber & Hardware Inc		68	
08/19/16	T44606	Tyler Rental, Inc.		397	
08/19/16	94628	Pacific Airways Inc		293	
08/19/16	94628	Pacific Airways Inc		293	
08/19/16	94628	Pacific Airways Inc		293	
08/20/16		Ketchikan Gateway Borough		20	
08/20/16	KDN20160820	Ketchikan Daily News		137	
08/21/16	526610	Petro Marine Services-KTN		463	
08/21/16		Safeway KTN		84	
08/22/16	110150	Madison Lumber & Hardware Inc		6	
08/22/16		Alaskan & Proud Mkt KTN		81	
08/22/16	151404	Bay Company Enterprises, LLC		2,627	
08/23/16	37631	Taquan Air		438	
08/23/16	37631	Taquan Air		438	
08/24/16	980	Best Western Landing Hotel		191	
08/25/16	94741	Pacific Airways Inc		440	
08/25/16	94741	Pacific Airways Inc		440	
08/25/16		Safeway KTN		50	
08/25/16	985	Best Western Landing Hotel		203	
08/26/16	234064	Yanke Machine Shop		892	
08/26/16	7176	Misty Fjords Air & Outfitting LLC		329	
08/26/16	7176	Misty Fjords Air & Outfitting LLC		329	
08/26/16	T45663	Tyler Industrial Supply		177	
08/27/16	250844	Ketchikan City of 2933 P&H		24	
08/28/16	527449	Petro Marine Services-KTN		486	
08/28/16		Safeway KTN		58	
08/29/16	39955	PC Hydraulics		6,275	
08/29/16	T46086	Tyler Industrial Supply		26	
08/30/16	114134766011	Dowl, LLC		1,484	
08/30/16		Ketchikan Gateway Borough		20	
08/30/16		Ketchikan Gateway Borough		6	
08/31/16	657324	Anderes Oil		1,432	
08/31/16	TO170161	BAM LLC		11,040	
08/31/16	1608S1	Glenn Brewer Consulting Engineer		4,693	
08/31/16	1608S2	Glenn Brewer Consulting Engineer		600	
08/31/16	PH201608	Ketchikan City of 2933 P&H		66	
08/31/16	482	PML Environmental		1,293	
08/31/16	162109003	R&M Engineering-Ketchikan		4,165	
08/31/16	T46131	Tyler Industrial Supply		405	
08/31/16	538	Payroll		14,155	
08/31/16	KDR201608	de Rubertis, Kim		6,119	
08/31/16	2480	Kuenz America Inc		6,400	
08/31/16	2481	Kuenz America Inc		6,600	
09/01/16	94889	Pacific Airways Inc		880	
09/01/16	T46599	Tyler Industrial Supply		711	
09/02/16	1054	Best Western Landing Hotel		203	
09/04/16	6148	McMillen LLC		1,280	
09/04/16	6148	McMillen LLC		37,759	
09/05/16	528234	Petro Marine Services-KTN		462	
09/05/16		CC Vendors		55	
09/05/16		Safeway KTN		73	
09/05/16		Safeway KTN		191	

Date	Num	Vendor	FY17 BUDGET \$	Expenditures	Description
09/06/16	1609168061	Pacific Pride		224	
09/06/16		Safeway KTN		68	
09/08/16	16023	Crestchic, Inc.		42,650	
09/08/16	528476	Petro Marine Services-KTN		501	
09/09/16		Safeway KTN		86	
09/10/16	95018	Pacific Airways Inc		880	
09/10/16		CC KTN Airport		20	
09/10/16		Alaskan & Proud Mkt KTN		92	
09/11/16	95023	Pacific Airways Inc		440	
09/13/16	115563	Madison Lumber & Hardware Inc		70	
09/13/16	95096	Pacific Airways Inc		440	
09/13/16		Safeway KTN		32	
09/14/16	DWNPM17037	Swagelok NW Fluid System Technol		20,986	
09/14/16	5114891	Swagelok NW Fluid System Technol		9,687	
09/14/16	715463	Anderes Oil		456	
09/14/16		CC KTN Airport		20	
09/14/16	KDN20160914	Ketchikan Daily News		137	
09/15/16	TO17017	BAM LLC		24,500	
09/15/16	PST05	Pacific Pile and Marine		783,126	
09/15/16	95117	Pacific Airways Inc		440	
09/15/16		Safeway KTN		80	
09/16/16	S261KET29N	Samson Tug & Barge		158	
09/16/16	1802406341	USDA Forest Service		13,235	
09/17/16	82100085773	Les Schwab		24	
09/18/16		Safeway KTN		242	
09/19/16	253146	Ketchikan City of 2933 P&H		26	
09/19/16		Walmart KTN - CC		40	
09/20/16	95164	Pacific Airways Inc		440	
09/20/16		Alaskan & Proud Mkt KTN		152	
09/20/16	4024438	Swagelok NW Fluid System Technol		15,785	
09/22/16	S262KET32N	Samson Tug & Barge		95	
09/22/16		Safeway KTN		139	
09/23/16	529763	Petro Marine Services-KTN		500	
09/23/16		Alaska Air		11	
09/24/16	1141347660102	Dowl, LLC		1,415	
09/25/16	16091032	Alaska Broadcast Communications,		38	
09/25/16	16091033	Alaska Broadcast Communications,		38	
09/25/16		Safeway KTN		91	
09/25/16		CC KTN Airport		6	
09/26/16	242476	Service Auto Parts		33	
09/26/16	T50571	Tyler Industrial Supply		126	
09/26/16	721929	Anderes Oil		12	
09/26/16		CC KTN Airport		6	
09/26/16		Alaskan & Proud Mkt KTN		46	
09/26/16		CC Hotel Misc		25	
09/26/16	530295	Petro Marine Services-KTN		2,561	
09/26/16	530297	Petro Marine Services-KTN		7,387	
09/27/16	16111	Boyer Towing, Inc.		550	
09/27/16		CC KTN Airport		20	
09/27/16		CC Hotel Misc		209	
09/27/16	95298	Pacific Airways Inc		1,055	
09/28/16		CC Vendors		130	
09/28/16		Alaskan & Proud Mkt KTN		36	
09/28/16	530080	Petro Marine Services-KTN		434	
09/29/16	K162610IN	Schmolck Mechanical Contractors I		198	
09/30/16	543	Payroll		13,763	
09/30/16	WOL201609	.Wolfe, Eric		22	
09/30/16	669881	Anderes Oil		631	
09/30/16		CC KTN Airport		20	
09/30/16	1609S2	Glenn Brewer Consulting Engineer		800	

Date	Num	Vendor	FY17 BUDGET \$	Expenditures	Description
09/30/16	P&H201609	Ketchikan City of 2933 P&H		111	
09/30/16	162109004	R&M Engineering-Ketchikan		4,393	
10/01/16	120485	Madison Lumber & Hardware Inc		222	
10/01/16	95347	Pacific Airways Inc		440	
10/01/16	6327741	Lynden Transport, Inc.		624	
10/01/16	114134766012	Dowl, LLC		1,415	
10/02/16	530397	Petro Marine Services-KTN		449	
10/03/16	6327745	Lynden Transport, Inc.		248	
10/03/16	4024573	Swagelok NW Fluid System Technol		7,471	
10/04/16	728013	Anderes Oil		13	
10/04/16	77954	GCSIT Solutions		2,114	
10/04/16	530434	Petro Marine Services-KTN		426	
10/04/16	39089	Taquan Air		876	
10/05/16	168370	Valley Nut & Bolt Co., Inc.		740	
10/05/16		Safeway KTN		123	
10/05/16		CC Vendors		27	
10/05/16		Safeway KTN		123	
10/06/16	95401	Pacific Airways Inc		440	
10/06/16	S266KET29N	Samson Tug & Barge		53	
10/06/16		Safeway KTN		20	
10/06/16	KDN20161005	Ketchikan Daily News		137	
10/06/16		CC KTN Airport		20	
10/07/16	T52521	Tyler Industrial Supply		42	
10/07/16	T52573	Tyler Industrial Supply		48	
10/09/16		Safeway KTN		32	
10/10/16	16024	Crestchic, Inc.		42,650	
10/10/16	530956	Petro Marine Services-KTN		433	
10/10/16		CC KTN Airport		26	
10/10/16		Alaskan & Proud Mkt KTN		40	
10/11/16	KET40000077	Samson Tug & Barge		80	
10/11/16		Safeway KTN		81	
10/11/16		Safeway KTN		24	
10/12/16	5115436	Swagelok NW Fluid System Technol		1,917	
10/12/16	AKJUN17779	Fastenal		642	
10/12/16		Alaskan & Proud Mkt KTN		85	
10/13/16		CC Vendors		117	
10/13/16	5380801	CC Vendors		729	
10/14/16	6188	McMillen LLC		42,112	
10/14/16		CC KTN Airport		26	
10/16/16	246523	Service Auto Parts		43	
10/17/16	124402	Madison Lumber & Hardware Inc		108	
10/17/16	531473	Petro Marine Services-KTN		482	
10/17/16		CC KTN Airport		32	
10/17/16		Alaska Airlines Cargo		563	
10/18/16	95503	Pacific Airways Inc		440	
10/18/16	PST06	Pacific Pile and Marine		1,037,932	
10/18/16	5115550	Swagelok NW Fluid System Technol		9,702	
10/18/16	K54200	Tyler Rental, Inc.		27,500	
10/18/16	168759	Valley Nut & Bolt Co., Inc.		223	
10/18/16	531554	Petro Marine Services-KTN		415	
10/18/16		CC Vendors		50	
10/18/16		CC KTN Airport		20	
10/18/16		Alaska Air		130	
10/19/16	5115578	Swagelok NW Fluid System Technol		2,712	
10/20/16	95533	Pacific Airways Inc		880	
10/20/16	531757	Petro Marine Services-KTN		412	
10/20/16	5115615	Swagelok NW Fluid System Technol		700	

Southeast Alaska Power Agency
WORK-IN-PROGRESS R&R Capital Projects as of Oct 31, 2016

Date	Num	Vendor	FY17 BUDGET \$	Expenditures	Description
10/20/16	T54475	Tyler Industrial Supply		1,746	
10/20/16		Alaska Air		78	
10/21/16	S271KET39N	Samson Tug & Barge		159	
10/21/16		CC KTN Airport		20	
10/22/16		Safeway KTN		296	
10/22/16	114134766013	Dowl, LLC		81	
10/22/16	39092	Taquan Air		438	
10/24/16	1016851	Seaborne Marine Services JV		5,000	
10/25/16	629094	Portland Compressor		8,659	
10/26/16	95599	Pacific Airways Inc		880	
10/26/16	169019	Valley Nut & Bolt Co., Inc.		105	
10/26/16	1460	Best Western Landing Hotel		168	
10/27/16	AKJUN17884	Fastenal		533	
10/27/16		Alaskan & Proud Mkt KTN		8	
10/27/16	95630	Pacific Airways Inc		440	
10/27/16	1599	Panolin America		1,319	
10/27/16		Alaska Air		78	
10/28/16	K164087IN	Schmolck Mechanical Contractors I		32	
10/28/16	16176	Segrity LLC		8,849	
10/28/16	T55715	Tyler Industrial Supply		123	
10/28/16	95653	Pacific Airways Inc		880	
10/31/16	K164151IN	Schmolck Mechanical Contractors I		341	
10/31/16		Alaskan & Proud Mkt KTN		139	
10/31/16		Tatsudas IGA		71	
10/31/16	16101340	Alaska Broadcast Communications,		98	
10/31/16	16101341	Alaska Broadcast Communications,		98	
10/31/16	201610	Alaska Yacht Guides, LLC		40	
10/31/16	201610	Alaska Yacht Guides, LLC		6,750	
10/31/16	680445	Anderes Oil		1,376	
10/31/16	AKJUN17899	Fastenal		348	
10/31/16	511	PML Environmental		1,050	
10/31/16	162109-05	R&M Engineering-Ketchikan		3,205	
10/31/16	11234	Electric Power Systems Inc.		3,270	
10/31/16	551	SEAPA Payroll		7,122	
Total 242-13 Reservoir Expansion SWL				8,825,424	
248-14 Lathe TYL			\$0		Working with legal to remedy vendor down-payment with no delivery of goods. Lathe from new vendor (Grizzly Industrial). Machine-mount not delivered until July. (S.Henson)
06/30/14	\$16,823	<i>FY14 Expenditures</i>		-	
	(\$16,823)	<i>FY15 Expenditures</i>		-	
	\$41,441	<i>FY16 Expenditures</i>			
	(\$41,441)	<i>Capitalized FY16</i>			
	\$1,218	<i>FY17 Expenditures</i>			IN SERVICE OCT 2016
07/21/16	850121701	Grizzly Industrial, Inc.		576	
10/11/16	8324225.4	Grizzly Industrial, Inc.		590	
10/13/16	S268WRA16N	Samson Tug & Barge		53	
Total 248-14 Lathe TYL				1,218	

Date	Num	Vendor	FY17 BUDGET \$	Expenditures	Description
249-14 Marine Term Gage/CommT			\$65,000		Pressure transducers, replacement gauges and software design to integrate marine terminal data. Engineering complete, solar panels and all materials received. Installed and operational except failed batter at site. Capitalized all but radio portion in FY16. To be integrated with SCADA in FY17. (S.Henson)
	\$ 126,111	FY15 Expenditures			
	\$ 161,353	FY16 Expenditures			
	\$ (234,806)	FY16 Capitalization			
	\$ 30,780	FY17 Expenditures			
06/30/16	524	FY16 Capitalization		(234,806)	
07/01/16	46427	Petro Marine Services-WRG		228	
07/05/16	1563	Alpine Mini Mart		36	
07/09/16	391810	Ottesen's Inc		64	
07/09/16	50245	Petro Marine Services-WRG		172	
07/11/16	3853	Stikine Inn		904	
07/12/16	80682	Futaris Inc		1,086	
07/18/16	30964001	Wrangell City & Borough		3,120	
07/19/16	392419	Ottesen's Inc		40	
07/21/16	392535	Ottesen's Inc		37	
07/21/16	392538	Ottesen's Inc		43	
07/31/16	52621	Sunrise Aviation Inc		435	
07/31/16	533	Payroll		3,155	
08/08/16	1575	Alpine Mini Mart		67	
08/31/16	30553	Temsco Helicopters, Inc.		1,879	
08/31/16	538	Payroll		1,143	
08/31/16	16161	Segrity LLC		6,136	
08/31/16	3990	Stikine Inn		432	
09/02/16	30568	Temsco Helicopters, Inc.		1,863	
09/02/16	3993	Stikine Inn		440	
09/13/16	N6578SUPP1	Twin Eagle Consulting, LLC		6,919	
09/30/16	543	Payroll		1,143	
10/06/16	31012001	Wrangell City & Borough		1,439	
Total 249-14 Marine Term Gage/Co				83,437	
252-14 Submarine SpliceSpareTYL			\$213,000		Existing spares evaluated to determine portions that require replacement following specs recommended by Poseidon Engineering. Developing RFP for bid. (S.Henson)
	\$ -	FY16 Expenditures		-	
Total 252-14 Submarine Splice SpareTYL				-	
256-15 Alarm Trip Protection SWL-			\$53,011		Two-year project; review sensors and relays, reliability and critical protection issue. Board awarded to Segrity (Mar 2015). Scheduled for completion in CY16. (E.Wolfe)
	\$ 611	FY15 Expenditures			
	\$ 157,765	FY16 Expenditures			
	\$ 37,538	FY17 Expenditures			
08/21/16	3975	Stikine Inn		163	
08/31/16	52648	Sunrise Aviation Inc		870	
09/08/16	16160	Segrity LLC		32,590	
09/30/16	16169	Segrity LLC		3,780	
10/28/16	16175	Segrity LLC		135	
Total 256-15 Alarm Trip Protection SWL-TYL				195,914	
258-15 System Control Improve			\$38,843		Two-year project to increase reliability at both plants; coordinate facilities' operations. Board awarded to Segrity (Mar 2015). Scheduled for completion in CY16. (E.Wolfe)
	\$ 28,766	FY15 Expenditures			
	\$ 44,194	FY16 Expenditures			
	\$ 3,285	FY17 Expenditures			
07/31/16	16155	Segrity LLC		1,083	
08/31/16	16162	Segrity LLC		953	
09/30/16	16168	Segrity LLC		938	
10/28/16	16174	Segrity LLC		313	
Total 258-15 System Control Improvements SWL-TYL				76,245	

Southeast Alaska Power Agency

WORK-IN-PROGRESS R&R Capital Projects as of Oct 31, 2016

Date	Num	Vendor	FY17 BUDGET \$	Expenditures	Description
259-15 Turbine Shutoff Valves TYL			\$35,000		Implementation of recommendations from HDR engineering review. Toroidal cylinder repair to be completed in FY17. (E.Wolfe)
	\$ 84,857	FY15 Expenditures			
	\$170,774	FY16 Expenditures			
	(\$255,631)	Capitalized FY16			
	-	FY17 Expenditures			
Total 259-15 Turbine Shutoff Valve TYL				-	
260-15 Exciters SWL			\$415,751		Replaces 1997 exciters; coordinate with RR261-15. Equipment on site at Swan Lake. Awaiting installation window. (E. Schofield)
	\$ 10,104	FY15 Expenditures		-	
	\$ 374,052	FY16 Expenditures			
	\$ 3,081	FY17 Expenditures			
07/31/16	16156	Segrity LLC		1,921	
08/31/16	16163	Segrity LLC		1,160	
Total 260-15 Exciters SWL				387,237	
261-15 Generator Switch Gear SWI			\$484,743		Replace existing gear; includes spare breaker. Coordinate with RR260-15. Equipment delivered onsite at SWL, awaiting installation window. (E.Schofield)
	\$ 9,773	FY15 Expenditures		-	
	\$ 388,390	FY16 Expenditures			
	\$ 3,081	FY17 Expenditures			
07/31/16	16156	Segrity LLC		1,921	
08/31/16	16163	Segrity LLC		1,160	
Total 261-15 Generator Switch Gear SWL				401,244	
263-16 CTs-Relay WRG Circuit Swt			\$165,000		Additional protection-control relays and current-sensing equipment in the Wrangell switchyard. Electrical design being finalized. (Electrical Power Systems). (S.Henson)
	\$ 20,963	FY16 Expenditures			
	\$ 1,439	FY17 Expenditures			
09/30/16	10956	Electric Power Systems Inc.		1,439	
Total 263-16 CTs-Relay WRG Circuit Sw				22,402	
265-16 Marker Balls OHL TYL			\$600,596		Replacement of original marker balls on the Tyee transmission line. Marker balls inventoried; Northern Powerline Constructors (Anchorage) successful bidder. Scheduled for June 2017. (S.Henson)
	\$ 164	FY17 Expenditures			
07/21/16	3315739	Daily Journal of Commerce		77	
07/21/16	I01389867	Alaska Dispatch News		87	
Total 265-16 Marker Balls OHL TYL				164	
267-16 Roof-Siding Housing TYL			\$188,787		Replace roofing on Tyee Lake employee housing (3) and crew quarters; vinyl siding on employee housing (3). Board awarded to H Construction. COMPLETE JULY 2016. (S.Henson)
	\$ 1,453	FY16 Expenditures			
	\$ 194,275	FY17 Expenditures			
07/18/16	16049-01	H Construction LLC		160,000	
07/25/16	16049-02	H Construction LLC		34,275	
Total 267-16 Roof-Siding Housing TYL				195,728	
269-16 Guy Thimbles STI			\$270,000		Replace guy thimbles on STI. Rescheduled to FY17. (S.Henson)
	\$ -	FY17 Expenditures			
Total 269-16 Guy Thimbles STI				-	
270-16 Dampeners OHL TYL			\$99,900		Replacement of 180 dampeners on Tyee transmission line. Rescheduled to FY17. (S.Henson)
	\$ 8,696	FY16 Expenditures			
	\$ -	FY17 Expenditures			
Total 270-16 Dampeners OHL TYL				8,696	

Southeast Alaska Power Agency

WORK-IN-PROGRESS R&R Capital Projects as of Oct 31, 2016

Date	Num	Vendor	FY17 BUDGET \$	Expenditures	Description
271-16 Substation Upgrade WRG			\$45,025		Wrangell substation upgrades completed August 2016 (WML&P). Billing received in October. (S.Henson)
	\$ 30,613	FY16 Expenditures			
	\$ 14,412	FY17 Expenditures			
10/01/16	547R	Reverse FY16 accrual		(30,613)	
10/19/16	WRGSUB	Wrangell City & Borough		45,025	
Total 271-16 Substation Upgrade WRG				45,025	
272-17 Needle Assembly TYL			\$123,000		Repair to needle position feedback assembly. (Henson)
	\$ -	FY17 Expenditures			
Total 272-17 Needle Assembly TYL				-	
273-17 XFMR Bushing TYL			\$70,000		Replace STI transformer bushing at Tyee substation. Spring 2017. (Henson)
	\$ -	FY17 Expenditures			
Total 273-17 XFMR Bushing TYL				-	
274-17 Emission Valve Pipe SWL			\$35,000		Insert pipe liner to reinforce air emission valve piping at SWL. (Schofield)
	\$ -	FY17 Expenditures			
Total 274-17 Emission Valve Pipe SWL				-	
275-17 Manifold Replace. TYL			\$38,700		Replace manifold on governor at Tyee Lake. (Henson)
	\$ -	FY17 Expenditures			
Total 275-17 Manifold Replacement TYL				-	
276-17 Schweitzer RTAC Upgrades			\$33,500		Replace existing relays with RTACs. (Henson)
	\$ -	FY17 Expenditures			
Total 276-17 Schweitzer RTAC Upgrade				-	
277-17 Debris Boom SWL			\$284,000		Replacement of failed debris boom and anchors at SWL. Bid awarded to Worthington, Sep 2016. (Schofield)
	\$ 10,262	FY17 Expenditures			
07/01/16	6000A	McMillen LLC		2,226	
08/07/16	6082	McMillen LLC		7,880	
09/03/16	62012	Pilot Publishing, Inc.		84	
09/03/16	62004	Wrangell Sentinel		72	
Total 277-17 Debris Boom SWL				10,262	
Total WIP R&R Capital Projects			\$10,899,369	\$ 11,285,784	

* Total Work-In-Progress includes deductions for capitalized projects, and therefore do not match the Total Expenditures on the Summary page.

SOUTHEAST ALASKA POWER AGENCY - DISBURSEMENTS

Accounts	Total
Revenue Fund	\$ 612,142.16
R&R Fund	\$ 59,016.75
Construction Fund	\$ 1,186,928.13
New Generation Fund	\$ 78.00
TOTAL	<u>\$ 1,858,165.04</u>

SUGGESTED MOTION

I move to approve disbursements for the month of November 2016
in the amount of \$1,858,165.04.

This list outlines significant expenditures paid during this period:

Pacific Pile & Marine - SWL Reservoir Expansion Project construction	\$ 1,037,932
Slatercom WCD - Marker Ball inventory	55,635
Wrangell City & Boro - PERS FY15, FY16 and FY17; Wrangell substation upgrade	317,322
Wells Fargo - Principal & Interest for 2009 Series and 2015 Series Bonds	132,554

NOVEMBER 2016

Invoice No.	Company (Vendor)	Revenue Fund	R&R Fund	Construction	New Gen
528349	Alaska Airlines Cargo			79.18	
16101633	Alaska Broadcast Communications, Inc.	30.00			
16101634	Alaska Broadcast Communications, Inc.	30.00			
16101678	Alaska Broadcast Communications, Inc.	30.00			
16101679	Alaska Broadcast Communications, Inc.	30.00			
16101723	Alaska Broadcast Communications, Inc.	30.00			
16101724	Alaska Broadcast Communications, Inc.	30.00			
16101770	Alaska Broadcast Communications, Inc.	30.00			
16101771	Alaska Broadcast Communications, Inc.	30.00			
16101820	Alaska Broadcast Communications, Inc.	30.00			
16101821	Alaska Broadcast Communications, Inc.	30.00			
16101340	Alaska Broadcast Communications, Inc.			97.50	
16101341	Alaska Broadcast Communications, Inc.			97.50	
APCM201610	Alaska Permanent Capital Inc	1,665.92			
201610	Alaska Yacht Guides, LLC	67.96		6,790.00	
201612	Alaska Yacht Guides, LLC			5,250.00	
1603	Alpine Mini Mart	129.40			
S275596	Analysts, Inc.	35.00			
680445	Anderes Oil			1,376.45	
15402	Angerman's Inc	99.95			
15443	Angerman's Inc	474.90			
15475	Angerman's Inc	(359.95)			
2204	Ascent Law Partners LLP	4,838.00			
52468	Bay Company Enterprises, LLC	147.00			
151514	Bay Company Enterprises, LLC	13.20			
151517	Bay Company Enterprises, LLC	1,053.12			
730694	BDO USA LLP	23,625.33			
1460	Best Western Landing Hotel			167.94	
1512	Best Western Landing Hotel			168.44	
333	Breakaway Adventures, LLC	400.00			
CAM201612	Cambria Properties LLC	1,475.00			
268985	City Market	108.82			
268986	City Market	6.98			
196072	City Market	15.94			

SOUTHEAST ALASKA POWER AGENCY - DISBURSEMENTS

NOVEMBER 2016

Invoice No.	Company (Vendor)	Revenue Fund	R&R Fund	Construction	New Gen
271992	City Market	22.98			
26938	CoastAlaska, Inc.	2,065.50			
47632	Commonwealth Associates, Inc.	132.75			
16029	Crestchic, Inc.			8,040.00	
126235	Cummins, Inc.	519.50			
11241	DHittle & Associates, Inc.	4,128.00			
114134766012	Dowl, LLC			1,415.00	
114134766013	Dowl, LLC			80.75	
11194	Electric Power Systems Inc.		12,664.25		
11234	Electric Power Systems Inc.	3,269.70			
7120	ERM Alaska, Inc	9,942.88			
AKJUN17779	Fastenal	-		641.91	
AKJUN17884	Fastenal	-		533.09	
AKJUN17899	Fastenal			348.07	
284038	Frontier Shipping & Copyworks	9.20			
80860	Futaris Inc	6,145.00			
4831	I Even Do Windows	300.00			
20161101	Ketchikan City of 2933 P&H			172.68	
KDN20161005	Ketchikan Daily News			137.44	
33094	Ketchikan Daily News	61.20			
KGB201612	Ketchikan Gateway Borough	3,984.75			
16100057	KFMJ Radio, LLC	588.00			
201610168	Kleinschmidt Associates Inc.	2,568.82			
LK201612	LK Storage & Rentals	78.00			78.00
96947	LNM Services	71.03			
96953	LNM Services	45.79			
6327741	Lynden Transport, Inc.	-		624.37	
124402	Madison Lumber & Hardware Inc	-		107.85	
83926027	McMaster-Carr	76.82			
84559368	McMaster-Carr	487.43			
86342064	McMaster-Carr	91.14			
6188	McMillen LLC	-		42,112.22	
7362	Misty Fjords Air & Outfitting LLC			428.00	
38864	Nolan Center	1,150.00			
395071	Ottesen's Inc	96.93			
397005	Ottesen's Inc	68.38			
397006	Ottesen's Inc	93.96			
397167	Ottesen's Inc	8.58			
397503	Ottesen's Inc	74.22			
397541	Ottesen's Inc	146.54			
397542	Ottesen's Inc	9.79			
397918	Ottesen's Inc	339.99			
398007	Ottesen's Inc	44.97			
95413	Pacific Airways Inc	440.00			
95463	Pacific Airways Inc	880.00			
95503	Pacific Airways Inc	-		440.00	
95533	Pacific Airways Inc	-		880.00	
95599	Pacific Airways Inc	-		880.00	
95630	Pacific Airways Inc			440.00	
95653	Pacific Airways Inc		880.00		
PST06	Pacific Pile and Marine	-		1,037,932.00	
1611171341	Pacific Pride	131.86			
1611171402	Pacific Pride	(21.49)			
1611171642	Pacific Pride	388.80			
1599	Panolin America			1,318.80	
PSGHS2016	Petersburg High School	500.00			

SOUTHEAST ALASKA POWER AGENCY - DISBURSEMENTS

NOVEMBER 2016

Invoice No.	Company (Vendor)	Revenue Fund	R&R Fund	Construction	New Gen
531473	Petro Marine Services-KTN	-		481.65	
531554	Petro Marine Services-KTN	-		414.52	
531757	Petro Marine Services-KTN	-		412.12	
22331	Petro Marine Services-WRG	189.56			
22754	Petro Marine Services-WRG	313.91			
62268	Pilot Publishing, Inc.	56.00			
511	PML Environmental			1,050.00	
629094	Portland Compressor			8,659.00	
142718023	R&M Engineering-Ketchikan	600.00			
162109-05	R&M Engineering-Ketchikan			3,205.00	
859	Ray Matiasowski & Associates	4,000.00			
KET4000077	Samson Tug & Barge	-		79.50	
S269WRA11N	Samson Tug & Barge	1,198.17			
S270WRA06N	Samson Tug & Barge	95.40			
S271KET39N	Samson Tug & Barge	-		158.74	
S272KET35N	Samson Tug & Barge			226.92	
S272WRA12N	Samson Tug & Barge	95.40			
411960	Satellite & Sound Inc	300.00			
K164087IN	Schmolck Mechanical Contractors Inc	-		32.37	
K164151IN	Schmolck Mechanical Contractors Inc	-		340.90	
315889	SE Business Machines	230.00			
1016851	Seaborne Marine Services JV	-		5,000.00	
16174	Segrity LLC	-	312.50		
16175	Segrity LLC	-	135.00		
16176	Segrity LLC	-		8,848.95	
438795	Sentry Hardware & Marine	7.98			
438836	Sentry Hardware & Marine	55.98			
438850	Sentry Hardware & Marine	59.98			
439411	Sentry Hardware & Marine	89.50			
246523	Service Auto Parts	16.33		42.74	
248701	Service Auto Parts	30.84			
4544	Sign Pro	169.45			
3951	Slatercom-WCD	55,635.00			
578925	Southeast Auto & Marine Parts, Inc	112.99			
579038	Southeast Auto & Marine Parts, Inc	643.59			
21238	Stikine Auto Works	169.90			
3928135	Stoel Rives LLP	80.00			
3930429	Stoel Rives LLP	3,350.58			
52688	Sunrise Aviation Inc	9,095.00			
668	Svendsen Marine	207.00			
5115550	Swagelok NW Fluid System Technologies	-		9,701.74	
5115578	Swagelok NW Fluid System Technologies	-		2,711.80	
5115615	Swagelok NW Fluid System Technologies	-		700.18	
39089	Taquan Air			876.00	
39092	Taquan Air			438.00	
30736	Temco Helicopters, Inc.	1,940.40			
51104935	Tetra Tech Inc	10,727.01			
51112193	Tetra Tech Inc	3,870.48			
19178	TexRus	2,191.00			
321110	Timber & Marine Supply Inc	57.90			
321176	Timber & Marine Supply Inc	128.85			
869470	Tongass Business Center	356.50			
39227	Tongass Substance Screening	7,983.50			
6B146482	Travelers	5,729.00			
T54475	Tyler Industrial Supply	-		1,745.77	
T55715	Tyler Industrial Supply	-		122.74	

SOUTHEAST ALASKA POWER AGENCY - DISBURSEMENTS

NOVEMBER 2016

Invoice No.	Company (Vendor)	Revenue Fund	R&R Fund	Construction	New Gen
T56569	Tyler Industrial Supply			1,134.67	
K54200	Tyler Rental, Inc.	-		27,500.00	
K55221	Tyler Rental, Inc.	679.56			
168759	Valley Nut & Bolt Co., Inc.	-		222.75	
169019	Valley Nut & Bolt Co., Inc.	-		104.80	
WF09I-201611	Wells Fargo 2009 Interest	27,750.52			
WF09P-201611	Wells Fargo 2009 Principal	64,166.67			
WF15I201611	Wells Fargo 2015 Interest	40,636.48			
22301	Western Tire Chain	2,512.56			
PERS-FY15	Wrangell City & Borough	78,083.00			
PERS-FY16	Wrangell City & Borough	74,107.68			
PERS-FY17	Wrangell City & Borough	71,821.32			
WRGSUB	Wrangell City & Borough	48,285.00	45,025.00		
115	Wrangell Elks Lodge	1,683.50			
62278	Wrangell Sentinel	46.00			
201610	Employee Reimbursement	122.42			
201610	Bank of America	19,422.66		2,158.08	
Total Disbursements		\$ 612,142	\$ 59,017	\$ 1,186,928	\$ 78
		\$1,858,165.04			

* Bank of America credit card charges include all travel, most telecom and some utility:
 ACS, AT&T Mobility, AP&T, GCI, Globalstar, KPU, PSG Borough, Roadpost, Wrangell City & Boro
 These recurring telecom & utility charges are approximately \$12,000/month.



SOUTHEAST ALASKA POWER AGENCY

MEMO

Date: **December 5, 2016**

From: **Trey Acteson**

To: **Board of Directors**

Subject: **Audited Financial Statements**

An audit of SEAPA's financial statements for the fiscal year ended June 30, 2016 took place the week of October 24 with auditors from BDO USA, LLP on site at the Ketchikan office. A draft copy of the resulting audited financial statements for the fiscal year ended June 30, 2016 and a copy of BDO's *Audit Wrap-Up* have been provided for your review. BDO Audit Manager, Jake Sallander, CPA, is scheduled to present the audited financial statements via teleconference and answer any questions.

Following is a suggested motion to approve the audited financial statements.

SUGGESTED MOTION
I move to approve the Southeast Alaska Power Agency Fiscal Year 2016 Audited Financial Statements as presented.



SOUTHEAST ALASKA POWER AGENCY CEO REPORT

DATE: December 8, 2016
TO: SEAPA Board of Directors
FROM: Trey Acteson, CEO
SUBJECT: CEO Report

GOVERNMENTAL AFFAIRS:

Speaker Ryan announced yesterday that negotiations in the U.S. House of Representatives on the omnibus energy bill have failed. The bill lost momentum following the recent election results as some members appear to see the change in leadership as an opportunity to claw back earlier concessions given to avoid a potential Presidential veto. Our Federal Delegation is working alternative mechanisms, but time runs out in a couple of days. Our amendment to address land conveyance issues in the Lost Creek drainage of the Swan Lake Hydroelectric Project was part of the energy legislation that has failed. Not to worry, this is why we are addressing this issue well ahead of Swan Lake relicensing. The issue remains on our Delegation's to-do list and we are already working alternative pathways to move our amendment forward.

I have been working with our State lobbyist to define priorities for this coming legislative session in Juneau and will apprise the Board of any legislation that emerges in pre-filings that may impact the Agency. SEAPA remains proactive in monitoring and addressing legislation that may affect the Agency and the members we serve.

PUBLIC RELATIONS:

Final editing of the Swan Lake Reservoir Expansion Project construction video should be completed early next year and will be added to our website. When weather moderates in the spring, we'll also look for an opportunity for an official celebration to memorialize completion of the project.

Our radio PR campaign has been effective at bringing a positive message of unity to the three member communities. It's a relatively low cost medium to promote the mission and positive contributions of the Agency. We'll be working to build on that foundation in upcoming months, highlighting the benefits of the Swan Lake Expansion Project.

BEST PRACTICES AND PROCESS IMPROVEMENTS:

The Agency continues to demonstrate a strong commitment to best practices and process improvements. We are actively working with a third party to update operations and

maintenance procedures at the Tyee Hydroelectric facilities. Staff is also working with our safety training contractor to finalize a new Health & Safety Plan.

A comprehensive rewrite of SEAPA's Employee Handbook is underway. This is a significant undertaking and will advance as time and resources allow.

SATELLITE COMMUNICATIONS PROVIDER:

As previously reported to the Board, our current satellite communications provider is going out of business at the end of December. SEAPA has secured a new contract with X2nSat and staff is working closely with them to coordinate requisite changes for a seamless transition. The new provider has access to two satellites capable of seeing our sites so we will have the added benefit of redundancy if needed. The new service has been simplified and comes at a much lower cost.

KAKE TO PETERSBURG INTERTIE (KPI):

The KPI Record of Decision (ROD) was signed by the Forest Supervisor on November 30, 2016. This project has been contemplated since the 1970's and the Notice of Intent starting the public process was published back on May 7, 2010. This is a significant milestone achievement for this project. The ROD authorizes SEAPA to construct a transmission line between Petersburg and Kake, extending our existing transmission system to the North. SEAPA remains steadfast in our approach to this project. If built, it cannot negatively impact the cost of power to our existing member utilities and must result in lower cost power for the community of Kake.

Next Step: SEAPA's project manager is working to firmly establish timelines and deliverables associated with the ROD and then we'll schedule a meeting with the KPI steering committee to discuss findings and options.

PERSONNEL:

We have initiated recruitment to replace SEAPA's Director of Special Projects who will be leaving in January. Please join me in thanking Mr. Wolfe for his outstanding dedication to advancing the Agency's mission, never settling for "because we've always done it that way", and bringing a positive forward looking perspective to the Agency. He has truly been a great asset to the organization and will be greatly missed.

I have retitled the special projects position to Director of Engineering and Technical Services. This will broaden our applicant pool and more accurately describes the well-rounded skillset we are seeking. Resumes are already being received and I expect a surge after the holidays.

Our Temporary Administrative Assistant in Wrangell has completed the initial inventory of documents in the Wrangell Office and the Tyee Power House. She has been released until staff can complete their review of the inventory of documents in their respective areas, and determine the appropriate course of action for each. We anticipate bringing back the Temporary Administrative Assistant at a later date to assist in carrying out those determined actions (e.g. destroy, scan, archive, etc.).

Date: December 6, 2016
To: Trey Acteson, Chief Executive Officer
From: Steve Henson, Operations Manager
Re: Report for December 14, 2016 Board Meeting

MAJOR CONTRACTS and PROJECTS

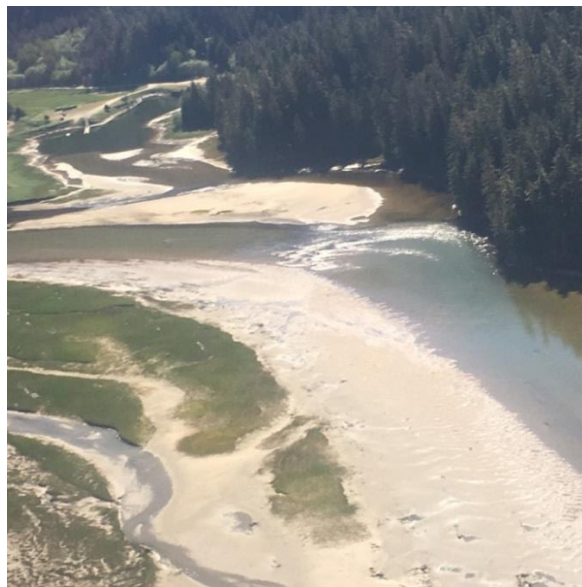
ATV Use on the Tyee Transmission System

Meridian has been selected for the permitting effort required by the USFS for the use of the ARGO on select areas of the Tyee transmission line right-of-way.

The final EA is being reviewed by the USFS.

Dredging/Road Tyee Power Plant Harbor

SEAPA has applied to the Army Corps of Engineers for assistance with design and implementation of a plan to alleviate the silting in the Tyee Power Plant harbor area. The application is currently under review in Washington, D.C.



Silting Impeding Access to Tyee harbor area.

RR232-13 Satellite Communications System

Our present satellite service provider, Futaris, notified us that they are going out of business. SEAPA has contracted with X2nSat to provide services to Swan Lake and eventually to Tyee Lake and any future sites. The transition to the new provider will take place at the end of December. Installation of a satellite and phone system at Tyee Lake has been delayed until X2nSat is in place and we can secure an installation contract with them. We hope to have service at Tyee Lake up and running by early spring.



Tyee satellite platform has been installed by Alaska Clearing.

RR263-16 (CTs-Relay Wrangell Circuit Switcher)

The next phase of the project is the engineering, procurement and installation of CT's on the spur line so that this section can be protected and sectionalized by relay action in the event of a line fault.

We have contracted with Electric Power Systems for the Engineering and Design phase of this project.

The RFP for construction will be issued in early January, 2017.



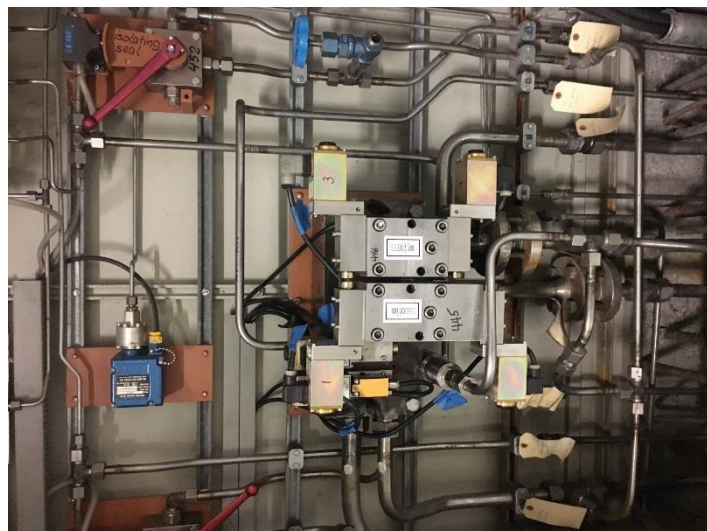
CS-T36 New Circuit Switch

Tyee Lake Operations Manual Review and Update

SEAPA has contracted with Kleinschmidt Associates to assist with the review of our maintenance practices and operating procedures. Although Tyee has an excellent availability record of more than 99% over the last 20 years, which speaks to the dedication of plant personnel, we feel it is time to review and assess our practices and procedures to ensure we are current with today's standards. A site visit was conducted by the consultant on December 6th and 7th, to review the maintenance practices, standard operating procedures and equipment associated with the Tyee Lake system, as well as to interview plant personnel.

Tyee Lake Turbine Shut Off Valve (TSV) Controls

Unit #1 turbine shut off valve (TSV) control blocks have been replaced and the bypass valve has been rebuilt and installed. The system has been checked and is functioning properly.



#1 TSV Control Cabinet



#1 TSV Bypass Valve

Line Maintenance

SEAPA staff has been working on the RFP for a three year contract to perform annual line maintenance on the transmission system. This RFP will be advertised in January, 2017.

Tyee Lake Report

- Turbine Shut Off Valve (TSV) controls refurbishment
- Marine terminal maintenance
- Brushing on Wrangell Island

Swan Lake Report

- Excavator repaired
- Replaced standby diesel generator PLC battery chargers and batteries
- Fabrication and installation of cover plates for conduit and hydraulic piping
- Full Report is attached to the Board packet

Staff will be available during the meeting to answer any questions or concerns.



KETCHIKAN PUBLIC UTILITIES

Swan Lake Project Report

Andy Donato, Electric Division Manager | Dec 2016

SAFETY | ENVIRONMENTAL | SECURITY

- New Hire, John Milner, Mechanic, started Oct 12, 2016 replaced Rob Miller
- Visual lake level reporting twice daily remains in place while instrumentation is out-of-service
- Temporary Log Booms have been put in place to contain/deflect lake debris

OUTAGES | UNIT CONSTRAINTS | RESERVOIR LEVEL

- SWG #2, Nov 3rd, Wicket gate grease fitting failure, shut-down, repaired
- Reservoir level: 324.2 on December 7, 2016

MAINTENANCE (REGULAR)

- Yard lights- intake building remains
- Ordered new Unit #2 bearing oil temp gauge (Trerice)
- Excavator loss-of-power issue resolved with Tyler assistance
- Gazebo main water line valve repairs, remains in progress
- Replacement Diesel gen PLC battery chargers, complete
- Replacement of above battery cells, in progress
- Procurement of replacement draft tube dewatering valve, remains in progress

Project Support (Pool Rise Project)

- Fabrication of plates and covers, in progress
- Assisted with debris removal along with contractor support by BAM.
- Man Camp de-energized, removed, clean-up & site restoration complete
- Install support for emergency generator at intake structure, in progress
- Install support for intake house compressor and air services

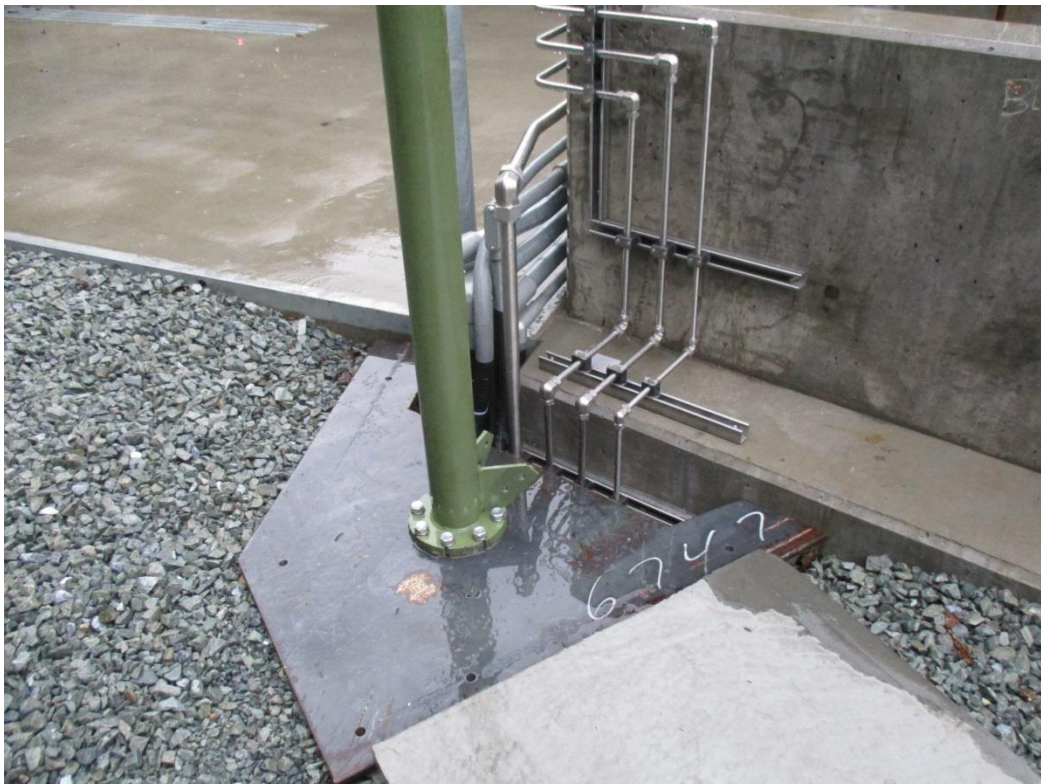
COMPLIANCE

- Scott air packs, one additional added in control room
- Yukon Fire annual inspection of 9-20-2016
 - Punch list items still in progress, i.e. door switch
 - Extinguisher cycling in progress

Attachments/Images



Above: Gate hydraulic lines exposed. Below: Fabrication of protective plates & covers.





Above: New install of diesel generator PLC battery chargers.
Below: SEAPA's new valve house emergency generator



Date: December 6, 2016
To: Trey Acteson, Chief Executive Officer
From: Eric Wolfe, Director of Special Projects
Subject: Report for December 14, 2016 Board Meeting

Swan Lake Reservoir Expansion

Swan Lake Expansion - Project Benefit and Cost

This project will provide between 6,000 and 12,000 MWh of annual energy, benefitting the entire system from a 25% increase in active storage. An annual average 7,500 MWh of weather-independent, dispatchable energy will offset over ½ million gallons of diesel fuel annually. The project is a revenue neutral (no rate increase) \$11 million expansion project, of which \$3.9M was grant funded. This project is a non-capacity amendment with little to no environmental impact.

Before Construction



After Construction



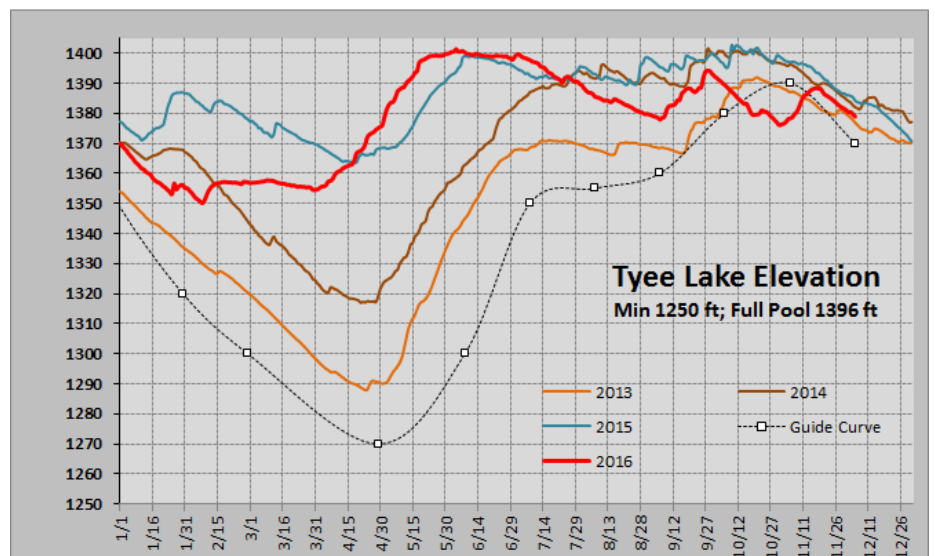
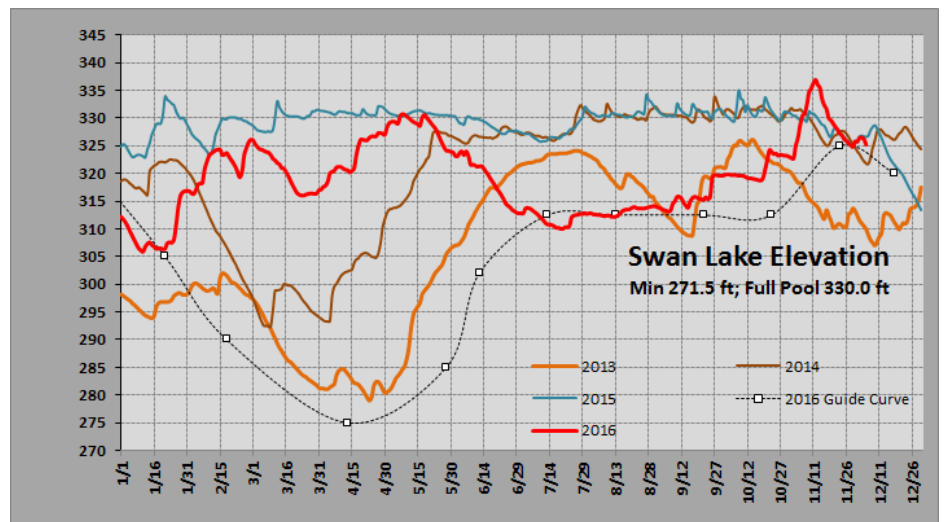
What's left:

We are 99.5% complete on a work basis. Final terminations of electrical components for the PLC and cabinets were underway during the week of December 5th. The commissioning of the vertical gate is substantially complete, final documentation (drawings and manuals) is all that remains of the Kuenz contracts. Our log retainage system (booms and anchors) is under final design and being managed by Ed Schofield. Final documentation for FERC is to be completed during December and January. The project is nearly complete except for final payment haggling with our construction contractor, Pacific Pile & Marine. This is a normal give and take type negotiation as each side appraises the others cost information. Kay Key has included project cost accounting in the financial section, but included here is

a project cost breakout on a percentage basis of current invoicing, which is quite interesting. Please note these are not the final project totals, those will be presented at the next Board meeting.

Project Costs from Feasibility Study to Construction (2012 to 2016)		
Agency Costs: ADF&G,DNR, USFS, Studies, Environmental work	\$ 344,996	3.5%
Feasibility Study.	528,380	5.4%
Preliminary Engineering (0% - 30%)	652,691	6.7%
Flashboard Model Study.	70,768	0.7%
Engineering (Civil, Mechanical, Electrical), Board of Consultants	606,203	6.2%
Flashboard Design and Fabrication (delivered)	608,435	6.3%
Vertical Gate Design Fabrication (delivered)	426,485	4.4%
Construction Engineering	158,550	1.6%
Construction Support (Direct costs, BAM)	760,562	7.8%
Construction Contract Expenditures	<u>5,561,964</u>	<u>57.2%</u>
as of December 6, 2016	\$ 9,719,035	100.0%

Benefits of the project have already been realized. For a two week period during November, when Swan Lake levels exceeded 330 ft., we substantially increased generation at Swan Lake, which decreased generation at Tyee. Tyee utilization had been unusually high during our dry October, thus the storage replacement was welcome as Tyee returned to elevations above the 2016 Ops Plan guide curve. Plots of Swan Lake and Tyee Lake water surface elevations are shown in the graphs at the right. This data comes from our weekly dispatch meeting. Red traces are for 2016. Previous to the reservoir increase project the additional water at Swan Lake would have been lost over the spillway.



Water Management Update

We've endured an exceptionally dry October. Now the cold weather, while increasing our December sales, is also consuming water. At present, we can support this generation level as cold clear weather over SE Alaska can only last so long - until the next strong storm. Using the unusually high loads of the past week, and assuming average case inflows, we projected water levels at Tyee for the next several weeks assuming an extended cold period (typical day shown as Figure 1).

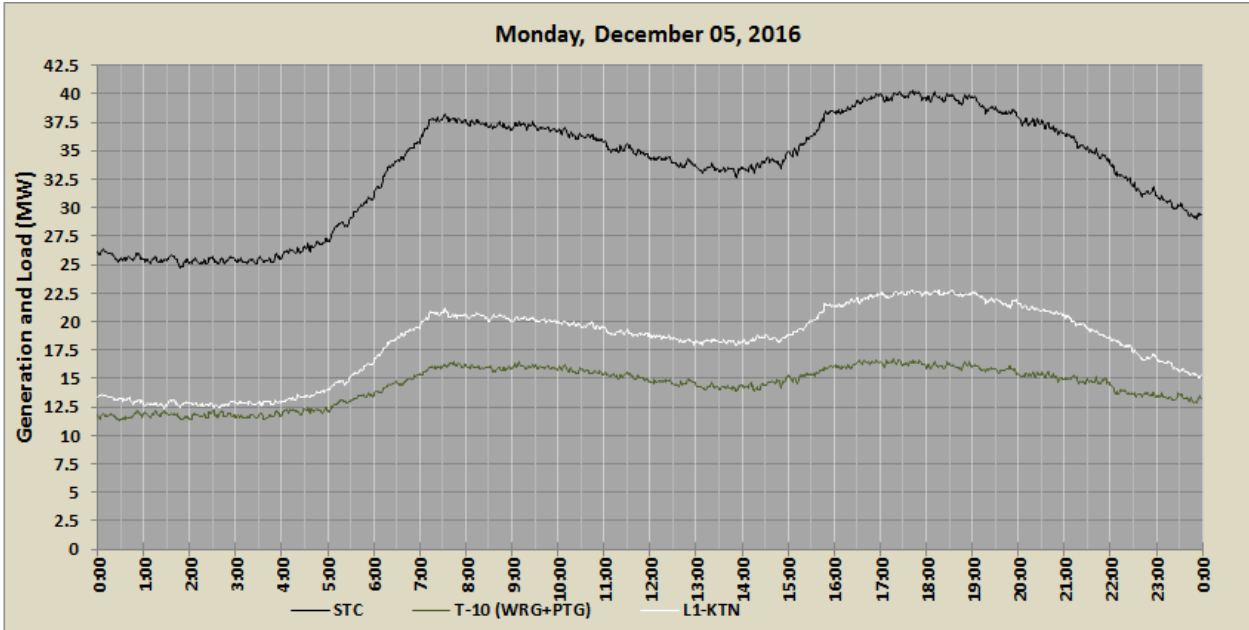


Figure 1-SEAPA deliveries by hour (L1- line leading toward KTN, T10 line leading toward WRG & PSG)

Figure 2 shows Tyee reservoir levels on top of the guide curve (no surprise) during the winter; generation levels as shown in the table at the right within Figure 2. We'll discuss current operations and the Ops Plan in significantly more detail during the meeting.

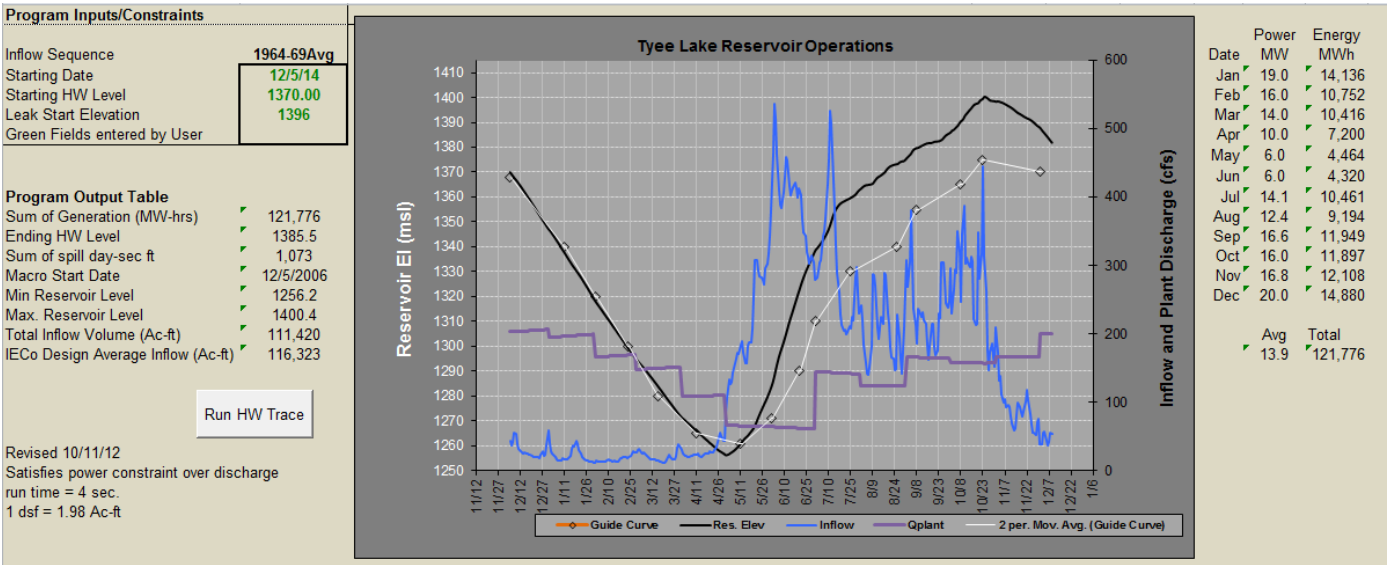


Figure 2-Model run of Tyee Reservoir for high winter loads and normal or expected case inflows.

Date: December 6, 2016
To: Trey Acteson, Chief Executive Officer
From: Ed Schofield, Power System Specialist
Subject: Report for December 14, 2016 Board Meeting

Swan Lake Ice Avoidance Bubbler Compressor

Installation of the Swan Lake Dam Ice Avoidance Bubbler building and compressor took place on November 22, 2016, via helicopter. The Ice Avoidance Bubbler building and compressor were designed to be installed on the north dam pier walkway at an elevation of 361.0'. A delay in delivery of the compressor building prevented the contractor from completing this task prior to demobilization. Negotiations were arranged for SEAPA to install the compressor building and the compressor, with the contractor covering all installation costs, to avoid demobilization delays. The compressor building roof was removed and disassembled. The building (weighing 2,350 lbs.) was flown in and placed into position. The compressor (weighing 1,200 lbs.) was also flown in and placed through the open top of the building. Finally the compressor building roof was reassembled and placed into position to complete the project. The compressor building electrical connections will be completed by Hotwire, the electrical sub-contractor, on December 6, 2016. Swan Lake KPU maintenance staff assisted with the compressor mounting and mechanical plumbing connection.



Compressor Building Placement



Compressor Placed in Building



Swan Lake Dam Compressor Building Installation Complete

Swan Lake Debris Boom 60% Design Review Complete

Worthington Products Inc. has provided a 60% design for the manufacturing of the Swan Lake Debris Boom. The 60% design provided a complete boom layout and design, as well as the shore anchor and mid-stream anchor design load requirements and the general anchor placement. The anchor design loads have been provided to McMillen, LLC, for final design of shore anchors.

The Debris Boom will be constructed of 80 Worthington HDPE (High Density Polyethylene) booms, which are 10 feet in length. The Boom also includes a 23 foot wide debris transfer gate with a depth of 16 feet. Each 10 foot boom section will be equipped with a below-water debris screen, two feet deep and interconnecting hardware. The Boom will be attached to each shore with bedrock anchors and two mid-lake bottom surge anchors. The Debris Boom will be constructed in approximately the same location as the original Swan Lake Debris Boom, which was located just upstream from the dam.



Typical Worthington Tuff Boom Sections – 2016 Swan Lake

Tuff boom sections seen in this photo were installed at Swan Lake in 2007. These sections replaced the original wood boom logs along the north and south shoreline that failed due to extend age.

Fixed Wheel Gate Commissioning

The Swan Lake Reservoir Expansion Project consists of Flash Boards (FB) and a Fixed Wheel Gate (FWG). The FB system is stationary in normal operations (no mechanical functions). The FWG is a hydraulically actuated gate. The FWG provides the means to manage lake inflows beyond the dam's storage capacity. The FWG hydraulic system was designed by Kuenz of Austria and manufactured by Rexroth Corporation of Germany. The Rexroth system consists of a self-contained hydraulic pump skid, located within the Swan Lake Intake Gate House and twin external gate lifting cylinders. The operational control of the FWG hydraulic system is accomplished with a Programmable Logic Computer (PLC), as well as manually with electrical override and manual mechanical valve controls. Commissioning of all Rexroth and Kuenz hydraulic control functionality was completed on December 2, 2016. The gate is now ready for automation integration.



Flash Boards and Fixed Wheel Gate installations are complete. The Fixed Wheel Gate is located to the right hand side of the original dam spillway. Hydraulic lifting cylinders can be seen extending above the gate guides and concrete piers.



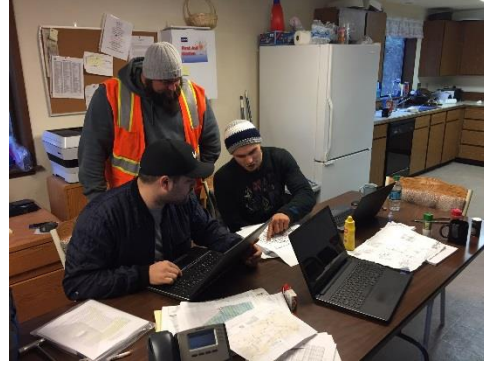
FWG PLC Touch Control Screen



FWG Hydraulic Skid



FWG Control Panel - Located at Gate



Kuenz & Rexroth Technicians



FWG PLC Control Function Testing



FWG Hydraulic Lifting Cylinder

Temporary Debris Boom Installation

A temporary log retention line (2" poly rope with floats) has been strung across the lake to minimize migration of larger logs and root wads toward the dam. This will eventually be replaced with a more permanent debris boom with 24" skirts that is currently in final design. Additionally, an A-frame debris deflector has been constructed and installed directly across the new FWG to keep debris from obstructing the sill and preventing full gate closure. The large landslide that occurred in November is about a mile and a half from the dam, along the northwest lake shore. The landslide deposited a large amount of debris in the lake that will require extensive removal efforts.



FWG A-Frame Debris Deflector



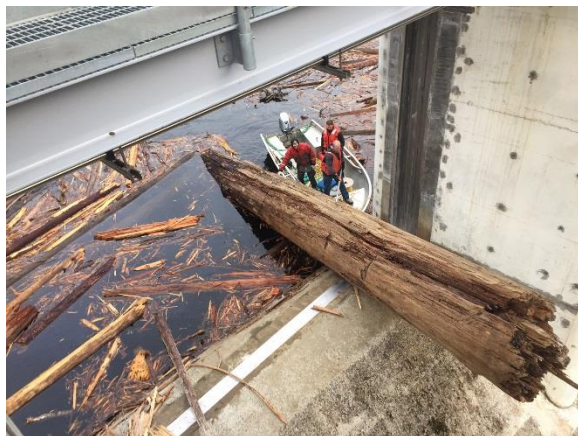
FWG A-Frame Debris Deflector



FWG A-Frame Debris Deflector



Swan Lake Landslide



FWG Debris Removal



Temporary Swan Lake Debris Boom

Pacific Pile & Marine Demobilization / Swan Lake Reservoir Expansion Project Civil Work Complete

Following completion of all major civil work, Pacific Pile & Marine demobilized their men and equipment from Swan Lake on October 26th. On November 16th, Pool Construction demobed the man camp and reconditioned the dam access road. The project is complete, other than the commissioning of the Intake Gate; and integration of remote control and monitoring systems, which will be performed by SEAPA.



PPM Demobe - Barge Loading



SWL Completed Project



**Elevation 336.6' - Flashboards
& Gate Retaining Water**



Fixed Wheel Gate First Spill 11-4-16



**Lake Elevation 336.5' -
Flashboards Downstream Dry**



Fixed Wheel Gate 336.6' Spill 11-9-16



New Debris Removal Platform



**Flash Board Gate Trigger System
(Aerial View)**



SOUTHEAST ALASKA POWER AGENCY RSP PREPAY OPTION MEMO

Date: **December 6, 2016**

From: **Kay Key**

To: **Trey Acteson**

Subject: **Retirement Security Plan (Prepay Option)**

An option to issue a prepayment towards the NRECA defined benefit plan is available in calendar year 2016. This memo outlines the advantages of issuing this lump-sum payment that would reduce annual expenditures and incur long-term savings.

SUGGESTED MOTION

I move to direct staff to issue a lump-sum prepayment to NRECA's Retirement Security Plan in the amount of \$448,687 to apply towards SEAPA's defined benefit plan. I further move to direct staff to amortize the payment over ten years using the straight-line amortization method starting in FY2017.

The billing rate history for SEAPA's Retirement Security Plan (RSP) is attached. SEAPA has the option of making a lump-sum payment of \$448,687 in December that would lower the 2016 contribution rate from 35.43% to 26.62%. It would also lower the 2017 contribution rate from 36.49% to 27.42% and future years' contribution rates by approximately 25% as compared to not making the prepayment.

Based on assumptions of 2% annual salary increases and 0.06% cost of capital (the rate SEAPA is currently earning on the Revenue Fund), SEAPA's estimated savings would be \$487,311, based on the present value of lower contributions through year 2027. These calculations are displayed in an attached Savings Calculation Table.

The \$448,687 payment includes a credit for payments already made during this calendar year. It would be recorded as a deferred debit and amortized over ten years using a straight-line method starting in FY17. 2016 is the last year this prepay option is available, unless extended by special action of the NRECA Board.

Mark Maus, Vice President Actuarial Services for the Retirement Security Plan, will call into the board meeting to provide a power point presentation detailing the current health of the plan, peer comparisons, premiums, and the prepayment option. Mr. Maus and other plan experts will be on the line to answer any questions.

SOUTHEAST ALASKA POWER AGENCY

RSP PREPAY OPTION MEMO

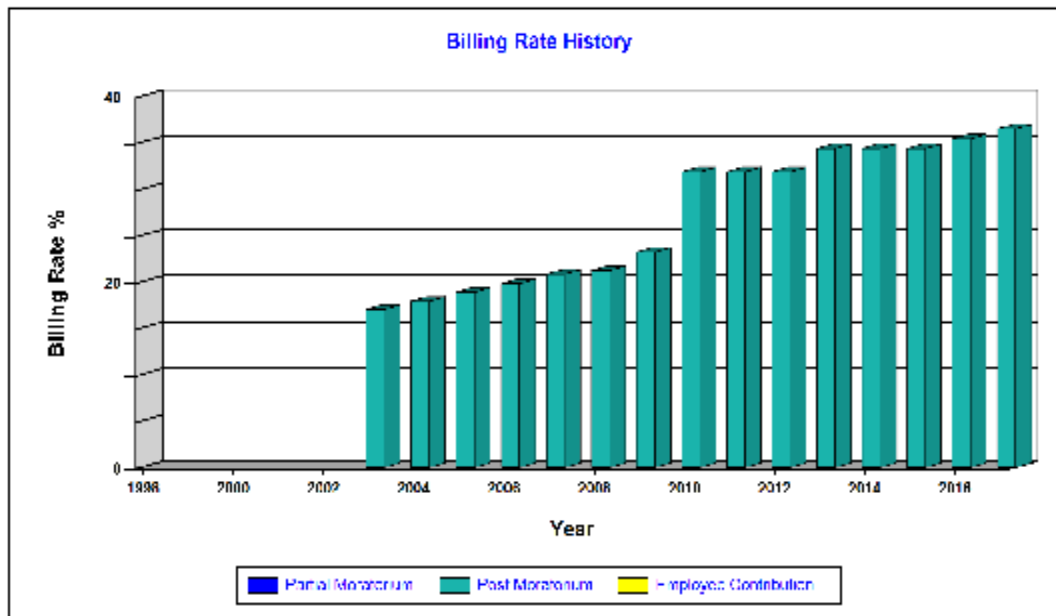


NATIONAL RURAL ELECTRIC COOPERATIVE ASSOCIATION

Retirement Security Plan

System #: 01-02192-001 Plan ID: RNR01A
 Name: SOUTHEAST ALASKA PWR AGENCY

Year	Benefit Level	System Cost	Employee Contribution	Plan	COLA	Average Age	100% Death Benefit	Salary Type
1998								
1999								
2000								
2001								
2002								
2003	2.00	17.00	0.00	02	Yes	51	No	BS
2004	2.00	17.01	0.00	02	Yes	52	No	BS
2005	2.00	18.00	0.00	02	Yes	53	No	BS
2006	2.00	19.84	0.00	02	Yes	51	No	BS
2007	2.00	20.84	0.00	02	Yes	50	No	BS
2008	2.00	21.25	0.00	02	Yes	51	No	BS
2009	2.00	23.21	0.00	02	Yes	49	No	BS
2010	2.00	31.85	0.00	02	Yes	50	No	BS
2011	2.00	31.85	0.00	02	Yes	50	No	BS
2012	2.00	31.85	0.00	02	Yes	57	No	BS
2013	2.00	34.30	0.00	02	Yes	50	No	BS
2014	2.00	34.30	0.00	02	Yes	55	No	BS
2015	2.00	34.30	0.00	02	Yes	50	No	BS
2016	2.00	35.43	0.00	02	Yes	50	No	BS
2017	2.00	30.40	0.00	02	Yes	50	No	BS



Note: The System Cost is the total of the Trust Contribution and the Administrative Fee.

Your Retirement Security Plan's salary type is "base salary." As a result, your contribution cost (system cost plus employee contribution rate shown above) is applied as a percentage of each participant's annualized base rate of pay in effect on November 15, 2016, which is that participant's effective salary for the 2017 plan year. Beginning with your January 2017 monthly statement, the estimated amount due will be based on this percentage. Rates shown are for the plan in effect as of January 1 for each year.



SOUTHEAST ALASKA POWER AGENCY

RSP PREPAY OPTION MEMO

SAVINGS CALCULATION TABLE						
Annual increases in aggregate annual salary					2.00%	
Co-op cost of capital (used for present value below)					0.06%	
Billing Rates						
No prepay					36.49%	<-- 2017 rate
After Prepayment					27.42%	<-- 2017 rate
Contributions Savings						
Year	Est. Payroll	Before Prepay	After Prepay	Savings	Present Value of contribution savings 12/31/2016	Present Value of contribution savings 12/31/2016 assuming 3% increases in rates for 2018-2019
2016	834,019					
2017	850,699	310,420	233,262	77,158	77,158	77,158
2018	867,713	316,629	237,927	78,702	78,654	81,014
2019	885,068	322,961	242,686	80,276	80,179	85,062
2020	902,769	329,420	247,539	81,881	81,734	86,712
2021	920,824	336,009	252,490	83,519	83,319	88,393
2022	939,241	342,729	257,540	85,189	84,934	90,107
2023	958,026	349,584	262,691	86,893	86,581	91,854
2024	977,186	356,575	267,944	88,631	88,259	93,634
2025	996,730	363,707	273,303	90,403	89,971	95,450
2026	1,016,665	370,981	278,769	92,211	91,715	97,300
2027	1,036,998	378,400	284,345	94,056	93,493	99,187
Present Value of Lower Contributions					935,998	985,871
Prepay Contribution 12/31/2016 *					448,687	448,687
Estimated Savings					487,311	537,184
* Reflects offset for retro reduction in 2016 rates to 27.42						



SOUTHEAST ALASKA POWER AGENCY

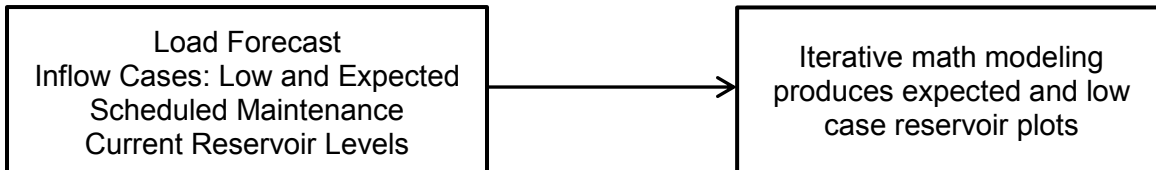
Date: December 6, 2016 From: Eric Wolfe, Director of Special Projects
To: Trey Acteson, Chief Executive Officer Subject: **SEAPA 2017 Operations Plan Report**

SUGGESTED MOTION

I move to approve the 2017 SEAPA Operations Plan as defined in the “2017 Ops Plan Summary” on page 6 of the “SEAPA 2017 Operations Plan Report” dated December 6, 2016.

Every year we present the SEAPA Operations Plan (Ops Plan) for Board approval; not only is an annual review good policy, but it's also a requirement of our Power Sales Agreement (PSA). Our Ops Plan is a three part process based on time horizon; short term, mid-term, and long term. Traditionally the Board approves the annual or long term plan. The annual plan forecasts expected reservoir levels for Tyee Lake and Swan Lake for the upcoming year, apportioned according to the PSA with respect to upcoming loads, inflows, and major scheduled maintenance or construction activities. Typically we present the Ops Plan to the Board in December or January because the annual reservoir fill cycle is normally complete by end of November (low winter inflows and high winter loads mean lowering the reservoirs (drafting) is about to occur. SEAPA staff writes a proposed motion for the board to approve Swan Lake and Tyee Lake maximum draft levels that will be the basis for the next year's long term plan.

This year will be different from last year in that two, extended, 1 unit outages are scheduled for Swan Lake for excitation refurbishment; also we have a larger more robust resource at Swan Lake following the completion of the reservoir increase project. We also have a new load forecast for over-all energy demand by the municipalities. These three aspects combined with a low and expected inflow forecast make up the inputs for the modeling effort.



PSA Fundamentals:

- Full Requirements - The dispatch order is that Purchasing Utilities in meeting their total demand are to take SEAPA energy and capacity after drawing on their existing hydroelectric output (SEAPA comes immediately after existing hydro)
- The capacity and energy of Tyee Lake is dedicated in the first instance to the interconnected¹ utilities of Wrangell & Petersburg, additional Tyee resources after the

¹ Language of the PSA identified WRG & PSG as interconnected as the PSA was written before the STI but in recognition that the STI would interconnect all three municipalities

dedicated needs of WRG & PSG are met go in the first instance to Ketchikan (KTN) as additional dedicated, in a similar fashion the capacity and energy of Swan is apportioned with dedicated status to KTN

- If capacity and energy is available after dedicated and additional dedicated demands are met, this capacity and energy can be sold by the agency either on a short term basis (hourly, next day) or as an interruptible delivery (this may come into our Ops Plan this year)

Here's how we digest the above paraphrased legalese into a nuts & bolts fill and draft schedule for each reservoir. We stretch the storage at Swan Lake for as long as possible by maximizing Tyee output during the winter and usually in the summer, we do this with an eye into the future so drafting Tyee storage in the winter doesn't jeopardize future WRG & PSG deliveries. This doesn't mean that if we over-daft Tyee for prudent reasons in accordance with the Ops Plan, we won't fill future WRG & PSG deliveries from Swan Lake until Tyee recovers. We recently did just that this past November by utilizing the new storage at Swan Lake. The over-all annual balance of additional dedicated deliveries will always be to KTN as the resources at Tyee exceed the load requirements of WRG & PSG.

Expected case SEAPA Deliveries

Deliveries forecast for 2017 were developed as an expected case. The maximum deliveries from the last 5 years was increased 5% to reflect the upward volatility of winter loads with cold temperatures, this was done for the months December through February; monthly energy for the period March through November used .5% increase of the maximum of the last two years of record, both estimates are consistent with our recent load forecast. Table 1 below lists the expected load case load based on our last 5 years of deliveries. As a conservative measure with respect to water planning, we tend to use loads slightly higher than the recent past; our expected case of 180,730 MWh would be approximately 4% higher than our record delivery year of 2013. Deliveries are escalated 6%² to cover transmission losses with a resulting annual generation requirement of 191,574 MWh.

PSG+WRG+KTN-CALENDAR YEAR- KWh Report- Kay Key								Expected	Required
Deliveries in MWh				Deliveries in MWh				Delivery	Generation
	2010	2011	2012	2013	2014	2015	2016	MWh	MWh
JAN	16,739	19,071	19,221	15,377	16,106	15,010	18,457	20,182	21,393
FEB	13,979	16,100	16,372	14,764	19,209	13,990	13,672	20,169	21,379
MAR	16,070	17,376	17,764	15,051	17,800	15,699	13,321	15,777	16,724
APR	12,796	12,144	13,935	13,691	14,305	12,813	10,289	12,877	13,650
MAY	9,447	10,011	10,371	9,752	8,690	7,912	10,002	10,052	10,655
JUN	9,489	9,337	8,777	8,901	10,963	10,264	10,005	10,316	10,935
JUL	12,156	13,643	11,853	14,938	13,052	14,798	12,892	14,872	15,765
AUG	14,079	14,578	11,332	17,030	13,602	13,496	13,124	13,564	14,378
SEP	10,921	9,965	9,799	13,591	11,324	11,025	11,667	11,725	12,429
OCT	10,668	11,832	15,132	13,460	10,800	10,898	14,659	14,733	15,617
NOV	14,071	16,643	18,883	18,219	14,284	15,647	12,353	15,725	16,668
DEC	17,816	17,607	19,751	19,446	17,898	18,945	0	20,738	21,983
	158,232	168,306	173,192	174,221	168,033	160,498	140,440	180,730	191,574

Figure 1- Historic deliveries, estimated 2017 deliveries, and resulting SEAPA generation requirements.

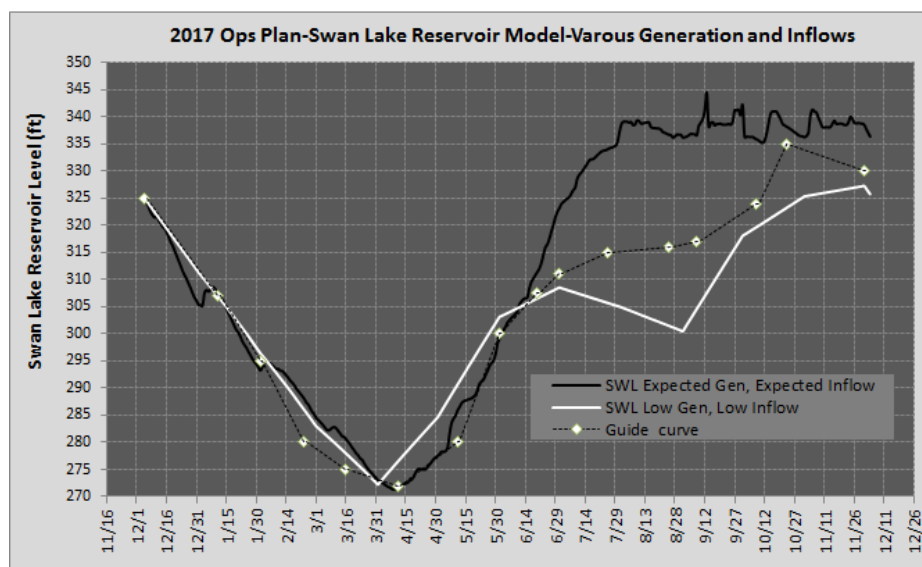
² Measured annually as difference between STC generation and deliveries as documented by accounting

SWL Generation and Water Levels

Two cases of Swan Lake generation were developed, an expected case near the historic average using a water year based on 2012 (7% above normal, and there was spill), and a hypothetical water year 20% below the estimated CAI average.³ During the winter months it will not be apparent that a low water year is looming during the upcoming autumn, thus for both cases generation and draft rates are nearly the same (December-through March); the only indication that a low inflow year could occur is snow pack, but at Swan Lake this can represent only 15% to 20% of inflows. In April and May of the drier case, the only course available to raise water levels near the guide curve is to shut the power plant down and this was done in the model. During July and August the dry case again drafts Swan water levels, and again the only course of action to get near the guide curve is to shut the plant off during the low load period of September. This may or may not result in diesel generation depending on the storage available at Tyee (wait for it). Now note the difference in the white and black line of Figure 2. A water year 7% above normal fully restores the reservoir to the new full pool level of 345 and provides the expected case generation of 74,520 MWh, while 20% below average results in very low generation but the reservoir level did return to 325 ft. Thus use of the guide curve did not “rob” water from next year meaning we returned to our starting point of 325 ft.. The range between these inflows represents the majority of our inflow records, wetter years have occurred and this would result in greater spill. Our intent is to use the guide curve such that we offer KPU the option to augment generation with diesel engines if and only if we have strong indication SEAPA would have to limit additional dedicated deliveries from Tyee. We plan to use the guide curve methodology at Swan Lake to wait as long as possible into the wet season before applying diesel generation to replace storage. SEAPA and the municipalities may choose to draft below the Swan Lake guide curve as in this example to serve fish processing loads, and then when September rain didn’t occur, limit generation at Swan Lake to start filling toward the guide curve.

	SWL Expected Generation using Expected Inflow	SWL Low Case Generation using Low Inflow
	MWh	MWh
Jan	9,360	9,360
Feb	6,384	6,384
Mar	5,760	5,184
Apr	4,128	0
May	3,072	480
Jun	3,792	3,792
Jul	5,952	5,304
Aug	6,432	5,184
Sep	6,072	480
Oct	5,736	3,720
Nov	6,864	4,560
Dec	10,968	10,968
total	74,520	55,416

Figure 2- SWL Model load Input and resulting water levels



³ Commonwealth Associates Inc. developed an inflow average based on rain gauges and river gage data of the area, this study, as part of the STI planning effort estimated an average inflow of 284,514 ac-ft (393 cfs). The average annual inflow of the USGS Falls creek gauge is 444 cfs. So the CAI Average is probably below “normal” or average.

Prior to SEAPA management of Swan Lake reservoir, the lake was not drafted below elevation 280 ft. This practice led to greater amounts of spill later in the year and had more practical application prior to the STI. Failure to use this storage through the life of the project may result in loss of this active storage during relicensing. The guide curve of Figure 2 is shown slightly below elevation 275 ft.⁴, the lowest value of last year's Ops Plan, but we suggest using the range of the reservoir down to elevation 273 ft. to reduce spill and reduce diesel generation. For water above the guide curve and above the past spillway crest of 330 ft, SEAPA plans to use this new storage capability in the following manner:

- Elevations 330 ft. to 339 ft. - this water will be stored for later use but if water levels exceed 330 ft, both generating units must be fully available and the vertical gate must be operable. Additionally, prior to storage above 335 ft our log retention and removal process must be implemented.
- Elevations 339 ft. to 342 ft. - both units will operate to their highest levels that loads permit to draft the reservoir back down to 339 ft. or below, this will most likely occur in spring and fall and assist with refilling Tyee Lake as increasing Swan Generation will reduce Tyee Generation for a given SEAPA delivery schedule.
- For the first few years water above elevation 342 ft. will be immediately spilled by automatic operation. It takes time to learn new things and operate new large spillway equipment. Opening the gate a little before the FERC maximum pool level of 345 gives everyone time to assess the inflow situation relative to weather forecasts and allows operators more time should there be an equipment malfunction. Flashboards automatically release at elevation 347 ft.

Tyee Generation and Water Levels

Tyee generation was estimated as the net of estimated deliveries less Swan generation. Thus we have two generation cases to track for Tyee, the expected case which is expected deliveries less expected Swan generation, and a high case which is expected deliveries less the Swan low case generation (for a given delivery schedule the lower the Swan generation the greater the Tyee portion). The two modeled Tyee generation schedules are shown in Figure 3; monthly energy was converted to average power level and entered into the math model. For each Tyee load case a low case inflow and an expected or assumed average case inflow was used; this resulted in four water level plots which all used a starting water level elevation of 1370 ft (actual was 1,378 on 12-5-2016 so conservative). Resulting water levels for each case are shown

Required Generation	SWL-Expected Gen & Inflow	Tyl Expected (balance)	SWL Low case Generation	Tye High case Generation
MWh	MWh	MWh	MWh	MWh
21,393	9,360	12,033	9,360	12,033
21,379	6,384	14,995	6,384	9,187
16,724	5,760	10,964	5,184	12,289
13,650	4,128	9,522	0	15,239
10,655	3,072	7,583	480	10,175
10,935	3,792	7,143	3,792	7,143
15,765	5,952	9,813	5,304	10,461
14,378	6,432	7,946	5,184	9,194
12,429	6,072	6,357	480	11,949
15,617	5,736	9,881	3,720	11,897
16,668	6,864	9,804	4,560	12,108
21,983	10,968	11,015	10,968	11,015
191,574	74,520	117,054	55,416	132,688

Figure 3- Expected deliveries and modeled Tyee generation (rows are January to December)

⁴ The FERC operating minimum is 271.5 ft.; we propose 273 as an absolute minimum for 2017.

in Figure 4. For the case with generation of 117,054 MWh and below average inflows, Tyee water levels remain at sustainable levels, meaning no additional storage that would have been used in the winter of 2018 is used to support 2017 operations, this is evident as the reservoir ending level is slightly above the starting level of 1370 ft (solid black plot). For high case generation and low Tyee inflows which are 12% below the IECO average⁵, storage is stressed in September when the SWL plant was shut down to refill the reservoir. In this case (solid white plot) with water levels well below the guide curve and trending down during early September, additional dedicated exports from Tyee would be curtailed. Note the sharp increase in Tyee water level during October (typical) of all the plots; this is due a large inflow event of even a low case year. Guide curves at Tyee are the water elevations when SEAPA considers the issue of curtailments of Tyee additional dedicated deliveries. Please note the dotted white line of Figure 4. This line represents water levels for a Tyee generation schedule that only serves Wrangell and Petersburg. The loads in this case are estimated at 50% of the estimated total or 90,365

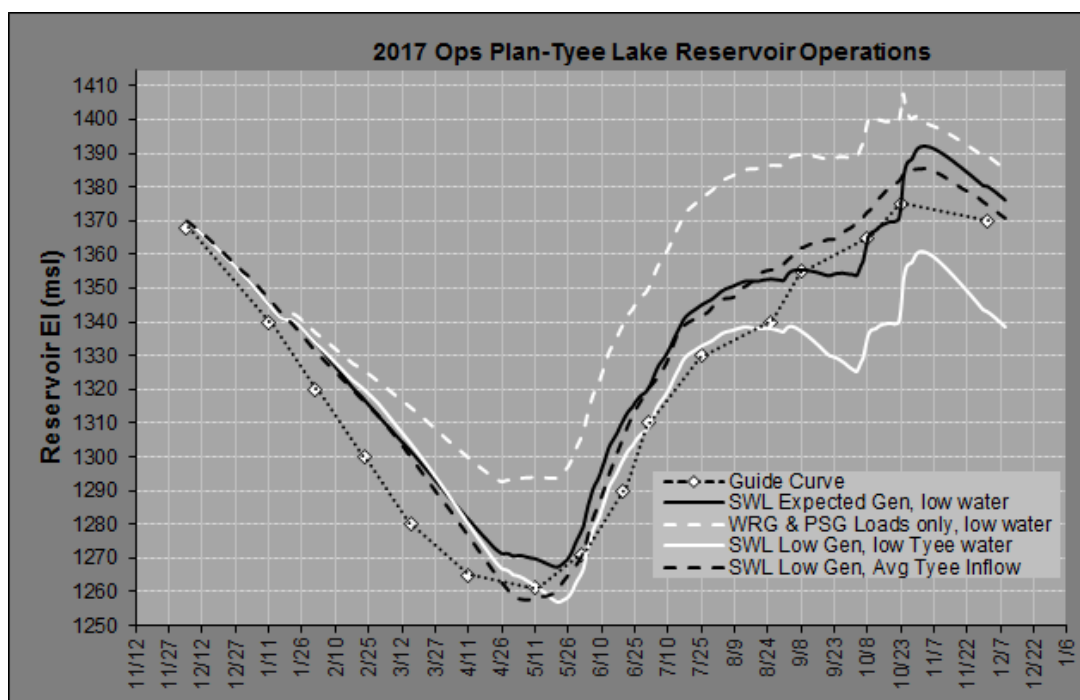


Figure 4- Water levels for 4 cases of Tyee modeling. All low water references refer to low inflows at Tyee modeled from 1965 gage data that is approximately 10% below what is thought to be average, we have no lower inflow record.

MWh; the historic maximum import level of the two northern communities is 83,300 MWh. Even for the September low point of the solid white plot, WRG & PSG loads can be served into the future without jeopardizing future northern community deliveries. This doesn't mean always putting off storage renewal is a good idea; lower over-all operating head over the long term means lower output for a given flow rate and thus is detrimental to Ketchikan in the long term. For the white plot, additional dedicated deliveries would be curtailed or cut in September; but the exercise demonstrates pulling the cut trigger too soon (black trace in September) may be over-zealous protection of Tyee storage. Continued trending away from a guide curve is bad

⁵ IECO average is a convoluted subject, true to Alaska standards 3 different studies were conducted to determine expected "firm" Tyee Output. The IECO design document lists water to support 130,000 MWh, Raytheon shaved this to 127,500 MWh (+/-), and a follow-up study was performed. SEAPA has used 125,000 MWh as a conservative measure, only time will tell.

news, a temporary deviation below the guide curve warrants thought and investigation, but may not indicate immediate curtailment of Tyee additional dedicated resources.

2017 Ops Plan Summary

For the reasons demonstrated above, SEAPA staff proposes guide curve elevations be used by the scheduling group as warnings, and after consultation and mutual agreement between SEAPA and the dedicated resource holder, curtailments can then be issued. Guide curve elevations for Swan Lake and Tyee Lake are listed in Figure 5 and correspond with the above plots

As a reference, past Ops Plan maximum draft limits (minimum elevations) are listed below.

Operations Plan Maximum Draft Limits				Projected
	2014	2015	2016	2017
Swan Lake	275	285	275	273
Tyee Lake	1,265	1,280	1,270	1,261

2016-2017 date	Tyee GC Elevation (msl) ft.	SWL GC
12/5	1368	325
1/11	1340	307
2/1	1320	295
2/23	1300	280
3/16	1280	275
4/11	1265	273
5/11	1261	280
6/1	1271	300
6/20	1290	307.5
7/1	1310	311
7/25	1330	315
8/25	1340	316
9/8	1355	317
10/8	1365	324
10/23	1375	335
12/1	1370	330

Figure 5- 2017 Ops Plan guide curves



SOUTHEAST ALASKA POWER AGENCY PTO DONATION POLICY MEMO

Date:	December 6, 2016	From:	Trey Acteson
To:	SEAPA Board of Directors	Subject:	PTO Donation Policy

A draft Paid Time Off (PTO) Donation Policy is attached for your review. Implementing this policy will allow SEAPA employees to donate accrued PTO to fellow employees who would otherwise need to take leave without pay due to a catastrophic illness or injury.

IRS requirements related to PTO donation policies include having a written policy in place that creates a leave bank and allowing donations for only medical emergency or a federally-declared major disaster. Policies that follow IRS guidance allow donations to be taxed by only the recipient, instead of both the donor and the recipient.

In addition to providing pay during medical emergencies, this policy would extend employees insurance eligibility, which is limited once "Leave Without Pay" is initiated. Those limits vary between administrative and union plans, and all employees would ultimately be eligible for 18 months of COBRA.

Major components of the draft policy are outlined below. This attached policy has been reviewed by SEAPA counsel and ConnectHR, LLC, a human resources consulting firm hired to assist us in developing employee policies.

- Eligible employees are regular, full-time employees who have been employed for at least one year and are not eligible for disability benefits. All accrued leave must be exhausted before accepting donated PTO, and the employee must be on an approved Leave of Absence. This policy covers medical emergencies only. Receipt of donated hours is limited to 480 hours per calendar year.
- Donated hours will be converted to a dollar value (hours x donor's rate of pay) and deposited to a PTO Donation Fund. Donations may be made for a specific employee or directly to the fund. The maximum donation is the lesser of 40 hours per calendar year or 50% of the donor's PTO balance, less already-approved future time off.
- Both donations and applications to receive PTO donations must be approved by the CEO.
- Donations remain in the PTO Donation Fund until allocated to the recipient as needed, and unused donations may be refunded to donors after one year.

SUGGESTED MOTION

I move that SEAPA adopt the Paid Time Off (PTO) Donation Policy as presented in the December 14, 2016 Board Packet.



SOUTHEAST ALASKA POWER AGENCY

Paid Time Off (PTO) Donation Policy

SEAPA's PTO Donation Policy allows employees to donate accrued PTO to be used by fellow employees who would otherwise need to take leave without pay because of a catastrophic illness or injury.

PTO Recipients

1. Regular, full-time employees who have worked for SEAPA for at least one full year and who do not qualify to receive short- or long-term disability benefits are eligible to receive donated PTO.
2. Eligible employees must be on an approved Leave of Absence due to a catastrophic illness or injury to the employee, their spouse or domestic partner, a parent or their dependent that will require the employee to be absent from work for a period of at least 40 hours.
3. Employees may apply for PTO donations by completing a PTO Donation Application. All requests must be approved by the CEO.
4. Employees requesting donated leave time must exhaust all accrued leave before using donated PTO.
5. Administration may request documentation to substantiate the employee's eligibility for this benefit.
6. Administration will distribute a Request for Donations after an employee's application has been approved. The employee's name will not be revealed unless they approve, even though coworkers may discover the identity of the employee based on timing of an employee's absence.
7. The recipient will receive paid leave at his or her normal rate of pay, as needed, during regular pay periods. Donated PTO is considered wages and is subject to appropriate tax withholding when paid to the recipient.
8. The maximum number of donated hours an employee may use is 480 hours per calendar year.
9. Donated PTO must be used within twelve months from the approval date. The time off must be used for the purpose approved in the application. Donated PTO is not eligible to be cashed out.



SOUTHEAST ALASKA POWER AGENCY

Paid Time Off (PTO) Donation Policy

PTO Donations

1. All PTO donations are completely voluntary and will remain anonymous. Employees may donate PTO hours by completing a PTO Donation Form.
2. PTO hours will be deducted from the donor's accrued PTO, converted to a dollar value (hours x donor hourly wage) and deposited to the PTO Donation Fund.
3. PTO donations may be made in four-hour increments. The minimum donation is four hours.
4. The maximum donation is the lesser of 40 hours per calendar year or 50% of the donor's current PTO balance, less already-approved future time off. Donating employees must reserve a personal PTO balance of 40 hours for personal needs and may not borrow against future PTO.
5. Donations to the PTO Donation Fund may be donated to a specific employee or for use by any employee in need.
6. When donations are dedicated to a specific employee and total donations exceed the employee's need after one year from the date of their approved request, PTO donations will be returned to donors on a prorated basis. If a donor terminates, donated hours will be retained in the PTO Donation Fund.
7. PTO Donations must be approved by the CEO.
8. Donor employees may not claim an expense, tax deduction or charitable contribution for any PTO donated under this plan.



SOUTHEAST ALASKA POWER AGENCY

Date: December 6, 2016

To: SEAPA Board of Directors

From: Joel Paisner
Ascent Law Partners, LLP

Subject: Resolution No. 2016-065 Re: Policy for Annual Review of Agency Chief Executive Officer

SUGGESTED MOTION
I move to adopt Resolution No. 2016-065, Policy 7.3 – Annual Review of the CEO, establishing the Annual Review of the Agency CEO prior to the end of each calendar year.

PROPOSED POLICY:

RE: Section 7.3 Annual Review of CEO

The CEO of the Agency reports directly to the Board. The role of CEO is key to the successful operation of the Agency, the Projects, and establishing a positive work environment for Agency staff. In order to provide full oversight, it is a policy of the Board to conduct an annual review of its CEO. The Agency's fiscal year begins in July, and each Board Member serves an annual term with an appointment by member utilities effective in January of each year. The Board believes it is best to conduct an annual review of its CEO prior to the end of the annual year of each board member's term. By doing so, the Agency will be better served, and able to accomplish both annual and long term goals.

Attached for your consideration is Resolution 2016-065.



SOUTHEAST ALASKA POWER AGENCY

RESOLUTION NO. 2016-065**

**The Southeast Alaska Power Agency
Resolution Adopting Policy for Annual Review of Agency Chief Executive Officer**

WHEREAS, the CEO of the Agency reports directly to the Board of Directors.

WHEREAS, the role of the CEO is key to the successful operation of the Agency, the Projects, and establishing a positive work environment for Agency staff.

WHEREAS, it is a policy of the Board to conduct an annual review of its CEO.

WHEREAS, the Agency's fiscal year begins in July, and each Board Member serves an annual term with appointment by member utilities effective in January of each year.

WHEREAS, the Board desires, in the effort of maintaining continuity, to adopt a Policy to conduct the Annual Review of Agency Chief Executive Officer at the end of the calendar year.

NOW THEREFORE, BE IT RESOLVED that the Board of Directors formally adopts Policy 7.3 - Annual Review of CEO, for Annual Review of Agency Chief Executive Office to be conducted prior to the end of each calendar year.

This Resolution No. 2016-065 was duly PASSED and ADOPTED by SEAPA's Board of Directors on the 14th day of December 2016 in Ketchikan, Alaska.

SOUTHEAST ALASKA POWER AGENCY

By _____
Chairman of the Board

ATTEST:

Secretary/Treasurer

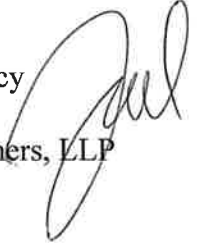
**MEMORANDUM
ATTORNEY-CLIENT COMMUNICATIONS**

TO: John Jensen, Chair
Southeast Alaska Power Agency

FROM: Joel Paisner, Ascent Law Partners, LLP

DATE: December 8, 2016

RE: Suggested Motion for Executive Session Re: Discussions on SEAPA
Employment Related Matters



To the extent that the Board of Directors seeks to conduct further discussions on SEAPA Employment Related Matters, I recommend the following motion be made:

I move to recess into Executive Session to conduct further discussions on SEAPA Employment Related Matters. The Executive Session will be conducted pursuant to SEAPA's Bylaws which are consistent with Alaska Statute 44.62.310 as the discussions may include subjects that tend to prejudice the reputation and character of any person, and no one has requested this matter be addressed in a public session.



SOUTHEAST ALASKA POWER AGENCY

Date: December 6, 2016
To: SEAPA Board of Directors
From: Trey Acteson, Chief Executive Officer
Subject: Consideration and Approval of Agency CEO Employment Contract

SUGGESTED MOTION
I move to approve Agency Chief Executive Officer's employment contract consistent with the terms and conditions established during Executive Session.



SOUTHEAST ALASKA POWER AGENCY FY16 REBATE MEMO

Date: **December 5, 2016** From: **Trey Acteson**
To: **SEAPA Board of Directors** Subject: **FY2016 Rebate**

The SEAPA Board approved a rebate in the amount of \$800,000 at the June 9 meeting. The rebate was recorded as a reduction to FY2016 hydro power revenues. Payment of the rebate was conditional upon the successful completion of the FY16 audit and contingent upon satisfying bond covenant requirements including debt service ratio compliance.

I am pleased to report that the FY16 audit by BDO USA, LLC is complete and will be presented for your consideration and approval at this meeting. We are compliant with the debt service ratio requirements of the bond indenture, and therefore are in a position to approve distribution of the rebate at this meeting.

As in the past, the rebate share for each utility is based upon the last three years' average of firm kWh purchases from SEAPA. This includes the years FY2014 – FY2016 and is summarized in the table below:

kWh Purchases	Ketchikan	Petersburg	Wrangell	Total
FY2014	100,494,000	44,570,360	38,692,500	183,756,860
FY2015	78,484,000	39,911,120	38,254,270	156,649,390
FY2016	83,316,376	40,762,959	36,474,130	160,553,465
Total kWh	262,294,376	125,244,439	113,420,900	500,959,715
Percentage	52.3584%	25.0009%	22.6407%	100%
Rebate Allocation	\$418,867.20	\$200,007.20	\$181,125.60	\$800,000.00

This rebate represents a nearly half-cent reduction in the Wholesale Power Rate based on an average of the last three years' firm kWh sales. The rate of 6.8 cents/kWh has remained the same for the last 19 years. The Board's approval is being requested to formally award the rebate amounts as defined above. A suggested motion would be:

SUGGESTED MOTION
I move to authorize the distributions of an \$800,000 rebate with a pro rata share to each Member Utility based on an average of the last three years' firm kWh purchases from SEAPA as specified in the FY16 Rebate Memo dated December 5, 2016.