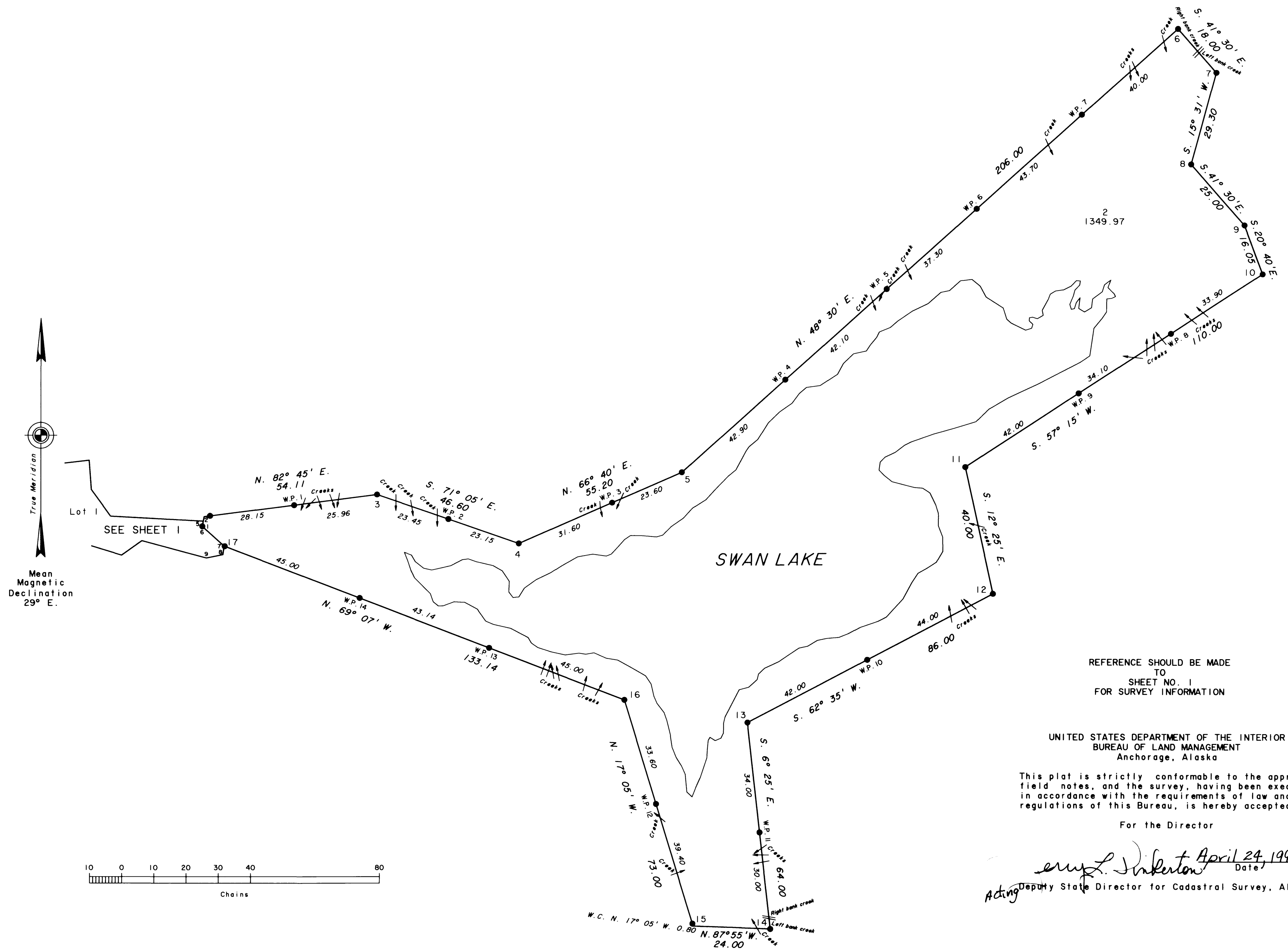


U.S. SURVEY
No. 11630, ALASKA



REFERENCE SHOULD BE MADE
TO
SHEET NO. 1
FOR SURVEY INFORMATION

UNITED STATES DEPARTMENT OF THE INTERIOR
BUREAU OF LAND MANAGEMENT
Anchorage, Alaska

This plat is strictly conformable to the approved
field notes, and the survey, having been executed
in accordance with the requirements of law and the
regulations of this Bureau, is hereby accepted.

For the Director

Ernest J. Siefert April 24, 1997
Acting Deputy State Director for Cadastral Survey, Alaska

Print Sheet CR 16-3
KETCHIKAN C-5
T725, R92E, CRM